



Comfort. Under control.

02-06-23 SWEETGREEN #AUS285 - AUSTIN, TX (MUELLER) CX, TAB, IAQ

CheckList Information

Name : 5 - VRF BRANCH CONTROLLER **Status :** Submitted
Assigned Organization : National TAB **Asset :**
Requesting Organization : National TAB

CheckList Item Details

VRF BRANCH CONTROLLER HAS BEEN INSTALLED ACCORDING TO REQUIRED INSTALLATION DETAILS

Insert three photo's showing unit as installed in the ceiling plenum.



VRF-1.jpeg



VRF-2.jpeg



VRF-3.jpeg

Unit MFG and Model match the Scheduled value: Yes
Trane: TCMBM108JA114N4



VRF_MODEL.jpeg

Branch circuits installed with field supplied external shut-off/maintenance valves

Yes



SHUT_OFF.jpeg

Support hangers installed with spring isolators

No



ISOLATORS_MISSING.jpeg

Unit power supplied is within 10% of scheduled power: 208v / 1p

Yes

Circuit power MOCB breaker size, 15 amp has been installed

Yes



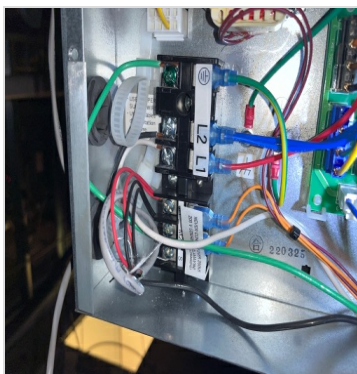
VRF_BREAKER.jpeg

Record the RLV and RLA of the VRF Branch Controller

209 V 0.40 A

Control wiring is run utilizing 24vac Shielded twisted pair, isolated from high power lines.

CONTROL WIRING IS RUN WITH 2 TWISTED PAIRS. HIGH VOLTAGE WIRES ARE TOUCHING LOW VOLTAGE WIRES.



WIRING.jpeg

VFR Branch Controller has 8 Ports

Yes



PORTS.jpeg

Line sets are fully insulated

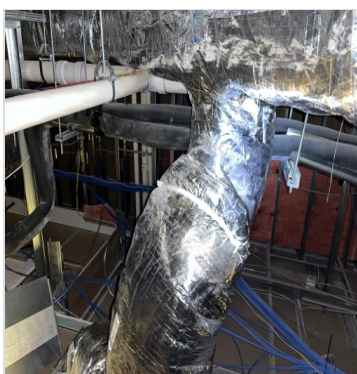
Yes



INSULATION.jpeg

Line sets are properly supported (detail support system)

LINE SETS SUPPORTED WITH UNI STRUT. SUPPORT INTERVALS 42".



LINE_SUPPORTS.jpeg

Notes/Comments :

