

### MEP ABBREVIATIONS

ABV.	ABOVE
AC	ALTERNATING CURRENT
AVC	AIR CONDITIONER
AFG	ABOVE FINISHED CEILING
AFF	ABOVE FINISHED FLOOR
AG	ABOVE FINISHED GRADE
AG	ABOVE GRADE AND GFI
AHAP	AS HIGH AS POSSIBLE
AHU	AIR HANDLING UNIT
ALT.	ALTERNATE
AMB.	AMBIENT TEMPERATURE (F. DEGREE)
AMP.	AMPERE
APPROX.	APPROXIMATELY
ARCH.	ARCHITECTURAL
AVG.	AVERAGE
B	BOILER
B.G.	BELOW GRADE
BMS	BUILDING MANAGEMENT SYSTEM
BRD	BAROMETRIC RELIEF DAMPER
BTU	BRITISH THERMAL UNIT
CD	CONSTRUCTION DOCUMENTS
CFH	CUBIC FEET PER HOUR
CFM	CUBIC FEET PER MINUTE
CH.	CHILLER
CHEM.	CHEMICAL
CHP	CHILLED WATER PUMP
CKT.	CIRCUIT
CLG.	CEILING
CMPR	COMPRESSOR
CT	COOLING TOWER
CWP	CONDENSER WATER PUMP
CU	CONDENSING UNIT
DB	DRY BULB
DEFL.	DEFLECTION
DEG. F.	DEGREES FAHRENHEIT
DET.	DETAIL
DD	DESIGN DEVELOPMENT
DIA	DIAMETER
DISC.	DISCONNECT SWITCH
DIM.	DIMENSION
EA	EXHAUST AIR
EDB	ENTERING DRY BULB
EF	EXHAUST FAN
ELEC.	ELECTRICAL
ELEV.	ELEVATION
EMCS	ENERGY MGMT. CONTROL SYSTEM
E.S.P.	EXTERNAL STATIC PRESS. (IN. W.G.)
EWB	ENTERING WET BULB
EWT	ENTERING WATER TEMPERATURE
EXH.	EXHAUST
EXIST.	EXISTING
F/A	FIRE AREA OPENING (SQ. FT.)
FCU	FAN COIL UNIT
FHP	FRACTIONAL HORSE POWER
FLR.	FLOOR
FPI	COIL FINS PER INCH
FT	FEET PER MINUTE
FPS	FEET PER SECOND
FT.	FOOT OR FEET
GFI	GROUND FAULT INTERRUPTER
GPM	GALLONS PER MINUTE
HD	HEAD
HOA	HANDS/OFF/AUTO. MOTOR STARTER
HP	HORSE POWER
HPU	HEAT PUMP UNIT
HR.	HOUR(S)
HT.	HEIGHT
HTG.	HEATING
HTR.	HEATER
HVAC	HEAT VENT AND AIR CONDITIONING
HWP	HOT WATER PUMP
HX	HEAT EXCHANGER
HZ	FREQUENCY (HERTZ)
ID	INSIDE DIAMETER OR DIMENSION
IN.	INCHES
KW	KILOWATT
KWH	KILOWATT HOUR
LAT	LEAVING AIR TEMPERATURE
LWT	LEAVING WATER TEMPERATURE
MAX.	MAXIMUM
MCA	MINIMUM CURRENT AMPS.
MOCP	MAX. OVER CURRENT PROTECTION
MHR	1000 BTU PER HOUR
MECH.	MECHANICAL
MFR.	MANUFACTURER
MIN.	MINIMUM
MVD	MANUAL VOLUME DAMPER
NA	NOT APPLICABLE
NC	NOISE CRITERIA
NIC	NOT IN CONSTRUCTION
NK	NECK DIMENSION
NO.	NUMBER
OA	OUTSIDE AIR
OAR	OWNERS AUTHORIZED REPRESENTATIVE
OBD	OPPOSED BLADE DAMPER
OD	OUTSIDE DIAMETER
OFICI	OWNER FURNISHED CONTRACTOR INSTALLED
ORIG.	ORIGINAL
P.D.	PRESSURE DROP (FT)
PH.	PHASE
PMB	POWERED MIXING BOX
PLBG.	PLUMBING
PNL.	PANEL
PRESS.	PRESSURE
RA	RETURN AIR
RAG	RETURN AIR GRILLE
RD.	RADIUS
RE.	REFERENCE
RFM	REVOLUTIONS PER MINUTE
RTU	ROOF TOP UNIT
S/S	SINGLE SPEED MOTOR
S/S/S	START/STOP/STATUS
SA	SUPPLY AIR
SAG	SUPPLY AIR GRILLE
SDC	STAND ALONE DIGITAL CONTROLLER
SEER	SEASON ENERGY EFFICIENCY RATIO
SENS.	SENSIBLE
SP	STATIC PRESSURE
SQ.	SQUARE
STR.	MOTOR STARTER
TEMP.	TEMPERATURE
T.S.P.	TOTAL STATIC PRESSURE (IN. W.G.)
UH	UNIT HEATER
UNO	UNLESS NOTED OTHERWISE
V	VOLT
VAV	VARIABLE AIR VALVE
VEL.	VELOCITY
W	WATT
W	WITH
W/O	WITHOUT
W.G.	WATER GAUGE
WB	WET BULB
WP.	WEATHERPROOF
WPD	WATER PRESSURE DROP
WPP	WEATHERPROOF GFI
XFMR	TRANSFORMER

### DUCTWORK LEGEND

16X12	SHEET METAL DUCT	16"x12"
→	DIRECTION OF FLOW	
=====	INTERNALLY INSULATED SHEET METAL DUCT	16"x12"
-----	HIDDEN SHEET METAL DUCT	16"x12"
↷	ROUND ELBOW DOWN (R/A SIMILAR)	
↶	ROUND ELBOW UP (R/A SIMILAR)	
↷	RADIUS ELBOW (R=1.5 MIN.)	
↷	45 DEGREE ELBOW (R=1.5 MIN.)	
↷	SIZE OR SHAPE TRANSITION	
↷	TURNING VANES (RECTANGULAR), SMOOTH RADIUS	
	FLEXIBLE DUCT CONN. WITH DAMPER	
↷	BRANCH TAKE-OFF	
↷	WYE JUNCTION	
↷	SUPPLY DUCT SECTION UP	
↷	SUPPLY DUCT SECTION DOWN	
↷	RETURN DUCT SECTION UP	
↷	RETURN DUCT SECTION DOWN	
↷	EXHAUST DUCT SECTION UP	
↷	90 DEGREE S/A ELBOW DOWN	
↷	90 DEGREE S/A ELBOW UP	
↷	90 DEGREE R/A ELBOW DOWN	
↷	90 DEGREE R/A ELBOW UP	
↷	RADIUS ELBOW (R=1.5 MIN.)	
↷	SQUARE ELBOW WITH DOUBLE WALL TURNING VANES	
↷	BRANCH TAKE-OFF WITH VANED EXTRACTOR	
↷	SPIN-IN TAP WITH DAMPER	
↷	TEE WITH SQUARE ELBOWS, TURNING VANES & SPLITTER DAMPER	
↷	SIDEWALL SUPPLY GRILLE OR REGISTER WITH AIR EXTRACTOR	
↷	S/A GRILLE/REGISTER W/ ROUND NECK & FLEX CONNECTION. 4-WAY THROW (U.N.O.)	
↷	S/A GRILLE/REGISTER W/ SQUARE NECK. 4-WAY THROW (U.N.O.)	
↷	R/A GRILLE OR REGISTER	
+	VOLUME DAMPER	
+	COUNTER WEIGHTED BACKDRAFT DAMPER	BD
+	FIRE DAMPER	FD
+	FIRE/SMOKE DAMPER (WITH SM. DET.)	FSD
+	SMOKE DAMPER (WITH SM. DET.)	SD
+	MOTORIZED DAMPER (WITH END SW.)	MD
+	STATIC PRESSURE SENSOR	SP
+	AIRFLOW MEASURE STATION	AF
+	AIRFLOW IONIZER STATION	AI
(T) / (H) / (C)	THERMOSTAT OR TEMP SENSOR/ HUMIDISTAT/CARBON DIOXIDE SENSOR	(T) / (H) / (C)
AD	ACCESS DOOR	AD
+	DUCT MOUNTED SMOKE DETECTOR (TUBE SENSING TYPE)	(P)

ALL SYMBOLS ON THIS LIST ARE NOT NECESSARILY USED ON THIS PROJECT.

### HVAC & PLUMBING, VALVE & FITTINGS SYMBOLS

+	TEE	
+	TEE, UP	
+	TEE, DOWN	
+	SINGLE SWEEP TEE	
+	CROSS	
+	LATERAL	
+	45 DEGREE ELBOW	
+	90 DEGREE ELBOW	
+	90 DEGREE ELBOW UP	
+	90 DEGREE ELBOW DOWN	
+	CAP	
+	SINGLE W.F. LATERAL STUB	
+	DOUBLE W.F. LATERAL STUB	
+	SINGLE W.F. LAT. & TRAP	
+	DOUBLE W.F. LAT & TRAP	
+	FLOOR DRAIN RISER W/ TRAP	
+	FLOOR CLEAN OUT	
+	CLEAN OUT	
+	FLOOR DRAIN	
+	HUB DRAIN	
+	DOWN SPOUT	
+	F.H.C.	FIRE HOSE CABINET
+	V.T.R.	VENT THRU ROOF
+	O.D.	OVERFLOW ROOF DRAIN
+	R.D.	ROOF DRAIN
+	+	GAS PRESSURE REDUCING VALVE
+	+	WATER PRESSURE REDUCING VALVE
+	+	OS & Y VALVE
+	+	GLOBE VALVE
+	+	GATE VALVE
+	+	BALANCING VALVE (WITH PETE'S PLUG EITHER SIDE)
+	+	BUTTERFLY VALVE
+	+	BALL VALVE
+	+	SOLENOID VALVE
+	+	PLUG VALVE
+	+	CHECK VALVE
+	+	PRESSURE RELIEF VALVE
+	+	CONTROL, 2 WAY VALVE
+	+	CONTROL, 3 WAY VALVE
+	+	MOTORIZED ISOLATION VALVE (2-POSITION-24v)
+	+	MOTORIZED CONTROL VALVE (MODULATING-24v)
+	+	FLOOR CONTROL VALVE
+	+	ANGLE GATE VALVE
+	+	ANGLE GLOBE VALVE
+	+	MANUALLY CALIBRATED BALANCING VALVE
+	+	AUTOMATIC FLOW CONTROL VALVE
+	+	STRAINER & BLOW OFF VALVE
+	+	PRESSURE GAUGE & COCK
+	+	UNION OR COMPANION FLANGES
+	+	THERMOMETER
+	+	PRESSURE & TEMPERATURE TAP (PETES PLUG)
+	+	THERMOSTAT
+	+	HUMIDISTAT
+	+	FLOW METER
+	+	ANCHOR (PIPE)
+	+	EXPANSION JOINT
+	+	PIPE GUIDE
+	+	MANUAL AIR VENT
+	+	AUTOMATIC AIR VENT
+	+	HOSE END DRAIN
+	+	HOSE BIBB
+	+	THERMOMETER & WELL
+	+	TEMPERATURE SENSOR
+	+	FLOW SWITCH
+	+	PRESSURE SENSOR
+	+	COMPRESSED AIR TAP
+	+	FLOAT AND THERM. TRAP
+	+	BUCKET STEAM TRAP
+	+	PIPE SIZE REDUCER (CONCENTRIC)
+	+	PIPE SIZE REDUCER (ECCENTRIC)

ALL SYMBOLS ON THIS LIST ARE NOT NECESSARILY USED ON THIS JOB.

### GENERAL HVAC NOTES:

- WITHOUT PRIOR APPROVAL FROM ENGINEER AND OWNER, ALL MECHANICAL EQUIPMENT SHALL NOT BE OPERATED DURING CONSTRUCTION OF THE BUILDING PER MANUFACTURER RECOMMENDATIONS. MECHANICAL CONTRACTOR IS RESPONSIBLE TO PROVIDE TEMPORARY HEATING OR COOLING AS NEEDED TO CLIMATIZE THE BUILDING.
- ALL PIPING AND DUCTS IN FINISHED ROOMS OR SPACES SHALL BE CONCEALED WITHIN FURRED CHASES OR ABOVE SUSPENDED CEILING.
- ALL DUCTWORK SIZES ARE PROVIDED IN CLEAR INSIDE AIRSTREAM DIMENSIONS. INCREASE DUCT SIZES TO ACCOMMODATE ANY INTERNAL INSULATION REQUIREMENTS (AS SPECIFIED). PROVIDE A MINIMUM OF 15 LINEAR FT. OF INTERNAL ACOUSTIC LINER ON SUPPLY AND RETURN AIR DUCTWORK FROM ANY FCU, AHU, AC, OR RTU (UNO). PROVIDE 8LF INTERNAL LINER FOR MIXING OR VAV BOXES.
- PROVIDE FLEXIBLE CONNECTIONS ON AT THE INTAKE AND DISCHARGE OF ALL MOTOR DRIVEN EQUIPMENT.
- PROVIDE VIBRATION ISOLATORS FOR MOTOR-DRIVEN MECHANICAL EQUIPMENT.
- ALL FLEXIBLE DUCTWORK SHALL HAVE A MAXIMUM DEVELOPED LENGTH OF (5) FIVE FT.
- CONTRACTOR SHALL REFER TO THE ARCHITECTURAL REFLECTED CEILING PLANS FOR THE EXACT LOCATION OF ALL CEILING MOUNTED ME/P DEVICES INCLUDING BUT NOT LIMITED TO LIGHTS, DIFFUSERS, GRILLES ETC..
- AIR DEVICE DUCT SIZES SHALL BE THE SAME SIZE AS SHOWN ON THE DRAWINGS UNLESS NOTED OTHERWISE. REFER TO THE SCHEDULES FOR THE CFM RANGES. PROVIDE A TRANSITION FROM THE NECK SIZE TO THE REQUIRED DUCT SIZE SHOWN.
- CONTRACTOR SHALL VERIFY THE EQUIPMENT CLEARANCE REQUIREMENTS WITH THE MANUFACTURER'S RECOMMENDATIONS. EXACT LOCATION OF SELECTED EQUIPMENT SHALL BE COORDINATED WITH THE STRUCTURE TO PROVIDE RECOMMENDED CLEARANCES FOR MAINTENANCE.
- PROVIDE FIRE DAMPERS, FIRE/SMOKE DAMPERS AND FIRE STOP AS REQUIRED BY CODE AUTHORITIES FOR DUCT PENETRATIONS THROUGH FIRE OR SMOKE RATED WALL AND CEILINGS. REFER TO ARCHITECTURAL DRAWINGS FOR WALL TYPES.
- LOCATE ALL MECHANICAL EQUIPMENT FOR UNOBSTRUCTED MAINTENANCE ACCESS FOR ALL UNIT ACCESS PANELS, CONTROLS AND VALVING.
- ALL FLOOR BRANCHES OF PIPE RISERS SHALL BE PROVIDED WITH SHUT OFF VALVES AND DRAIN CONNECTION.
- UNLESS OTHERWISE SHOWN, LOCATE ALL ROOM THERMOSTATS AND SENSORS 4'-0" (CENTERLINE) ABOVE FINISHED FLOOR. NOTIFY THE ARCHITECT/ENGINEER OF ANY ROOMS WHERE THE ABOVE LOCATION CAN NOT BE MAINTAINED OR WHERE THERE IS A QUESTION ON PROPER LOCATION.
- DUCTWORK AND ITS CONSTRUCTION WILL BE GALVANIZED SHEET METAL AND CONSTRUCTED ACCORDING TO THE LATEST SMACNA STANDARDS.
- ALL DUCTWORK IS SHOWN IN SCHEMATIC FORM. DUCT RISES AND DROPS ARE NOT SHOWN. PROVIDE OFFSETS AS REQUIRED TO MEET SPACE REQUIREMENTS AND TO AVOID INTERFERENCE WITH OTHER TRADES. EACH TRADE SHALL BE RESPONSIBLE FOR COORDINATION WITH OTHER TRADES.
- PIPING IS SHOWN IN SCHEMATIC FORM. ROUTE PIPING AS REQUIRED FOR CLEARANCE WITH STRUCTURAL CONDITIONS. COORDINATE WITH OTHER TRADES AS REQUIRED. PIPING SHALL BE INSTALLED WITH ADEQUATE SLOPE AS REQUIRED FOR EACH PARTICULAR SYSTEM.
- DOUBLE NUT LOCK DOWN FOR MULTI-VANE DAMPERS INSTALLED IN HIGH VELOCITY DUCTWORK/SMOKE REMOVAL DUCTWORK.
- ALL RADIUS TURNS SHALL BE SMOOTH WALL WITH A RADIUS OF R = 1.5D.

### GENERAL PROJECT NOTES:

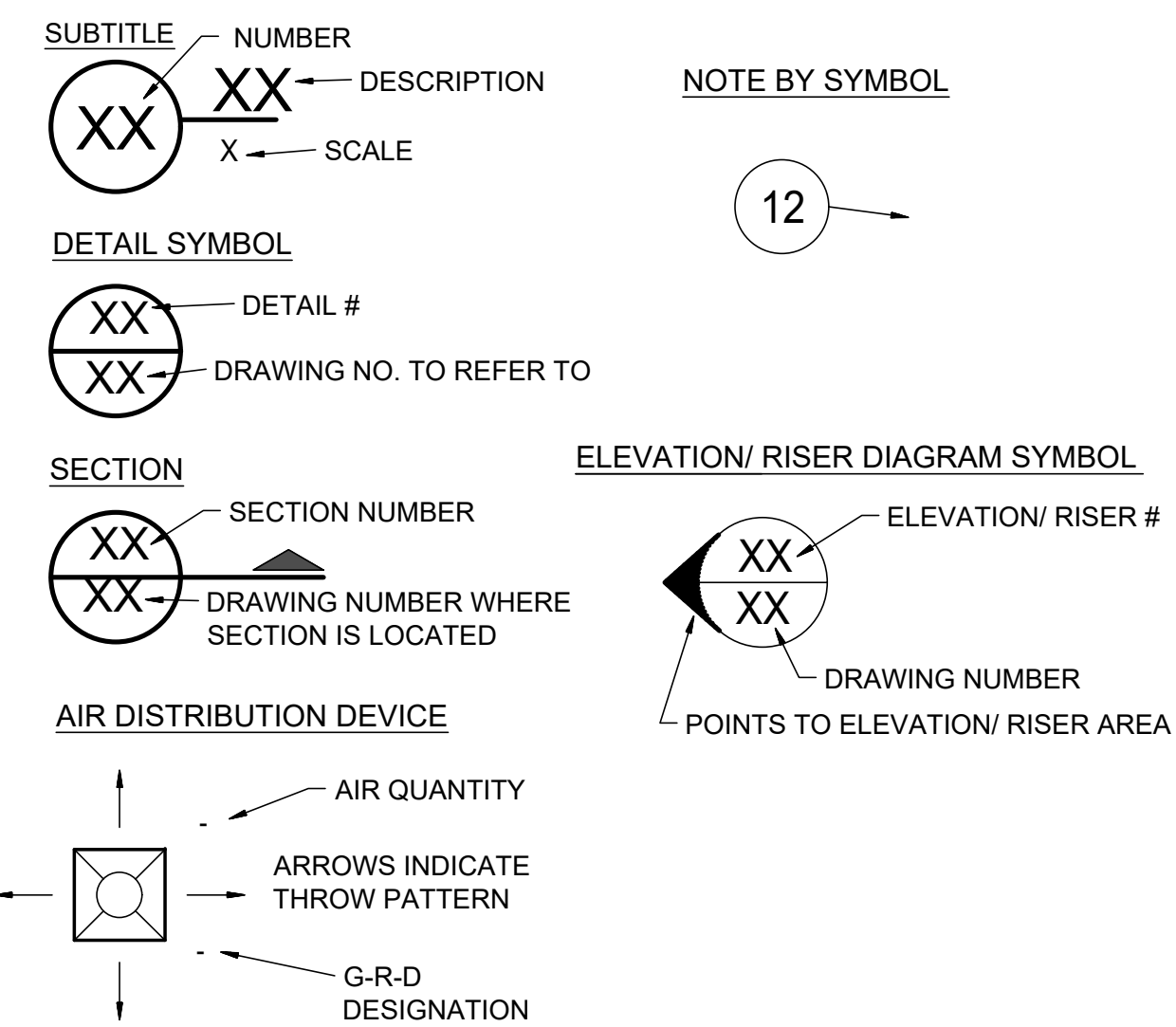
- PROVIDE ALL MATERIALS AND EQUIPMENT AND PERFORM ALL LABOR REQUIRED TO INSTALL COMPLETE AND OPERABLE MECHANICAL SYSTEM AS INDICATED ON THE DRAWINGS, AS SPECIFIED AND AS REQUIRED BY ALL NATIONAL, STATE AND LOCAL CODES.
- CONTRACT DRAWINGS FOR MECHANICAL WORK (HVAC, PLUMBING, AND FIRE PROTECTION) ARE DIAGRAMMATIC AND ARE INTENDED TO CONVEY SCOPE AND GENERAL ARRANGEMENT ONLY. IT IS THE CONTRACTORS RESPONSIBILITY FOR INSTALLING ALL MATERIALS PER SMACNA STANDARDS AND THE MANUFACTURER'S STANDARDS.
- ALL EXISTING SYSTEM INFORMATION AND/OR LOCATIONS ARE PROVIDED BY THE OWNER OR BY A 3RD PARTY. IT IS THE CONTRACTORS RESPONSIBILITY TO VERIFY ALL MEP SERVICES ARE LOCATED AS DESIGNED BEFORE BIDDING THE PROJECT. IN OCCURRENCES WHERE EXISTING DOES NOT MATCH DESIGNED, IT IS THE CONTRACTORS RESPONSIBILITY TO NOTIFY THE OWNER, ARCHITECT, & ENGINEER BEFORE PROCEEDING. IF ANY DISCREPANCIES ARE NOT IDENTIFIED AT BIDDING, THE COST SHALL BE ABSORBED BY THE CONTRACTOR AND NOT PASSED ONTO THE OWNER OR ENGINEER OF RECORD.
- COORDINATE CONSTRUCTION OF ALL MECHANICAL WORK WITH ARCHITECTURAL, STRUCTURAL, CIVIL, ELECTRICAL WORK, ETC., SHOWN ON THE OTHER CONTRACT DRAWINGS.
- WHEN TWO OR MORE ITEMS OF THE SAME TYPE OF EQUIPMENT ARE REQUIRED, THE PRODUCT OF ONE MANUFACTURE SHALL BE USED.
- ALL CONTROL WIRE AND CONDUIT SHALL COMPLY WITH THE LATEST EDITION NATIONAL ELECTRIC CODE AND DIVISION 16 (23) OF THE SPECIFICATION.
- ALL MISCELLANEOUS STEEL REQUIRED TO ENSURE PROPER INSTALLATION AND AS SHOWN IN DETAILS FOR PIPING, DUCTWORK, AND EQUIPMENT (UNLESS OTHERWISE NOTED) SHALL BE FURNISHED AND INSTALLED BY THE MECHANICAL CONTRACTOR.
- MECHANICAL EQUIPMENT, DUCTWORK, AND PIPING SHALL NOT BE SUPPORTED FROM METAL DECK.
- LOCATION AND SIZES OF ALL FLOOR, WALL, AND ROOF OPENINGS SHALL BE COORDINATED WITH ALL OTHER TRADES.
- PROVIDE REMOTE BALANCING DAMPERS SIMILAR TO 'YOUNG CONCEALED REGULATORS' FOR ALL TAPS MADE ABOVE INACCESSIBLE CEILING OR WALLS. FINISH CONCEALMENT COVERS PER ARCHITECTS RECOMMENDATIONS.
- ALL AHU AND FCU FANS SHALL OPERATE CONTINUOUSLY DURING THE OCCUPIED MODE OF OPERATION WITH ASSOCIATED OUTSIDE AIR MOTORIZED DAMPERS IN THE FULL OPEN POSITION (UNLESS NOTED OTHERWISE OR DCV SYSTEM). DAMPER SHALL BE CLOSED WITH THE FANS OPERATIONAL IN THE MORNING WARM UP OR COOL DOWN MODES.
- CONTRACTOR SHALL MAINTAIN A MINIMUM CLEARANCE OF 10'-0" BETWEEN OUTSIDE AIR INTAKE POINTS AND ANY EXHAUST AIR, CONTAMINATED RELIEF AIR OR PLUMBING VENT TERMINATION POINTS.
- CONDENSATE PIPING DOWN TO A PLUMBING FIXTURE SHALL BE FULLY INSULATED WITHIN WALL. PROVIDE ESCUTCHEON PLATE AT WALL. PIPING SHALL NOT BE ROUTED EXPOSED TO VIEW.
- PRESSURIZED LIQUID, GAS, AIR SYSTEM PIPE AND ELECTRICAL CONDUIT SHALL NOT BE ROUTED BENEATH ANY SUSPENDED EQUIPMENT. FIRE PROTECTION, ELECTRICAL AND MECHANICAL CONTRACTORS SHALL COORDINATE TRADES.
- ALL REMOTE MOUNTED DISCONNECT SWITCHES FOR MECHANICAL EQUIPMENT SHALL HAVE I.D. NAME PLATES.
- ALL DEMOLITION ACTIVITIES SHALL BE PERFORMED SO AS TO PROVIDE MINIMAL DISRUPTION TO THE NEIGHBORING TENANTS.
- ALL SAW CUTTING SHALL BE PERFORMED AFTER HOURS SO THAT OPERATION DOES NOT DISTURB NEIGHBORING TENANTS. THERE SHALL BE NO GAS POWERED EQUIPMENT IN TENANT AREAS.

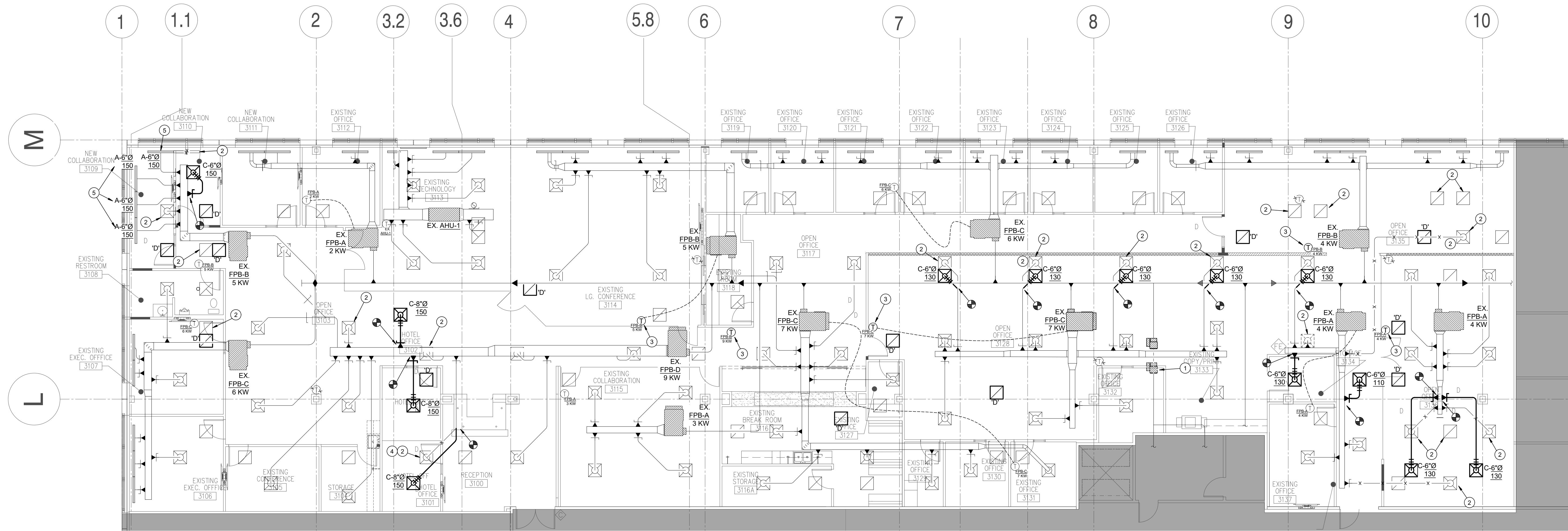
### PIPING DESIGNATIONS



### DRAWING SYMBOLS

(ALL SYMBOLS MAY NOT APPEAR ON DRAWINGS)





**01 FLOOR PLAN - MECHANICAL**  
SCALE: 1/8"=1'-0"

**GENERAL NOTES**

- SEE PLAN SHEET MP0.0 FOR NOTES, SYMBOLS, AND ABBREVIATIONS. REFER TO SPECIFICATIONS FOR ADDITIONAL PROJECT REQUIREMENTS.
- PROVIDE ACOUSTIC SEAL AT RETURN AIR TRANSFER, SUPPLY OR OUTSIDE AIR DUCTWORK FOR ALL ACOUSTIC WALLS TO DECK.
- CONTRACT DRAWINGS ARE DIAGRAMMATIC. CONTRACTOR SHALL INSTALL ALL MECHANICAL MATERIAL PER SMACNA STANDARDS.
- COORDINATE WITH ALL TRADES BEFORE INSTALLING ANY EQUIPMENT OR DUCTWORK.
- PROVIDE RADIUS FITTINGS FOR ALL DUCTWORK, WHERE NOT POSSIBLE SINGLE WALL TURNING VANES IN 30 - 45 DEG. TURNS IN DUCTWORK. TURNS GREATER THAN 45 DEG. SHALL BE DOUBLE WALL.
- REFER TO AIR DEVICE SCHEDULE FOR RUNOUT DUCT SIZED TO DIFFUSERS.
- ALL RUNOUTS TO AIR DEVICES SHALL INCLUDE BALANCING DAMPERS IN ALL SUPPLY AIR, RETURN AIR, AND EXHAUST AIR TAPS AND BRANCH DUCTWORK UNLESS OTHERWISE NOTED. PROVIDE REMOTE BALANCING DAMPERS FOR ALL TAPS MADE ABOVE INACCESSIBLE CEILINGS.

**NOTES BY SYMBOL "O"**

- CONTRACTOR TO MOVE VAV BOX PLAN NORTH OF NEW WALL AS SHOWN. ADJUST TAPS AS NECESSARY.
- REMOVE AND RELOCATE DIFFUSER/REGISTER AS NECESSARY. ADJUST TO CFM SHOWN FOR SUPPLY DIFFUSER. IF NOT RELOCATED, REMOVE AND RETURN TO OWNER.
- RELOCATED THERMOSTAT. CONTRACTOR TO VERIFY WITH OWNER ON EXACT LOCATION.
- PLACE D-TYPE RETURN REGISTER IN PLACE OF SUPPLY DIFFUSER.
- ADJUST DIFFUSER TO NEW CFM AS SHOWN.

**EXISTING AIR DEVICE SCHEDULE**

DESIG.	MFG.	DESCRIPTION	NECK SIZE INCHES	MATERIAL	OBD	MODEL NUMBER	NOTES
A	PRICE	24"x4" SUPPLY SLOT DIFFUSER	AS NOTED	ALUM.	N	TBD 3	1,2,3
B	PRICE	48"x4" SUPPLY SLOT DIFFUSER	AS NOTED	ALUM.	N	TBD 3	1,2,3
C	PRICE	24"x24" SQUARE CONE SUPPLY DIFFUSER	AS NOTED	ALUM.	N	SCD	1,2,3
D	PRICE	24"x24" PERFORATED RETURN DIFFUSER	AS NOTED	ALUM.	N	PRF	1,2,3

NOTES:  
1. MATCH FRAME OR AIR DEVICE WITH CEILING. REFERENCE ARCHITECTURAL REFLECTIVE CEILING PLANS AND ROOM FINISH SCHEDULE.  
2. REFER TO HVAC DRAWINGS FOR ANY NECK SIZES OTHER THAN THOSE SHOWN ABOVE.

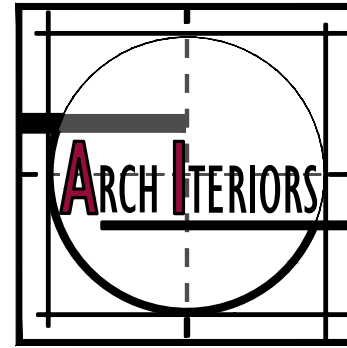
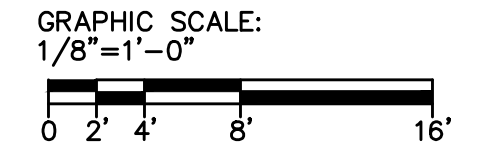
**EXISTING FAN POWERED MIXING BOX SCHEDULE**

DESIG.	INLET SIZE (IN.)	PRIMARY CFM		APD IN H2O	FAN CFM	POWER				MFG.	MODEL NUMBER	REMARKS
		MIN	MAX			FAN (V/PH)	FAN HP	HEATER (V/PH)	KW			
FPB-A	8"Ø	401	800	0.16	400	EXISTING				TRANE	VPEF	SEE NOTES
FPB-B	10"Ø	801	1100	0.05	550	EXISTING				TRANE	VPEF	SEE NOTES
FPB-C	12"Ø	1101	1600	0.03	800	EXISTING				TRANE	VPEF	SEE NOTES
FPB-D	14"Ø	1601	2200	0.04	1100	EXISTING				TRANE	VPEF	SEE NOTES

**EXISTING AIR HANDLING UNIT**

DESIG.	SERVES	NOM. TONS	SUPPLY FAN DATA					COOLING COIL DATA			HEATING COIL DATA				ELECTRICAL			MFG.	MODEL NUMBER	OP. WEIGHT (LBS.)	REMARKS	
			CFM	O/A	E.S.P. (IN)	DRIVE	HP	TOTAL MBH	SENS MBH	MIN ROWS	TOTAL MBH	WPD.(FT)	MIN ROWS	MCA	MOCP	MCA	MOCP					V / PH
EX AHU-1	TECH 3113	5.0	2,000	400	0.5	DIRECT	3/4	EXISTING			EXISTING			8.5	15	10.5	15	208 / 3	CARRIER	FV4CNB006	EXISTING	1

NOTES:  
1. PROVIDE CONTROL PANEL LABEL LISTING THE SHORT CIRCUIT RATING (SCR IN KAIC) REFER TO ELEC. POWER TO MECH. SCHEDULE FOR RATING REQMTS.



ARCHITECT **ARCH INTERIORS** 611 ALEXANDRIE DRIVE, DOW POINT, TX, 75068  
ENGINEER **MD ENGINEERING** 1255 W 15th Street, Suite 300  
PLANO, TX 75075

**Computacenter**  
COMPUTACENTER PLANO  
TENANT IMPROVEMENT  
COMPUTACENTER  
6111 W PLANO PKWY., SUITE 3100  
PLANO, TX 75093

**REVISIONS:**


PROJECT NO: 152.1421.00  
DRAWN BY: ET  
DATE: 09/09/21  
CHECKED BY: JS  
ISSUED FOR: BID/PERMIT

SHEET **M1.1**  
MECHANICAL