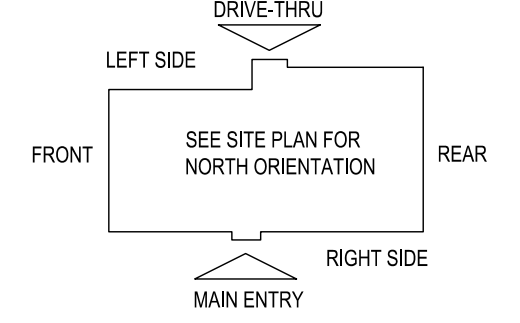


E5 HVAC PLAN
SCALE: 1/4" = 1'-0"



NOTE: ALL DUCTWORK TO BE LOCATED IN TRUSS SPACE WHERE POSSIBLE. SEE FRAMING PLAN.
HVAC SETPOINTS RECOMMENDED BY CORPORATE OPERATIONAL GUIDELINES:
1. DINING: HEATING 70 DEG, COOLING 72 DEG
2. KITCHEN: HEATING 68 DEG, COOLING 74 DEG

SUPPLY DUCTWORK SIZING TABLE*				
SIZE	ROUND		RECTANGULAR	
	CFM RANGE		SIZE	CFM RANGE
8"	115 - 235		8"x8"	205 - 300
10"	240 - 435		10"x8"	305 - 400
12"	440 - 710		10"x10"	405 - 550
14"	715 - 1,070		12"x10"	555 - 700
16"	1,075 - 1,530		12"x12"	705 - 900
18"	1,535 - 2,090		14"x12"	905 - 1,105
20"	2,095 - 2,760		16"x12"	1,110 - 1,315
22"	2,765 - 3,550		18"x12"	1,320 - 1,520
24"	3,555 - 4,470		20"x12"	1,525 - 1,740
*CONTRACTOR MAY SUBSTITUTE RECTANGULAR FOR ROUND DUCTWORK ON MAIN RUNS AT THEIR DISCRETION. BRANCHES TO DIFFUSERS TO REMAIN ROUND.				
			22"x12"	1,745 - 1,950
			24"x12"	1,955 - 2,170
			26"x12"	2,175 - 2,400
			28"x12"	2,405 - 2,630
			30"x12"	2,615 - 2,840
			32"x12"	2,845 - 3,070
			34"x12"	3,075 - 3,290
			36"x12"	3,295 - 3,520
			36"x14"	3,525 - 4,420

DIFFUSER, REGISTER, AND GRILLE SCHEDULE									
TAG	SERVICE	TYPE	MATERIAL	THROW	FACE	NECK	MOUNTING	MANUFACTURER/MODEL	Notes
SD-2	SUPPLY	LOUVERED	STEEL	4-WAY	24X24	SEE PLAN	LAY-IN	CARNES SPPA24	2, 4
SD-2 - NOT USED									
SD-3	SUPPLY	LOUVERED	STEEL	3-WAY	SEE PLAN	SEE PLAN	SURFACE	CARNES SKSA	2, 4
SD-4	SUPPLY	LOUVERED	STEEL	4-WAY	12X12	SEE PLAN	SURFACE	CARNES SKSA	1, 2, 4
SD-5	SUPPLY	PERFORATED	STEEL	PERFORATED	24X24	SEE PLAN	LAY-IN	CARNES SPRB24	2, 4
RG-1	RETURN	SQUARE EGGRATE	ALUMINUM	N/A	24X24	22X22	LAY-IN	CARNES RAMPF	2, 3, 4
EG-1	RETURN	LOUVERED GRILLE	STEEL	N/A	12X12	SEE PLAN	SURFACE	CARNES RFLAH	1, 2, 4
TG-1	TRANSFER	LOUVERED GRILLE	STEEL	N/A	SEE PLAN	SEE PLAN	SURFACE	CARNES RFLAH	2, 4
DIFFUSER NOTES:									
1. PROVIDE w/ ADJUSTABLE OPPOSED BLADE DAMPER									
2. VERIFY ALL DIFFUSERS AND RETURN GRILLE COLORS WITH OWNER AND ARCHITECT									
3. PROVIDE w/ 22X22 PLENUM BOX.									
4. ALL DIFFUSERS AND RETURNS LOCATED IN BLACK CEILING SHALL BE FLAT BLACK FINISH.									

GENERAL NOTES

- DEVIATIONS FROM THE HVAC PLANS ARE THE RESPONSIBILITY OF THE HVAC CONTRACTOR & WILL NOT RESULT IN ADDITIONAL COSTS TO THE OWNER UNLESS WRITTEN CHANGE ORDERS ARE APPROVED BY THE OWNER.
- ALL WORK TO BE PERFORMED TO STATE CODE & SMACNA GUIDELINES.
- INSTALL UNITS ACCORDING TO MANUFACTURERS GUIDELINES.
- PROVIDE OWNER W/ OPERATING & MAINTENANCE MANUALS & SYSTEM SCHEMATICS.
- CONTRACTOR TO CONFIRM VOLTAGES & PHASES OF EQUIPMENT PRIOR TO INSTALLATION.
- VERIFY ALL EXISTING CONDITIONS PRIOR TO INSTALLATION (DRAWINGS ARE DIAGRAMMATIC IN NATURE & DO NOT REFLECT EXACT LOCATIONS OF EQUIPMENT OR OTHER APPARATUS).
- PROVIDE SHOP DRAWINGS TO THE ARCHITECT/DESIGNER FOR EQUIPMENT, FANS, REGISTERS, ETC. PRIOR TO PROCUREMENT.
- PROVIDE OWNER W/ COLOR CHOICES FOR SWITCHES & OTHER APPARATUS WHERE APPLICABLE.
- VENT OWNER WATER HEATER AS REQUIRED.
- VENT DRYER THRU SIDEWALL TO EXTERIOR AS REQUIRED. MAINTAIN CLEARANCE FROM INTAKES AS NOTED.
- HANG & SUPPORT MATERIALS SHALL BE INSTALLED THE LATEST EDITION OF THE ASHRAE HANDBOOK OF FUNDAMENTALS.
- MAINTAIN AT LEAST 10 FEET CLEARANCE FROM INTAKES OR WINDOWS ON ALL EXHAUST VENTS.
- TEST, ADJUST, & CALIBRATE CONTROL SYSTEMS AS REQUIRED. PROVIDE SCHEMATICS / DESCRIPTION TO THE OWNER PRIOR TO INSTALLATION.
- INSTALLER RESPONSIBLE FOR FINAL TEST & BALANCING DURING TRAINING WEEK. PROVIDE WRITTEN REPORT BY THIRD PARTY INDEPENDENT TAB CONTRACTOR.
- HVAC CONTRACTOR TO INSTALL #2 GAS W/ 1/4" WATER COLUMN MAX. PER STATE CODE & AGA GUIDELINES (LABEL AS REQUIRED).
- CONTRACTOR TO VERIFY GAS METER CAPACITY W/ LOCAL GAS SUPPLIER.
- VERIFY W/ OWNER EXACT HEATER LOCATION TO AVOID BUILDING FUNCTION INTERFERENCE.
- REPLACE ALL AIR FILTERS PRIOR TO TURNING SYSTEM OPERATIONS OVER TO OWNER.
- HVAC CONTRACTOR IS RESPONSIBLE FOR A COMPLETE & FULLY WORKING SYSTEM.
- DUCT DIMENSIONS LISTED ARE NET FREE - CLEAR INSIDE DIMENSIONS.
- VERIFY DUCT LOCATIONS PRIOR TO FABRICATION. (VERIFY LIMITED AREA FOR DUCTWORK & OTHER APPARATUS).
- INSULATE DUCT WORK TO SMACNA GUIDELINES & STATE CODES.
- INSTALL VOLUME CONTROL DAMPERS AS INDICATED ON PLANS.
- FLEXIBLE ROUND DUCT WORK NOT TO EXCEED 8 FEET IN LENGTH, AVOID UNNECESSARY TURNS & SLACK.
- VERTICAL RETURN AIR DUCT WORK DOWN FROM RTUS TO BE LINED FOR SOUND ATTENUATION.
- DUCT WORK TO BE STANDARD GAUGE SHEET METAL (FIBROUS DUCT NOT ALLOWED).
- INSULATE EXHAUST DUCT FOR EXHAUST FAN TO EXTERIOR TERMINATION.
- COORDINATE WORK W/ GENERAL CONTRACTOR & OWNER TO MAXIMIZE CEILING HEIGHT & AVOID CONFLICTS.
- S/S WALL PANELS FOR THE KITCHEN AREA ARE TO BE FURNISHED AND INSTALLED BY THE HVAC CONTRACTOR. PANELS ARE TO BE 18 GA. TYPE 304 S/S. SEE DETAILS AND LOCATIONS ON THE A103 DRAWING.
- EXHAUST FANS AND FURNACE FANS TO RUN CONTINUOUSLY DURING OCCUPIED MODE.
- NIGHT SET BACK THERMOSTATS TO BE INSTALLED ON ALL HVAC EQUIPMENT.

NATIONAL ACCOUNT PROGRAM

- LENNOX INDUSTRIES, INC.** - ROOFTOP HVAC EQUIPMENT
National Accounts Sales: (800) 367-6285 Option #1 lennoxna.com
National Account Technical Support: (800) 367-6285 Option #2 lennoxna.com
- ACCUREX GREENCHECK FAN CORPORATION** - KITCHEN HOODS, EXHAUST FANS, ROOF CURBS, ANSUL SYSTEMS, ACCESSORIES AND TEST AND BALANCE
CONTACT: sales@accurex.com 815-730-3000 or support@accurex.com
Secondary contact: Phila Kraft 1-282-227-7980 philak@accurex.com
ACCUREX WILL PROVIDE BALANCED AIRFLOW AND FUNCTIONAL CHARACTERISTICS OF THE HOOD AS THEY RELATE TO AIRFLOW AND RESISTANCE ONLY. SERVICES TO BE PERFORMED BY A CERTIFIED NEBB FIRM AND ITS MANAGING GROUP - NATIONAL TAB
- CARNES COMPANY** - DIFFUSERS AND GRILLES
National Accounts Sales: Chris Stricker @ (800) 845-6411 cstricker@carne.com
National Accounts Rep: Brian Baker @ (308) 845-6411 bbaker@carne.com

MECHANICAL EQUIPMENT SPECIFICATIONS

- RTU-1 **LENNOX EMERGENCY SERIES LGH240-H48 W/ PRODIGY CONTROLLER**
COMBINATION GAS W/ HIGH TWO-STAGE HEATING & ELECTRIC COOLING ROOFTOP UNIT W/ HUMIDITROL & STAINLESS STEEL HEAT EXCHANGER, LOW HEAT 234,000 BTU/HR & HIGH HEAT 360,000 BTU/HR INPUT HEATING CAPACITY, 80.0% EFF. 240,000 NOMINAL COOLING CAPACITY, 12.0 EER, 208 / 230 VOLT, 3 PHASE, 100 MOPC (NOTIFY ELECTRICAL CONTRACTOR IF BREAKER SIZE CHANGES), 6,750 CFM CONSTANT VOLUME SUPPLY, 1.955 CFM OA MINIMUM. IN ADDITION TO THE OPTIONS LISTED ABOVE, INCLUDE THE FOLLOWING FACTORY INSTALLED OPTIONS: WEATHERPROOF DISCONNECT SWITCH, FACTORY INSTALLED FIELD POWERED GFCI, RETURN AIR SMOKE DETECTORS, DRAIN PAN OVERFLOW SWITCH, SINGLE ENTHALPHY ECONOMIZER WITH BAROMETRIC RELIEF AND HOODS, INCLUDE THE FOLLOWING FIELD INSTALLED OPTIONS: 2" MERV13 FILTERS, SPARE BELT, DOWN FLOW HYBRID CURB, PVC DRAIN TRAP KIT, REMOTE HUMIDITY SENSOR, MESH HAIL GUARD, LENNOX MODEL 13H15 PROGRAMMABLE THERMOSTAT. **NO SUBSTITUTIONS.**
- RTU-2 **LENNOX EMERGENCY SERIES LGH210-H48 W/ PRODIGY CONTROLLER**
COMBINATION GAS W/ HIGH TWO-STAGE HEATING & ELECTRIC COOLING ROOFTOP UNIT W/ HUMIDITROL & STAINLESS STEEL HEAT EXCHANGER, LOW HEAT 169,000 BTU/HR & HIGH HEAT 260,000 BTU/HR INPUT HEATING CAPACITY, 80.0% EFF. 210,000 NOMINAL COOLING CAPACITY, 12.0 EER, 208 / 230 VOLT, 3 PHASE, 100 MOPC (NOTIFY ELECTRICAL CONTRACTOR IF BREAKER SIZE CHANGES), 6,150 CFM CONSTANT VOLUME SUPPLY, 1.495 CFM OA MINIMUM. IN ADDITION TO THE OPTIONS LISTED ABOVE, INCLUDE THE FOLLOWING FACTORY INSTALLED OPTIONS: WEATHERPROOF DISCONNECT SWITCH, FACTORY INSTALLED FIELD POWERED GFCI, RETURN AIR SMOKE DETECTORS, DRAIN PAN OVERFLOW SWITCH, SINGLE ENTHALPHY ECONOMIZER WITH BAROMETRIC RELIEF AND HOODS, INCLUDE THE FOLLOWING FIELD INSTALLED OPTIONS: 2" MERV13 FILTERS, SPARE BELT, DOWN FLOW HYBRID CURB, PVC DRAIN TRAP KIT, REMOTE HUMIDITY SENSOR, MESH HAIL GUARD, LENNOX MODEL 13H15 PROGRAMMABLE THERMOSTAT. **NO SUBSTITUTIONS.**
- PRV-1 **RESTROOM EXHAUST FAN - REFER TO SHEET M204**
- PRV-2 **GRIDDLE EXHAUST FAN - REFER TO SHEET M202**
- PRV-3 **FRYER EXHAUST FAN - REFER TO SHEET M203**
- EF-1A **MOP ROOM EXHAUST FAN - REFER TO SHEET M204**
- ITEM #49A **GRIDDLE HOOD - REFER TO SHEET M202**
- ITEM #59A **FRYER HOOD - REFER TO SHEET M203**
- ECH-1 **ELECTRIC CEILING HEATER Q-MARK OR EQUAL CDF-548 ELECTRIC CEILING HEATER & CDF RECESSED MOUNTING FRAME, CDF-TR4 TRANSFORMER & WALL MOUNTED THERMOSTAT, 208/240 VOLT SINGLE PHASE = 19.2 AMPS (SUPPLIED AND INSTALLED BY ELECTRICAL CONTRACTOR.)**

CONTROL NOTES

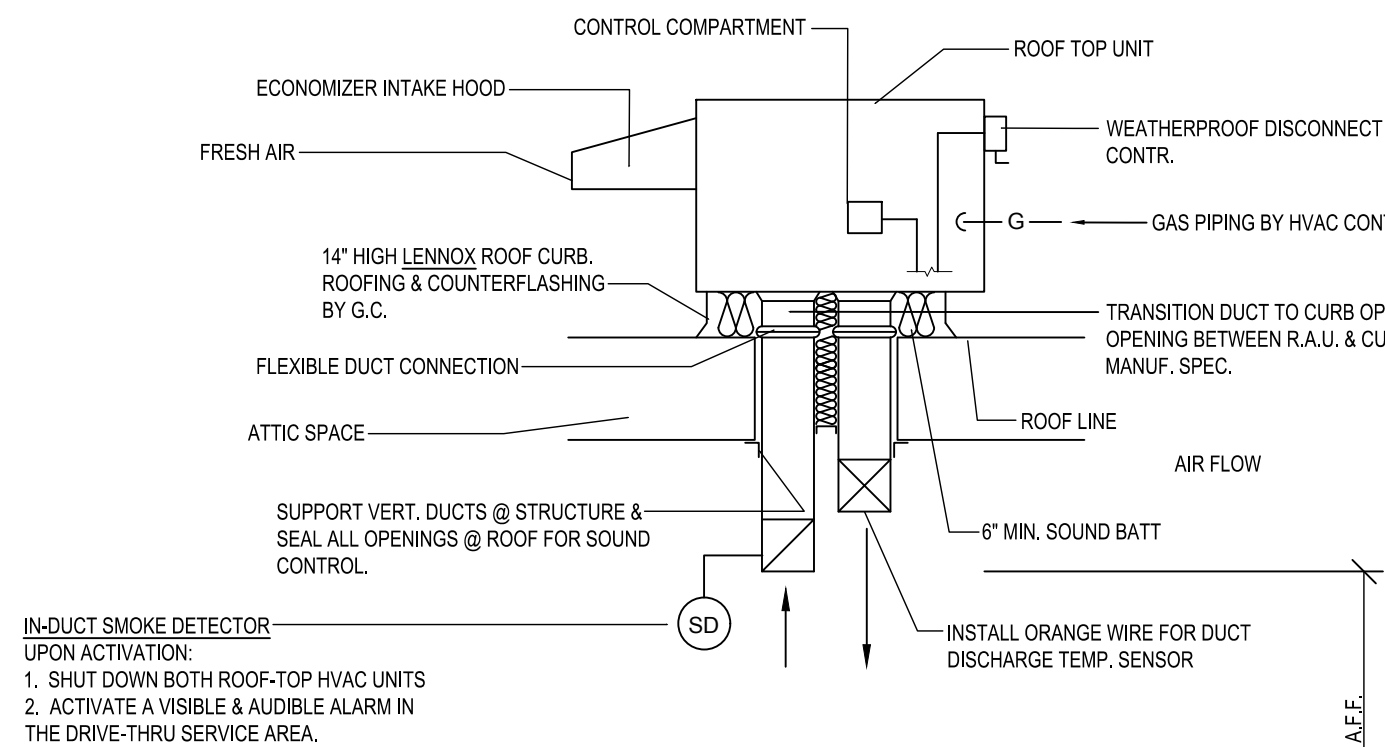
NOTE: KITCHEN HOODS SUPPLIED AND INSTALLED BY HVAC CONTRACTOR

- WIRE RTU-1, RTU-2 TO SHUT-DOWN EXHAUST HOOD FANS TO CONTINUE TO RUN UPON ACTIVATION OF THE ANSUL SYSTEM.
- WIRE RTU-1 & RTU-2 TO SHUT-DOWN UPON ACTIVATION OF ANY IN-DUCT SMOKE DETECTOR.
- OCCUPIED MODE: FANS IN RTU-1 & RTU-2, EXHAUST FANS PRV-1, PRV-2, PRV-3 AND EF-1 TO RUN CONTINUOUSLY.
- UNOCCUPIED MODE: FANS IN RTU-1 & RTU-2 TO RUN ONLY WHEN COOLING OR HEATING IS CALLED FOR.

TEST & BALANCE NOTES

- ACCUREX WILL PROVIDE BALANCED AIRFLOW & FUNCTIONAL CHARACTERISTICS OF THE HVAC SYSTEM AS THEY RELATE TO AIRFLOW & AIR PRESSURE ONLY. SERVICES TO BE PERFORMED BY A CERTIFIED NEBB FIRM & ITS MANAGING GROUP NATIONAL TAB.
- SERVICES NOT INCLUDED, PULLEY / SHEAVE CHANGES, MOTOR CHANGE OUTS, OR RETURN TRIPS DUE TO DELAYS CAUSED BY JOB INCOMPLETENESS.

AIR BALANCE TABLE				
EXHAUST AIR FLOW				
EQUIPMENT TAG	SERVICE			CFM
PRV-1	RESTROOMS			375
PRV-2	ITEM #49			1,500
PRV-3	ITEM #59			1,500
EF-1A	MOP ROOM			75
TOTAL =				3,450
VENTILATION REQUIRED PER 2018 INTERNATIONAL MECHANICAL CODE				
EQUIPMENT TAG	SERVICE			CFM
RTU-1	DINING ROOM			1,953
RTU-2	KITCHEN			223
TOTAL =				2,176
3,450 > 2,176 -> USE 3,450 CFM FOR OUTSIDE AIR CFM				
OVERALL AIRFLOW SUMMARY				
EQUIPMENT TAG	SERVICE	SUPPLY CFM	RETURN CFM	OUTSIDE AIR CFM
RTU-1	DINING ROOM	6,750	4,795	1,955
RTU-2	KITCHEN	6,150	4,655	1,495
TOTAL OUTSIDE AIR CFM =				3,450



A6 ROOFTOP HVAC UNIT

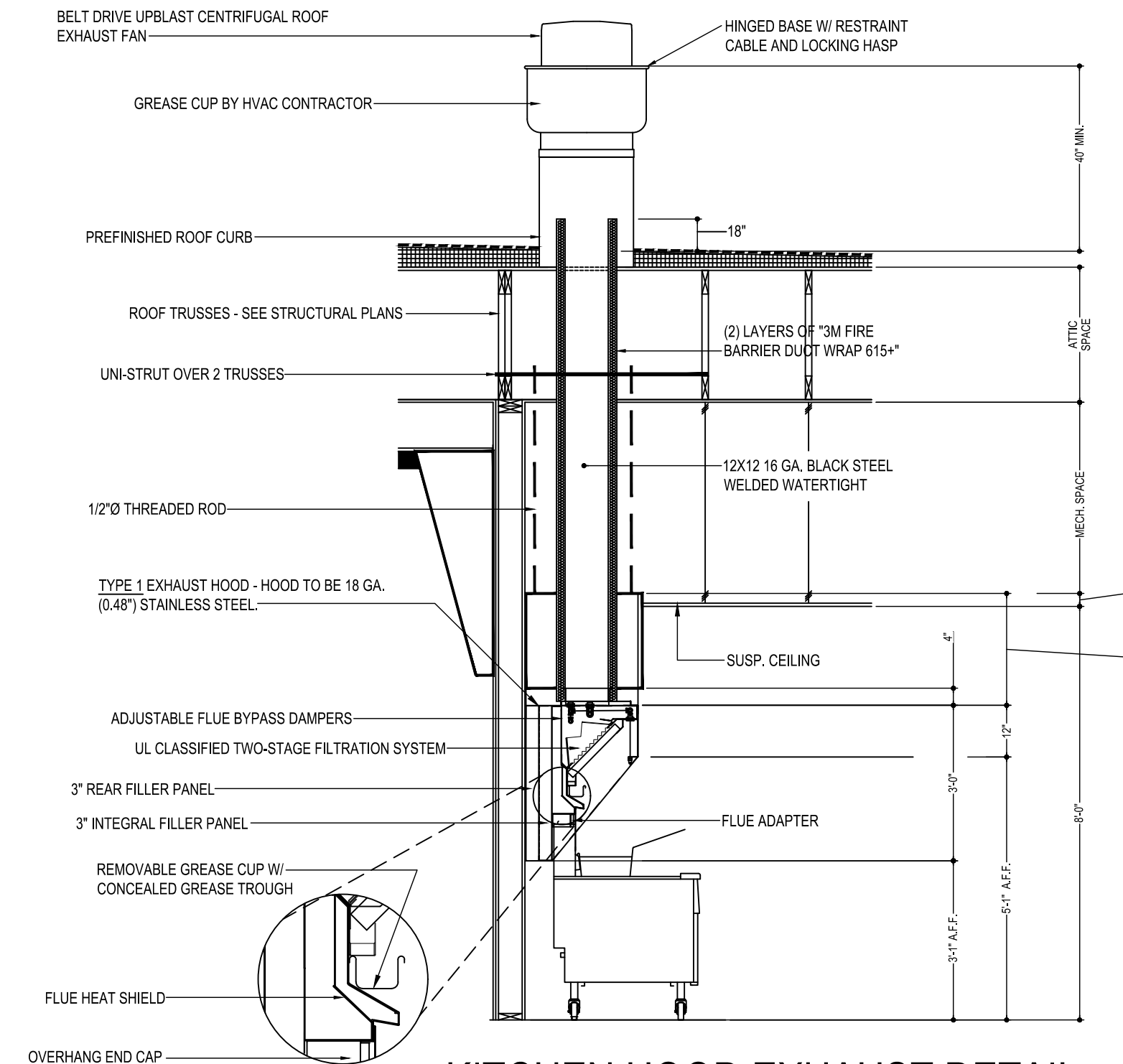
SCALE: N.T.S.

COOKING APPLIANCE / TYPE 1 HOOD INTERLOCK

- REMOTE SWITCH ON - POWER TO KITCHEN FAN CONTROL CENTER (KFC).
- KFC CONTROLS:
 - EXHAUST FANS PRV-2 (GRILLE) & PRV-3 (FRYERS) ARE STARTED.
 - OPENS OUTSIDE AIR INTAKE ON RTU-1 & RTU-2 TO MINIMUM FRESH AIR OPENING.
 - POWER TO OUTLETS #51 (GRILLE) & #60 (FRYERS).
- GRILLE & FRYER CAN BE STARTED.
- IN CASE OF FIRE:
 - SHUNT TRIP BREAK FOR GRILLE & FRYERS OUTLET TRIPS.
 - ANSUL SYSTEM IS ACTIVATED.
 - THE MECHANICAL GAS VALVES CLOSES.
 - SHUT DOWN RTU-1 & RTU-2 & CLOSE OUTSIDE AIR.
 - EXHAUST FANS PRV-2 & PRV-3 CONTINUE TO RUN.

GREASE HOOD FIRE SUPPRESSION SYSTEM

WET-CHEMICAL EXTINGUISHING SYSTEMS SHALL BE INSTALLED, MAINTAINED, PERIODICALLY INSPECTED AND TESTED IN ACCORDANCE WITH NFPA 17A AND THEIR LISTING.



C3 KITCHEN HOOD EXHAUST DETAIL

SCALE: N.T.S.
VERIFY MOUNTING HEIGHTS W/ OWNER AND GENERAL CONTRACTOR

LENNOX SETTINGS FOR CULVERS

KITCHEN UNIT

PARAMETER 3.01 HEAT DELAY NEEDS TO BE SET TO "DISABLED". CONTROL PARAMETER 3.01=0 PG. 92
ECONOMIZER DIP SWITCHES A56 (EM1) NEED TO BE SET TO "GLOBAL" MODE. 1-ON 2-OFF (PG. 5 FIG 8)
ECONOMIZER MIN POSITION POTENTIOMETER NEEDS TO BE DETERMINED AND SET BY AIR BALANCER. (PG. 52 FIG 33)
BOTH THE THERMOSTAT AND THE HOOD FANS MUST BE TIED INTO TB1 TERMINAL 8&9 FOR OCCU/NOCC CONTROL.
FRESH AIR TEMPERING (HEATING) CONTROL PARAMETER 6.20=160 *-55F" (KITCHEN IS USUALLY IN COOLING MODE)
(PARAMETER 6.20 PG 98, X CHARTS PG 109)

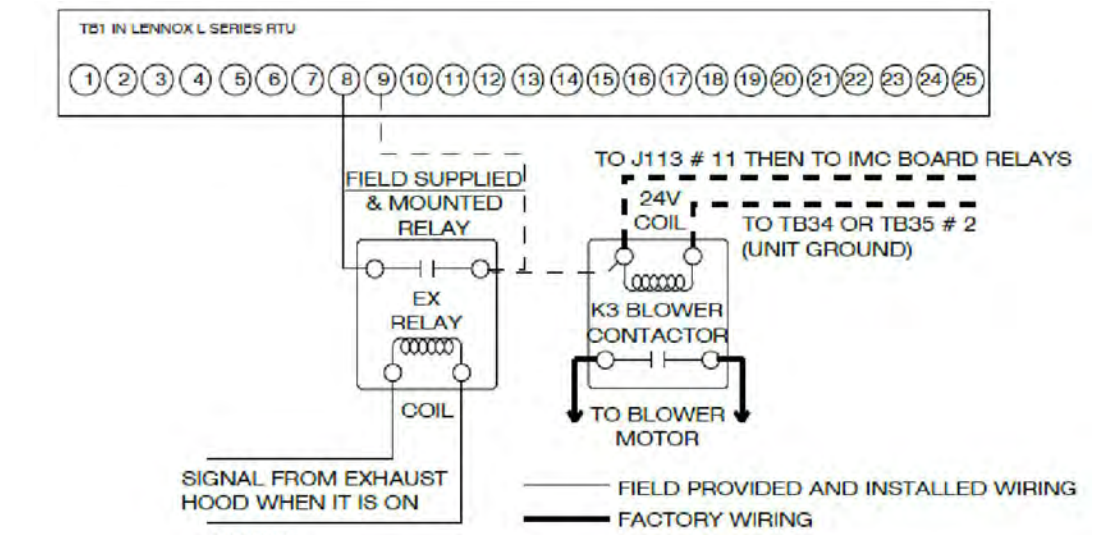
DINING ROOM UNIT

PARAMETER 3.01 HEAT DELAY NEEDS TO BE SET TO "DISABLED". CONTROL PARAMETER 3.01=0 PG. 92
ECONOMIZER DIP SWITCHES A56 (EM1) NEED TO BE SET TO ECONOMIZER TYPE PURCHASED/INSTALLED. 1=7 2=7
(PG 5 FIGURE 8)
ECONOMIZER MIN POSITION POTENTIOMETER NEEDS TO BE DETERMINED AND SET BY AIR BALANCER. (PG. 52 FIGURE 33)
THE THERMOSTAT MUST BE TIED INTO TB1 TERMINAL 8&9 FOR OCCU/NOCC CONTROL.
FRESH AIR TEMPERING (HEATING) CONTROL PARAMETER 6.20=142 "68F" (ROOM NEUTRAL)
(PARAMETER 6.20 PAGE 99, X CHARTS PAGE 109)

OTHER PARAMETERS THAT WE DIDNT SET, BUT ARE PART OF START-UP:

- ROOM SET POINT
- REMOTE SENSOR OPERATION
- TEMP DEADBANDS

CHECK FOR CORRECT OPERATION AND WIRING OF ALL SENSORS.



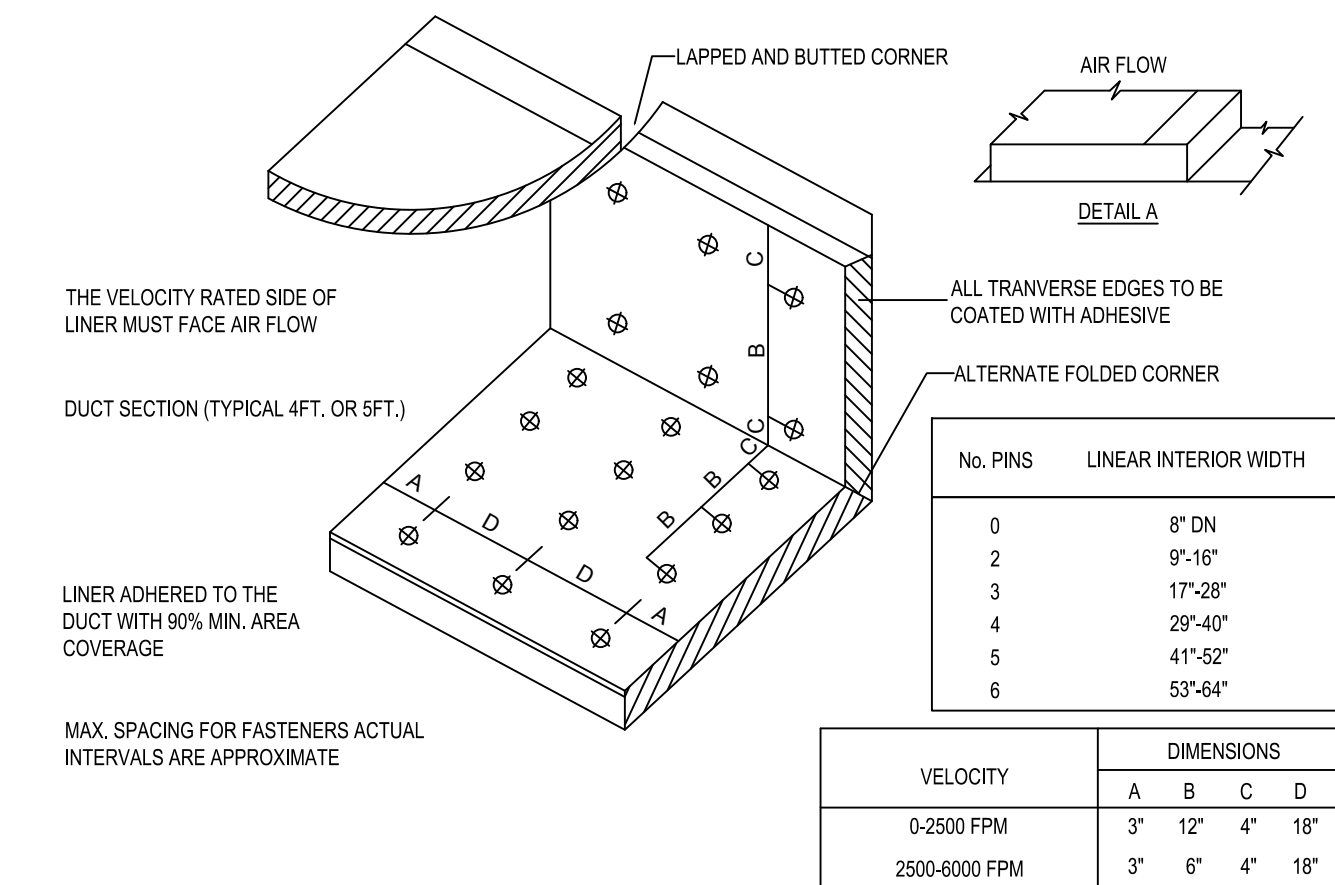
NOTES:

- EX RELAY AND WIRING PROVIDED AND INSTALLED BY THE MECHANICAL CONTRACTOR.
- WIRING FROM EX RELAY CONTACTS TO THE COIL OF THE K3 BLOWER CONTACTOR MUST LAND ON THE SAME SIDE AS THE WIRE MARKED J113 # 11.

CONTACTS FROM KITCHEN EXHAUST FAN STARTER ENERGIZE OPERATOR COIL OF A FIELD PROVIDED AND FIELD INSTALLED RELAY. THE RELAY CONTACTS ARE USED TO MAKE AND BREAK THE OCCUPIED SIGNAL BETWEEN TERMINALS B AND B, ON TB1, AND INSURE K3 BLOWER IS ENERGIZED, CREATING THE OCCUPIED CALL WILL MAKE THE ECONOMIZER MINIMUM POSITIONER ACTIVE, THEREBY MEETING FRESH AIR REQUIREMENTS. ECONOMIZER WILL MODULATE DAMPERS BEYOND MINIMUM POSITION SETTING, WHEN OUTDOOR AIR IS DEEMED SUITABLE FOR COOLING. DAMPERS WILL MODULATE TO TARGET 55 DEG F (DEFAULT) DISCHARGE AIR TEMPERATURE WHEN PROVIDING FREE COOLING.

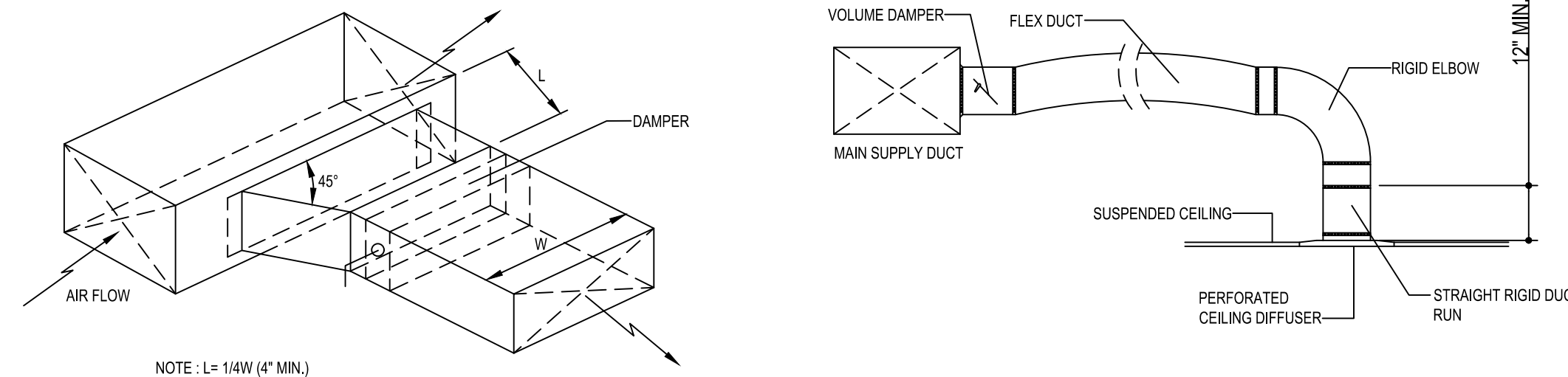


CULVERS EXHAUST FAN INTERLOCK FOR STORES WITHOUT MCP CONTROLLER



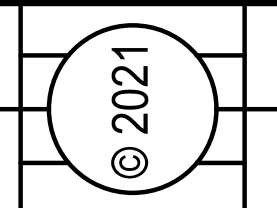
E5 DUCT LINER INSTALLATION DETAIL

SCALE: N.T.S.
NOTE: USE ONLY ON VERTICAL DROP FROM RTU TO WITHIN 9'-10" A.F.F., DUCT LINER WILL NOT BE PERMITTED ON ANY HORIZ. RUNS.



C6 BRANCH DUCT TAKEOFF DETAILS

SCALE: N.T.S.

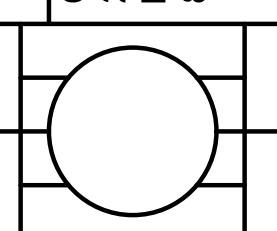


CULVERS OF HARTFORD
1285 East Summer Street
Hartford, WI 53027
County of WASHINGTON

Culvers
Culver Franchising System, Inc.
1240 Water Street
Prairie du Sac, WI 53578
608-643-7980

OWNER:
S7 L PROPERTIES HARTFORD, LLC
200 South State Street
Portage, WI 53901
Jeff Legel
608-742-2893

OLLMANN ERNEST MARTIN ARCHITECTS
200 South State Street
Belvidere Illinois 61008
815-544-7790 Phone



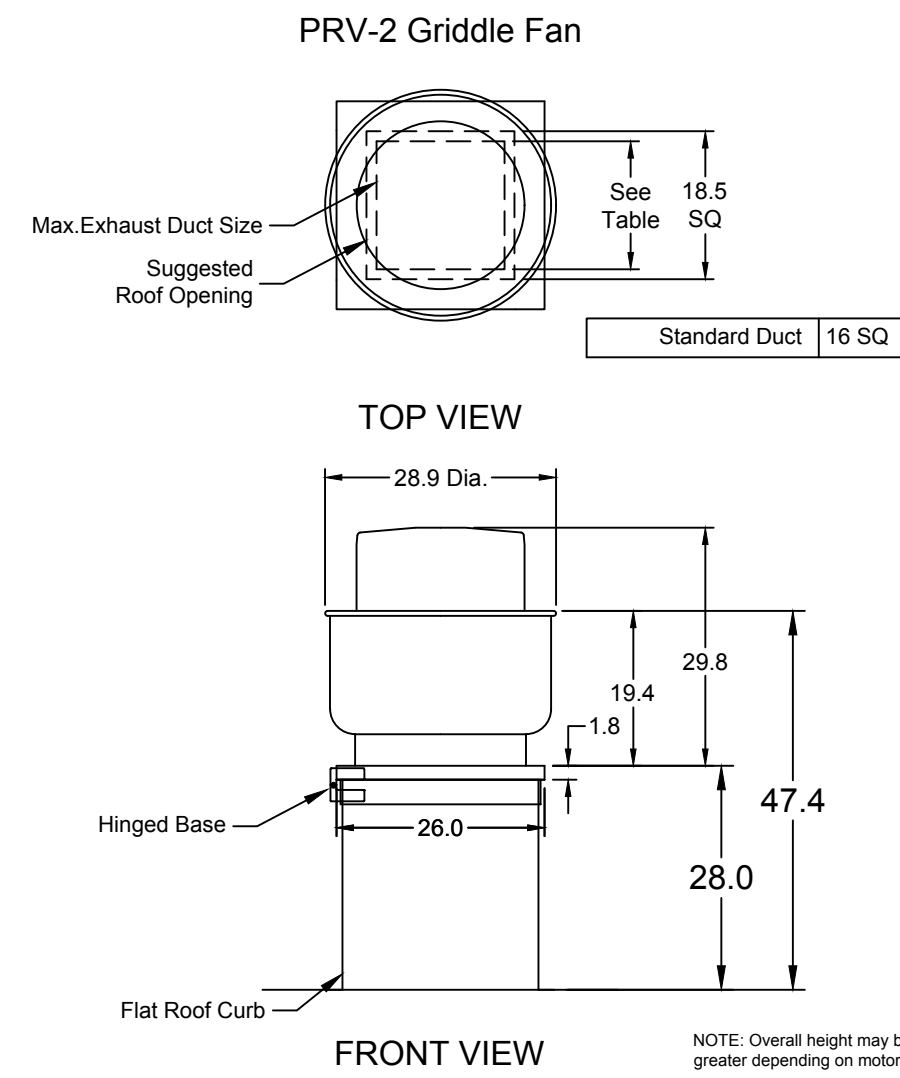
© OEMA
All rights reserved; any copying, transmittal or disclosure subject to OEMA written approval.

HVAC SCHEDULE & DETAILS

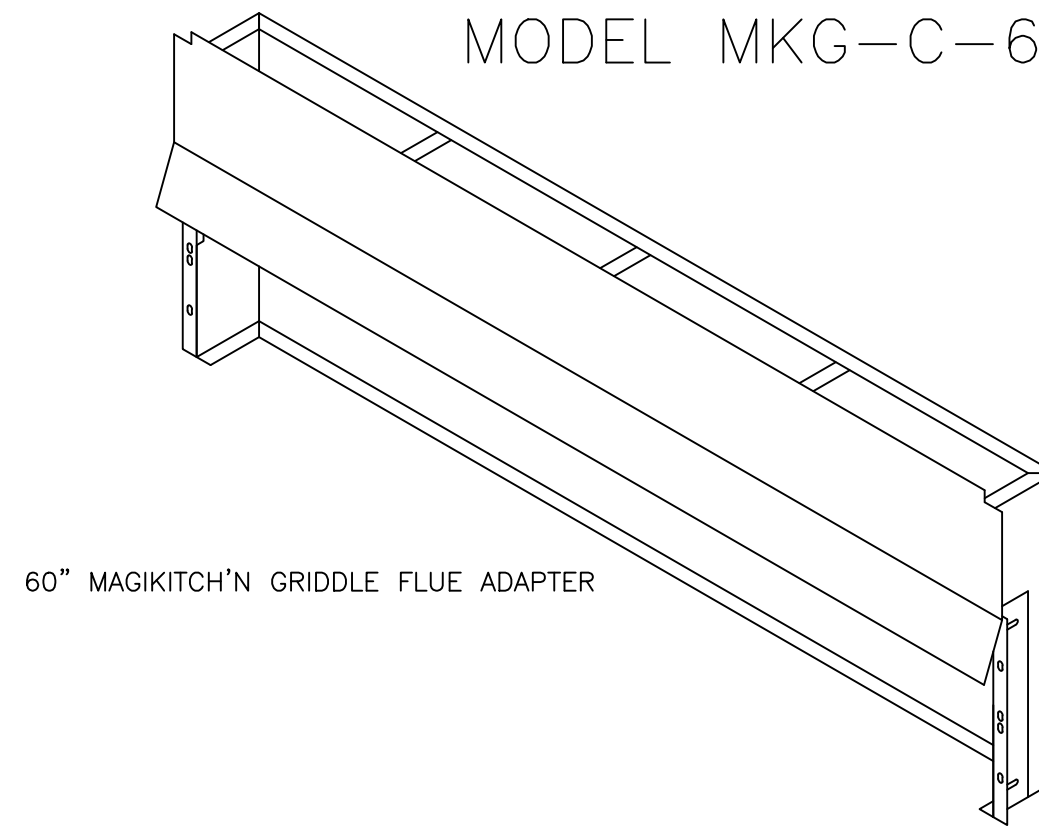
Revision:
Date: 11-19-2021

2021-127

M201

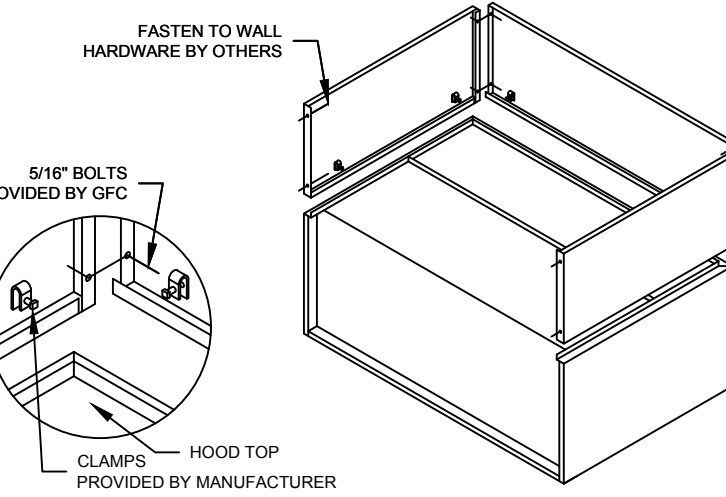


MUST USE WITH MAGIKITCH'N MODEL MKG-C-60



60" MAGIKITCH'N GRIDDLE FLUE ADAPTER

ENCLOSURE PANEL INSTALLATION DETAIL



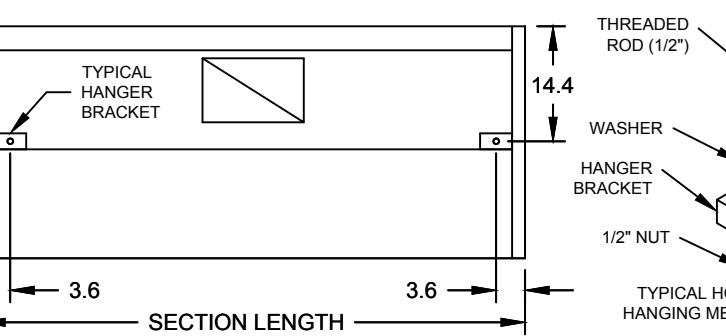
HOOD HANGING HEIGHT FOR FIRE SYSTEMS

VERIFICATION OF HOOD HANGING HEIGHT ABOVE FINISHED FLOOR (A.F.F.) IS REQUIRED FOR CORRECT PLACEMENT OF FIRE SYSTEM NOZZLES.

RECOMMENDED HANGING HEIGHT = 60" FROM FINISHED FLOOR TO LOWER FRONT EDGE OF HOOD.

OTHER HANGING HEIGHT = _____ FROM FINISHED FLOOR TO LOWER EDGE OF HOOD.

HOOD HANGER BRACKET DETAIL FOR BACKSHELF HOODS



GENERAL DRAWING NOTES

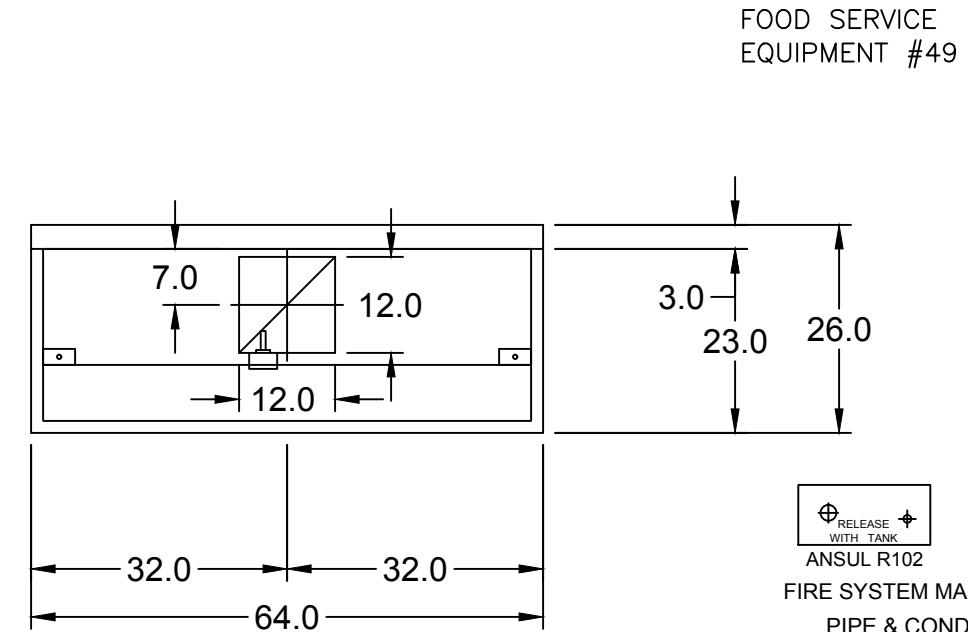
Verify building entry conditions or limitations for equipment access to space.
Verify type and height of finished ceiling and if hood(s) may extend above finished ceiling (if required).
Seismic installation and bracing of equipment is by others.
Greenheck will not accept liability for problems that result from sub-standard installation. Including field electrical wiring that deviate from supplied diagrams, jobsite conditions (ductwork, fuel types and structural conditions) that GFC has not been notified of at the time of ordering. Or use of this equipment other than that for which it is designed.
It is the responsibility of the purchaser to hire qualified personnel for installation and start-up of all equipment. Installation and start-up information is shipped with all equipment via the Installation, Operation and Maintenance Manual (IOM), also included is a troubleshooting guide. Have all start-up info available prior to any warranty claims and/or factory technical support.

VENTILATION SYSTEM NOTES

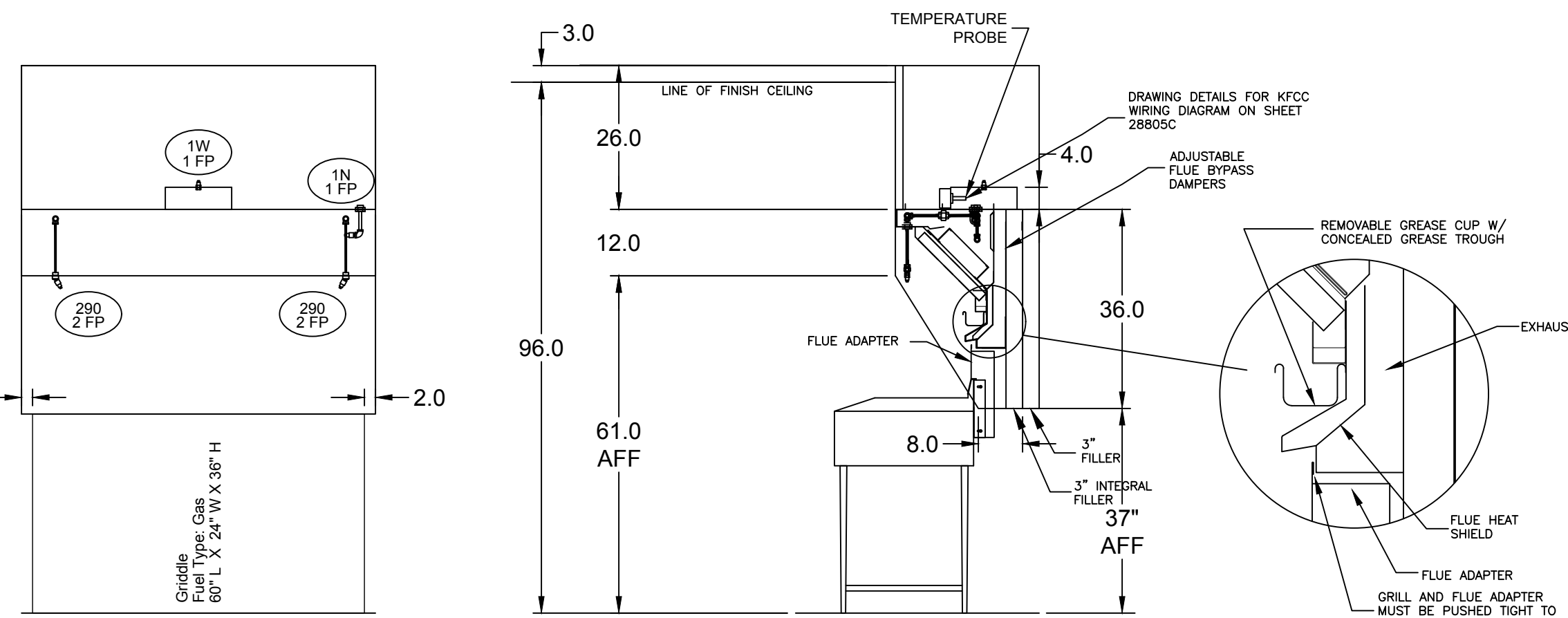
Greenheck ventilators are designed in compliance with all national codes: NFPA # 96, national electric code, BOCA, uniform mechanical code, international mechanical code, and southern building conference. See national evaluation report #430 for allowable values, and/or conditions of use concerning material presented in this document. Local codes may vary. It is the responsibility of the purchaser to submit drawings to local authorities.
Exhaust and supply air volumes are to be maintained within -5% to +10% tolerance of values indicated. Static pressure(s) indicated are for the ventilator at the duct connection(s) only.
The grease filter face velocities are based on the filter manufacturers recommendations for maximum grease extraction. Inlet opening air velocities for waterwash, dry cartridge and high velocity cartridge filters manufactured by Greenheck are designed to deliver maximum grease extraction.
Hoods installation (by others unless otherwise noted) shall be in accordance with NFPA # 96 and applicable building codes.

PROPRIETARY INFORMATION NOTICE

This document is and contains confidential trade secret information of the company and remains property of the company and is to be returned upon request. Neither this information contains nor may be reproduced or disclosed to persons not having a need-to-know consistent with the purpose of the loan document without written permission.



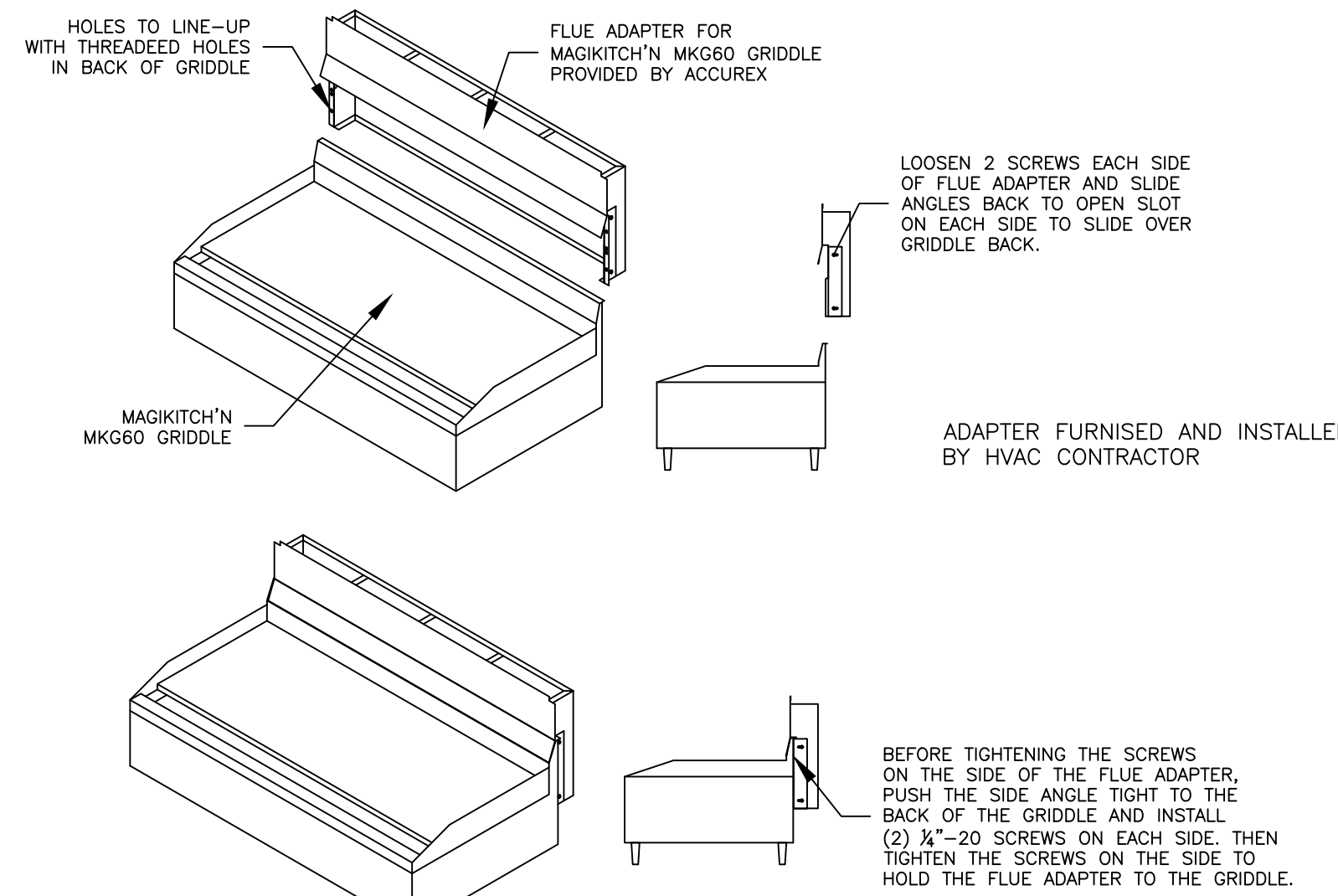
MARK: ITEM #49 PLAN VIEW



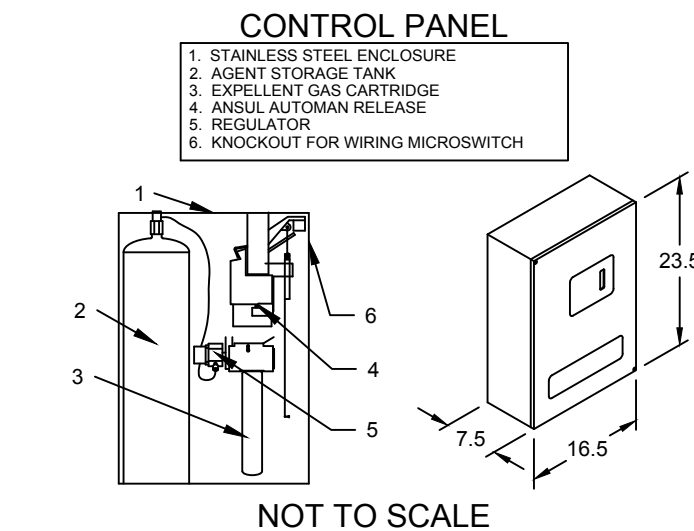
MARK: ITEM #49 ELEVATION VIEW

MARK: ITEM #49 SECTION VIEW

MAGIKITCH'N MKG-C-60 GRIDDLE FLUE ADAPTER MOUNTING INSTRUCTIONS



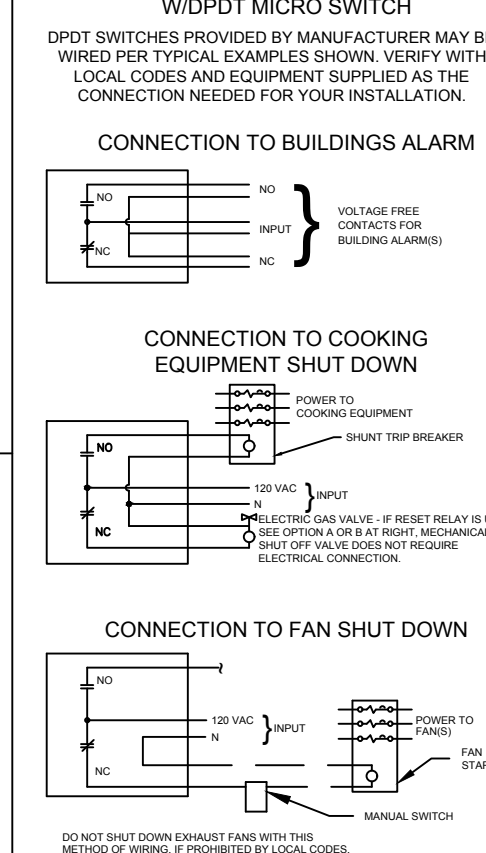
ANSUL R102 (WET CHEMICAL) FIRE PROTECTION SYSTEM - MODEL FSSC



NOT TO SCALE

NOTES:
Wet chemical fire protection system to be Ansul R-102, designed in compliance with UL 300 requirements.
-Verification of all cooking equipment make, model and location required for all fire protection systems.
All fire system piping is standard to the right end of the hood unless a wall is located on the right end.
-Ansul Automan Release to be located within 60" of hood.
The basic fire system will include the following:
-Gas shut-off valve, if required, to be supplied by Manufacturer (up to 2" diameter as standard), and installed by a licensed plumber.
-Micro switch to be supplied by Manufacturer for connection to, but not limited to, building alarm system(s), exhaust and supply fans and electrical power shut down. Field wiring and connections to be performed by a licensed electrician.
The basic fire system does NOT include the following:
-Full dump test other than what is specified per the installation manual, or to satisfy a state or local code. Permit and testing fees are not included unless noted under the equipment schedule for the fire system.
-More than two trips to the jobsite or special transportation, or overnight lodging requirements in remote areas. Normal travel distance is first 50 mi. (80.5 km) from office.
-Special classes or additional labor for access to security sensitive areas.
-Installation of gas shut-off valve.
-Special drawings required to satisfy state or local code. Plan examination fees, PE or FS Approval Stamp.
-Union labor, Government labor, or Prevailing wages required for final field hook-up.
-Any and all electrical components/connections required to shut down fans, shut off device for electric cooking equipment (shut trip breaker), or activate an alarm system, etc.
-Any dismantling or reassembly required to gain access to the fire suppression piping located on the top of the hood.
-Rough-in hidden conduit for remote pull station or gas valve (flush mounted pull station).
-Installation of more than (1) remote pull stations or distances greater than 20 ft (6.1m).
-Parts or labor required to correct piping due to cooking equipment changes or deviation from plans. OR Any charges for missing or additional parts other than those indicated on the Fire Suppression Detail.

WIRING DIAGRAMS WIDPDT MICRO SWITCH



CONNECTION TO BUILDINGS ALARM

CONNECTION TO COOKING EQUIPMENT SHUT DOWN

CONNECTION TO FAN SHUT DOWN

NOTES:
1. DENOTES FIELD INSTALLATION.
2. DENOTES FACTORY INSTALLATION.
3. DO NOT USE BLACK WIRE ON SHARP ACTION SWITCH IN NORMAL INSTALLATION. BLACK WIRE TO BE USED ONLY FOR EXTENSIVE ALARM, LIGHT CIRCUITS, ETC.



Thank you for your interest in Accurex

SUBMITTAL

Please return one approved print to your Greenheck Representative including signature, date, and answers to all submittal "verify" notes and questions. Fabrication will not begin until after approved drawings are received.

APPROVED AS SUBMITTED
 APPROVED AS NOTED
 REJECTED - REVISE AND RESUBMIT

SIGNATURE _____ DATE _____

REV DESCRIPTION DATE

ACCUREX

TITLE: CULVER'S MASTER TEMPLATE

DATE: 1/24

NO. C28805A

EQUIPMENT SCHEDULE												
TYPE 1 KITCHEN HOOD					MARK: ITEM#49							
HOOD NO.	ACCUREX MODEL STYLE / CONFIGURATION	HOOD DIMENSIONS			GREASE CUP OR DRAIN	HOOD TEMP. RATING	TOTAL WEIGHT	SECTION	LOCATION	MARK: ITEM#49		
		SECTION LENGTH	WIDTH	HEIGHT								
1	XGEP-64-S SINGLE WALL EXHAUST ONLY LOW PROXIMITY	64 IN.	TOP 23 IN. FRONT 12 IN. BOTTOM 8 IN. BACK 36 IN.	12	RIGHT	136.0 LBS.	136.0	DEG F	SINGLE			
ILLUMINATION DETAILS												
HOOD NO.	FIXTURE TYPE BULB / LAMP INFO	QTY	INTENSITY FT CANDLES	TYPE / MODEL MATERIAL	QTY	LENGTH	HEIGHT	GREASE FILTRATION DETAILS				
								TYPE / MODEL MATERIAL	QTY	LENGTH	HEIGHT	
1	NONE	NA	0 / 0 IN. OC	GREASE GRABBER	4	18 IN.	16 IN.					
EXHAUST PLENUM COLLARS												
HOOD SECTION #	COLLAR #	DISTANCE TO END (IN.)	WIDTH (IN.)	LENGTH (IN.)	DIAMETER (IN.)	VOLUME (CFM)	S.P. (IN. WC)	VELOCITY (FT/MIN)				
1 / 1		32	12	12	NA	1500	1.918	1500				
TOTAL EXHAUST CFM - SECTION 1						1500		= 281 CFM / FT				
OPTIONS AND ACCESSORIES												
430 STAINLESS STEEL WHERE EXPOSED UL 710 LISTED W/OUT EXHAUST FIRE DAMPER - UL #R25625 BACK NON-INTERGRAL AIR SPACE - 3 IN WIDE 26 IN HIGH CEILING ENCLOSURES - FRONT LEFT RIGHT - FIELD INSTALLED FACTORY MOUNTED EXHAUST COLLAR(S) THIS HOOD IS PART OF A TEMPERATURE INTERLOCK CONTROL SYSTEM INCLUDES PERFORMANCE ENHANCING LIP (PEL) TECHNOLOGY STANDING SEAM CONSTRUCTION FOR SUPERIOR STRENGTH EMBOSSED STAINLESS STEEL FINISH FOR HIGH CORROSION RESISTANCE EQUIPMENT SPECIFIC S/S FLUE ADAPTER												
SPECIAL DESIGN REQUESTS												
SDR #K1100145 - FLUE BYPASS HOOD												
FIRE SUPPRESSION SYSTEM MARK: FS FOR GRILL HOOD												
MANUFACTURER / MODEL	SUPPRESSANT TYPE	FLOW POINTS	SUPPLY LINE	DETECTION	MOUNTING							
ANSUL R-102	WET CHEMICAL	6 UTILIZED 11 AVAILABLE	CONTINUOUS	FUSIBLE LINK	RIGHT END REMOTE MOUNTED							
FULL INSTALLATION (INCLUDES PRE-PIPED HOODS) WITH DETECTION AND FACTORY COORDINATED INSTALL. CHROME SLEEVES FOR FACTORY PROVIDED APPLIANCES DROPS - INCLUDED SUPPRESSION AGENT - INCLUDED - 3 GAL. - (1) 3 TANK(S) GAS VALVE - INCLUDED - MECHANICAL SHUTOFF VALVE, SUPPLIED UP TO 2" REMOTE PULL STATION - STANDARD - INSTALLATION AT SINGLE POINT OF EGRESS METAL BLOW-OFF CAPS - INCLUDED FIRE SYSTEM PERMIT - REQUIRED - FEE INCLUDED 360°F. FUSIBLE LINK OR AS TESTED AND INSTALLED BY LOCAL INSTALLER PER UL MANUAL FIRE SYSTEM PROTECTED HOOD(S) (UL-300) (MARK NAME) (SECTION)												
GRILL HOOD SECTION 1 - (LENGTH 64.0 IN.) - LOW PROXIMITY HOOD - GREASE GRABBER FILTRATION SYSTEM												
Belt Drive Upblast Centrifugal Roof Exhaust Fan MARK: PRV-2												
Qty	Accurex Model	Volume (CFM)	SP (in wg)	FRPM	Operating Power (Hp)	Weight (Lb.)	Size (tp)	V/CP	Endt	Motor RPM	Windings	FLA
1	XRUB-160XP-15	1500	2.337	2,411	1.29	171	1.5	208/60/3	OP	1725	1	6.6
OPTIONS AND ACCESSORIES												
UL/CUL 782 Listed - "Power Ventilators for Rest. Exh. Appliances" Switch, NEMA-1, (PN#N15NO-3-30) Toggle, Shipped with unit Larger curb cap size - 26" Square Roof curb-Galv., GFF-26-G28, Under sized 1.5" Total Hinged Base (Attached) High Temp Curb Seal Rated for Continuous duty at 2000F (Attached) Clean-out Port Grease Trap with Drain Connection (PN 475538) Heat Baffle (Attached) Bearings with Grease Fittings, L10 life of 100,000 hrs (L50 avg. life 500,000 hrs)												

© 2021

CULVERS OF HARTFORD
1285 East Summer Street
Hartford, WI 53071
County of WASHINGTON

Accurex
Culver Franchising System, Inc.
1240 Water Street
Prairie du Sac, WI 53578
608-643-7880

OWNER:
S7 L PROPERTIES HARTFORD, LLC
2651 Kinking Court
Portage, WI 53901
Jeff Legel
608-742-2883

OLLMANN ERNEST MARTIN ARCHITECTS
200 South State Street
Belleville, Illinois 61008
815-544-7790 Phone

© OEMA
All rights reserved; any copying, transmittal or disclosure subject to OEMA written approval.

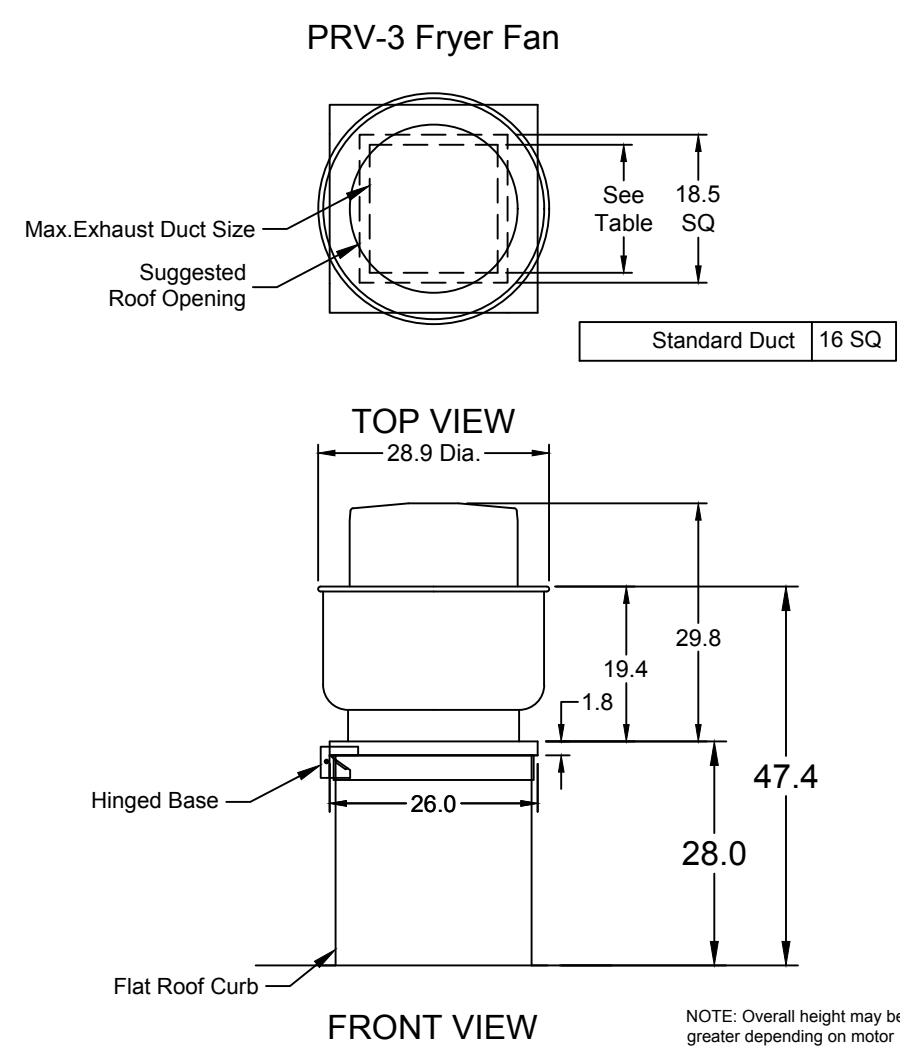
GRIDDLE HOOD/EXHAUST SCHEDULE & DETAILS

Date: 11-19-2021

Revision:

2021-127

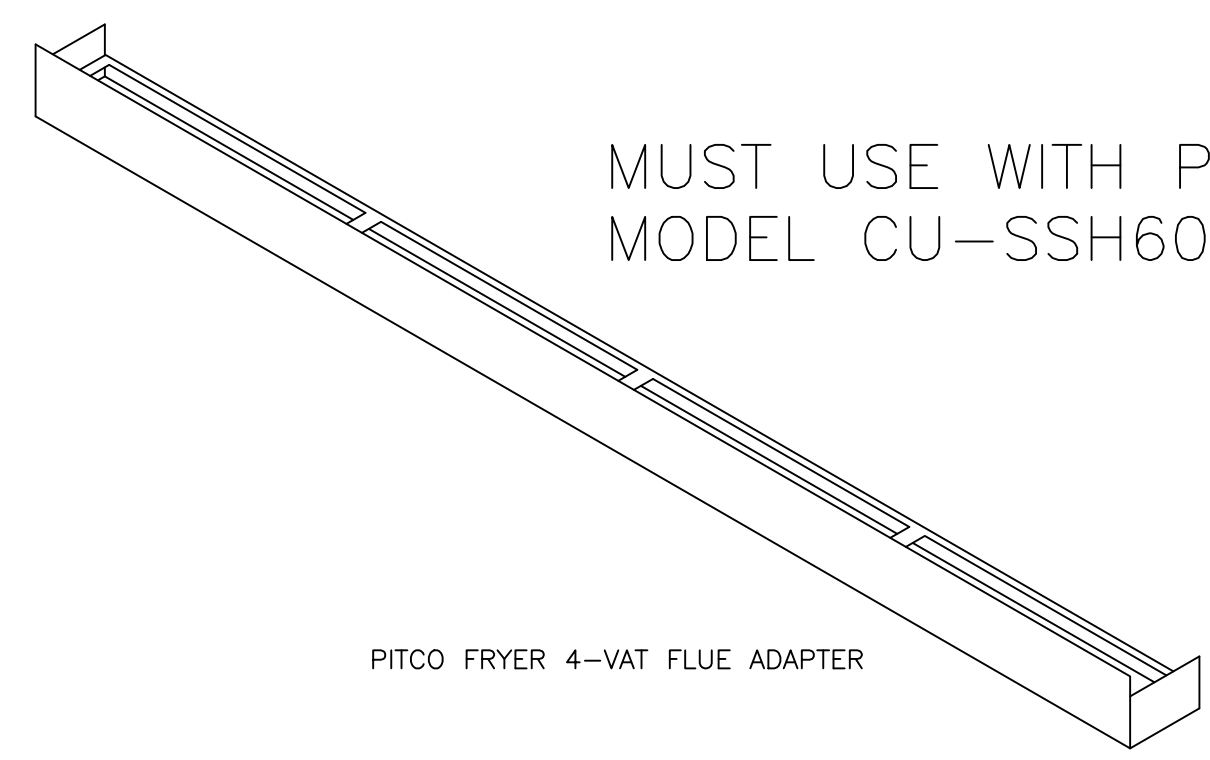
M202



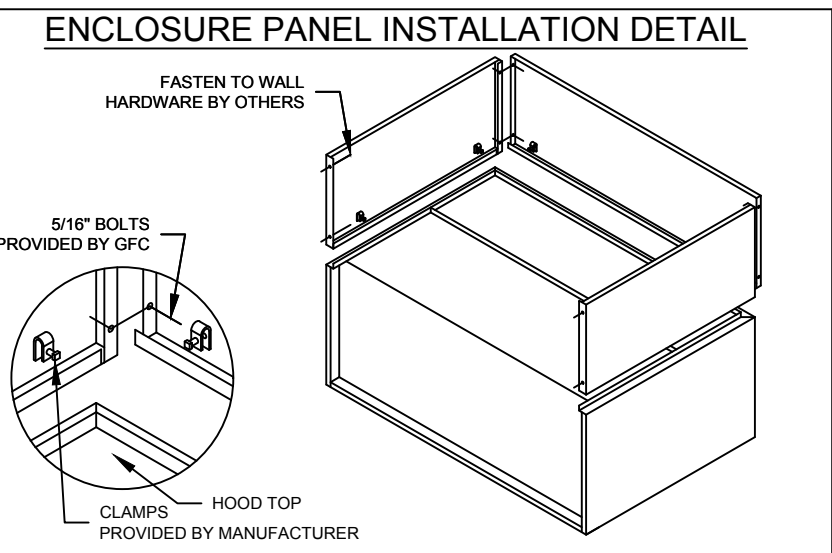
FOOD SERVICE EQUIPMENT #59

4-VAT FRYER BATTERY

MUST USE WITH PITCO MODEL CU-SSH60W

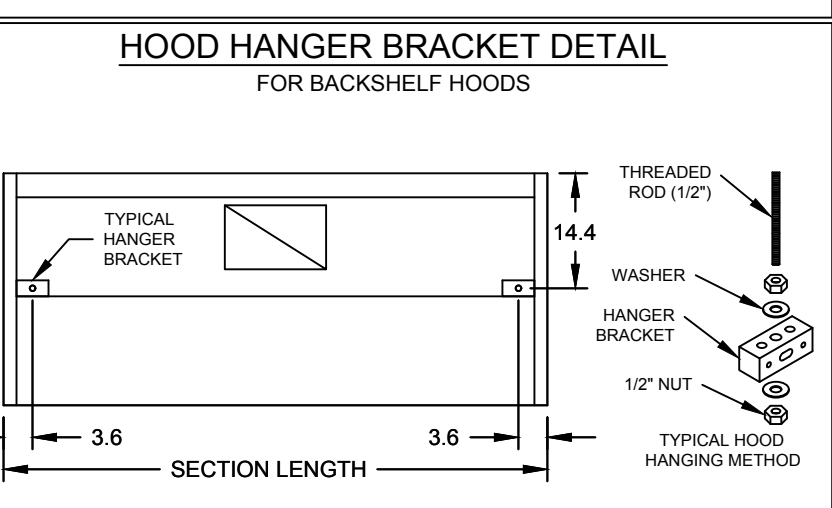


PITCO FRYER 4-VAT FLUE ADAPTER



HOOD HANGING HEIGHT FOR FIRE SYSTEMS
VERIFICATION OF HOOD HANGING HEIGHT ABOVE FINISHED FLOOR (A.F.F.) IS REQUIRED FOR CORRECT PLACEMENT OF FIRE SYSTEM NOZZLES.

- RECOMMENDED HANGING HEIGHT = 60" FROM FINISHED FLOOR TO LOWER FRONT EDGE OF HOOD.
- OTHER HANGING HEIGHT = _____ FROM FINISHED FLOOR TO LOWER EDGE OF HOOD.



GENERAL DRAWING NOTES

Verify building entry conditions or limitations for equipment access to space.

Verify type and height of finished ceiling and if hood(s) may extend above finished ceiling (if required).

Seismic installation and bracing of equipment is by others.

Greenheck will not accept liability for problems that result from sub-standard installation, including field electrical wiring that deviate from supplied diagrams, jobsite conditions (ductwork, fuel types and structural conditions) that GFC has not been notified of at the time of ordering, or use of this equipment other than that for which it is designed.

It is the responsibility of the purchaser to hire qualified personnel for installation and start-up of all equipment. Installation and start-up information is shipped with all equipment via the Installation, Operation and Maintenance Manual (IOM), also included is a troubleshooting guide. Have all start-up info available prior to any warranty claims and/or factory technical support.

VENTILATION SYSTEM NOTES

Greenheck ventilators are designed in compliance with all national codes: NFPA 96, national electric code, BOCA, uniform mechanical code, international mechanical code, and southern building conference. See national evaluation report #430 for allowable values, and/or conditions of use concerning material presented in this document. Local codes may vary. It is the responsibility of the purchaser to submit drawings to local authorities.

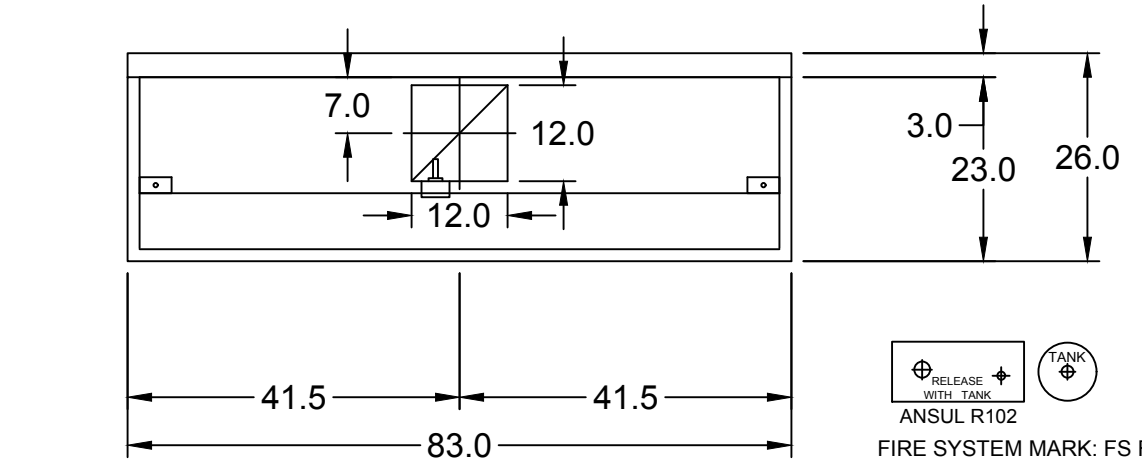
Exhaust and supply air volumes are to be maintained within -5% to +10% tolerance of values indicated. Static pressure(s) indicated are for the ventilator at the duct connection(s) only.

The grease filter face velocities are based on the filter manufacturers recommendations for maximum grease extraction. Inlet opening air velocities for waterwash, dry cartridge and high velocity cartridge filters manufactured by Greenheck are designed to deliver maximum grease extraction.

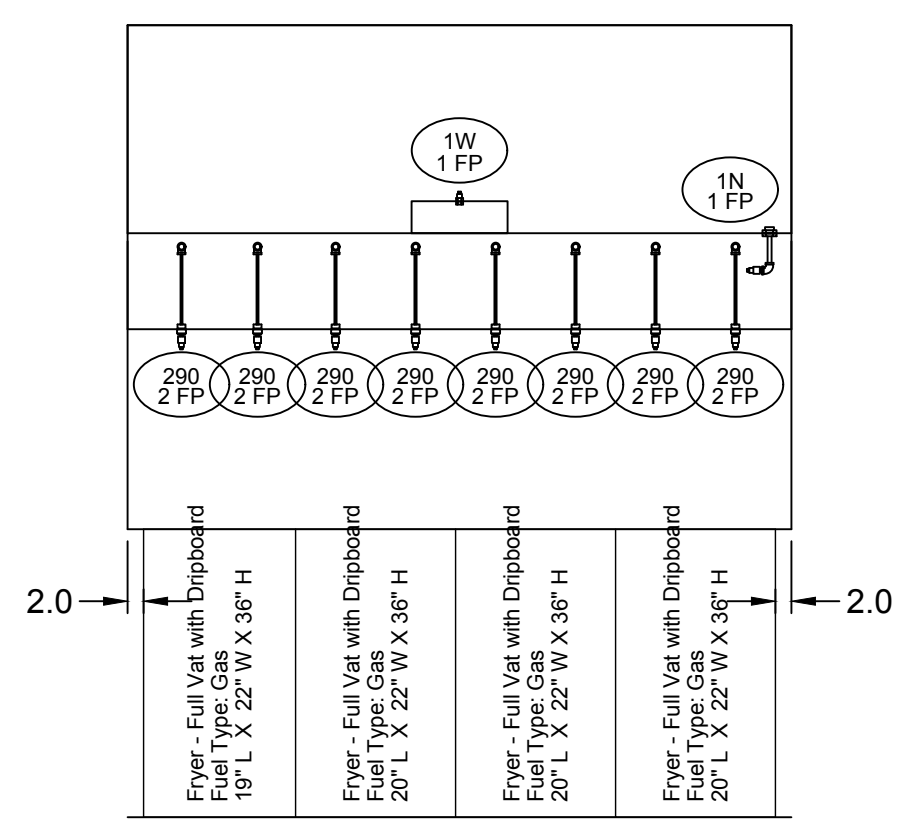
Hoods installation (by others unless otherwise noted) shall be in accordance with NFPA # 96 and applicable building codes.

PROPRIETARY INFORMATION NOTICE

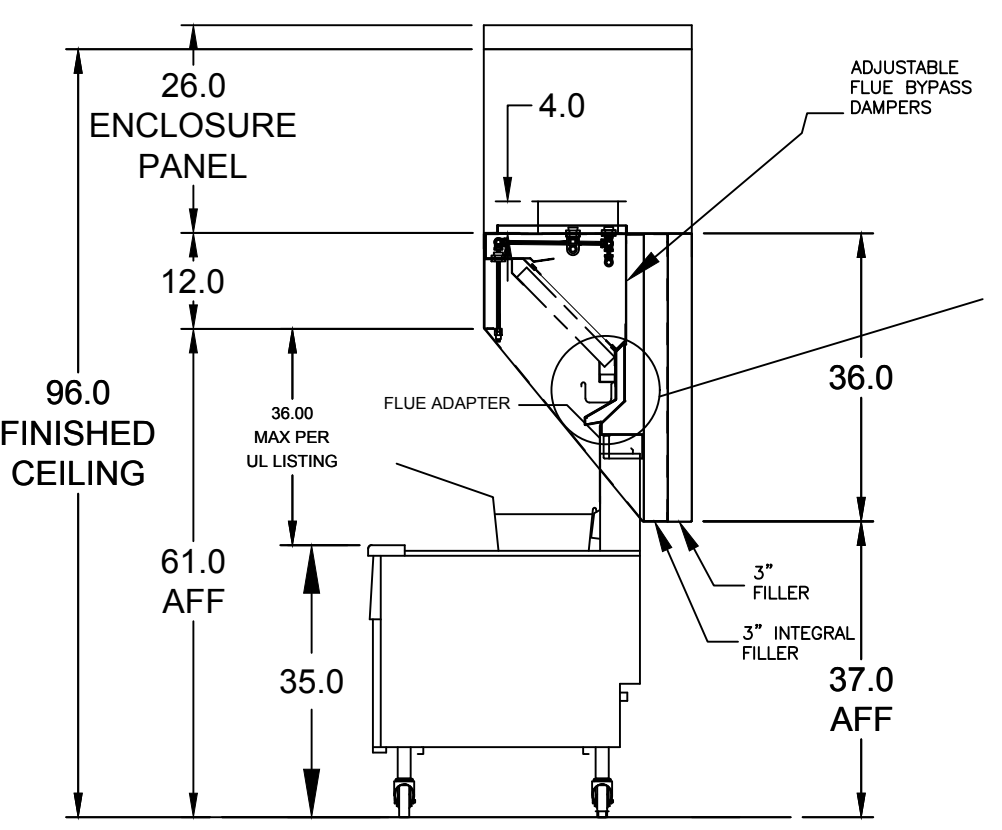
This document is and contains confidential trade secret information of the company and remains property of the company and is to be returned upon request. Neither this information nor its contents may be reproduced or disclosed to persons not having a need-to-know consistent with the purpose of the loan document without written permission.



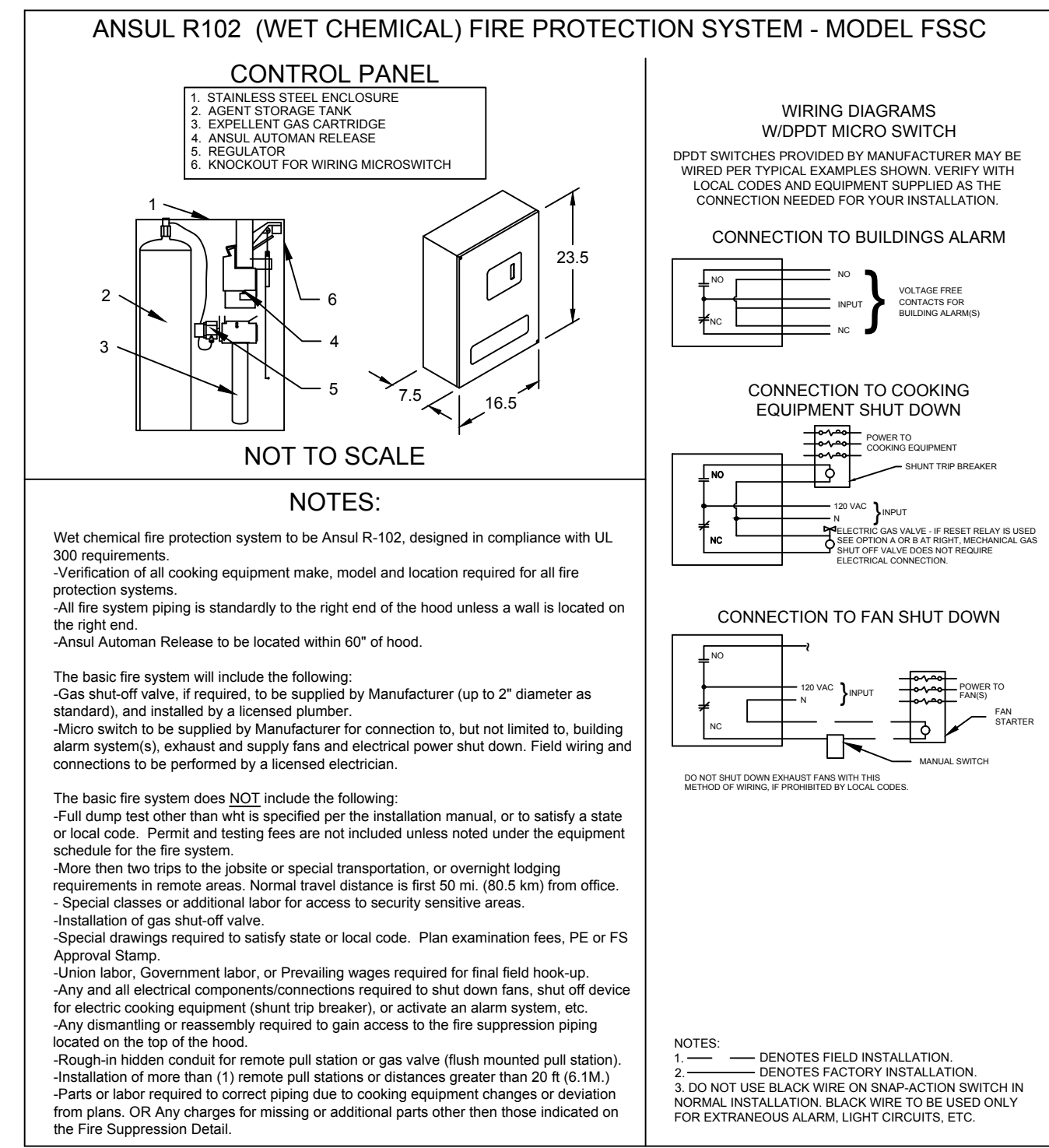
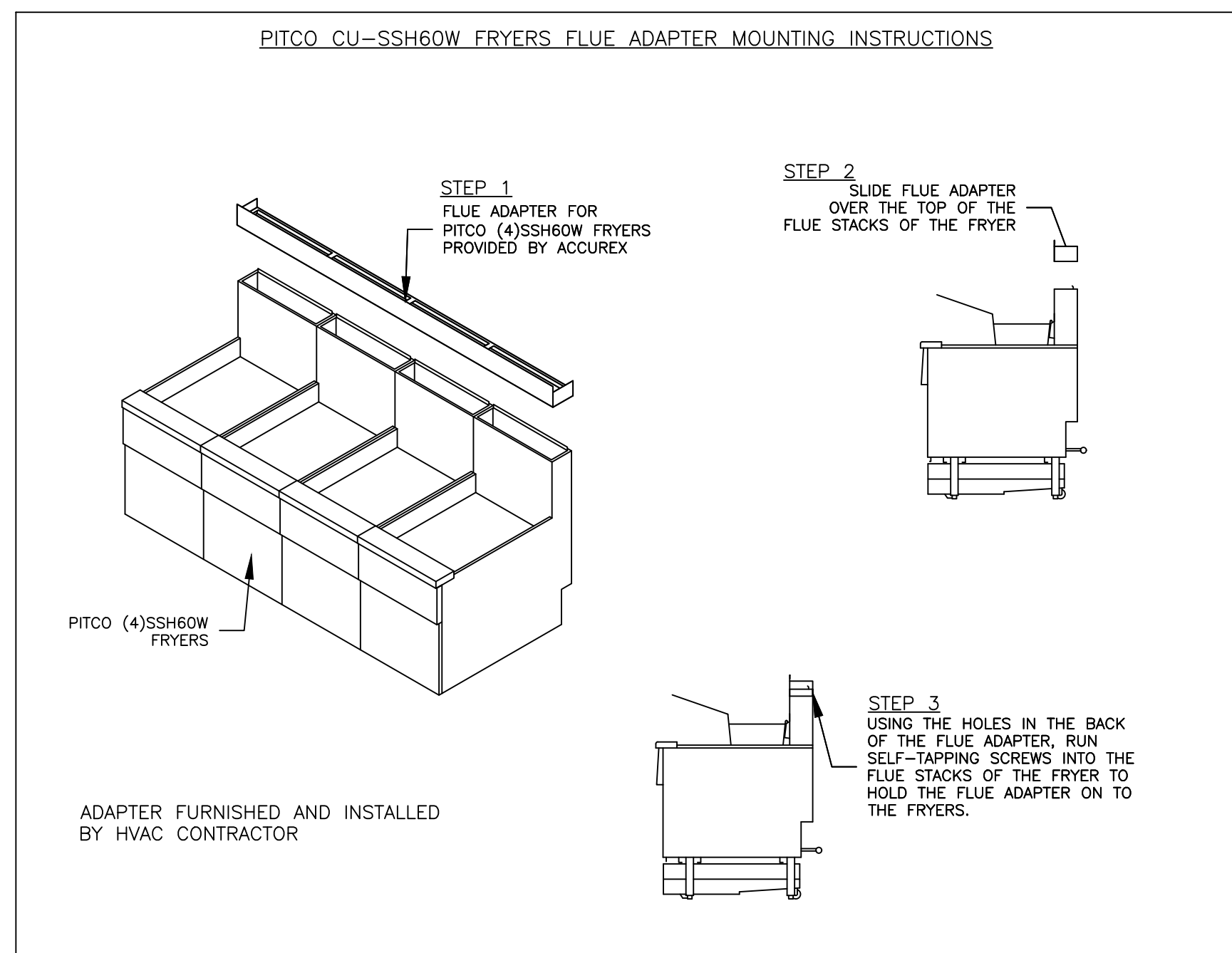
MARK: ITEM #59 PLAN VIEW



MARK: ITEM #59 ELEVATION VIEW



MARK: ITEM #59 SECTION VIEW



Thank you for your interest in Accurex

SUBMITTAL

Please return one approved print to your Greenheck Representative including signature, date, and answers to all submittal "verify" notes and questions. Fabrication will not begin until after approved drawings are received.

APPROVED AS SUBMITTED
 APPROVED AS NOTED
 REJECTED - REVISE AND RESUBMIT

SIGNATURE _____ DATE _____

EQUIPMENT SCHEDULE												
TYPE 1 KITCHEN HOOD				HOOD DIMENSIONS			MARK: ITEM #59					
HOOD NO.	ACCUREX MODEL STYLE / CONFIGURATION	SECTION LENGTH	WIDTH	HEIGHT	GREASE CUP OR GRAB	HOOD TEMP. RATING	TOTAL WEIGHT	SECTION LOCATION				
1	XXEP-83-S SINGLE WALL EXHAUST ONLY LOW PROXIMITY	83 IN.	TOP 23 IN. FRONT 12 IN. (BOT 3 IN. BACK 36 IN.)	RIGHT	600 DEG F	169.0 LBS.	SINGLE					
ILLUMINATION DETAILS												
HOOD NO.	FIXTURE TYPE	QTY	INTENSITY FT CANDLES	TYPE / MODEL MATERIAL	QTY	LENGTH	HEIGHT					
1	NONE	NA	0 / 0 IN. OC	X-TRACTOR STAINLESS STEEL	5	16 IN.	16 IN.					
EXHAUST PLENUM COLLARS												
HOOD SECTION #	COLLAR #	DISTANCE TO END (IN.)	WIDTH (IN.)	LENGTH (IN.)	DIAMETER (IN.)	VOLUME (CFM)	S.P. (IN. WC)	VELOCITY (FT/MIN)				
1/1		41.5	12	12	NA	1500	0.518	1500				
TOTAL EXHAUST CFM - SECTION 1						1500	= 217 CFM / FT					
OPTIONS AND ACCESSORIES												
430 STAINLESS STEEL WHERE EXPOSED UL 710 LISTED W/ OUT EXHAUST FIRE DAMPER - UL #R25625 BACK NON-INTEGRAL AIR SPACE - 3 IN. WIDE 28 IN. HIGH CEILING ENCLOSURES - FRONT LEFT RIGHT - FIELD INSTALLED FACTORY MOUNTED EXHAUST COLLAR(S) THIS HOOD IS PART OF A TEMPERATURE INTERLOCK CONTROL SYSTEM INCLUDES PERFORMANCE ENHANCING LIP (PEL) TECHNOLOGY STANDING SEAM CONSTRUCTION FOR SUPERIOR STRENGTH EMBOSSED STAINLESS STEEL FINISH FOR HIGH CORROSION RESISTANCE EQUIPMENT SPECIFIC S/S FLUE ADAPTER												
SPECIAL DESIGN REQUESTS												
SDR #K1100559 - NEW 4L FRYER SYSTEM												
FIRE SUPPRESSION SYSTEM MARK: FS FOR FRYER HOOD												
MANUFACTURER / MODEL	FLOW POINTS	SUPPLY LINE	DETECTION	MOUNTING								
ANSUL R-102 WET CHEMICAL	18 UTILIZED 22 AVAILABLE	CONTINUOUS	FUSIBLE LINK	RIGHT END REMOTE MOUNTED								
FULL INSTALLATION (INCLUDES PRE-PIPED HOOD(S) WITH DETECTION AND FACTORY COORDINATED INSTALL) CHROME SLEEVES FOR FACTORY PROVIDED APPLIANCES DROPS - INCLUDED SUPPRESSION AGENT - INCLUDED - 6 GAL. - (2) 3.0 TANK(S) GAS VALVE - INCLUDED - MECHANICAL SHUTOFF VALVE, SUPPLIED UP TO 2" REMOTE PULL STATION - STANDARD - INSTALLATION AT SINGLE POINT OF EGRESS METAL BLOW-OFF CAPS - INCLUDED FIRE SYSTEM PERMIT - REQUIRED - FEE INCLUDED 500°F. FUSIBLE LINK OR AS TESTED AND INSTALLED BY LOCAL INSTALLER PER UL MANUAL												
FIRE SYSTEM PROTECTED HOOD(S) (UL-300) (MARK NAME / SECTION)												
FRYER HOOD SECTION 1 - (LENGTH 83.0 IN.) - LOW PROXIMITY HOOD												
EQUIPMENT SCHEDULE												
Belt Drive Upblast Centrifugal Roof Exhaust Fan MARK: PRV-3												
Qty	Accurex Model	Volume (CFM)	SP (in wg)	FRPM	Operating Power (hp)	Weight (Lb.)	Size (hp)	V/C/P	End. Motor RPM	Windings	FLA	
1	XRUB-140-7	1500	1	1377	0.5	160	0.75	208/60/3	OP	1725	1	3.5
OPTIONS AND ACCESSORIES												
UL/CUL 762 Listed - "Power Ventilators for Rest. Exh. Appliances" Switch, NEMA-1, Toggle, Shipped with unit Larger curb cap size - 20" square Roof curb-Gal., GFC-28-028, Undersized 1.5" total Hinged Base (Attached) Curb Seal (Attached) Clean-out Port Grease Trap with Drain Connection (PN 475538) Heat Baffle (Attached)												

CULVERS OF HARTFORD
1285 East Summer Street
Hartford, WI 53027
County of WASHINGTON

Culver Franchising System, Inc.
 1240 Water Street
 Prairie du Sac, WI 53578
 608-642-7880

OWNER:
OLLMANN ERNEST MARTIN ARCHITECTS
 200 South State Street
 Belleville, Illinois 61008
 815-544-7790 Phone

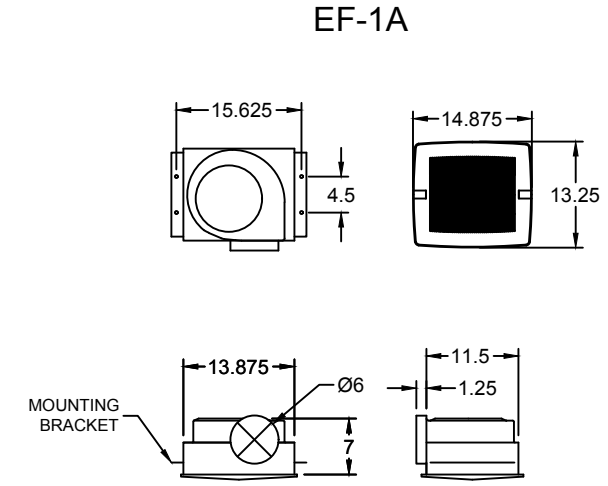
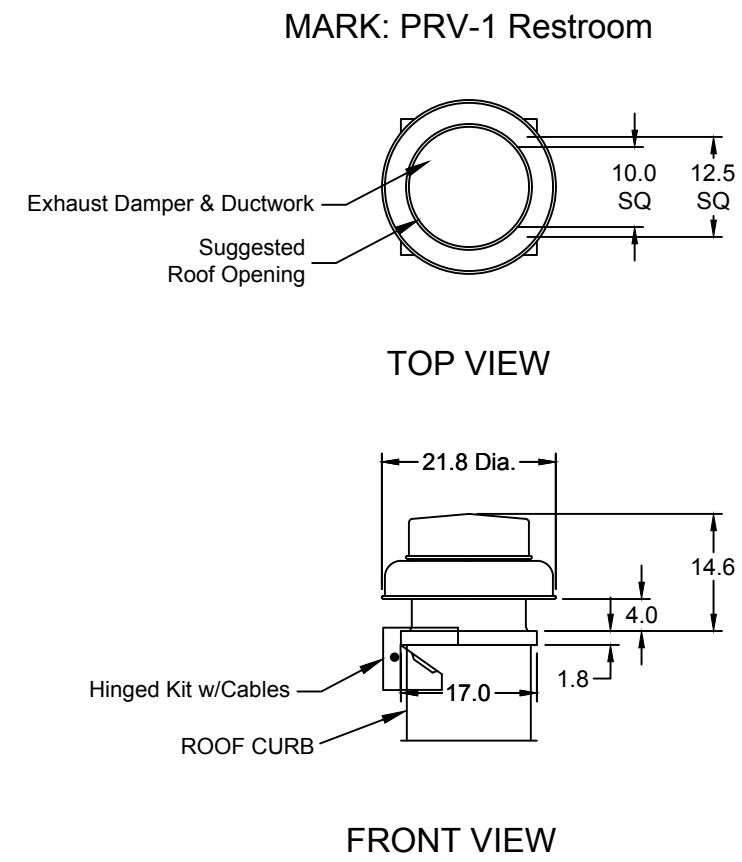
© OEMA
 All rights reserved; any copying, transmission or disclosure subject to OEMA written approval.

FRYER HOOD/EXHAUST SCHEDULE & DETAILS

Date: 11-19-2021

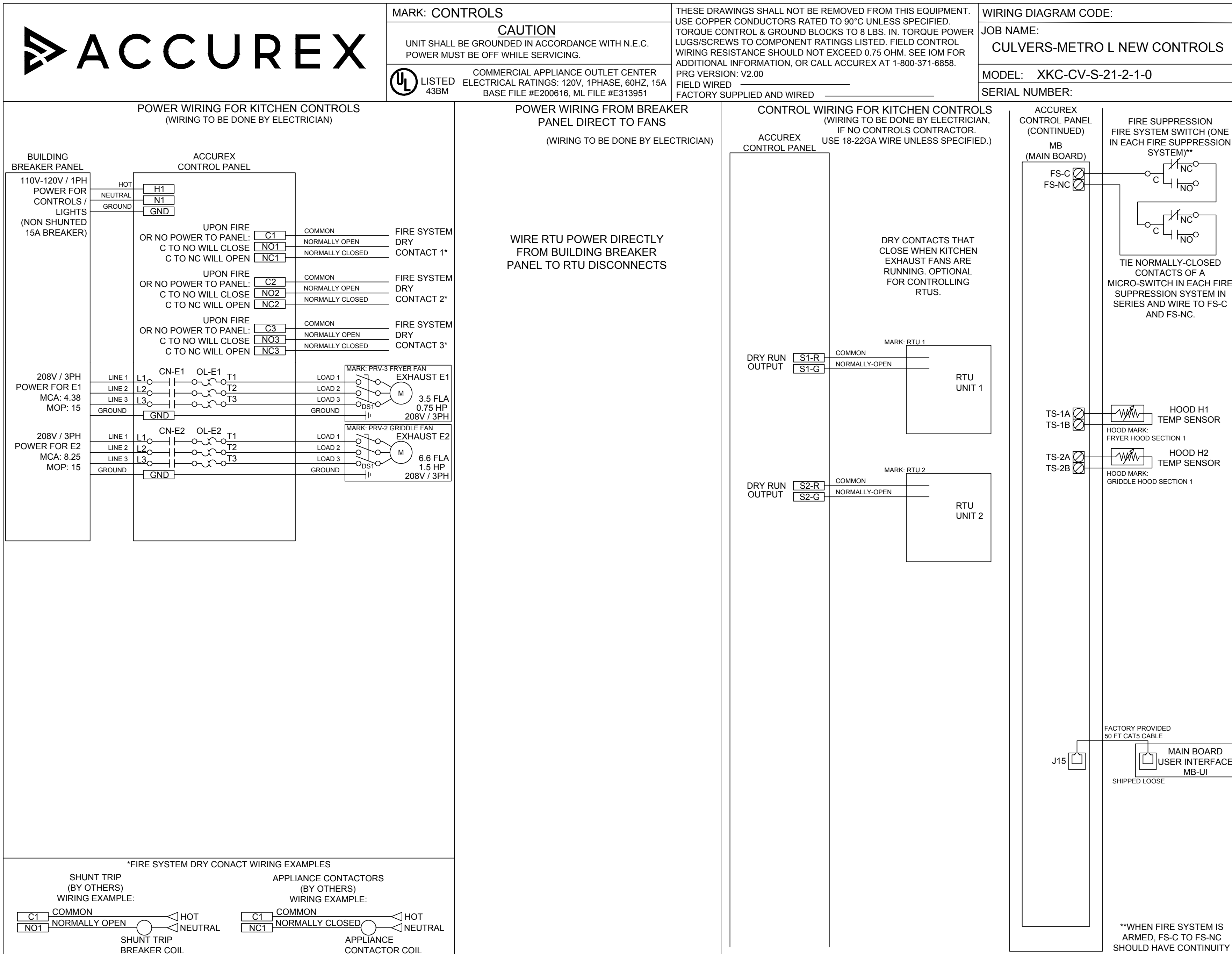
Revision: _____

2021-127



EQUIPMENT SCHEDULE				
ELECTRICAL CONTROL BOX		MARK: KFCC		
DESCRIPTION / ACCUREX MODEL	EXHAUST FAN QTY	SUPPLY FAN QTY	POWER FREQUENCY	
KITCHEN FAN CONTROL CENTER / XFCC SHIP LOOSE / SHIP LOOSE FOR REMOTE MOUNTING	2	0	60 CYCLE	
CONTROL PANEL ENCLOSURE - 16 GA 304 STAINLESS STEEL ENCLOSURE (NEMA-1) - DIMENSIONS 12 X 18 X 6				
WIRING DIAGRAM # T100-2 - 20				
STARTERS PROVIDED IN CONTROL PANEL - QTY 2				
2 POSITION FAN SWITCH - QTY 1				
INTEGRATED EXHAUST TEMPERATURE INTERLOCK SYSTEM				
-FACTORY MOUNTED EXHAUST TEMPERATURE SENSORS - QTY 2				
-COMPLIES WITH INTERNATIONAL MECHANICAL CODE 2006 SECTION 507.2.1.1				
TURN ON EXHAUST IN FIRE				
THERMAL OVERLOADS IN CABINET				
1 SPEED FANS)				
SPECIAL DESIGN REQUESTS				
SDR #K0800240 - USE KIT #652863, WIRING DIAG. #Z2905336				

EQUIPMENT SCHEDULE												
Direct Drive Centrifugal Roof Exhaust Fan						MARK: PRV-1 Restroom						
Qty	Accurex Model	Volume (CFM)	SP (in wg)	FRPM	Operating Power (hp)	Weight (Lb.)	Size (hp)	V/CP	Encl.	Motor RPM	Windings	FLA
1	XRED-095-D	375	0.5	1479	0.060	43	0.0667	115/60/1	OP	1550	1	NA
OPTIONS AND ACCESSORIES												
UL/ULC 705 Listed - "Power Ventilators"												
Switch, NEMA-1, Toggle, Shipped with unit												
Hinged Curb Cap Kit w/Cables (PN 851018) (Shipped Loose)												
Curb Seal (Attached)												
Damper, WD-100-FB-10X10, Gravity Operated (Loose)												
Solid State Speed Control, Mounted and Wired (PN SWSSC)												
Roof Curb-Galv., GPI-17-10-G12, Undersized 1.5" total												



EQUIPMENT SCHEDULE												
Ceiling Exhaust Fan		MARK: EF-1A Exhaust Fan			Motor Information							
Qty	Accurex Model	Volume (CFM)	SP (in wg)	FRPM	Operating Power (hp)	Weight (Lb.)	Size (hp)	V/CP	Encl.	Motor RPM	Windings	FLA
1	XCR-880	75	0.125	885	0.01	10	0.0	115/60/1	OP	900	1	NA
OPTIONS AND ACCESSORIES												
UL/ULC 705 Listed - Electric fan												
Solid State Speed Control, 6.0 amp, mounted and wired												
Round Hooded Wall cap, (PN-WC-6) Shipped loose												
Designer Grille												
Round duct connection												
Polypropylene Wheel Material												
Energy Star Rated												

FOR TECHNICAL SUPPORT ON ACCUREX CONTROLS PLEASE CALL ACCUREX TECHNICAL SUPPORT: 1-800-371-6858

SECONDARY CONTACTS ARE: AARON VAN KREY 715.841.8521 TYLER SCHILLING 715.841.8749



Thank you for your interest in Accurex

SUBMITTAL

Please return one approved print to your Greenheck Representative including signature, date, and answers to all submittal "verify" notes and questions. Fabrication will not begin until after approved drawings are received.

APPROVED AS SUBMITTED
 APPROVED AS NOTED
 REJECTED - REVISE AND RESUBMIT

SIGNATURE _____ DATE _____

REV	DESCRIPTION	DATE

ACCUREX

CULVER'S MASTER TEMPLATE

SCALE: 1/24

CAD DRAWING NO. C28805C

© 2021

CULVERS OF HARTFORD
1285 East Summer Street
Hartford, WI 53027
County of WASHINGTON

OWNER: ST L PROPERTIES HARTFORD, LLC
2651 Kinking Court
Portage, WI 53901
Jeff Legal
608-742-2893

OLLMANN ERNEST MARTIN ARCHITECTS
200 South State Street
Belvidere Illinois 61008
815-544-7790 Phone

FAN SCHEDULE & DETAILS

Revision: _____
Date: 11-19-2021

2021-127

M204