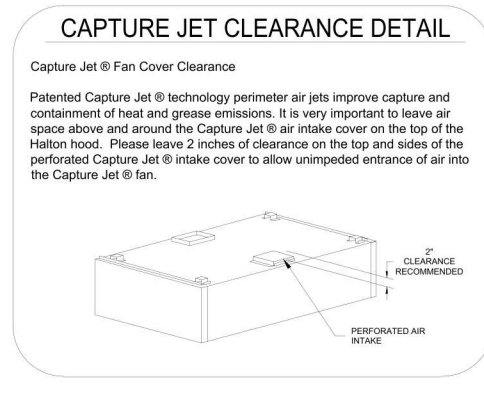
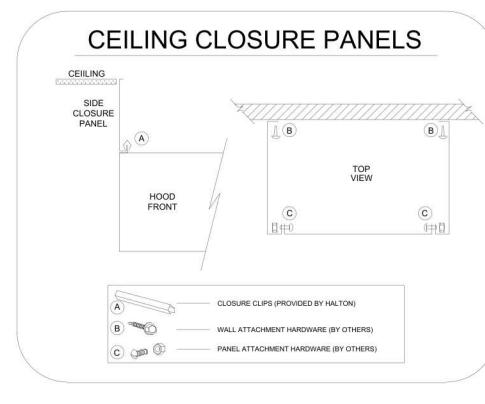


HOOD INFORMATION TABLE																		
HOOD NUMBER	HOOD MODEL	EXHAUST CFM	EXHAUST AIR FLOW REQUIREMENTS			GREASE EXTRACTOR			HOOD CONSTRUCTION	HOOD WEIGHT (LBS)	SUPPLY AIR REQUIREMENTS							
			T.A.B. PORT STATIC PRESSURE	TOTAL HOOD STATIC PRESSURE	EXHAUST COLLAR	QTY.	SIZE	TYPE			SUPPLY CFM	SUPPLY STATIC PRESSURE	SUPPLY COLLAR					
					QTY.	L	H				QTY.	LENGTH	WIDTH					
1-1	KVC	1714	0.39"	0.50"	1	12"	12"	4	20"	13"	KSA	ALL 18 GA. 304 S.S.	655	1187	25"	1	24"	6"
1-2	KVC	733	0.07"	0.17"	1	8"	8"	4	20"	13"	KSA	ALL 18 GA. 304 S.S.	648	513	25"	1	24"	6"
TOTAL EXH. CFM = 2447										TOTAL SUPPLY CFM = 1700								



- ### GENERAL SPECIFICATIONS
- HOOD CONSTRUCTION AND DESIGN MEETS WITH REFR. RE. LOCAL BUILDING CODES.
  - HOOD IS NSF AND ILL LISTED UNDER THE FOLLOWING FILE NUMBER: ILL #1014220491-001
  - ALL INSTALLATION WORK IS TO BE PERFORMED BY QUALIFIED PERSONS AND IN ACCORDANCE WITH STATE AND LOCAL BUILDING CODE REQUIREMENTS.
  - THE INSTALLATION SHALL BE IN ACCORDANCE WITH REFR. RE. REFRIGERATION AND GREASE LADEN VAPORS FROM COMMERCIAL COOKING EQUIPMENT.
  - ALL EXHAUST DUCTWORK AND TRANSITIONS ARE TO BE PROVIDED BY THE HOOD CONTRACTOR.
  - CLEARANCE FROM HOODS AND DUCTS TO COMBUSTIBLE MATERIAL SHALL BE PER APPLICABLE BUILDING CODES.
  - FOR PROPER OPERATION OF THE HOOD SYSTEM, IT IS THE RESPONSIBILITY OF THE GENERAL CONTRACTOR TO HAVE THE HOOD BALANCED AND TESTED TO ENSURE THAT THE EXHAUST AND SUPPLY REQUIREMENTS OF THE HOOD ARE MET.

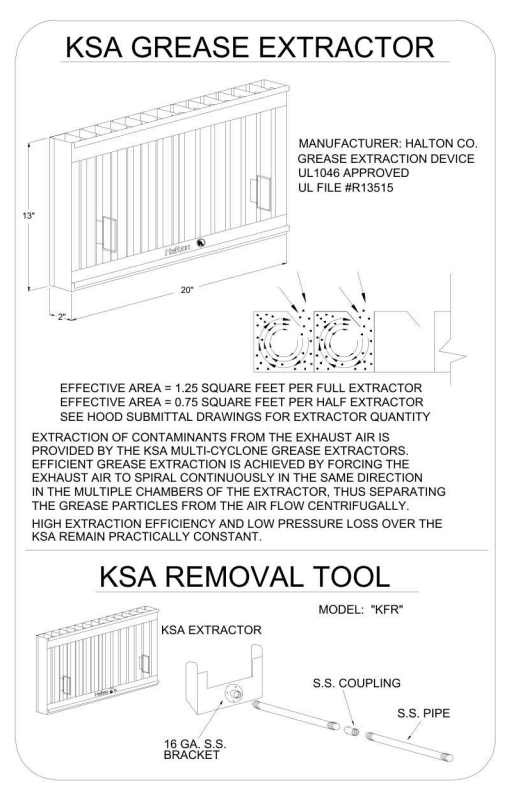
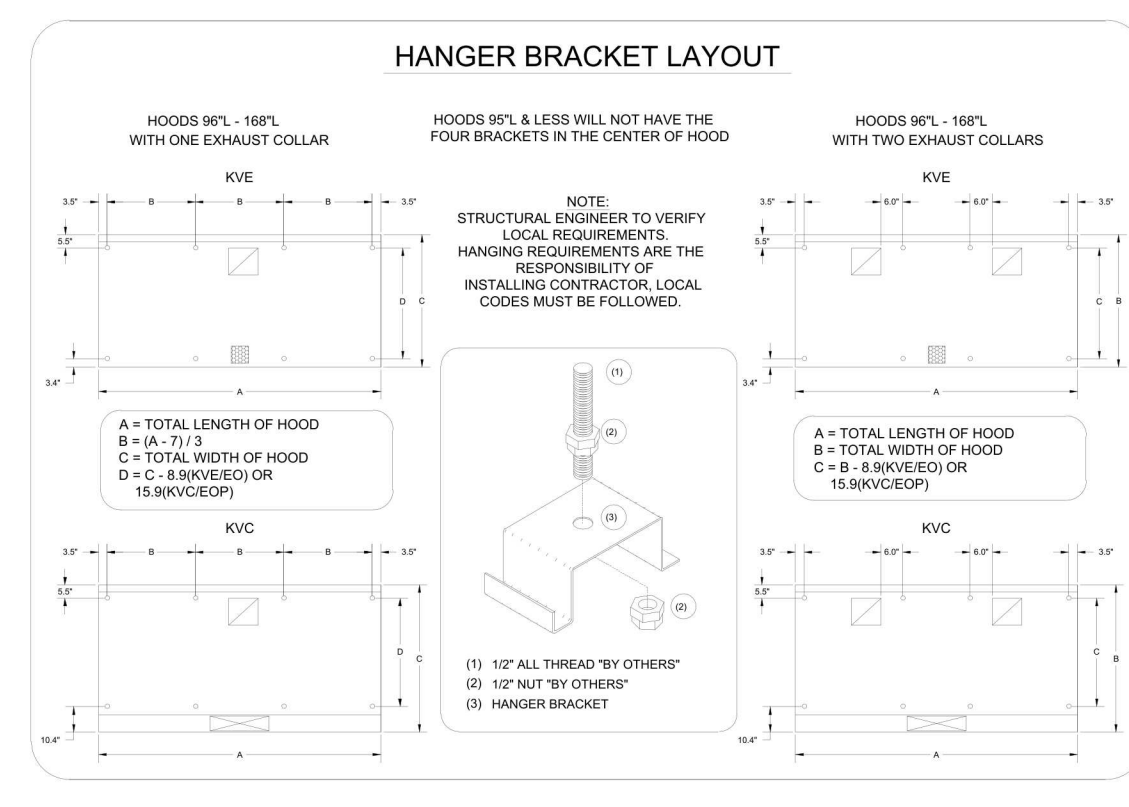
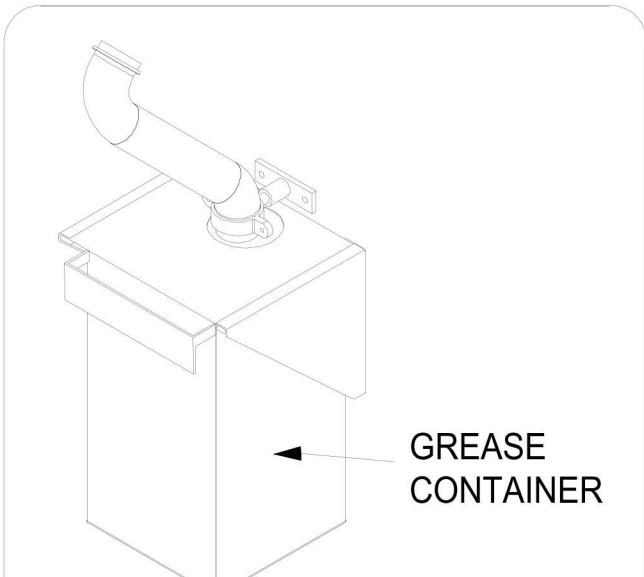
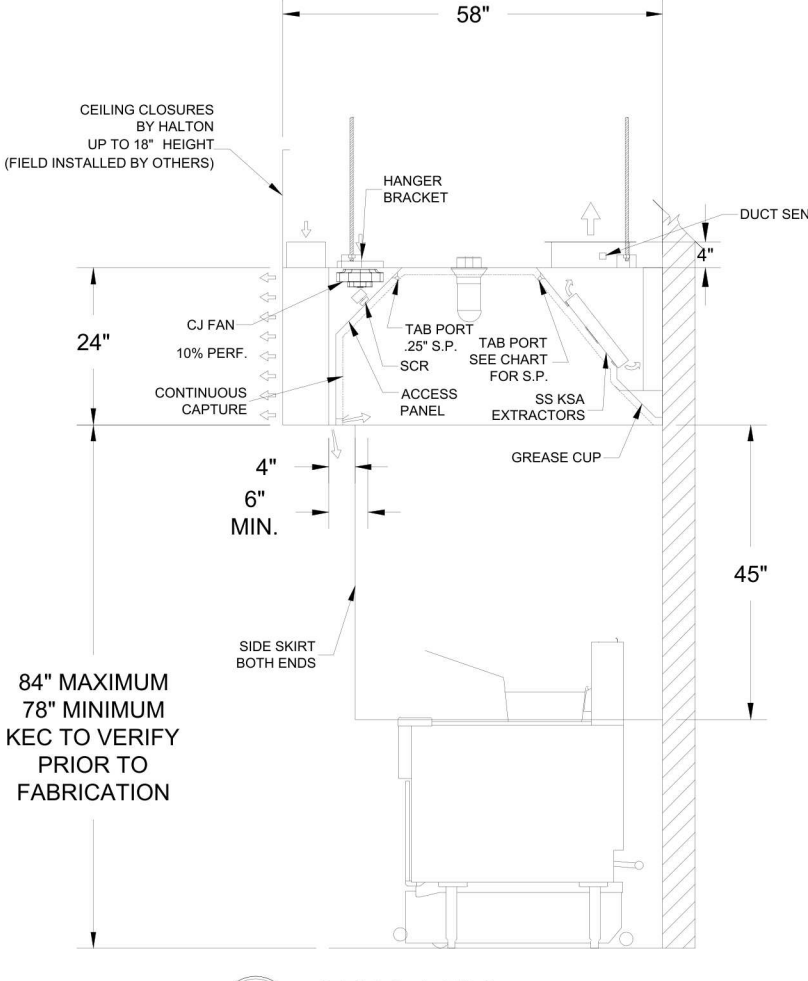
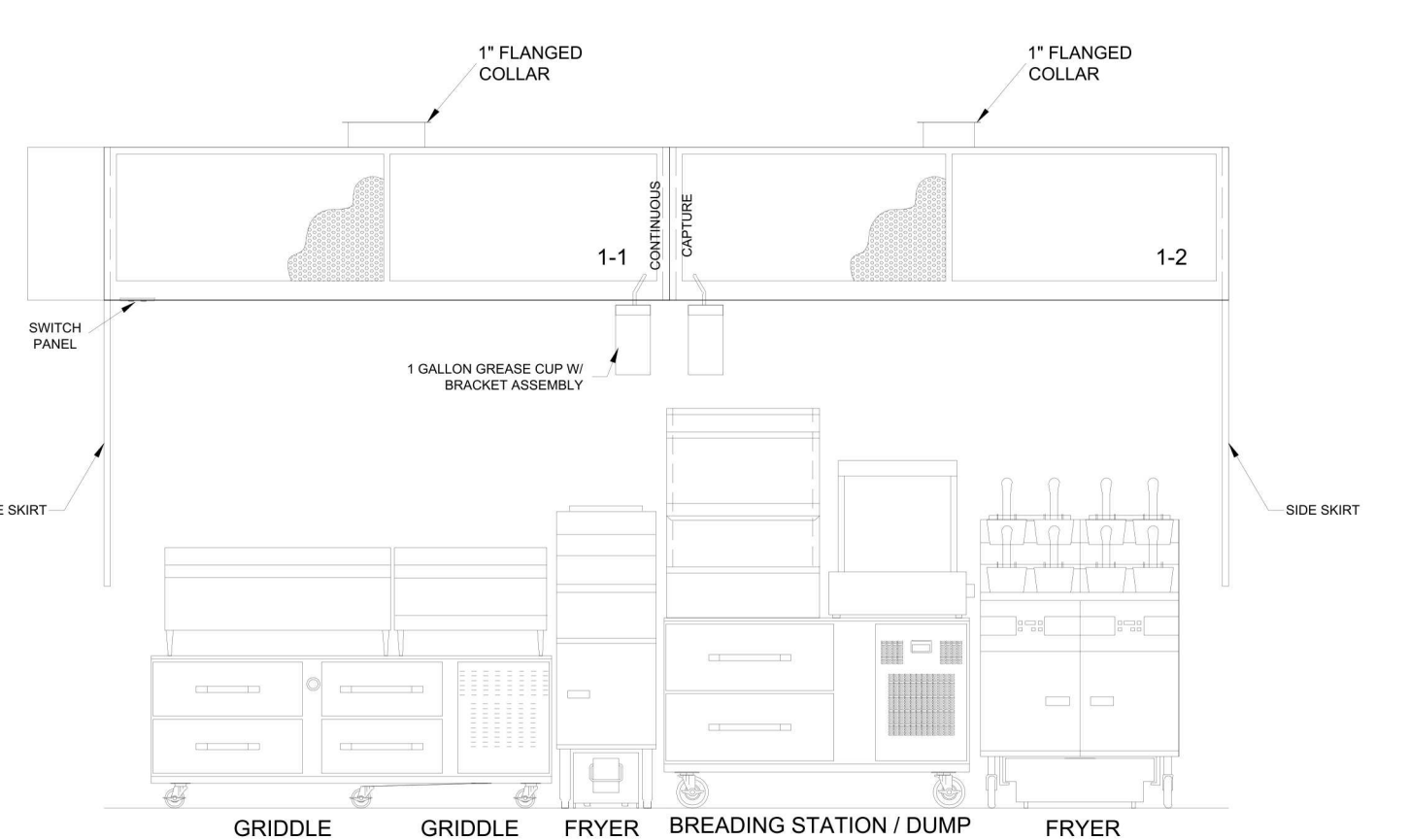
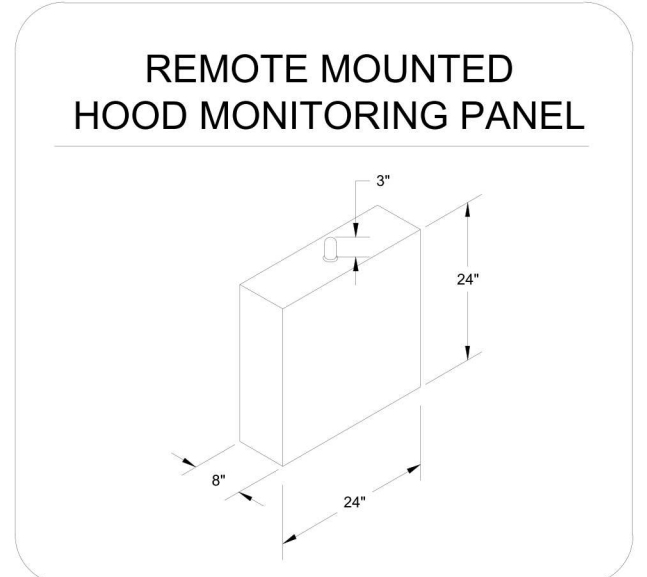
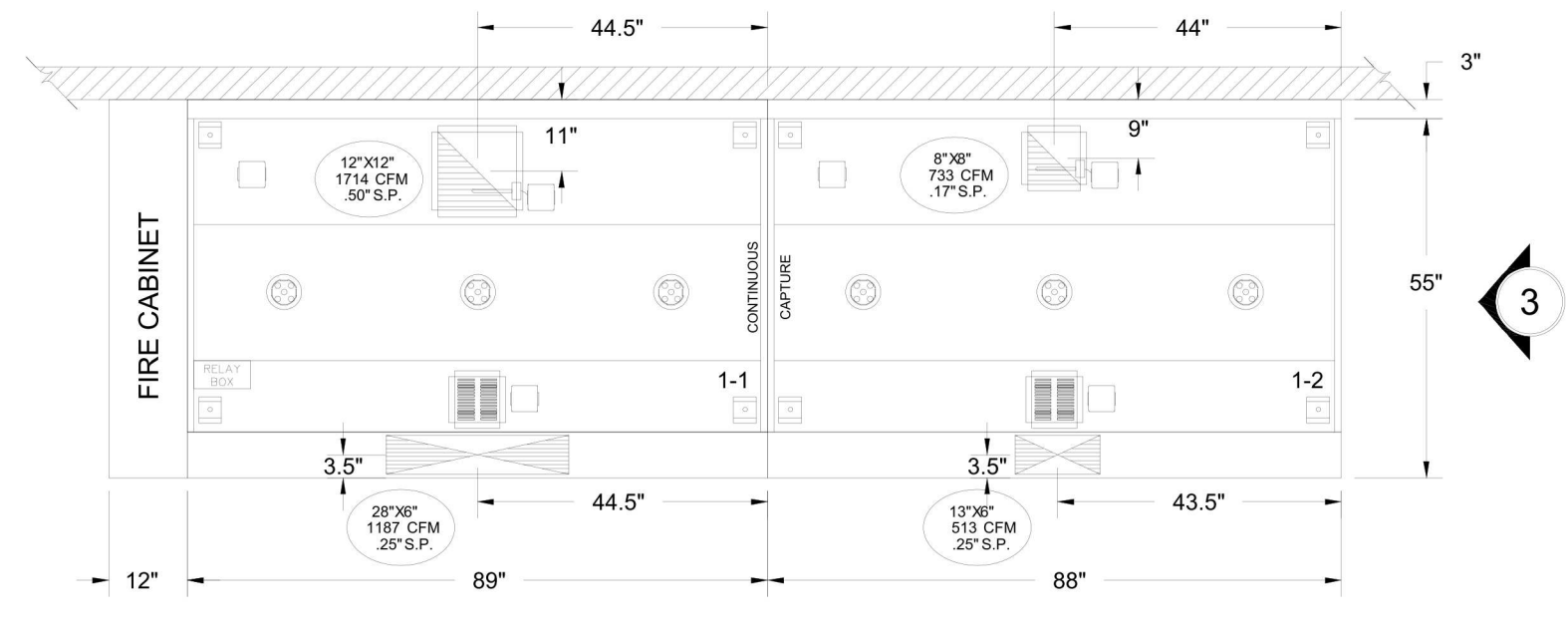
- ### INSTALLATION REQUIREMENTS
- KITCHEN EQUIPMENT CONTRACTOR'S REQUIREMENTS
- PROVIDE DRAWINGS TO APPROPRIATE TRADES REFERENCING UTILITY SERVICE AND COORDINATE FINAL CONNECTION.
  - DELIVER, ASSEMBLE AND INSTALL HALTON SYSTEM PER DRAWING.
  - FINISH WIRING AND PLUMBING DIAGRAMS TO END USER.
  - THE K.E.C. MUST INFORM HALTON OF ANY CHANGES IN EQUIPMENT OR BUILDING STRUCTURE. FIELD MODIFICATIONS ARE THE RESPONSIBILITY OF THE K.E.C.
  - IF HALTON MANUAL EXHAUST VOLUME DAMPERS ARE PROVIDED, THE K.E.C. IS RESPONSIBLE FOR THEIR INSTALLATION OR TO MAKE ARRANGEMENTS WITH OTHER TRADES FOR THEIR INSTALLATION.
  - IF HALTON MODEL SVL BACKSHELF STYLE HOODS ARE PROVIDED, THE K.E.C. IS RESPONSIBLE FOR THE INSTALLATION OF THE CAPTURE JET FAN.
- ELECTRICAL CONTRACTOR'S REQUIREMENTS
- PROVIDE AND CONNECT ALL REQUIRED VOLTAGES, CONNECTORS, WIRING, CONDUIT ETC., PER NEC AND ALL APPLICABLE LOCAL CODES.

- ### ELECTRICAL EQUIPMENT REQUIREMENTS
- FLUORESCENT LIGHT FIXTURE: 40 WATT MAX BULB- 87 AMP EA.
  - RECESSED INCANDESCENT LIGHT FIXTURE: 50 WATT MAX BULB- 1.25 AMP EA.
  - GLOBE INCANDESCENT LIGHT FIXTURE: 70 WATT MAX BULB- 3.0 AMP EA.
  - LED LIGHT FIXTURES: 30 AMP EA.
  - CAPTURE JET FAN: 72 AMP EA.
  - \*ALL HOOD CIRCUITS ARE NOT TO EXCEED 15 AMP.
  - \*LIGHT BULBS, IF REQUIRED, ARE TO BE PROVIDED BY OTHERS\*

### CEILING HEIGHT NOTE

IF HALTON COMPANY IS TO PROVIDE CEILING CLOSURE PANELS, THE EXACT DIMENSION OF THE FINISHED CEILING HEIGHT MUST BE PROVIDED PRIOR TO RELEASE.

FINISHED CEILING HEIGHT A.F.F.:



### PERFORMANCE CRITERIA

OTHER MANUFACTURERS MUST PROVIDE A WRITTEN GUARANTEE OF PERFORMANCE, ENSURING THE SPECIFYING ENGINEER THAT THE SYSTEM WILL PERFORM TO THE ENGINEER'S SATISFACTION WHEN INSTALLED AND BALANCED ACCORDING TO DESIGN AND PLANS.

AND RESULTS OF AIR FLOW TESTS SHALL BE DETERMINED BY TAB PORTS AND PRESSURE VS. AIR FLOW CURVES. I CONEAL THAT RESERVE THE RIGHT TO REJECT ANY SYSTEM WHICH, WHEN INSTALLED, DOES NOT PROVIDE CAPTURE AND CONTAINMENT AT THE THRESHOLD FLOW RATE DETERMINED BY THE TEST METHOD.

REJECTED SYSTEM MUST BE REPLACED WITH SPECIFIED SYSTEM WITH ALL REPLACEMENT COSTS PAID BY MANUFACTURER OF REJECTED SYSTEM.

ANY CHANGES IN THE SPECIFIED SIZE OF POWER WIRING, PANELS, HANGERS OR REQUIREMENTS, OR GAS LINES DUE TO THE USE OF ANY SYSTEM OTHER THAN THAT WHICH IS SPECIFIED IN THE CONTRACT DOCUMENTS SHALL BE COORDINATED BY THE HOOD MANUFACTURER AND CONTRACTORS INVOLVED.

EFFICIENCY COMPARISON DATA TO BE PERFORMED IN ACCORDANCE WITH THE MOST CURRENT ASTM STANDARD F1034 AND INCLUDE RESULTS FOR THE REQUIRED CAPTURE AND CONTAINMENT EXHAUST AIR FLOW IN ACCORDANCE WITH THE TEST METHOD TO DETERMINE THE THRESHOLD OF CAPTURE AND CONTAINMENT. DATA MUST INCLUDE THERMAL IMAGING RESULTS VALIDATING CONFORMANCE TO ASTM F1034 AND SUPPLY AIR TEMPERATURE REQUIREMENT OF 74°.

NAME OF AIR WILL BE CALCULATED SO THAT THE SAME AMOUNT OF AIR WILL BE TAKEN FROM THE ZONE AS IS REQUIRED BY THE SPECIFIED SYSTEM. AN ADDITIONAL LOAD CANNOT BE PLACED ON THE KITCHEN HVAC SYSTEM.

THIS DRAWING MUST BE CHECKED, SIGNED AND RETURNED TO THE APPROPRIATE FACTORY. PLEASE REFER TO THE FOLLOWING INFORMATION ON MONITORING POSITIONS:

1. THE LOCATION OF THE MONITORING POSITIONS SHALL BE AS SHOWN ON THE DRAWING. NOTE TO APPROVER: ANY CHANGES IN COOKING EQUIPMENT SUCH AS INCREASED ENERGY INPUTS OR EQUIPMENT CHANGES DOOR, A RE-CALCULATION EXHAUST AIR FLOW MAY BE REQUIRED.

APPROVED FOR FABRICATION:  WITH CHANGES AS NOTED

DATE: \_\_\_\_\_

MAIL APPROVED DRAWINGS TO APPROPRIATE FACTORY BELOW:

WEBSITE: www.halton.com

HALTON CO. (USA)  
 101 INDUSTRIAL DRIVE  
 SCOTTSDALE, NY 12164  
 1-518-537-8600

DATE: 12.07.21

BY: SKM

REVISION DESCRIPTION

REV.	NO CHANGE	1	2	3	4	5	6	7
1								
2								
3								
4								
5								
6								
7								

PROJECT: SHAKE SHACK  
 LOCATION: SAN FRANCISCO, CA  
 DRAWN BY: SKM DATE: 11.22.21  
 SCALE: NOT TO SCALE  
 CONSULTANT: Halton

DRAWING TITLE: HOOD DETAILS  
 DRAWING No: U21-814  
 REV. NO.: 1 SHEET NO.: 1 of 5

STORE NO: CA #1399

**SHAKE SHACK**  
 STONESTOWN GALLERIA  
 SAN FRANCISCO, CA

DATE	DESCRIPTION
12/23/21	PERMIT/IBID SET
02/10/22	REVISION A
04/26/22	REVISION B
05/27/22	REVISION C
06/24/22	IFC SET
08/03/22	REVISION 2

STATUS: IFC SET

FOR REFERENCE ONLY

FIELD VERIFICATION:  
 The contractor shall verify all signed dimensions and location at the project site and notify Zebra Projects, INC. of any dimensional errors, or omissions or discrepancies before beginning or releasing any work. Do not scale these drawings.

COPYRIGHT © 2021:  
 Zebra Projects, INC. shall retain all common law, statutory and all other reserved rights. Neither the documents nor the information herein is to be reproduced, distributed, disclosed or otherwise used without the written consent of Zebra Projects, INC.

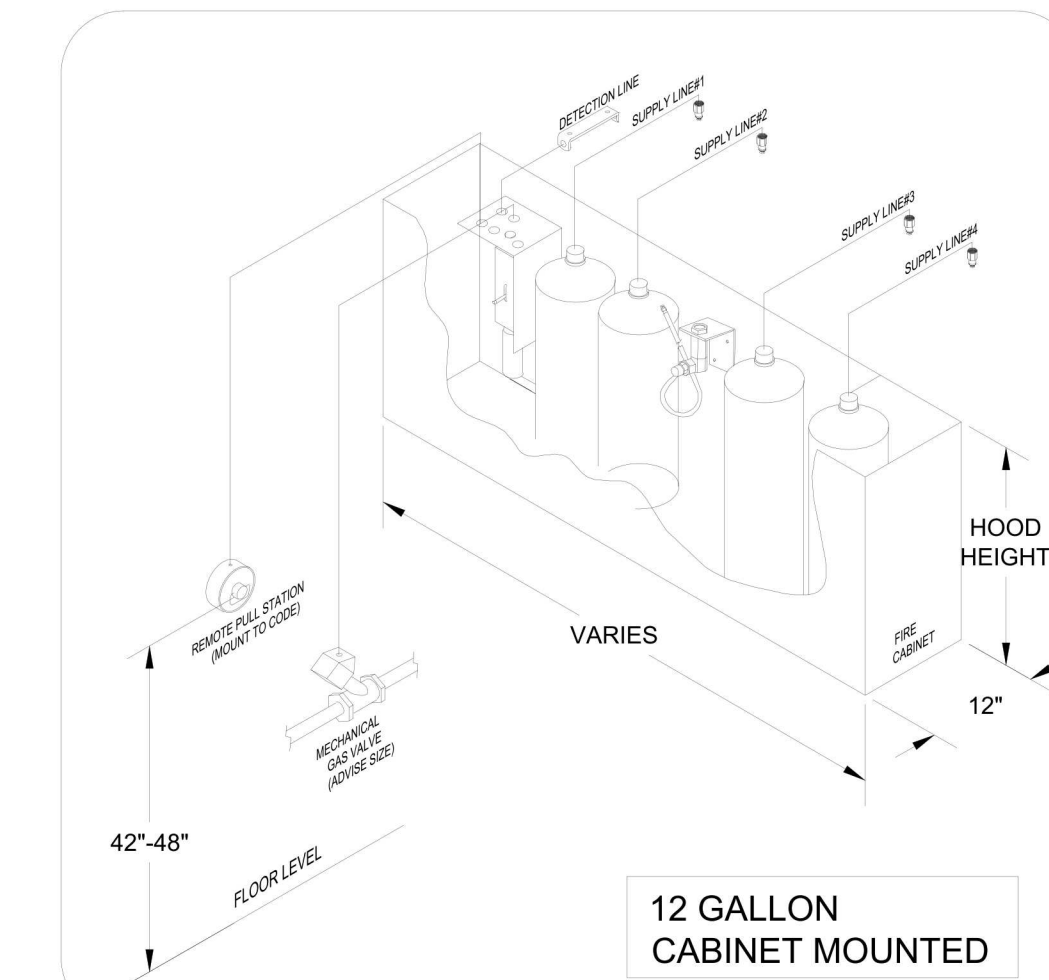
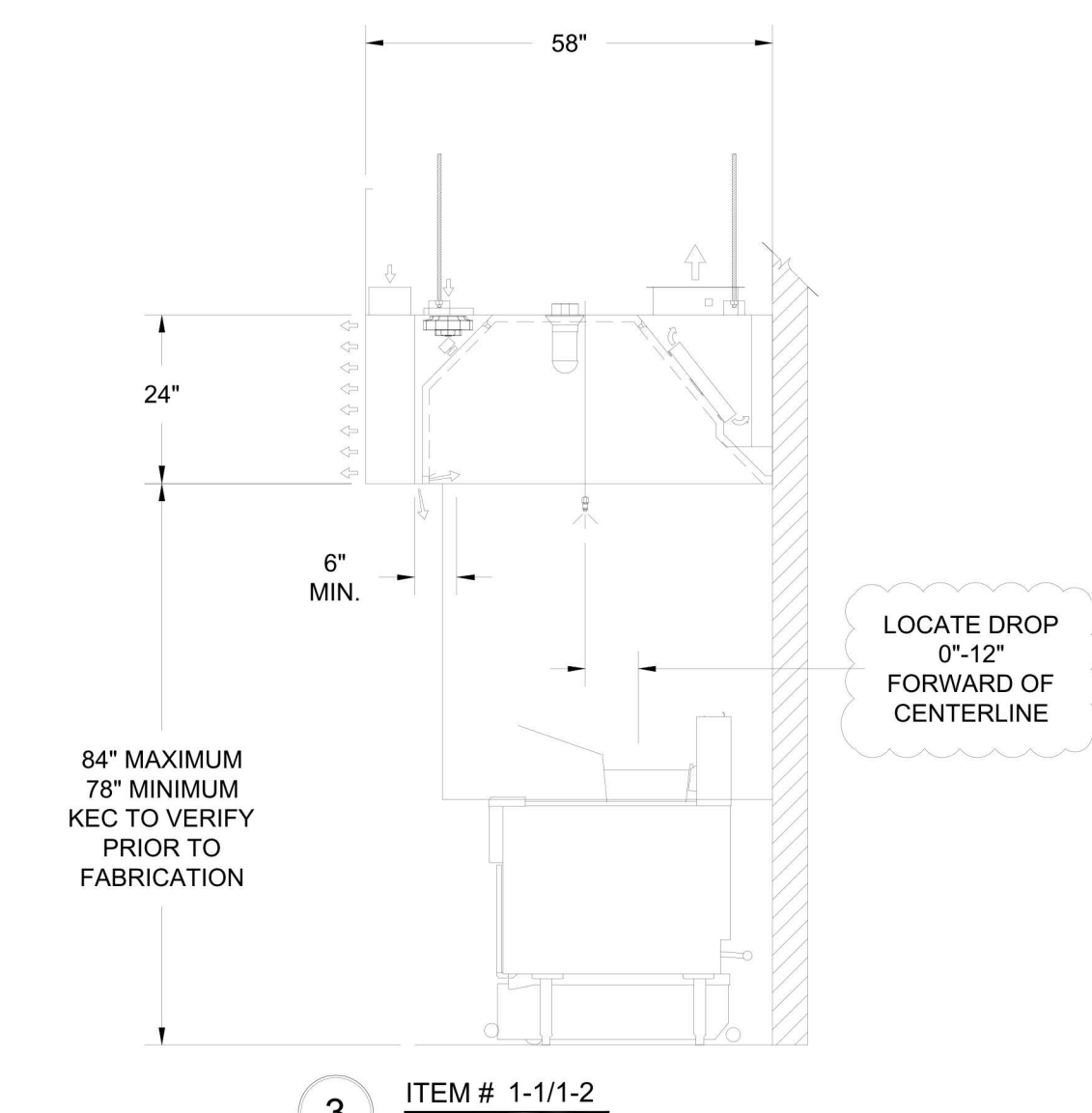
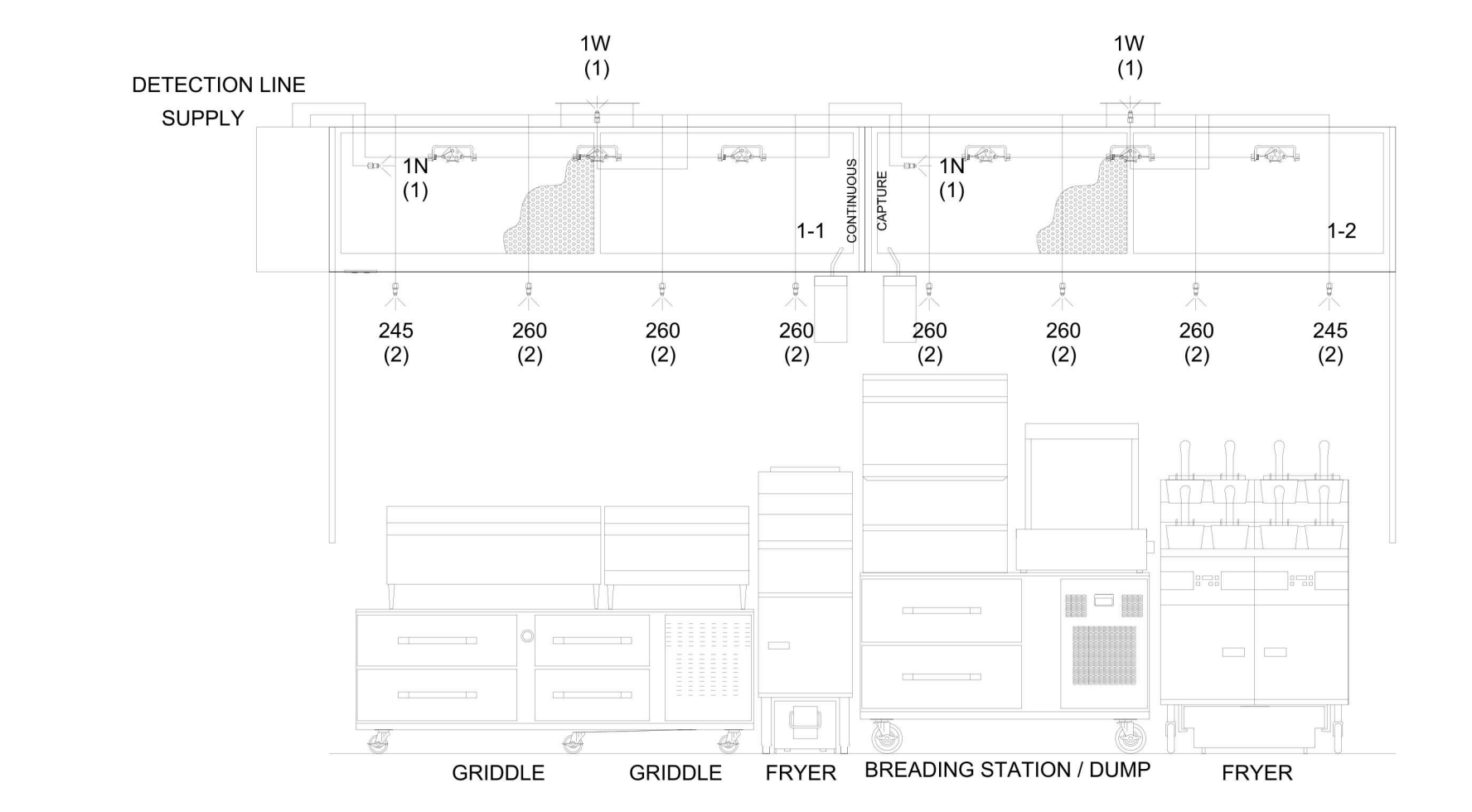
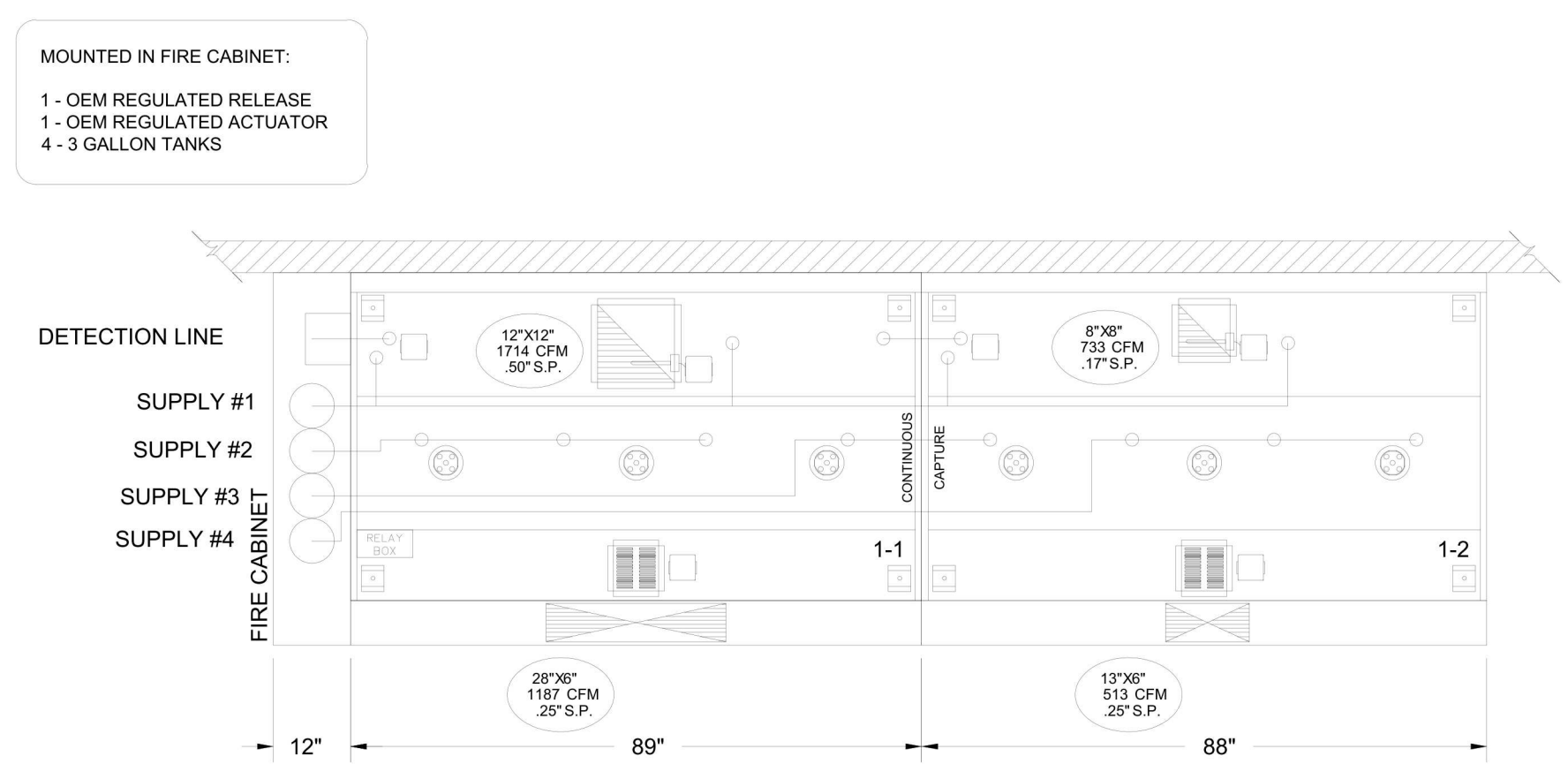
SHEET NAME: HALTON DRAWINGS

DATE: 12/18/20 PROJECT NO: 34285  
 DRAWN: AS NOTED SCALE: AS NOTED

SHEET NO: M701

**NOTE:**  
 THE DOCUMENTATION CONTAINED ON THIS SHEET WAS NOT PREPARED BY HENDERSON ENGINEERS AND IS INCLUDED IN THIS SET FOR REFERENCE ONLY. HENDERSON ENGINEERS REVIEWED THE DOCUMENTATION ON THIS SHEET FOR GENERAL COMPLIANCE WITH DESIGN INTENT. SUPPLIER IS RESPONSIBLE THAT ALL FURNISHED EQUIPMENT ON THIS SHEET COMPLIES WITH APPLICABLE LOCAL, STATE, AND FEDERAL LAWS, CODES, AND REGULATIONS.

**ANSUL R-102 FIRE SUPPRESSION SYSTEM**  
 FIRE SYSTEM IS INTEGRAL WITH FACTORY DESIGN/PIPING/FIELD CERTIFICATION



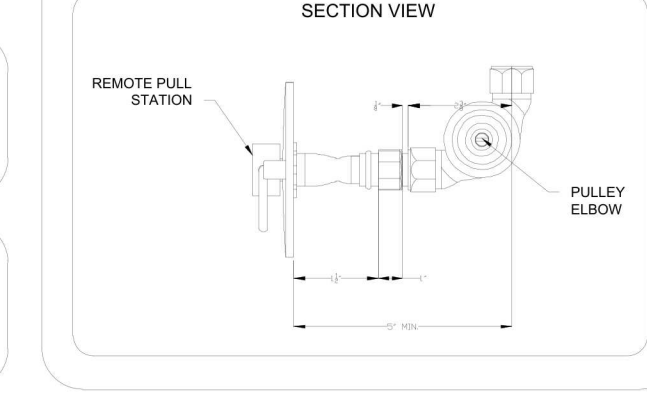
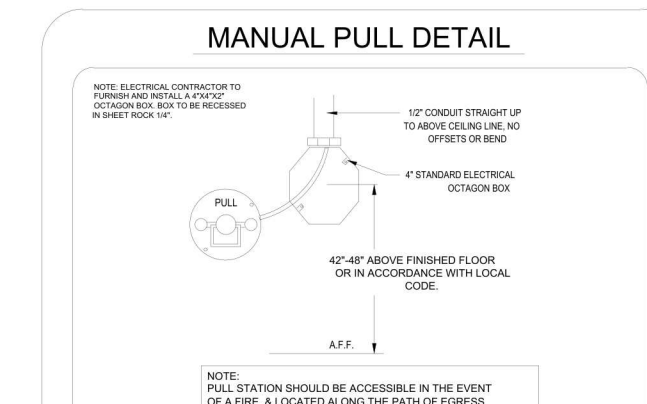
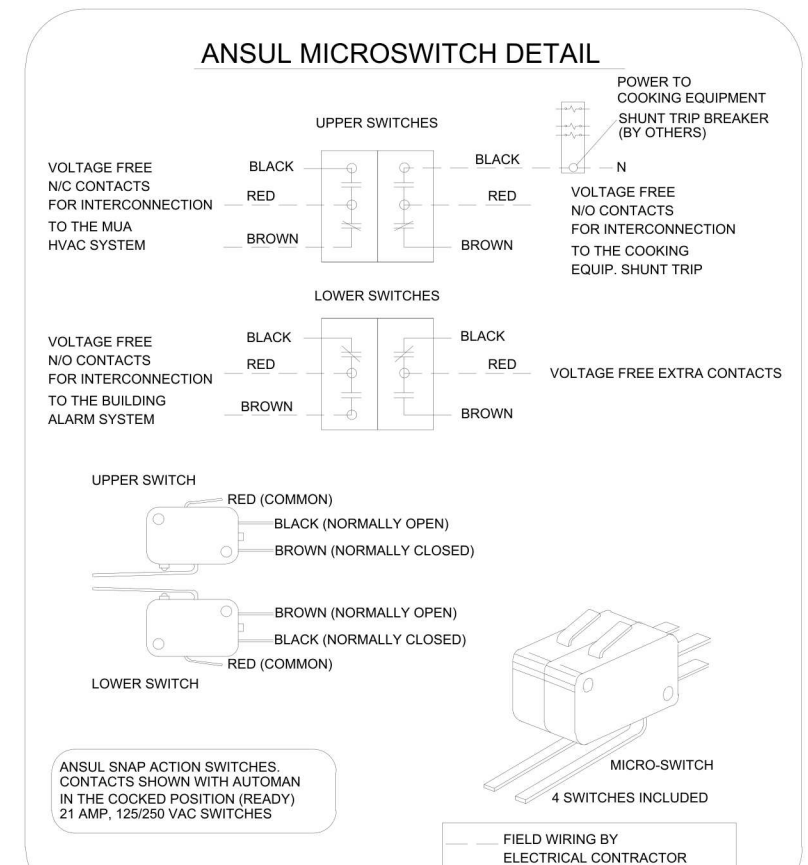
**FLOW POINT CHART**  
 ANSUL R-102 FLOW POINT CALCULATION

NOZZLE TYPE	NOZZLE FLOW PT.	NOZZLE QUANTITY	TOTAL FLOW PT.
3N	3	0	0
280	2	0	0
260	2	6	12
245	2	2	4
230	2	0	0
2W	2	0	0
230	2	0	0
1W	1	2	2
1N	1	2	2
1F	1	0	0
1/2N	1/2	0	0
TOTAL FLOW POINTS USED			20
MAX. SYSTEM FLOW POINTS:			24 (12 GALLON)

**ANSUL NOTES**

GENERAL NOTES:  
 1. THIS INSTALLATION IS TO BE MADE IN ACCORDANCE WITH THE R-102 INSTALLATION MANUAL AND IN ACCORDANCE WITH ALL STATE AND LOCAL CODES.  
 2. THE WIRE ROPE FOR THE DETECTOR AND REMOTE PULL STATION IS TO BE INSTALLED BY AN AUTHORIZED AND FACTORY TRAINED DISTRIBUTOR OR SERVICE REPRESENTATIVE.  
 3. THIS INSTALLATION IS TO BE INSPECTED, PUT INTO OPERATION AND CERTIFIED BY AN AUTHORIZED AND FACTORY TRAINED DISTRIBUTOR OR SERVICE REPRESENTATIVE.  
 4. ELECTRICAL CONTACTS AND WIRING FOR APPLIANCE SHUT OFF TO BE PROVIDED BY THE ELECTRICAL CONTRACTOR.  
 5. ANSUL R-102 RESTAURANT FIRE SUPPRESSION SYSTEMS HAVE BEEN TESTED AND ARE LISTED BY UNDERWRITERS LABORATORIES, INC. AS PRE-ENGINEERED SYSTEMS, AND WHEN INSTALLED AS SHOWN ON THIS DRAWING SHALL COMPLY WITH ALL RELEVANT ANSUL INSTALLATION RECHARGE INSPECTION AND MAINTENANCE MANUALS AND SHALL COMPLY WITH NFPA 96 WHEN INSTALLED AND CERTIFIED BY AUTHORIZED TRAINED ANSUL DISTRIBUTORS IN ACCORDANCE WITH THE MANUAL.  
 6. ALL AGENT DISTRIBUTION PIPING AND DETECTION CONDUIT HOOD PENETRATIONS MUST BE PROPERLY SEALED IN ACCORDANCE WITH NFPA 96.

DISTRIBUTION PIPING REQUIREMENT NOTES:  
 1. PIPE SHALL BE 3/8" SCHEDULE 40 BLACK IRON, CHROME PLATED OR STAINLESS STEEL UNLESS OTHERWISE NOTED.  
 2. FINAL NOZZLE LOCATION MAY NOT VARY FROM LOCATION SHOWN.



- 1) ANSUL R-102 FIRE SYSTEM
- 2) FOUR TANK SYSTEM (12 GALLON)
- 3) 3/8" BLACK IRON PIPING (CONCEALED)
- 3/8" S.S. APPLIANCE DROPS (EXPOSED)
- 4) MECHANICAL GAS VALVE = (ADVISE SIZE)

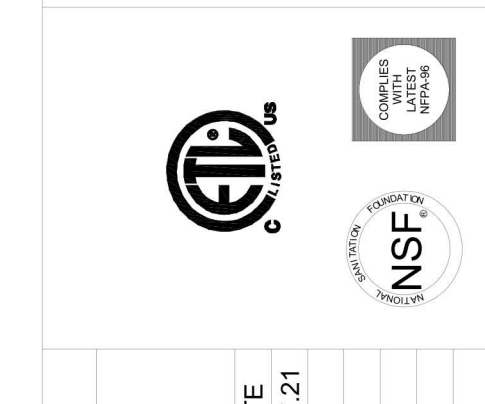
**\*\*NOTE\*\***  
 ANSUL R-102  
 OVERLAPPING SYSTEM

ALL APPLIANCE DROPS TO HAVE SWIVELS

**NOTE:**  
 ALL PIPING FOR LOW PROXIMITY APPLIANCE PROTECTION SHALL BE PROVIDED AND INSTALLED BY THE INSTALLING ANSUL DISTRIBUTOR & NOT BY HALTON.

**NOTE:**  
 HAND HELD EXTINGUISHERS, IF REQUIRED, ARE TO BE PROVIDED BY OTHERS.

THIS DRAWING MUST BE CHECKED, SIGNED AND RETURNED TO THE APPROPRIATE FACTORY. PLEASE REFER TO THE FOLLOWING:  
 1. THE ANSUL R-102 INSTALLATION MANUAL FOR MOUNTING POSITIONS AND CLEARANCE REQUIREMENTS FOR COOKING EQUIPMENT.  
 2. THE ANSUL R-102 INSTALLATION MANUAL FOR MOUNTING POSITIONS AND CLEARANCE REQUIREMENTS FOR COOKING EQUIPMENT.  
 3. THE ANSUL R-102 INSTALLATION MANUAL FOR MOUNTING POSITIONS AND CLEARANCE REQUIREMENTS FOR COOKING EQUIPMENT.  
 ANY CHANGES IN COOKING EQUIPMENT SUCH AS INCREASED ENERGY INPUTS OR EQUIPMENT CHANGES OCCUR, A RE-CALCULATION OF FLOW POINTS MAY BE REQUIRED.  
 RETIRE AND RESUBMIT  
 WITH NO CHANGES  
 WITH CHANGES AS NOTED  
 APPROVED FOR FABRICATION: \_\_\_\_\_  
 DATE: \_\_\_\_\_



WEBSITE: www.halton.com

MAIL APPROVED DRAWINGS TO APPROPRIATE FACTORY BELOW:

REV.	NO CHANGE	DATE	BY	DATE
1		12.07.21	SKM	12.07.21
2				
3				
4				
5				
6				
7				

PROJECT: **SHAKE SHACK**  
 LOCATION: SAN FRANCISCO, CA  
 DRAWN BY: SKM DATE: 11.22.21  
 SCALE: NOT TO SCALE  
 CONSULTANT: **Halton**

DRAWING TITLE: **HOOD DETAILS**  
 DRAWING No: **U21-814**  
 REV. NO.: 1 SHEET NO.: 2 of 5

**NOTE:**  
 THE DOCUMENTATION CONTAINED ON THIS SHEET WAS NOT PREPARED BY HENDERSON ENGINEERS AND IS INCLUDED IN THIS SET FOR REFERENCE ONLY. HENDERSON ENGINEERS REVIEWED THE DOCUMENTATION ON THIS SHEET FOR GENERAL COMPLIANCE WITH DESIGN INTENT. SUPPLIER IS RESPONSIBLE THAT ALL FURNISHED EQUIPMENT ON THIS SHEET COMPLIES WITH APPLICABLE LOCAL, STATE, AND FEDERAL LAWS, CODES, AND REGULATIONS.

STORE NO: **CA #1399**

**SHAKE SHACK**  
 STONESTOWN GALLERIA  
 SAN FRANCISCO, CA

**REVISION**

DATE	DESCRIPTION
12/20/21	PERMIT/IBID SET
02/10/22	REVISION A
04/26/22	REVISION B
05/27/22	REVISION C
06/24/22	IFC SET
08/03/22	REVISION 2

STATUS: **IFC SET**

FOR REFERENCE ONLY

FIELD VERIFICATION:  
 The contractor shall verify all signed dimensions and location at the project site and notify Zebra Projects, INC. of any dimensional errors, or omissions or discrepancies before beginning or resuming any work. Do not scale these drawings.  
 COPYRIGHT © 2021:  
 Zebra Projects, INC. shall retain all common law, statutory and all other reserved rights. Neither the documents nor the information herein is to be reproduced, distributed, disclosed or otherwise used without the written consent of Zebra Projects, INC.

SHEET NAME: **HALTON DRAWINGS**

DATE: 12/18/20 PROJECT NO: 34285

DRAWN: SCALE: AS NOTED

SHEET NO: **M702**

MUA CHART	
DATA	IMPERIAL
Model	MUA-DGX-1800
Max. Supply Air	1800 CFM
Design Supply Air	1700 CFM
Internal S.P.	1.10" W.G.
External S.P.	1.50" W.G.
Total S.P.	2.60" W.G.
Motor	3 hp
Power	1.59 bhp
Full Load AMPS	5.5
Motor RPM	1800
Voltage/Phase/HZ	460/3/60
Fan RPM	2165 @ 60 HZ
Mounting	Exterior
Blower Model	ATLI 7-7 T2
Material Type	G90 Galv. 20GA.
Paint Color	Unpainted
Weight	649 lbs

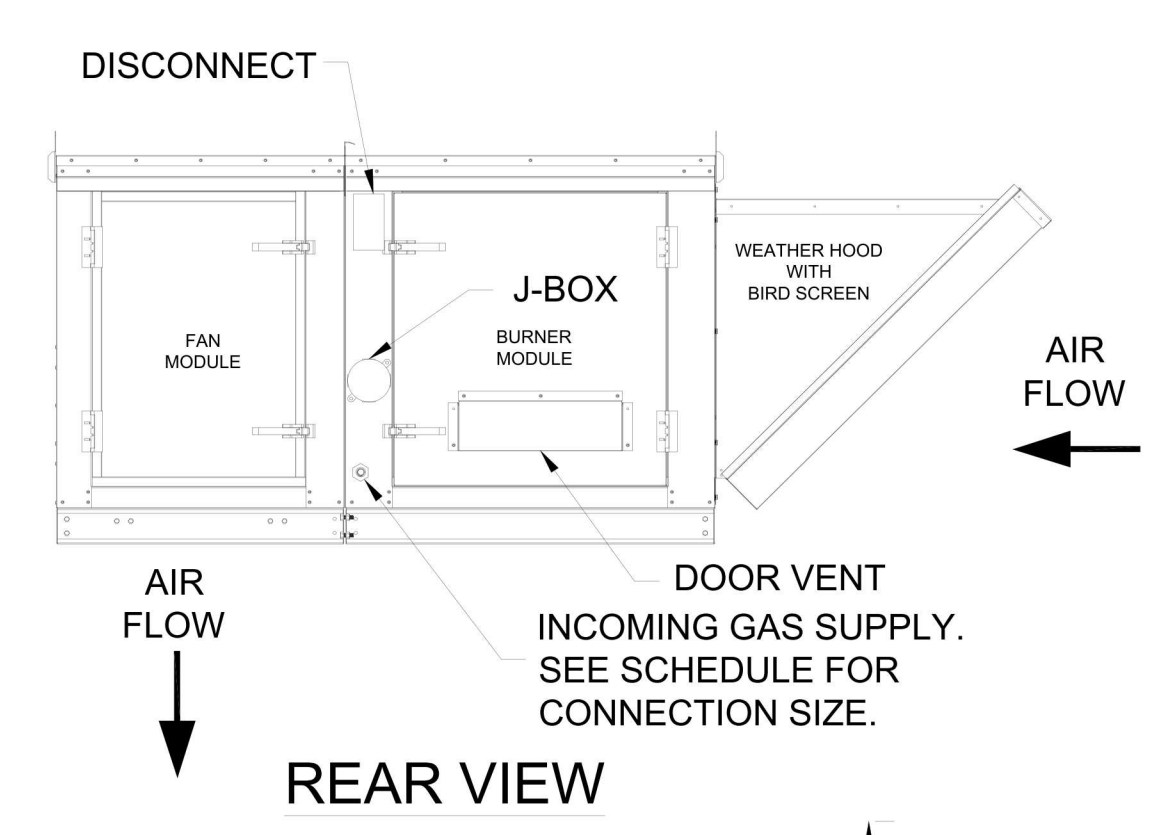
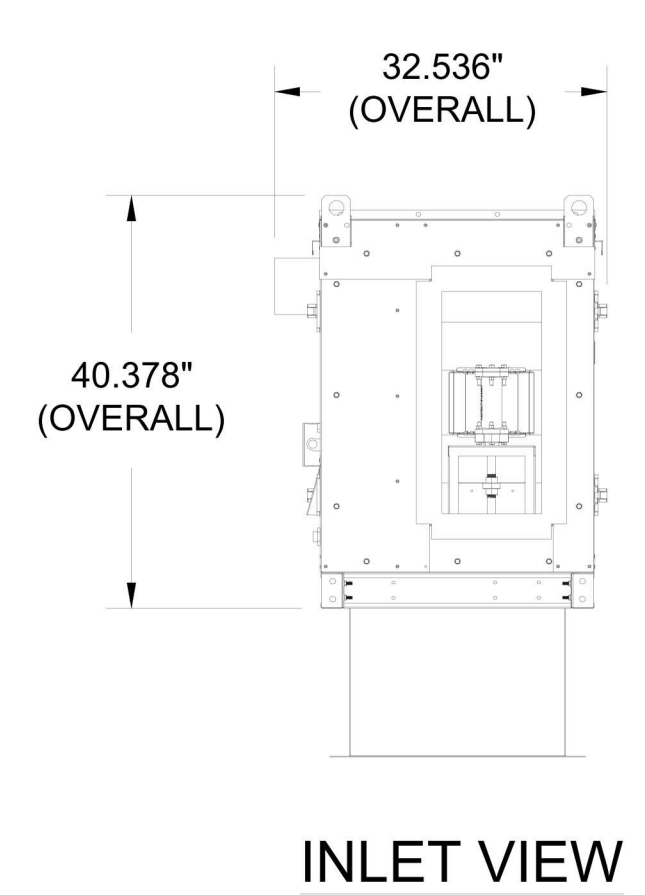
  

HEATING INFORMATION	
Gas Type	Natural
Min. Gas Pressure	8" W.C.
Max. Gas Pressure	14" W.C.
Gas Line Size	1/2"
Discharge Temperature	70°F
Temperature Rise	31°F
Heat Input MBH	61.8
Heat Output MBH	56.9

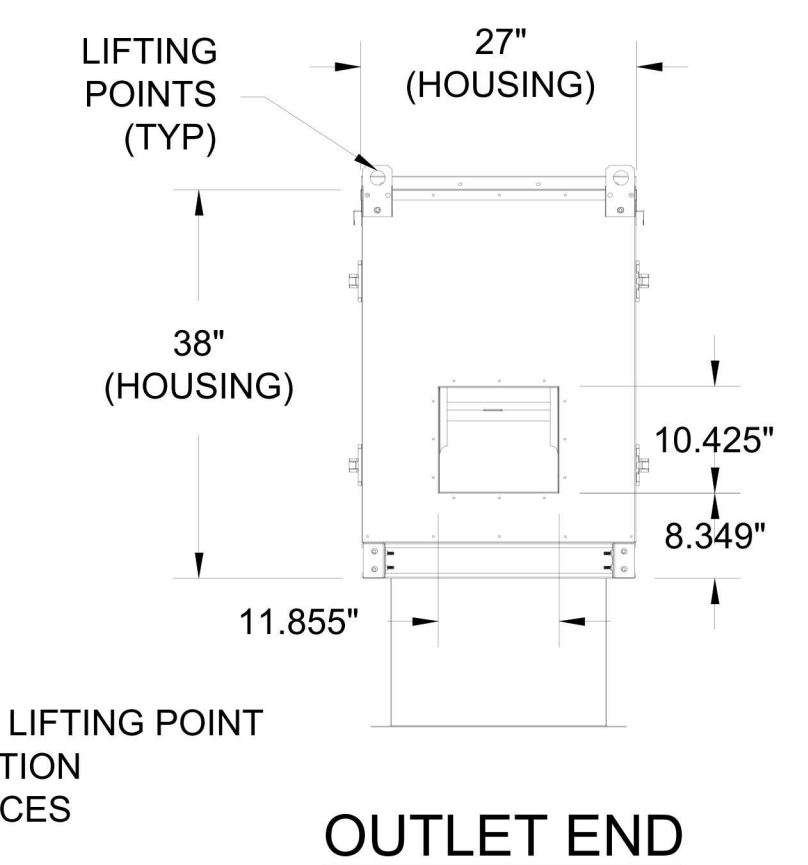
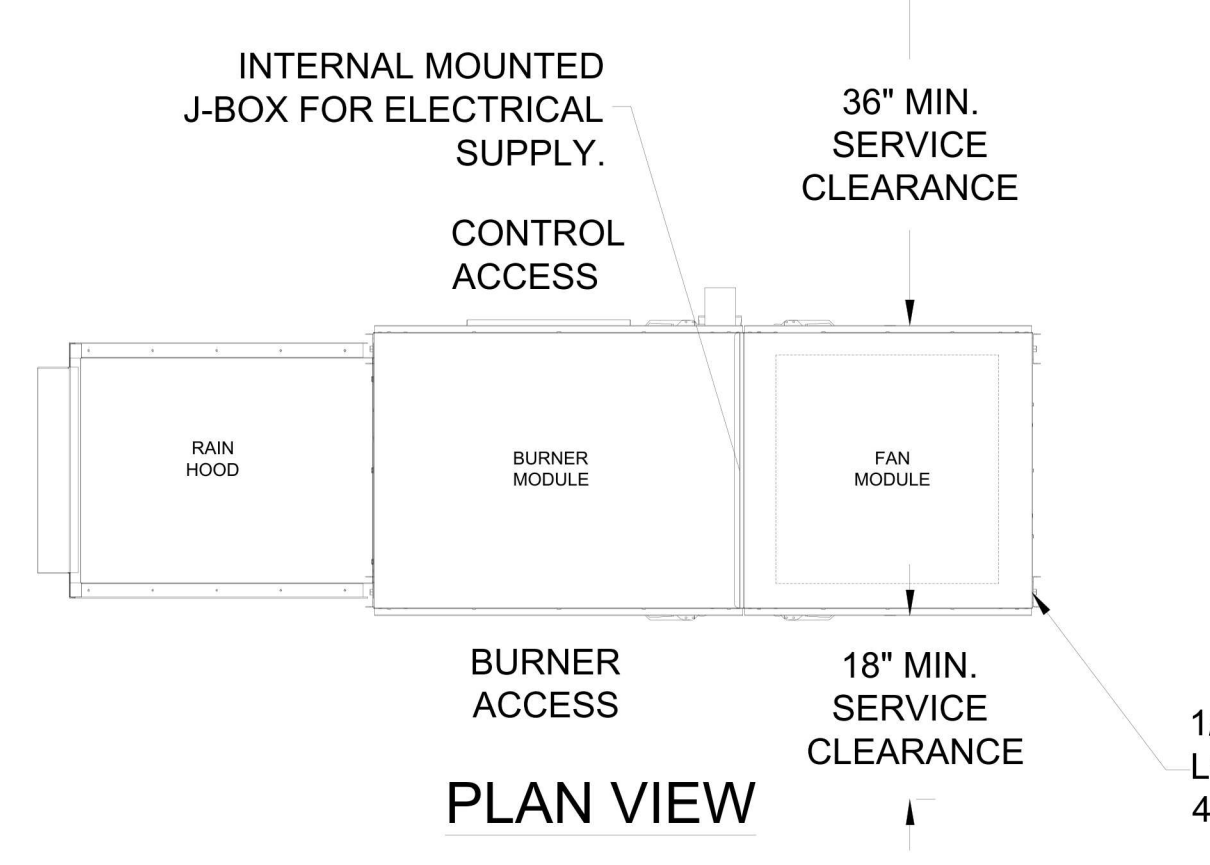
UNIT FEATURES	
Drive Package:	<input checked="" type="checkbox"/> Belt Drive Fan (Comefri ATLI) Direct <input checked="" type="checkbox"/> Drive Plenum Fan (Comefri ANPA)
Insulation:	<input checked="" type="checkbox"/> 1" Duct Board <input type="checkbox"/> No Insulation
Unit Mounted D.A.T. Controls (temperature)	<input type="checkbox"/> Remote start/stop Controls (fan)
Isolators:	<input checked="" type="checkbox"/> Neoprene <input checked="" type="checkbox"/> Seismic
Intake Damper:	<input checked="" type="checkbox"/> Motorized <input type="checkbox"/> Gravity
Gas Train:	<input type="checkbox"/> Piloted <input checked="" type="checkbox"/> Direct Spark
Drive Package:	<input type="checkbox"/> Constant Volume. <input checked="" type="checkbox"/> Variable Speed: <ul style="list-style-type: none"> <li><input checked="" type="checkbox"/> Powerflex 523 VFD</li> <li><input checked="" type="checkbox"/> Danfoss VFD</li> <li><input checked="" type="checkbox"/> Weg VFD</li> </ul>
Intake Hood w/ 2" Alum. Mesh Filters & Birdscreen	<input type="checkbox"/> MERV 8 Filtered Intake (Dust Filter)
Roof Curb:	<input checked="" type="checkbox"/> w/ Insulation <input checked="" type="checkbox"/> w/ Wood Nailer

ITEM #MUA-01

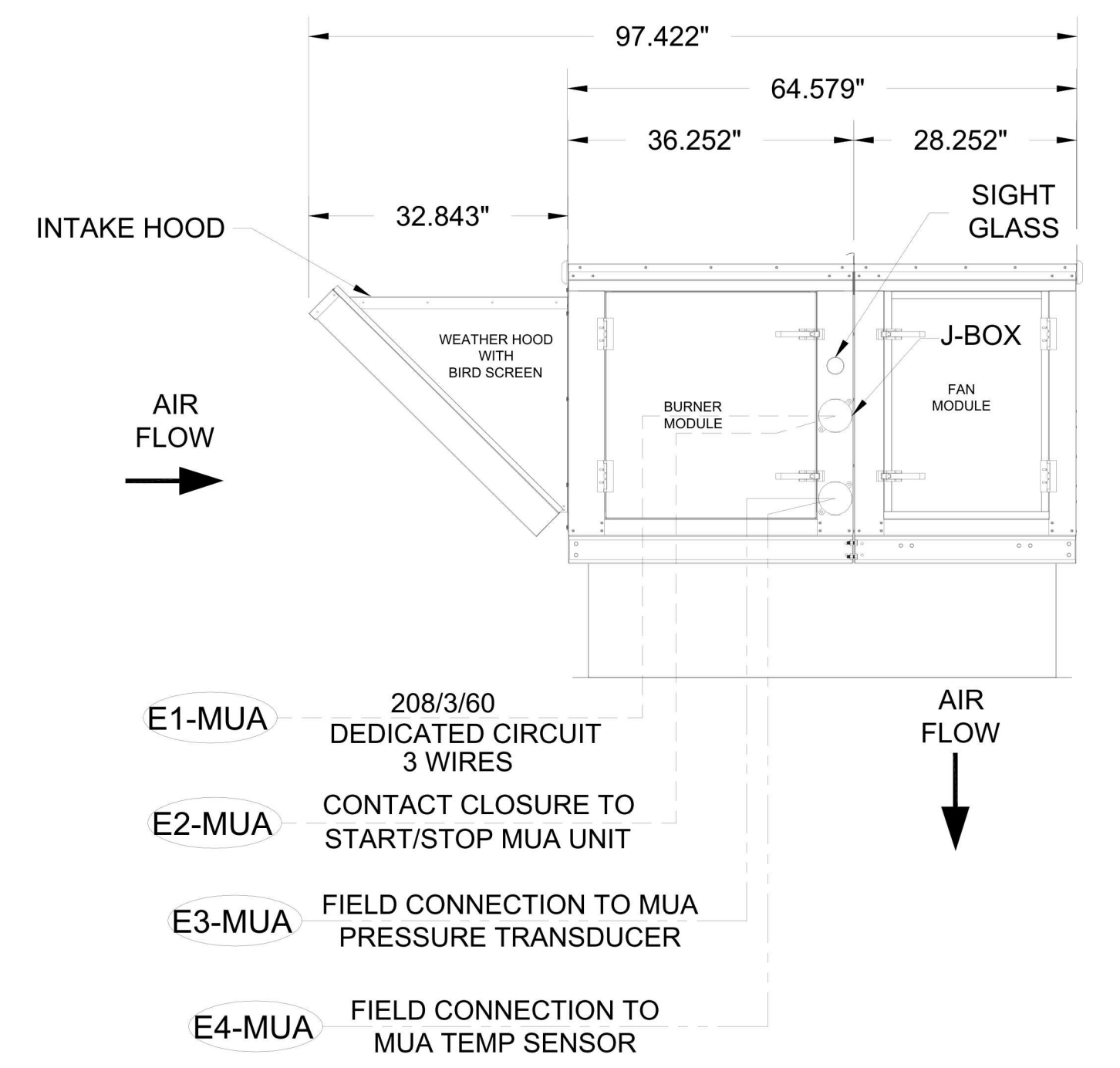
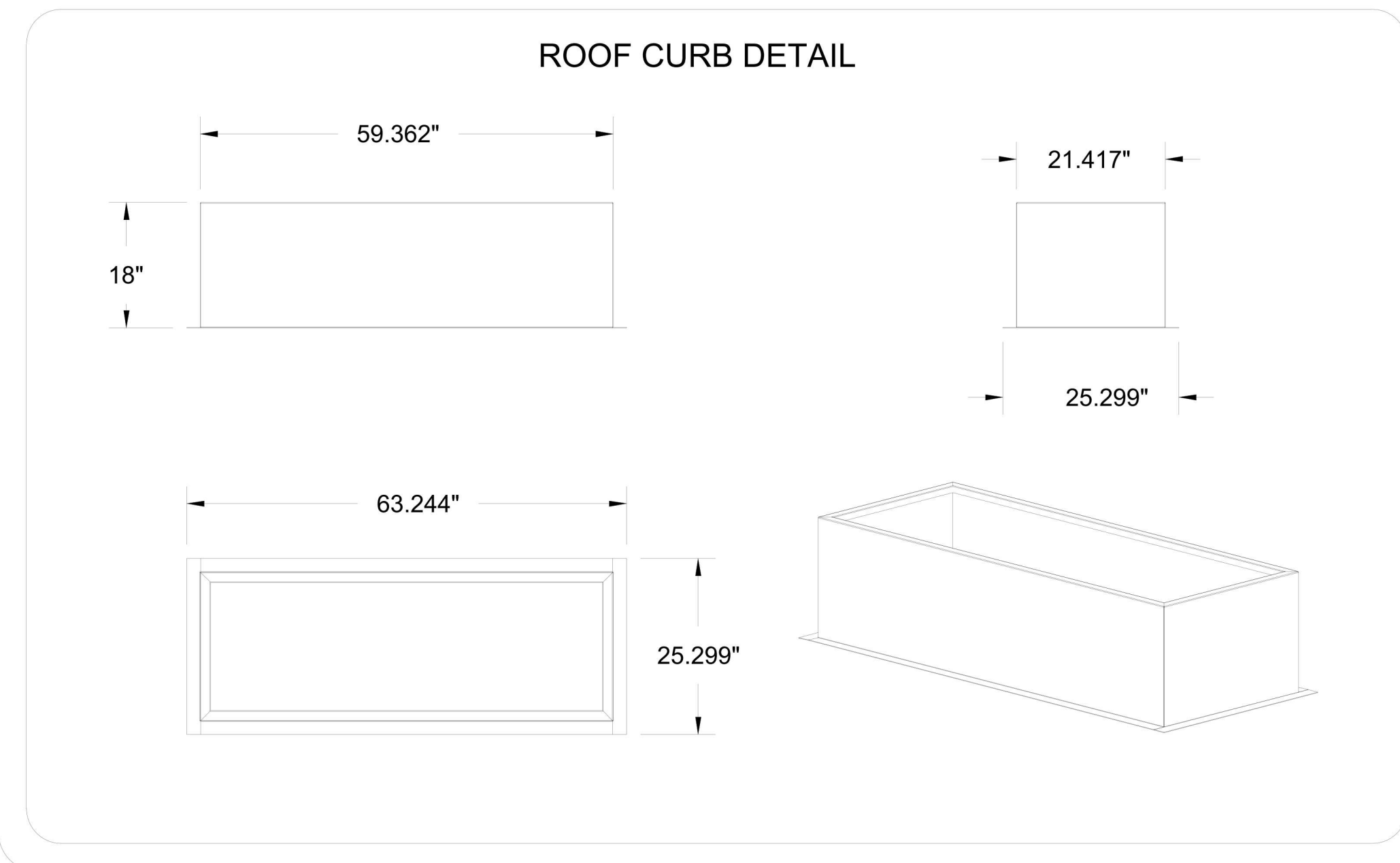
ELECTRICAL CONNECTION WILL COME UP THROUGH CURB INTO BOTTOM OF UNIT



NOTE:  
LIFTING POINTS ARE NOT TO BE USED AS ANCHORS FOR SUSPENDED MOUNTING. THEY ARE FOR LIFTING ONLY



ELECTRICAL SCHEDULE			
CONNECTION #	CONNECTION DESCRIPTION	FROM	TO
E1-MUA	208/3/60 - FAN MOTOR POWER - 3 WIRES	BUILDING SOURCE	J-BOX
E2-MUA	CONTACT CLOSURE TO START/STOP MUA UNIT	REMOTE PANEL	MUA UNIT
E3-MUA	FIELD CONNECTION FOR PRESSURE TRANSDUCER - 2 WIRES	REMOTE PANEL	MUA UNIT
E4-MUA	FIELD CONNECTION FOR TEMP SENSOR - 2 WIRES	REMOTE PANEL	MUA UNIT



**SPECIFICATIONS**

**GAS INFORMATION**  
MIDCO 6" SS BURNER  
PRESSURE REGULATOR SUPPLIED  
RTC GAS CONTROLS  
DISCHARGE TEMPERATURE DIAL MOUNTED IN UNIT  
HIGH TEMP LIMIT SWITCH SET TO 140°F

**ELECTRICAL INFORMATION**  
460V / 3PH / 60Hz SUPPLY  
INTEGRAL NON-FUSED DISCONNECT SWITCH  
PREMIUM EFFICIENCY MOTOR  
INTEGRAL MOTOR STARTER WITH THERMAL OVERLOADS  
FIRE PROTECTION INTERLOCK  
REMOTE START/STOP  
50% MUA TURN DOWN

**EQUIPMENT SPECIFICATIONS**  
ENTERING AIR THERMOSTAT/LOW TEMPERATURE CUTOUT  
EXTERNAL PROFILE ADJUSTMENT WITH PRESSURE GAUGE  
GALVANIZED FINISH  
0" CLEARANCE ON TOP & BOTTOM OF UNIT  
UNIT SHIPS ASSEMBLED IN ONE PIECE  
1" CLEARANCE TO COMBUSTIBLE ON ENDS LISTED 18" FROM COMBUSTIBLE ON SIDES

MAIL APPROVED DRAWINGS TO APPROPRIATE FACTORY BELOW:

HALTON CO. (CANADA)  
1021 BIRCHVIEW PLACE  
MISSISSAUGA, ONTARIO L4W 3R7  
1-905-624-0307

HALTON CO. (USA)  
301 INDUSTRIAL DRIVE  
SCOTTSDALE, AZ 85251  
1-270-237-5600

REVISION DESCRIPTION

REV.	DATE	BY	SKM
1	12/07/21	SKM	12/07/21
2			
3			
4			
5			
6			
7			

PROJECT: SHAKE SHACK  
LOCATION: SAN FRANCISCO, CA  
DRAWN BY: SKM DATE: 11.22.21  
SCALE: NOT TO SCALE  
CONSULTANT:

DRAWING TITLE: MUA-DG 1800  
DRAWING NO.: U21-814  
REV. NO.: 1 SHEET NO.: 3 of 5

DATE: 12/07/21

STORE NO: CA #1399

**SHAKE SHACK**  
STONETOWN GALLERIA  
SAN FRANCISCO, CA

REVISION	
DATE	DESCRIPTION
12/23/21	PERMIT/BID SET
02/10/22	REVISION A
04/26/22	REVISION B
05/27/22	REVISION C
06/24/22	IFC SET
08/03/22	REVISION 2

STATUS: IFC SET

FOR REFERENCE ONLY

FIELD VERIFICATION:  
The contractor shall verify all signed dimensions and condition of the project site and notify Zebra Projects, INC. of any dimensional errors, or omissions or discrepancies before beginning or fabricating any work. Do not scale these drawings.

COPYRIGHT © 2021:  
Zebra Projects, INC. shall retain all common law, statutory and all other reserved rights. Neither the documents nor the information herein is to be reproduced, distributed, disclosed or otherwise used without the written consent of Zebra Projects, INC.

SHEET NAME: HALTON DRAWINGS

DATE: 12/18/20 PROJECT NO: 34285  
DRAWN: SCALE: AS NOTED

SHEET NO: M703

NOTE:  
THE DOCUMENTATION CONTAINED ON THIS SHEET WAS NOT PREPARED BY HENDERSON ENGINEERS AND IS INCLUDED IN THIS SET FOR REFERENCE ONLY. HENDERSON ENGINEERS REVIEWED THE DOCUMENTATION ON THIS SHEET FOR GENERAL COMPLIANCE WITH DESIGN INTENT. SUPPLIER IS RESPONSIBLE THAT ALL FURNISHED EQUIPMENT ON THIS SHEET COMPLIES WITH APPLICABLE LOCAL, STATE, AND FEDERAL LAWS, CODES, AND REGULATIONS.

STORE NO:  
**CA #1399**

**SHAKE SHACK**  
 STONETOWN GALLERIA  
 SAN FRANCISCO, CA

REVISION	
DATE	DESCRIPTION
12/20/21	PERMIT/BID SET
A 02/10/22	REVISION A
B 04/26/22	REVISION B
C 05/27/22	REVISION C
T 06/24/22	IFC SET
Z 08/03/22	REVISION 2

STATUS:  
**IFC SET**

FOR REFERENCE ONLY

**FIELD VERIFICATION:**  
 The contractor shall verify all signed dimensions and condition at the project site and notify Zebra Projects, INC. of any dimensional errors, or omissions or discrepancies before beginning or fabricating any work. Do not scale these drawings.

**COPYRIGHT © 2021:**  
 Zebra Projects, INC. shall retain all common law, statutory and all other reserved rights. Neither the documents nor the information herein is to be reproduced, distributed, disclosed or otherwise used without the written consent of Zebra Projects, INC.

SHEET NAME:  
**HALTON DRAWINGS**

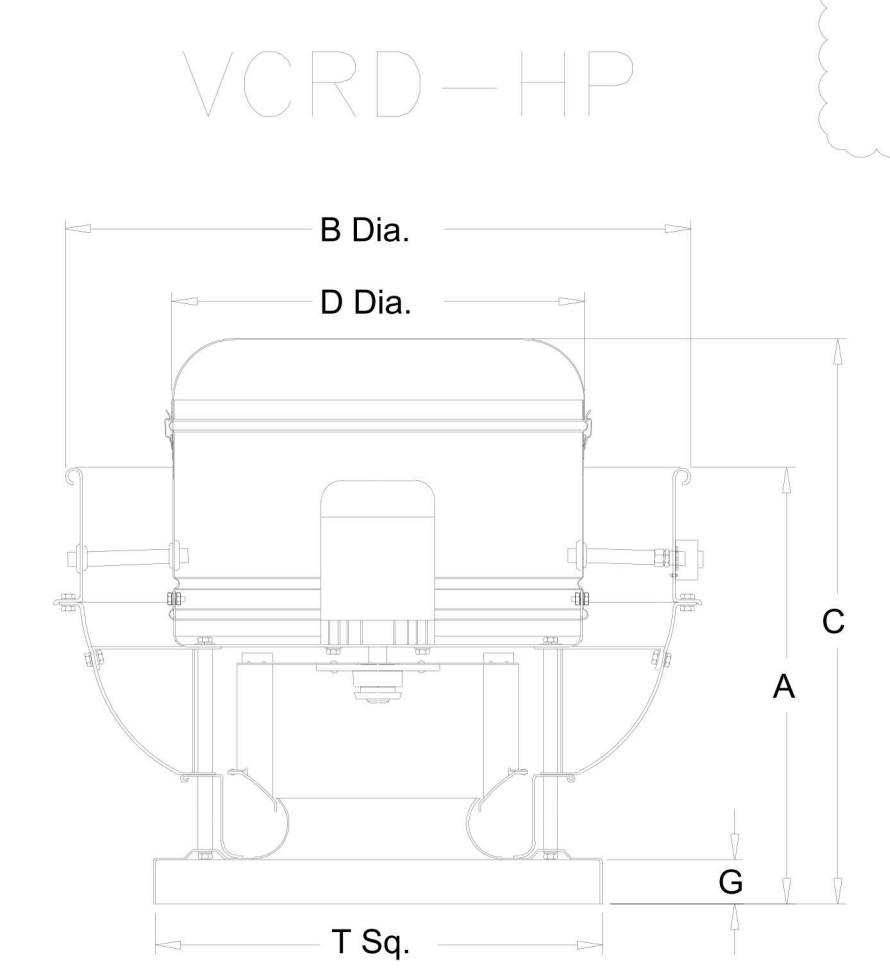
DATE: 12/18/20 PROJECT NO: 34285

DRAWN: SCALE: AS NOTED

SHEET NO:  
**M704**

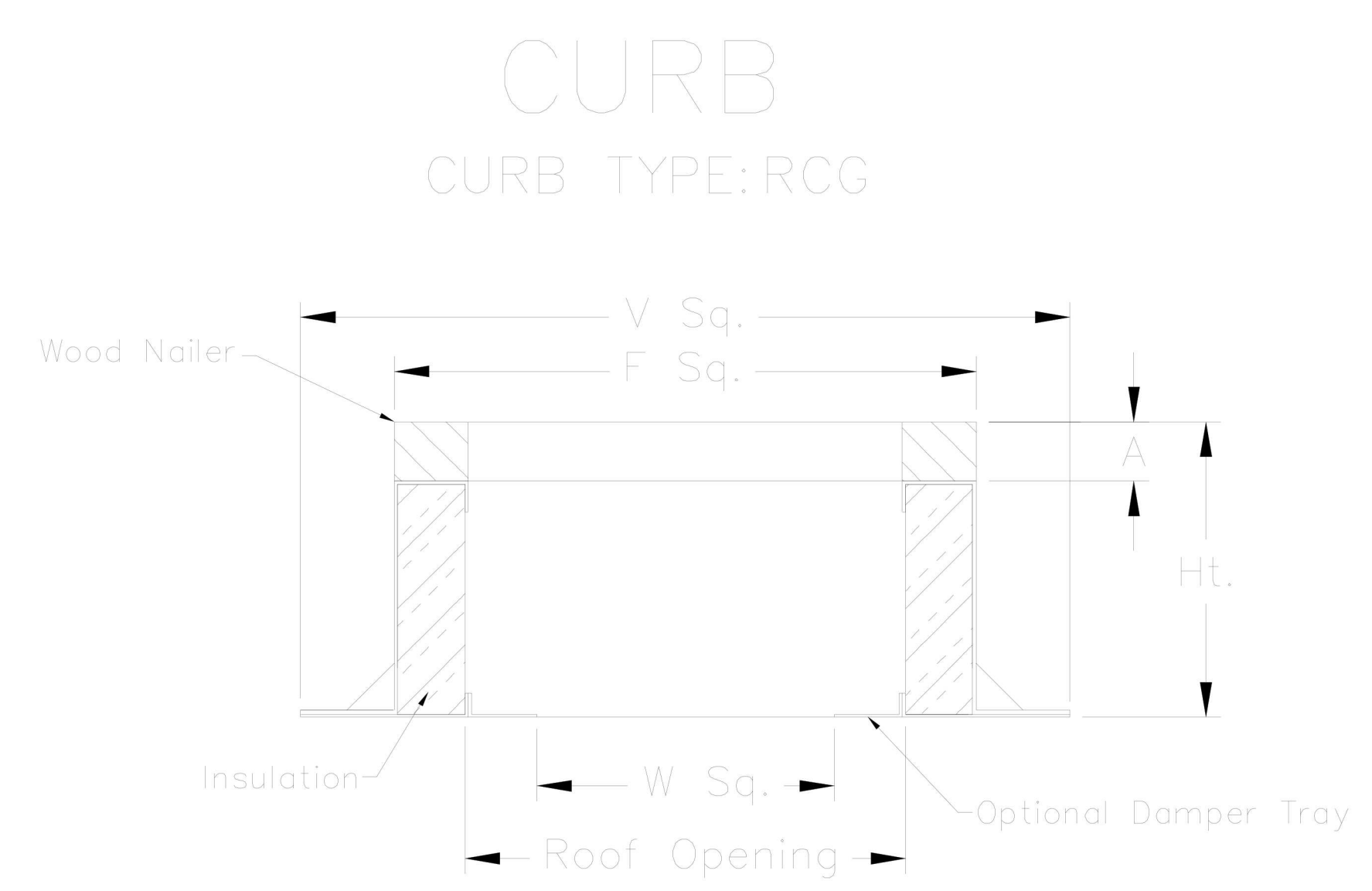
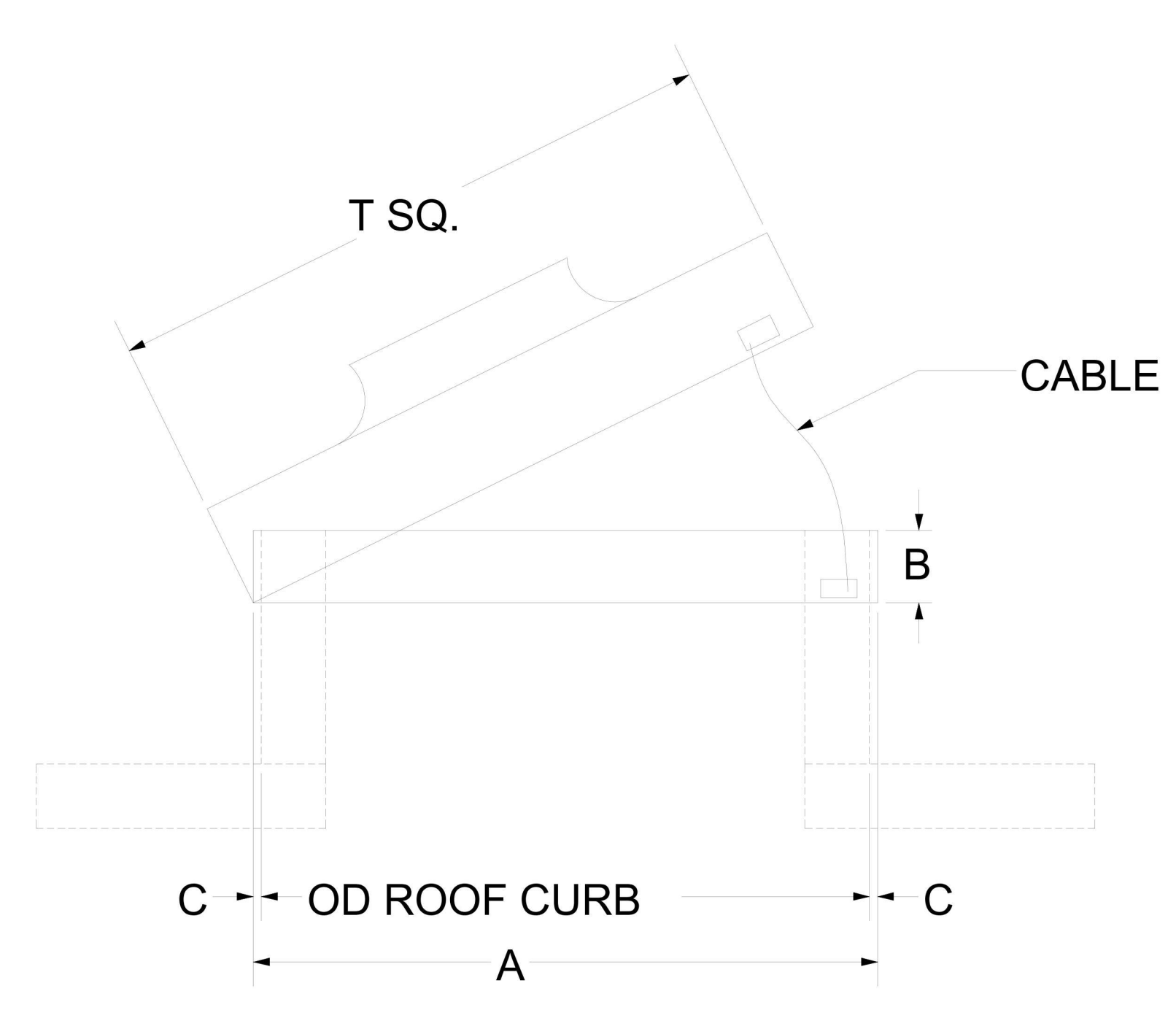
FAN INFORMATION TABLE								ACCESSORIES
FAN NO	MODEL	QTY	CFM	S.P.	H.P.	VOLTAGE	AMPS	
EF-1	VCRD-HP	1	1714	1.5	3/4	115/1/60	13.8	DISCONNECT NEMA 3 PRE-WIRED, ROOF CURB RCG 22, LABEL UL762, HINGED BASE KIT, KEYWAY GREASE TROUGH, FAN SPEED CONTROLLER
EF-2	VCRD-HP	1	733	1.17"	1/3	115/1/60	7.2	DISCONNECT NEMA 3 PRE-WIRED, ROOF CURB RCG 22 LABEL UL762, HINGED BASE KIT, KEYWAY GREASE TROUGH, FAN SPEED CONTROLLER

**NOTE:**  
 ELECTRICAL CONNECTIONS TO BE MADE ON HINGE SIDE OF FAN.



TAG	A	B	C	D	G	T Sq.	Roof Opening Sq.	SHIP'G WEIGHT
EF-1	20 15/16"	34 11/16"	27 3/4"	23 13/16"	2"	24"	19 1/2"	179
EF-2	20 15/16"	34 11/16"	27 1/2"	23 13/16"	2"	24"	19 1/2"	173

**NOTE:**  
 ON ROOF UNITS, ANCHOR THE FAN SECURELY TO THE CURB. ANCHORING THROUGH THE VERTICAL PORTION OF THE CURB CAP FLANGE IS RECOMMENDED. USE A MINIMUM OF FOUR LAG BOLTS OR OTHER SUITABLE FASTENERS.



TAG	QTY	DESCRIPTION	MATERIAL GAUGE	A	F Sq.	V Sq.	W Sq.	ROOF OPENING	OPTIONS
EF-1	1	RCG 22	18	1.5"	22.5"	26.5"	15.75"	19.5"	1
EF-2	1	RCG 22	18	1.5"	22.5"	26.5"	15.75"	19.5"	1

MAIL APPROVED DRAWINGS TO APPROPRIATE FACTORY BELOW:

PROJECT: SHAKE SHACK DRAWING TITLE: FAN DETAILS DRAWING NO.: U21-814 REV. NO.: 1 SHEET NO.: 4 of 5	HALTON CO. (USA) 101 INDUSTRIAL DRIVE SAN FRANCISCO, CA 94103 TEL: 415-770-2700 FAX: 415-770-2700	HALTON CO. (CANADA) 1021 BREWER PLACE MISSISSAUGA, ONT L4X 1R7 TEL: 905-824-0301 FAX: 905-824-0301	WEBSITE: www.halton.com DATE: 12/07/21 BY: SAM CHECKED: [ ] DATE: [ ] BY: [ ] CHECKED: [ ] DATE: [ ] BY: [ ] CHECKED: [ ] DATE: [ ]
-------------------------------------------------------------------------------------------------------------	------------------------------------------------------------------------------------------------------------	-------------------------------------------------------------------------------------------------------------	-------------------------------------------------------------------------------------------------------------------------------------------------------------------

REVISION DESCRIPTION

1 NO CHANGE  
 2  
 3  
 4  
 5  
 6  
 7

**Halton**

REVISIONS MUST BE CONTROLLED, STORED AND RETURNED TO THE APPROPRIATE FACTORY:  
 1. ALL DIMENSIONAL INFORMATION, INCLUDING POSITIONS & THE QUALITY AND TYPE OF COATING EQUIPMENT.  
 NOTE TO APPLICATOR: THE POSITIONING OF THE EQUIPMENT MUST BE ACCURATE AND THE POSITIONING MUST BE IN ACCORDANCE WITH THE DIMENSIONS AND TOLERANCES SPECIFIED IN THE DRAWINGS. DIMENSIONS DO NOT INCLUDE UNLESS OTHERWISE SPECIFIED.  
 REPAIR AND REWORK  
 APPROVED FOR FABRICATION  
 WITH NO CHANGES  
 WITH CHANGES AS NOTED  
 APPROVED BY: \_\_\_\_\_ DATE: \_\_\_\_\_

**NOTE:**  
 THE DOCUMENTATION CONTAINED ON THIS SHEET WAS NOT PREPARED BY HENDERSON ENGINEERS AND IS INCLUDED IN THIS SET FOR REFERENCE ONLY. HENDERSON ENGINEERS REVIEWED THE DOCUMENTATION ON THIS SHEET FOR GENERAL COMPLIANCE WITH DESIGN INTENT. SUPPLIER IS RESPONSIBLE THAT ALL FURNISHED EQUIPMENT ON THIS SHEET COMPLIES WITH APPLICABLE LOCAL, STATE, AND FEDERAL LAWS, CODES, AND REGULATIONS.

STORE NO:  
**CA #1399**

**SHAKE SHACK**  
 STONESTOWN GALLERIA  
 SAN FRANCISCO, CA

REVISION	
DATE	DESCRIPTION
12/20/21	PERMIT/IBID SET
02/10/22	REVISION A
04/26/22	REVISION B
05/27/22	REVISION C
06/24/22	IFC SET
08/03/22	REVISION 2

STATUS:  
**IFC SET**

FOR REFERENCE ONLY

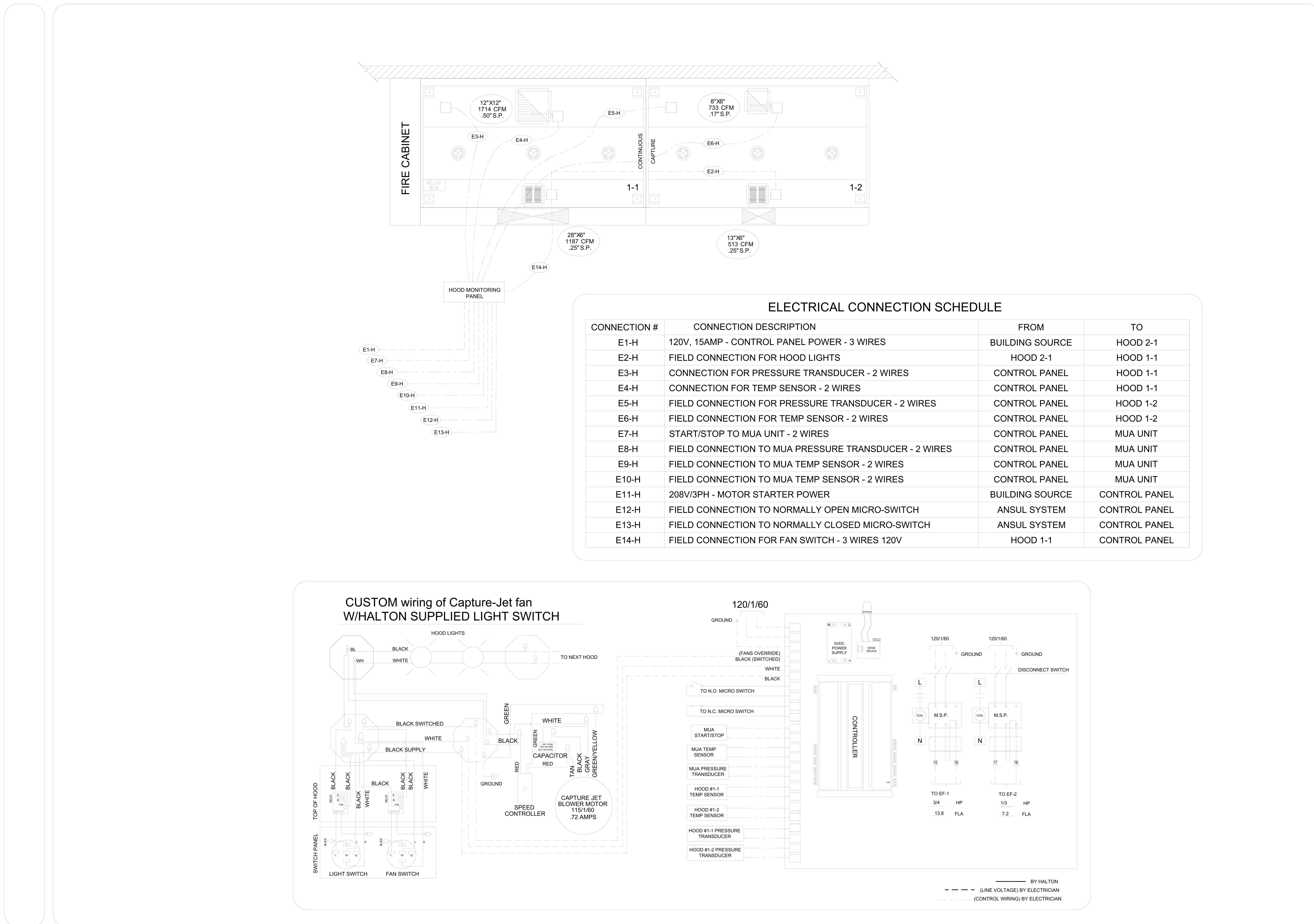
**FIELD VERIFICATION:**  
 The contractor shall verify all signed dimensions and condition at the project site and notify Zebra Projects, INC. of any dimensional errors, or omissions or discrepancies within 10 days of beginning of fabricating any work. Do not scale these drawings.

**COPYRIGHT © 2021:**  
 Zebra Projects, INC. shall retain all common law, statutory, and all other reserved rights. Neither the documents nor the information herein is to be reproduced, distributed, disclosed or otherwise used without the written consent of Zebra Projects, INC.

SHEET NAME:  
**HALTON DRAWINGS**

DATE: 12/18/20 PROJECT NO: 34285  
 DRAWN: SCALE: AS NOTED

SHEET NO:  
**M705**



THIS DRAWING MUST BE CHECKED, SIGNED AND RETURNED TO THE APPROPRIATE FACTORY. PLEASE REFER TO THE FOLLOWING:

1. THE MANUFACTURER'S INSTALLATION, MOUNTING POSITIONING AND CLEARANCE INFORMATION FOR ALL EQUIPMENT.  
 2. THE MANUFACTURER'S TYPE OF COORDINATE EQUIPMENT.  
 3. THE MANUFACTURER'S TYPE OF COORDINATE EQUIPMENT.  
 4. THE MANUFACTURER'S TYPE OF COORDINATE EQUIPMENT.  
 5. THE MANUFACTURER'S TYPE OF COORDINATE EQUIPMENT.  
 6. THE MANUFACTURER'S TYPE OF COORDINATE EQUIPMENT.  
 7. THE MANUFACTURER'S TYPE OF COORDINATE EQUIPMENT.

NOTE TO APPROVER:  
 ANY CHANGES IN COORDINATE EQUIPMENT SUCH AS INCREASED ENERGY INPUTS OR EQUIPMENT CHANGES OCCUR, A RE-CALCULATION OF THE AIR FLOW MAY BE REQUIRED.  
 RETIRE AND RESUBMIT  
 WITH NO CHANGES  
 WITH CHANGES AS NOTED

APPROVED FOR FABRICATION: \_\_\_\_\_ DATE: \_\_\_\_\_  
 APPROVED BY: \_\_\_\_\_ DATE: \_\_\_\_\_

WEBSITE: www.halton.com  
 HALTON CO. (USA)  
 101 INDUSTRIAL DRIVE  
 SCOTTSVILLE, KY 42164  
 1-270-537-8600

MAIL APPROVED DRAWINGS TO APPROPRIATE FACTORY BELOW:  
 HALTON CO. (CANADA)  
 1021 BREVIK PLACE  
 MISSISSAUGA, ON L4W 3R7  
 1-905-644-4651

REVISION DESCRIPTION: \_\_\_\_\_  
 REV. 1 NO CHANGE DATE: 12.07.21  
 REV. 2 \_\_\_\_\_  
 REV. 3 \_\_\_\_\_  
 REV. 4 \_\_\_\_\_  
 REV. 5 \_\_\_\_\_  
 REV. 6 \_\_\_\_\_  
 REV. 7 \_\_\_\_\_

PROJECT: **SHAKE SHACK**  
 LOCATION: SAN FRANCISCO, CA  
 DRAWN BY: SKM DATE: 11.22.21  
 SCALE: NOT TO SCALE  
 CONSULTANT: **Halton**

DRAWING TITLE: **DEMAND CONTROL DETAILS**  
 DRAWING No: **U21-814**  
 REV. NO.: 1 SHEET NO.: 5 of 5

**NOTE:**  
 THE DOCUMENTATION CONTAINED ON THIS SHEET WAS NOT PREPARED BY HENDERSON ENGINEERS AND IS INCLUDED IN THIS SET FOR REFERENCE ONLY. HENDERSON ENGINEERS REVIEWED THE DOCUMENTATION ON THIS SHEET FOR GENERAL COMPLIANCE WITH DESIGN INTENT. SUPPLIER IS RESPONSIBLE THAT ALL FURNISHED EQUIPMENT ON THIS SHEET COMPLIES WITH APPLICABLE LOCAL, STATE, AND FEDERAL LAWS, CODES, AND REGULATIONS.