



Chick-fil-A

Chick-fil-A
5200 Buffington Road
Atlanta, Georgia
30349-2998

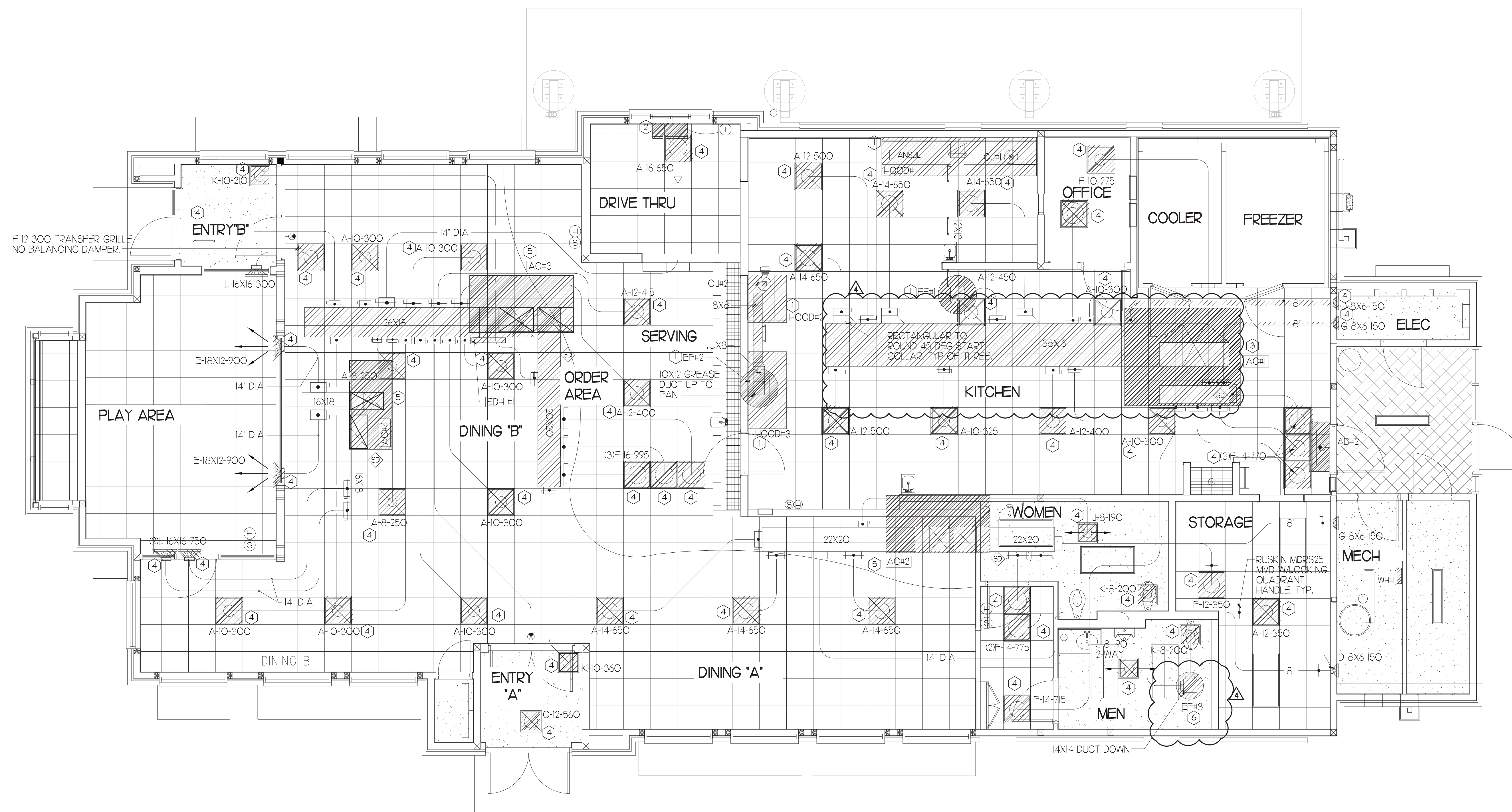
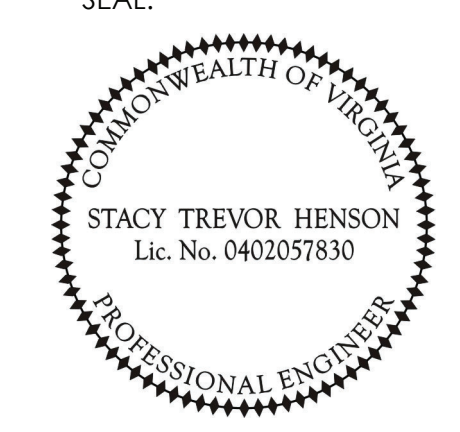
INTERPLAN

INTERPLAN LLC
AR0011595
CA 8660

ARCHITECTURE
ENGINEERING
PERMITTING

220 E. CENTRAL PKWY, STE 4000
ALFAMONTE SPRINGS, FL 32701
407.645.5038

SEAL:



MECHANICAL DEMOLITION PLAN

1/4" = 1'-0"

PROJECT NORTH TRUE NORTH

DEMOLITION LEGEND

	EXISTING EQUIPMENT, DUCT, AIR DEVICES ETC. TO REMAIN INTACT.
	EXISTING EQUIPMENT, DUCT, AIR DEVICES ETC. TO BE DEMOLISHED.

LEGEND

SYMBOL	DESCRIPTION	SYMBOL	DESCRIPTION
A-12-400	TYPE - NECK SIZE - CFM	EF#1	EXHAUST FAN #1 (TYP)
	SPIN-IN FITTING WITH MANUAL BALANCING DAMPER, WITHOUT SCOOP	ACH#1	AIR CONDITIONING UNIT #1 (TYP)
	SPIN-IN HARD O FLEXIBLE O DIFFUSER		RETURN/EXHAUST (TYP)
	EXISTING EQUIPMENT, DUCT, & AIR DEVICE		SUPPLY DIFFUSER, SQ FACE (TYP)
	NEW EQUIPMENT, DUCT, & AIR DEVICE	①	PLAN NOTE REFERENCE
	REMOTE TEMPERATURE SENSOR		MANUAL VOLUME DAMPER
	HUMIDITY SENSOR		DIRECTION OF THROW ON DIFFUSER
	STROBE AUDIO/VISUAL ALARM-ANNUNCIATOR		CO2 SENSOR
	DUCT SIZE (REVERSE FOR ELEVATION VIEWS) 1ST NUMBER - HORIZONTAL DIMENSION 2ND NUMBER - VERTICAL DIMENSION		FULL STATION
	POINT OF DISCONNECTION		CONTROL PANEL
	POINT OF CONNECTION		SMOKE DETECTOR
	INDICATES 2-WAY DIFFUSER. INDICATES BLANKED OFF SIDE		

- ### DEMOLITION NOTES
- CONTRACTOR IS RESPONSIBLE FOR OBTAINING ALL NECESSARY PERMITS AND PAYING ALL APPLICABLE FEES.
 - DISPOSAL OF EQUIPMENT AND MATERIALS REQUIRED TO BE REMOVED SHALL BE THE RESPONSIBILITY OF THE CONTRACTOR PERFORMING THE WORK.
 - DE-ENERGIZE ALL ELECTRICAL CIRCUITS RELATED TO EQUIPMENT THAT WILL BE MOVED OR REMOVE PRIOR TO STARTING WORK. DE-ENERGIZE CIRCUITS SHALL BE PROTECTED WITH LOCKING DEVICES USING APPROPRIATE WARNING LABELS.
 - MECHANICAL CONTRACTOR SHALL BE RESPONSIBLE FOR PATCHING ROOF AFTER REMOVAL OF EXISTING MECHANICAL EQUIPMENT. SEE ARCHITECTURAL DRAWINGS FOR ROOF PATCHING REQUIREMENTS.
 - EXCEPT WHERE NOTED, EXISTING REMOTE TEMPERATURE AND/OR HUMIDITY SENSORS TO REMAIN. IF DURING RENOVATION PURPOSES CONTROLS SHALL BE TAKEN DOWN. MECHANICAL CONTRACTOR SHALL BE RESPONSIBLE FOR REINSTALLING AND TO PROVIDE ANY ADDITIONAL WIRING NEEDED.
 - MECHANICAL CONTRACTOR SHALL PERFORM ROUTINE MAINTENANCE ON EXISTING ROOFTOP UNITS AND MAKE ANY NECESSARY REFRIGERANT WITH NO LEAKS, NEW BELTS AND REPLACE AND FAN MOTORS NECESSARY.
 - DISCONNECT GAS PIPING FROM EXISTING ROOFTOP UNITS) TO BE REPLACED. PLUMBING CONTRACTOR WILL REMOVE EXISTING GAS PIPING TO BE DEMOLISHED.
 - CONTRACTOR SHALL INDICATE SALVAGE VALUE IN BID FOR ROOFTOP UNITS BEING REPLACED.

- ### DEMOLITION KEY NOTES
- DEMOLISH EXISTING KITCHEN HOOD, ALL ASSOCIATED GREASE DUCT, AND EXHAUST FAN ON ROOF. EXISTING EXHAUST FAN TO BE REPLACED. TURN OVER EXISTING EXHAUST FAN TO OWNER. COVER ROOF OPENING WEATHER-TIGHT FOR RE-USE. REFER TO SHEET MJI & M3I FOR FURTHER INFORMATION.
 - EXISTING AIR CURTAIN TO BE REPLACED WITH NEW ADHI. REFER TO MJI AND M3I.
 - EXISTING KITCHEN A/C UNIT TO DEMOLISHED. SEE SHEETS MJI AND M3I FOR FURTHER INFORMATION.
 - DETACH AND DEMOLISH EXISTING AIR DEVICE SEE SHEET MJI FOR NEW AIR DEVICE LOCATIONS.
 - EXISTING ROOFTOP UNIT TO BE REPLACED WITH NEW AS SCHEDULED ON SHEET M3I. SEE SHEETS MJI AND M3I FOR FURTHER INFORMATION.
 - EXISTING RESTROOM EXHAUST FAN TO BE REPLACED. TURN OVER EXISTING EXHAUST FAN TO OWNER. COVER ROOF OPENING WEATHER-TIGHT FOR RE-USE. REFER TO SHEET MJI AND M3I FOR FURTHER INFORMATION.

FIELD VERIFY ALL CONDITIONS

NOTE: AS NOTED IN THE SPECIFICATIONS, ALL WIRING LAYOUTS, PIPING LAYOUTS AND DUCT LAYOUTS ARE SCHEMATIC. EXACT LOCATIONS SHALL BE DETERMINED BY THE CONTRACTOR AND STRUCTURE OF THE BUILDING AND SHALL BE VERIFIED AND COORDINATED IN THE FIELD. EACH TRADE CONTRACTOR SHALL VERIFY WITH THE GENERAL CONTRACTOR THAT HE HAS THOROUGHLY REVIEWED AND COORDINATED ALL LOCATIONS AND ROUTINGS WITH ALL OTHER TRADES PRIOR TO FABRICATION OF CONDUITS, DUCTS, OR PIPING, AND START OF INSTALLATION OF SAME (INCLUDING SPRINKLER PIPING WHEN PRESENT ON JOB). ANY INSTALLATION OR CONSTRUCTION CONFLICTS WHICH OCCUR IN THE FIELD SHALL BE RESOLVED BY THE TRADE CONTRACTOR TO THE SATISFACTION OF THE OWNER AND ARCHITECT AND AT NO EXPENSE TO THE OWNER, ARCHITECT AND/OR GENERAL CONTRACTOR.

THE CONTRACTOR SHALL CONTACT THE ARCHITECT, ENGINEER OR OWNER PRIOR TO BIDDING FOR INTERPRETATIONS AND CLARIFICATIONS OF THE DESIGN AND INCLUDE IN HIS BID ALL COSTS TO MEET THE DESIGN INTENT. CLARIFICATIONS MADE BY THE ARCHITECT, ENGINEER OR OWNER AFTER BIDDING WILL BE FINAL AND SHALL BE IMPLEMENTED AT CONTRACTORS COST.

BIDDING CONTRACTORS SHALL HAVE A WORKING KNOWLEDGE OF LOCAL CODES AND ORDINANCES AND SHALL INCLUDE IN THEIR BIDS THE COSTS FOR ALL WORK INSTALLED IN STRICT ACCORDANCE WITH GOVERNING CODES, THE PLANS AND SPECIFICATIONS NOT WITHSTANDING. THE CONTRACTOR SHALL ALERT ARCHITECT, ENGINEER OR OWNER OF ANY APPARENT DISCREPANCIES BETWEEN GOVERNING CODES AND DESIGN INTENT.

CHICK-FIL-A

Parham Road
1529 N. Parham Road,
Richmond, VA 23229

FSR#02554

BUILDING TYPE / SIZE: S08-E
RELEASE: 08/24/2022
PRINTED FOR: CONSTRUCTION

REVISION SCHEDULE

NO.	DATE	DESCRIPTION
4	01/25/2023	REQ SHOW UPDATES

CONSULTANT PROJECT # 2020.0750
DATE 08/24/22
DRAWN BY AM
CHECKED BY DAK
Information contained on this drawing and all digital files produced for above named project may not be reproduced or modified without express written or verbal consent from the project manager.

SHEET MECHANICAL DEMO PLAN
SHEET NUMBER
M1.0

GAS FIRED ROOFTOP UNIT SCHEDULE

MARK	TONNAGE	AREA SERVED	COOLING CAPACITY (MBH)		HEATING CAPACITY (MBH)		FAN SECTION (CFM)		EXISTING MANUFACTURER/ MODEL	NEW MANUFACTURER/ MODEL	ARI RATINGS	PERCENTAGE OF OUTDOOR AIR	ELECTRICAL DATA		REMARKS	APPROX NET WEIGHT INCLUDING OPTIONS	
			TOTAL	SENS	INPUT	SURFACE	STAGES	SUPPLY					HP	PSR			LO
NEW ACH	25	KITCHEN	2945	2868	4800	3840	2	8,750	1750	10	10	10	10	142	150	13,447,819,012,214	297 LBS
NEW ACH2	65	DINING A	1038	787	2400	1920	2	3,300	700	2	28	28	28	142	150	24,678,910,121,214	1,430 LBS
NEW ACH3	20	DINING B	238.0	173.7	360.0	288.0	2	640.0	1300	7.5	85	85	85	142	150	24,678,910,121,214	2,810 LBS
NEW ACH4	5	PLAYGROUND	63.3	47.5	150.0	120.0	2	1,800	400	1	65	65	65	142	150	24,678,910,121,214,15	859 LBS
NEW ACH5	3	MULTI-PURPOSE	35.8	27.6	65.0	52.0	1	1,000	170	5	65	65	65	142	150	23,467,819,012,131,415	796 LBS

ALL NEW ROOFTOP UNITS SHALL INCLUDE A HUMIDITY CONTROL OPTION WITH FACTORY WALL MOUNTED HUMIDITY SENSOR.

- PROVIDE DIFFERENTIAL ENTHALPY ECONOMIZER WITH POWER EXHAUST.
- PROVIDE DIFFERENTIAL ENTHALPY ECONOMIZER WITH BAROMETRIC EXHAUST.
- PROVIDE NEW 1/4" HSI ROOF CURB.
- SEE DETAIL M42 FOR SETTING OF PRODIGY MG AND M-8 IMC BOARD CONTROL/CONTROL PARAMETERS BY MC.
- PROVIDE FACTORY INSTALLED AND UNIT POWERED 16V GFI SERVICE OUTLET.
- PROVIDE FACTORY INSTALLED 16V GFI SERVICE OUTLET.
- PROVIDE FACTORY INSTALLED RETURN AND SUPPLY SIDE SMOKE DETECTOR.
- PROVIDE FACTORY INSTALLED NON-FUSED DISCONNECT.
- PROVIDE 7" MEV & THROW AWAY FILTERS.
- PROVIDE HINGED PANELS FOR FILTER ACCESS, FAN MOTOR ACCESS, COMPRESSOR ACCESS AND CONTROL COMPARTMENT ACCESS.
- ADJUST GAS MANIFOLD PRESSURE AT LOCATIONS WHERE ELEVATION EXCEEDS 2000' ABOVE SEA LEVEL AS RECOMMENDED BY MANUFACTURER.
- PROVIDE FACTORY COIL HALL GUARD, FIELD INSTALLED.
- PROVIDE UNIT WITH HEAVY BLOWER.
- PROVIDE HUMIDITY CONTROL OPTION WITH FACTORY WALL MOUNTED HUMIDITY SENSOR (STATES OF CA AND AZ EXCLUDED).
- PROVIDE FACTORY INSTALLED BELT TENSIONER.
- REPLACE EXISTING LENNOX ROOFTOP UNIT WITH NEW SAME SIZE WITH THE SAME MANUFACTURER LENNOX PLACED ON SAME LOCATION ON EXISTING CURB.
- EXISTING UNIT TO REMAIN.

CONTRACTOR SHALL VERIFY EXACT ELECTRICAL CONNECTIONS, WIRE SIZES, BREAKERS, DISCONNECT, ETC. FOR THE NEW ROOFTOP UNITS PRIOR TO ORDERING AND BID.

TEST AND BALANCE REPORT SHALL BE DONE PRIOR TO STORE TURNOVER AND SUBMITTED TO CFA'S CONSTRUCTION MANAGER AND TO ENGINEER OF RECORD.

NEW HVAC EQUIPMENTS SHALL BE INSTALLED IN ACCORDANCE WITH THE MANUFACTURER'S INSTALLATION INSTRUCTIONS INCLUDING CLEARANCES, & SHALL MEET ALL LOCAL AND STATE CODE REQUIREMENTS. INSTRUCTIONS SHALL BE ON SITE AND AVAILABLE FOR ALL INSPECTIONS, SERVICE, REPAIR, OR REPLACEMENT.

NEW ROOFTOP UNITS ONLY, MECHANICAL CONTRACTOR SHALL RELOCATE THE FACTORY INSTALLED SUPPLY SIDE SMOKE DETECTOR FROM THE BLOWER SECTION TO THE SUPPLY DUCT DROP ABOVE THE FIRST 90 DEGREE DUCT FITTING.

NEW ROOFTOP UNITS ONLY, THE MECHANICAL CONTRACTOR SHALL SPLICE NEW PLENUM RATED CABLE BETWEEN THE FACTORY SMOKE DETECTOR AND THE FACTORY JACK PLUG. THE NEW WIRING SHALL BE ROUTED THRU THE ROOFTOP UNIT BASEPANEL RACEWAY. SPLICES SHALL BE JOINED WITH CRIMP ON FITTINGS AND HEAT SHRINK JACKETS.

OUTDOOR AIR CALCULATION

ROOM NUMBER & NAME	AREA SQ. FT.	NO. OF PEOPLE	REQD OA CFM/PERSON	REQD OA CFM/SQ FT	TOTAL OSA	REQD EXHAUST AIR PER FIXTURE	REQD OSA AC-1	REQD OSA AC-2	REQD OSA AC-3	REQD OSA AC-4	REQD OSA AC-5
KITCHEN	1267	25	7.50	0.12	339.5		339.5				
STORAGE	12	0	5.00	0.06	0.7				0.7		
RR VESTIBULE	75	0	5.00	0.06	4.5				4.5		
MENS RR	91	0	0.00	0.00	0.0	50/70					
WOMENS RR	106	0	0.00	0.00	0.0	50/70					
DINING A	224	16	7.50	0.18	160.3				160.3		
MECH ROOM	23	0	0.00	0.00	0.0						
DRIVE THRU	334	2	7.50	0.18	75.1				75.1		
SERVING AREA	157	4	7.50	0.18	58.3				58.3		
WAITING AREA	292	0	5.00	0.06	17.5				17.5		
N AND S DINING B	864	68	7.50	0.18	665.5				665.5		
ENTRY 'A'	46	0	5.00	0.06	28				28		
ENTRY 'B'	68	0	5.00	0.06	41				29		
W. DINING B	287	20	7.50	0.18	201.7					201.7	
MULTI-PURPOSE	252	0	5.00	0.06	15.1						47.7
OFFICE	54	1	5.00	0.06	8.2						8.2
TOTALS						100/140	339.50	165.50	822.0	201.70	55.9
							424.38	206.88	1027.63	252.13	69.9
							1,750	700	1,300	400	170

OUTSIDE AIR BASED ON THE 2018 INTERNATIONAL MECHANICAL CODE & PER ASHRAE 62.1-2018 MINIMUM VENTILATION RATES. ZONE AIR DISTRIBUTION EFFECTIVENESS BASED OFF 2018 INTERNATIONAL MECHANICAL CODE TABLE 403.3.11.2.

AIR DOOR SCHEDULE

MARK	CFM	VELOCITY	HEATING CAP	HP	AREA SERVED	MODEL	MANUFACTURER	REMARKS
AD1	1765	3670 FPM	10 KW	3/4	DRIVE THRU	CH4-H48E	POWERED-AIRE	1235
AD2	3267	428	NA	3/4	REAR DOOR	DBT-H-48	POWERED-AIRE	4
AD3	1977	3445 FPM	10 KW	3/4	DRIVE THRU	CH4-H36E	POWERED-AIRE	123

NOTES: CHICK-FIL-A HAS A NATIONAL ACCOUNT WITH TOM BARRON COMPANY FOR THE AIR DOORS. THE MECHANICAL CONTRACTOR SHALL PURCHASE THE AIR DOORS DIRECTLY FROM TOM BARRON COMPANY. CONTACT MR. SCOTT GEORGE AT 404-391-0100 FOR PRICING AND AVAILABILITY. AIR DOORS NOT PURCHASED THRU TOM BARRON COMPANY WILL NOT BE ACCEPTED.

REMARKS: 1. FACTORY PROVIDED, WIRED, AND UNIT MOUNTED SPEED CONTROLLER LOCATED ABOVE CEILING. 2. FACTORY WIRED DISCONNECT. 3. FACTORY PROVIDED FIELD INSTALLED BY MC. REMOTE W ALL SWITCHES FOR HEATING ON/OFF AND FAN ON/OFF SWITCH. SEE DETAIL, AIR CURTAIN WIRING DIAGRAM. 4. FACTORY PROVIDED MAGNETIC DOOR CONTACT WITH FACTORY INSTALLED LOW VOLTAGE CONTROLS LOCATED IN AIR DOOR CABINET. 5. PROVIDE WITH A DIVERSTER BOX.

EXHAUST FAN SCHEDULE

MARK	CFM	ESP	RPM	TP SPEED (FFS)	HP	AREA SERVED	MODEL	MANUFACTURER	REMARKS
NEW EF#1	193	.65	964	4364	1/2	HOOD#1	16V5B	LOREN COOK	12,3,4,5,6
NEW EF#2	701	.75	1238	4558	1/2	HOOD#2	16V6FRB	LOREN COOK	12,3,4,5,6
NEW EF#3	400	.375	1294	3,071	1/8	RESTROOMS	ACED-9003	LOREN COOK	2,7,8,9,10,11
NEW EF#4	701	.75	1298	4681	1/2	HOOD#3	16V6FRB	LOREN COOK	12,3,4,5,6

NOTES: GREASE EXHAUST FAN RPM BASED ON 80 DEGREE F AIR AT 1000 FEET ABOVE SEA LEVEL. GREASE EXHAUST FANS TO BE UL LISTED. CHICK-FIL-A HAS A NATIONAL ACCOUNT WITH TOM BARRON COMPANY FOR THE FAN/CURB PACKAGE. THE MECHANICAL CONTRACTOR IS REQUIRED TO PURCHASE THE FAN/CURB PACKAGE DIRECTLY FROM TOM BARRON COMPANY. CONTACT MR. SCOTT GEORGE AT 404-391-0100 FOR PRICING AND AVAILABILITY. FANS AND CURBS NOT PURCHASED THRU TOM BARRON COMPANY WILL NOT BE ACCEPTED.

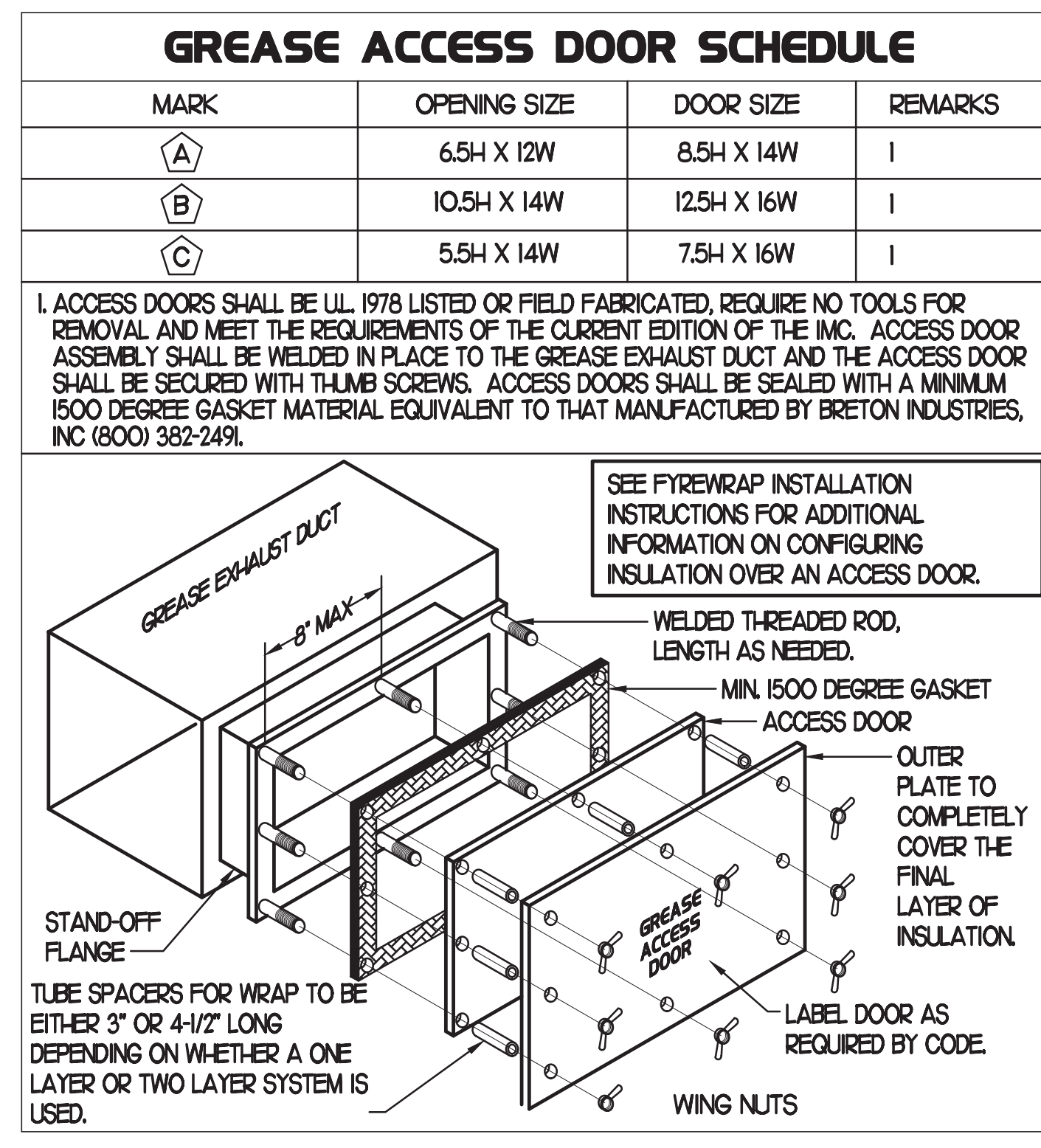
REMARKS: 1. PROVIDE FACTORY 1'-0" BASE CURB AND EXTENSION. 2. PROVIDE FACTORY INSTALLED, PRE-WIRED, NEMA 3 NON-FUSED DISCONNECT. 3. PROVIDE FACTORY INSTALLED HINGED BASE KIT. 4. PROVIDE AND INSTALL ROOFTOP SOLUTIONS 62 DWP GUARD. MECHANICAL CONTRACTOR TO CONTACT ROOFTOP SOLUTIONS AT 800-933-7034. 5. PROVIDE FACTORY INSTALLED HELICAL SPRING AUTOMATIC BELT TENSIONER. 6. INTEGRAL THERMAL OVERLOAD WITH AUTOMATIC RESET. 7. PROVIDE BROSSCREEN. 8. BACKDRAFT DAMPER IN DUCT BY MECHANICAL CONTRACTOR. 9. STARTER BY ELECTRICAL CONTRACTOR. INTERLOCK WITH LIGHTS BY ELECTRICAL CONTRACTOR. 10. PROVIDE FACTORY INSTALLED AND WIRED SPEED CONTROLLER. 11. MOUNT TO EXISTING CURB. FIELD VERIFY CONDITION OF CURB PRIOR TO INSTALLATION.

AIR DEVICE SCHEDULE

MARK	DESCRIPTION	LOCATION	NECK SIZE	FACE SIZE	FRAME TYPE	REMARKS
A	PRICE MODEL APDC ALUMINUM SUPPLY AIR DIFFUSER WITH INDIVIDUALLY ADJUSTABLE CURVED AIR PATTERN CONTROLLERS.	DINING AREA KITCHEN	VARIES	24X24	LAY-IN	17
C	PRICE MODEL 80 EGGRATE RETURN AIR GRILLE WITH ADJUSTABLE AIR PATTERN CONTROLLERS.	ENTRYS	14X14	19X19	BEVELLED	13,5,6
E	PRICE MODEL 22 DOUBLE DEFLECTION ALUMINUM SIDEWALL SUPPLY GRILLE FRONT BLADE PARALLEL TO LONG SIDE.	UTILITY	18X10	20X12	SURFACE	1
F	PRICE MODEL 80 EGGRATE RETURN AIR GRILLE WITH REMOVABLE WHITE CORE, FACTORY FLAT BLACK BACKPAN AND ROUND NECK.	DINING/OFFICE KITCHEN	SEE PLAN	24X24	LAY-IN	17
H	PRICE MODEL APDC ALUMINUM SUPPLY AIR DIFFUSER WITH INDIVIDUALLY ADJUSTABLE CURVED AIR PATTERN CONTROLLERS.	OFFICE	12X12	24X24	LAY-IN	16,7
J	PRICE MODEL 80 EGGRATE RETURN AIR GRILLE WITH ADJUSTABLE AIR PATTERN CONTROLLERS.	RESTROOMS	10X10	15X15	BEVELLED	12,3,5,6
K	PRICE MODEL APDC ALUMINUM PERFORATED FACE RETURN AIR GRILLE.	RESTROOMS ENTRYS	14X14	16X16	SURFACE	14,5,6
L	PRICE MODEL 21 ALUMINUM SIDEWALL RETURN GRILLE, FRONT BLADE PARALLEL TO LONG SIDE.	UTILITY	12X12	14X14	SURFACE	1

NOTES: MECHANICAL CONTRACTOR SHALL PURCHASE THE AIR DEVICES DIRECTLY FROM TOM BARRON COMPANY. CONTACT MR. SCOTT GEORGE AT 404-391-0100, FOR PRICING AND AVAILABILITY. AIR DEVICES NOT PURCHASED THRU TOM BARRON COMPANY WILL NOT BE ACCEPTED.

REMARKS: 1. STANDARD OFF WHITE FINISH. 2. PROVIDE MODEL VCS3 NECK DAMPER. 3. SEE DRAWING M11 FOR THROW. 4. PROVIDE MODEL VCR7 NECK DAMPER ON GRILLES IN RESTROOMS. 5. PROVIDE BACKPAN MC TO SEAL JOINTS WITH Mastic AND INSULATE EXTERNALLY. 6. FIELD INSULATE BACKPAN AS SHOWN ON DETAIL IM-1. 7. FACTORY INSULATED R-6 BACKPAN.



KITCHEN PRESSURIZATION

RETURN AIR FROM SIDE DINING BACK TO KITCHEN	-700
EXISTING AC-1 OA (25 TON)-215 OA	+1750
NEW EF-1 KITCHEN HOOD	-193
NEW EF-2 KITCHEN HOOD	-701
NEW EF-4 KITCHEN HOOD	-701
TOTAL	-865

DINING PRESSURIZATION

NEW AC-2 OA (65 TON)-2125 OA	+700
NEW AC-3 OA (20 TON)-2031 OA	+1300
NEW AC-4 OA (5 TON)-2225 OA	+400
NEW AC-5 OA (3 TON)-1555 OA	+170
EXISTING EF-3 RESTROOM EXHAUST	-400
RETURN AIR FROM SIDE DINING BACK TO KITCHEN	-700
BUILDING POSITIVE PRESSURE TOTAL	+1470
BUILDING POSITIVE PRESSURE	+605



Chick-fil-A
5200 Buffington Road
Atlanta, Georgia
30349-2998

INTERPLAN
INTERPLAN LLC
AR0011595
CA 8660

ARCHITECTURE
ENGINEERING
PERMITTING

220 E. CENTRAL PKWY, STE 4000
ALAMONTA SPRINGS, FL 32701
407.645.5038



CHICK-FIL-A

Parham Road,
1529 N. Parham Road,
Richmond, VA 23229

FSR#02554

BUILDING TYPE / SIZE: S08-E
RELEASE: 08/24/2022
PRINTED FOR: CONSTRUCTION

REVISION SCHEDULE

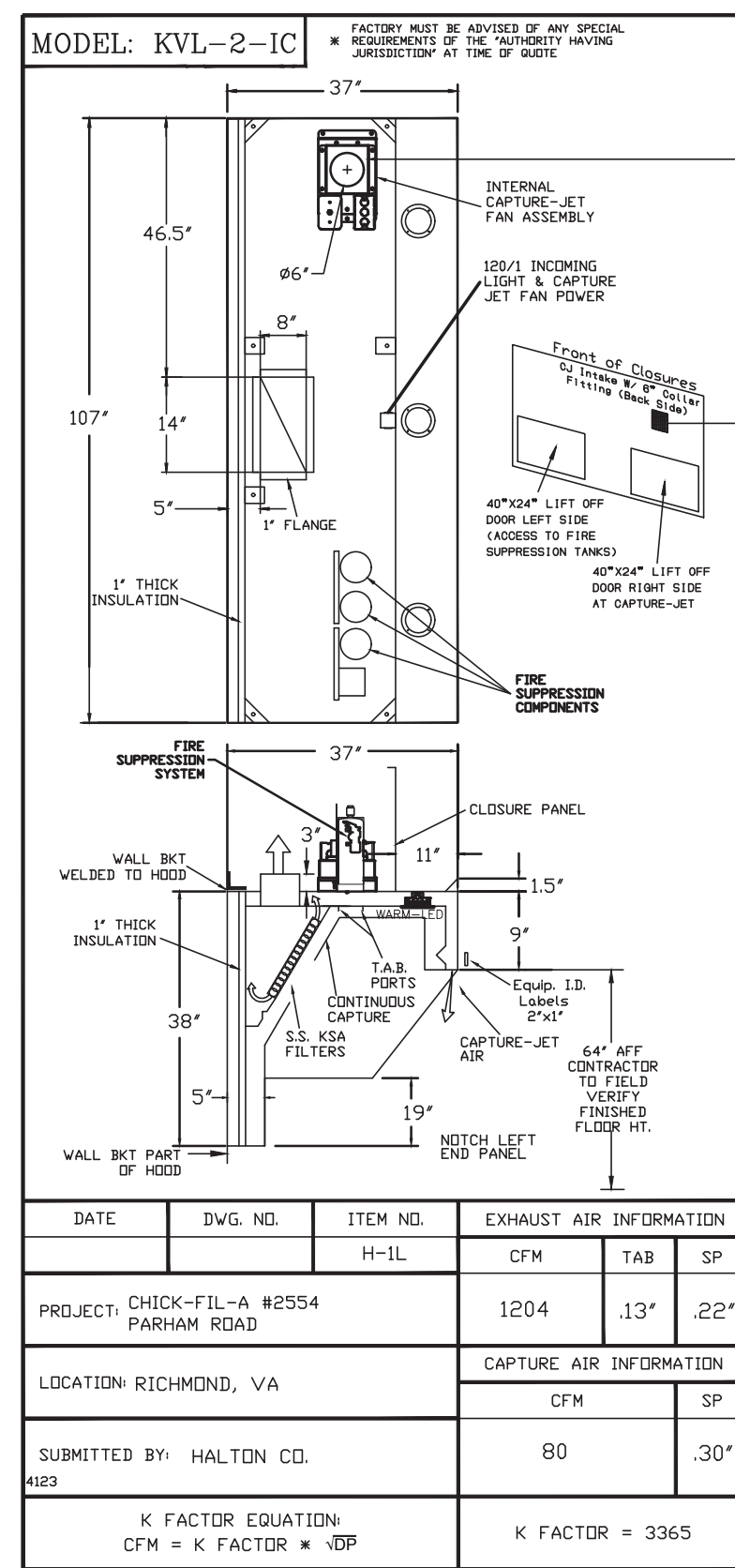
NO.	DATE	DESCRIPTION
1	01/25/2021	FEEDBACK REVISIONS
17	08/24/2022	RD COMMENTS

CONSULTANT PROJECT #: 2020.0759
DATE: 08/24/22
DRAWN BY: AM
CHECKED BY: DAK

Information contained on this drawing and all digital files produced for above named project may not be reproduced or transmitted in any form or by any means without express written or verbal consent from the project representative.

SHEET: MECHANICAL SCHEDULES

SHEET NUMBER
M3.1



STANDARD FEATURES	
S.S. FILTERS (KSA)	3
1/2" S.S. FILTERS (KSA)	1
CAPTURE-JET	*
STAND-OFF	*
L.E.D. LIGHTS	3

OPTIONS	
REMOTE SWITCH PANEL	*
FIRE PROTECTION	*
ETL LISTED V/D EXHAUST DAMPER	*
CEILING CLOSURE	2
STD. BACKSPLASH	2
INSULATED BACKSPLASH	*
KBD DAMPER	*

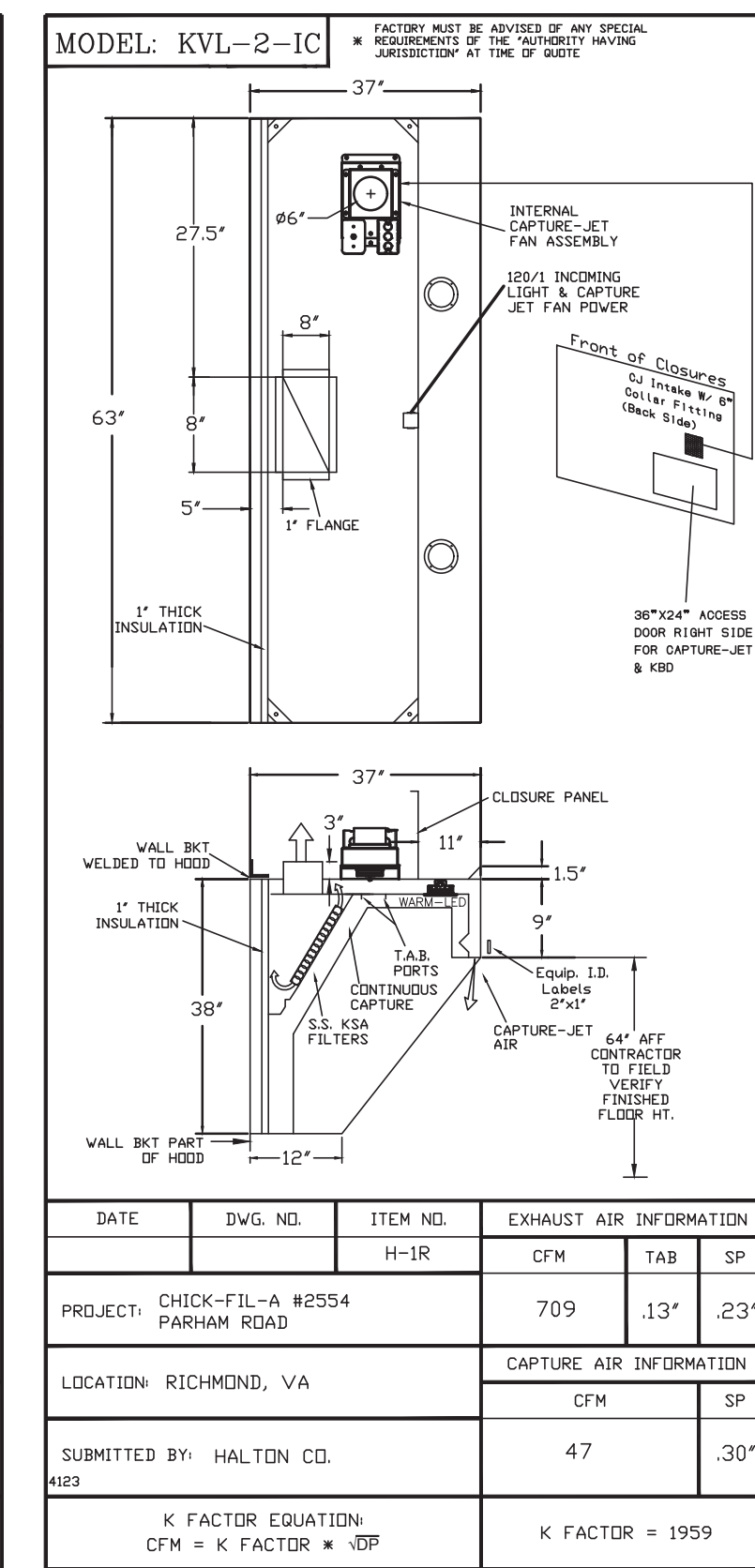
MATERIAL	
EXPOSED SURFACES 18 GA. S.S.	*
ALL 18 GA. S.S.	*

COMMENTS	
CLOSURE HEIGHT = 780 (TWO SIDES)	
CEILING CLOSURE RECESSED 1" FROM FRONT TO CREATE SHELF	
FRONT CLOSURE PANEL WITH 40"x24" LIFT OUT DOOR LEFT SIDE (ACCESS TO FIRE SUPPRESSION)	
40"x24" LIFT OUT DOOR RIGHT SIDE AT CAPTURE-JET WITH FRONT GJ INTAKE	
CONTINUOUS CAPTURE INTERNAL RIGHT END OUTPUT	
3" REAR STAND-OFF TO HAVE 1" THICK INSULATION	
NOTCHED LEFT END PANEL	

DATE	DWG. NO.	ITEM NO.	EXHAUST AIR INFORMATION
		H-1L	CFM TAB SP
			1204 13' 22'

PROJECT	LOCATION	CAPTURE AIR INFORMATION
CHICK-FIL-A #2554 PARHAM ROAD	RICHMOND, VA	CFM SP
		80 30'

K FACTOR EQUATION: CFM = K FACTOR * JBP
K FACTOR = 3365



STANDARD FEATURES	
S.S. FILTERS (KSA)	3
1/2" S.S. FILTERS (KSA)	1
CAPTURE-JET	*
STAND-OFF	*
L.E.D. LIGHTS	2

OPTIONS	
REMOTE SWITCH PANEL	*
FIRE PROTECTION	*
ETL LISTED V/D EXHAUST DAMPER	*
CEILING CLOSURE	2
STD. BACKSPLASH	2
INSULATED BACKSPLASH	*
KBD DAMPER	*

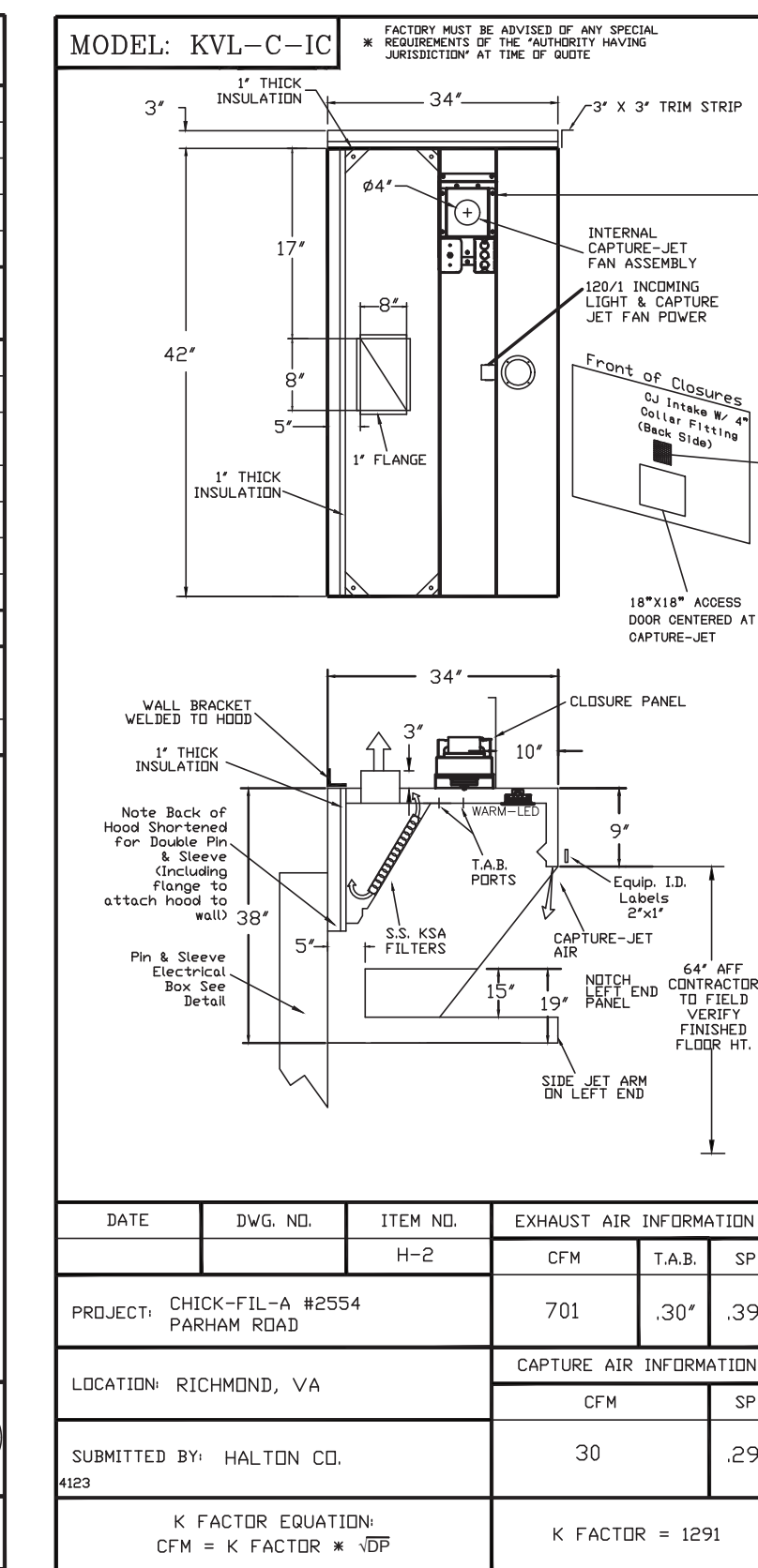
MATERIAL	
EXPOSED SURFACES 18 GA. S.S.	*
ALL 18 GA. S.S.	*

COMMENTS	
CLOSURE HEIGHT = 780 (TWO SIDES)	
CEILING HEIGHT = ADVISE CEILING CLOSURE RECESSED 1" FROM FRONT TO CREATE SHELF	
30"x24" ACCESS DOOR RIGHT SIDE FOR ACCESS TO CAPTURE-JET WITH FRONT GJ INTAKE & KBD	
CONTINUOUS CAPTURE INTERNAL LEFT END OUTPUT	
3" REAR STAND-OFF TO HAVE 1" THICK INSULATION	
EQUIPMENT COVERED	133 PRESSURE FRIGERS

DATE	DWG. NO.	ITEM NO.	EXHAUST AIR INFORMATION
		H-1R	CFM TAB SP
			709 13' 23'

PROJECT	LOCATION	CAPTURE AIR INFORMATION
CHICK-FIL-A #2554 PARHAM ROAD	RICHMOND, VA	CFM SP
		47 30'

K FACTOR EQUATION: CFM = K FACTOR * JBP
K FACTOR = 1959



STANDARD FEATURES	
S.S. FILTERS (KSA)	2
1/2" S.S. FILTERS (KSA)	1
CAPTURE-JET	*
STAND-OFF	*
L.E.D. LIGHTS	1

OPTIONS	
REMOTE SWITCH PANEL	*
FIRE PROTECTION	*
ETL LISTED V/D EXHAUST DAMPER	*
CEILING CLOSURE	2
STD. BACKSPLASH	2
INSULATED BACKSPLASH	*
KBD DAMPER	*

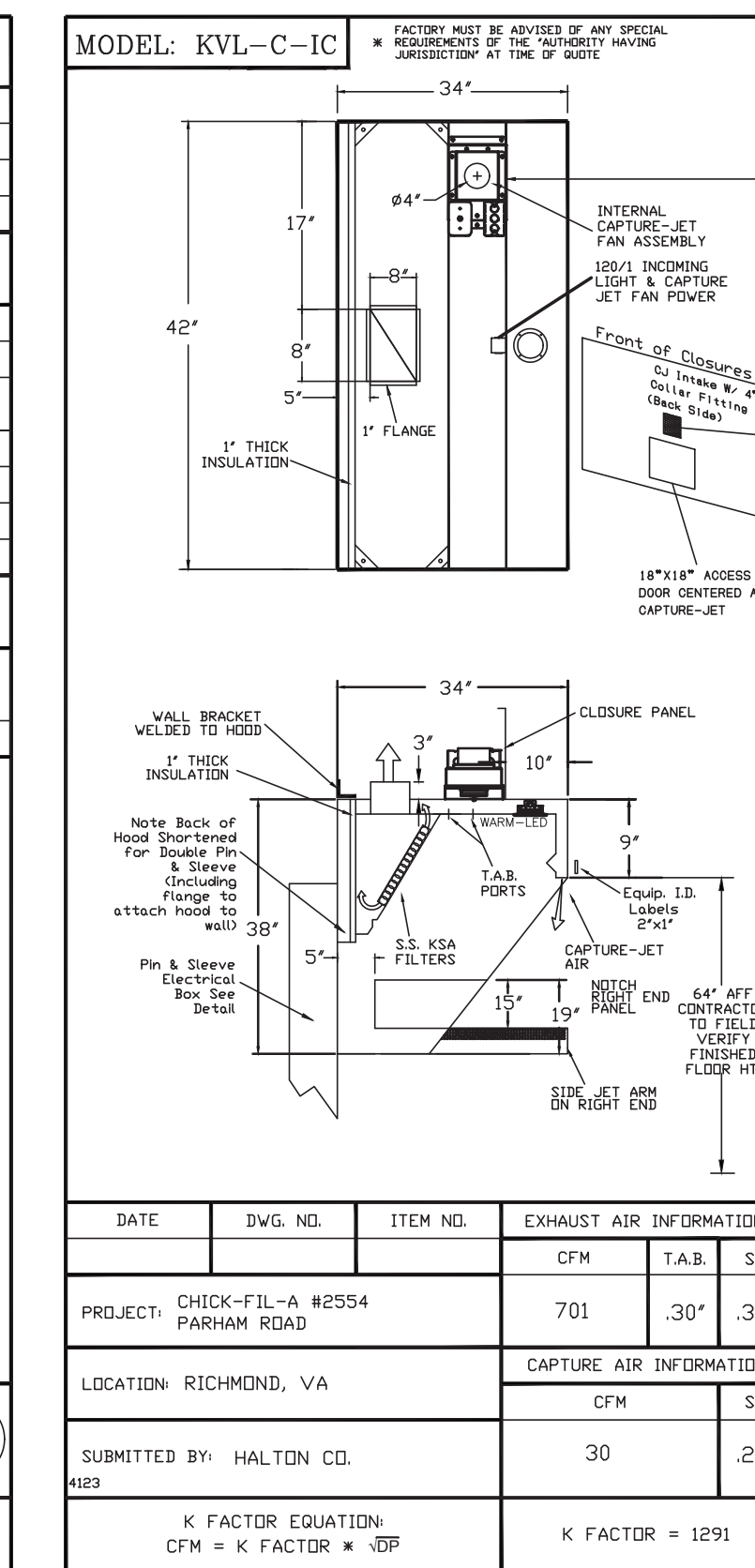
MATERIAL	
EXPOSED SURFACES 18 GA. S.S.	*
ALL 18 GA. S.S.	*

COMMENTS	
CLOSURE HEIGHT = 780 (TWO SIDES)	
CEILING HEIGHT = ADVISE CEILING CLOSURE RECESSED 1" FROM FRONT TO CREATE SHELF	
30"x24" ACCESS DOOR RIGHT SIDE FOR ACCESS TO CAPTURE-JET WITH FRONT GJ INTAKE	
CONTINUOUS CAPTURE INTERNAL LEFT END OUTPUT	
3" REAR STAND-OFF TO HAVE 1" THICK INSULATION	
EQUIPMENT COVERED	23 PRESSURE FRIGERS

DATE	DWG. NO.	ITEM NO.	EXHAUST AIR INFORMATION
		H-2	CFM TAB SP
			701 30' 39'

PROJECT	LOCATION	CAPTURE AIR INFORMATION
CHICK-FIL-A #2554 PARHAM ROAD	RICHMOND, VA	CFM SP
		30 29'

K FACTOR EQUATION: CFM = K FACTOR * JBP
K FACTOR = 1291



STANDARD FEATURES	
S.S. FILTERS (KSA)	2
1/2" S.S. FILTERS (KSA)	1
CAPTURE-JET	*
STAND-OFF	*
L.E.D. LIGHTS	1

OPTIONS	
REMOTE SWITCH PANEL	*
FIRE PROTECTION	*
ETL LISTED V/D EXHAUST DAMPER	*
CEILING CLOSURE	3
STD. BACKSPLASH	2
INSULATED BACKSPLASH	*
KBD DAMPER	*

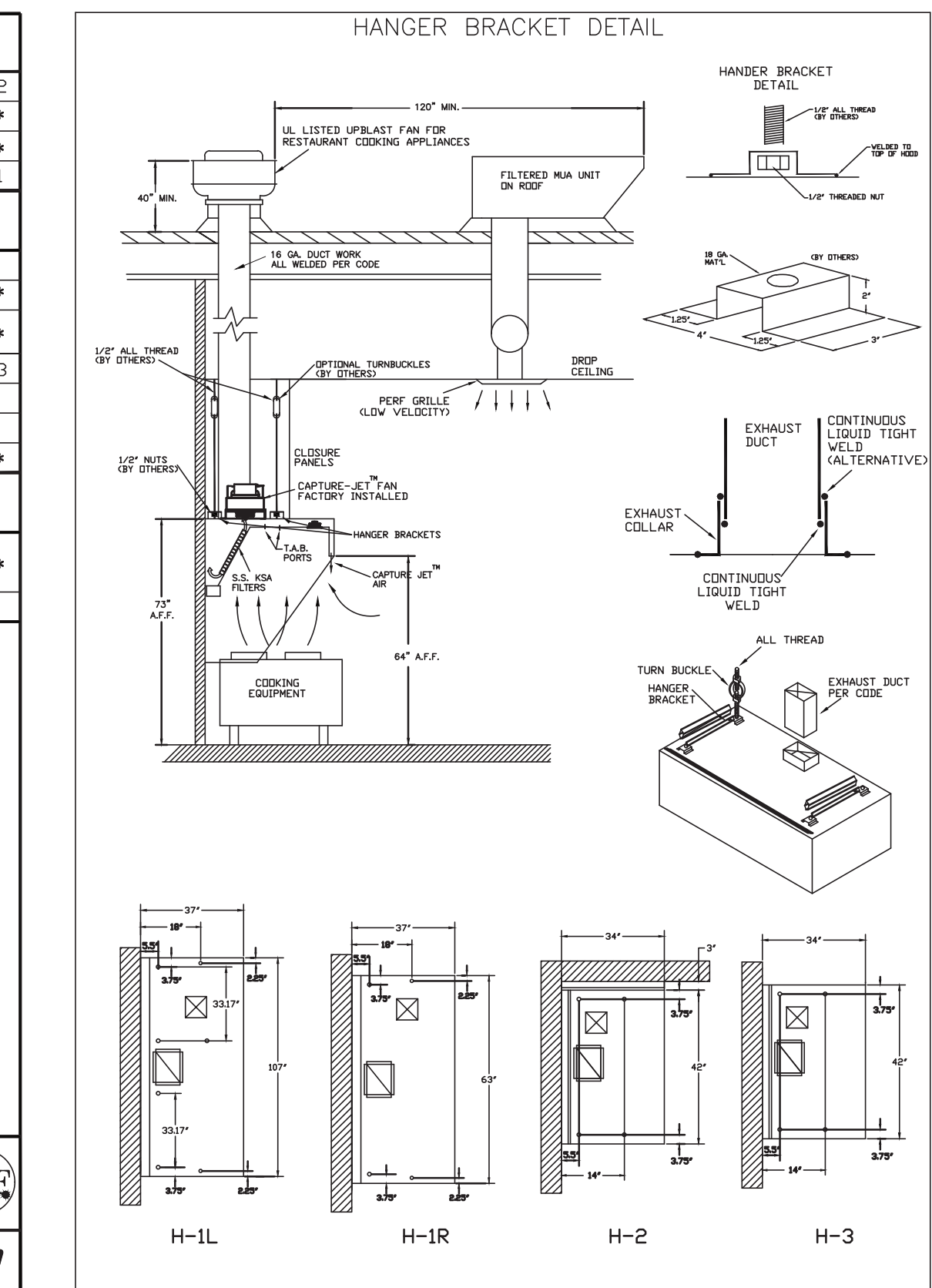
MATERIAL	
EXPOSED SURFACES 18 GA. S.S.	*
ALL 18 GA. S.S.	*

COMMENTS	
CLOSURE HEIGHT = 780 (THREE SIDES)	
CEILING HEIGHT = ADVISE CEILING CLOSURE RECESSED 1" FROM FRONT TO CREATE SHELF	
18"x18" ACCESS DOOR CENTERED AT CAPTURE-JET WITH FRONT GJ INTAKE	
NOTCH LEFT END PANEL	
DOUBLE RECEPTACLE PIN & SLEEVE	
3" REAR STAND-OFF TO HAVE 1" THICK INSULATION	
EQUIPMENT COVERED	23 PRESSURE FRIGERS

DATE	DWG. NO.	ITEM NO.	EXHAUST AIR INFORMATION
		H-2	CFM TAB SP
			701 30' 39'

PROJECT	LOCATION	CAPTURE AIR INFORMATION
CHICK-FIL-A #2554 PARHAM ROAD	RICHMOND, VA	CFM SP
		30 29'

K FACTOR EQUATION: CFM = K FACTOR * JBP
K FACTOR = 1291



STANDARD FEATURES	
S.S. FILTERS (KSA)	2
1/2" S.S. FILTERS (KSA)	1
CAPTURE-JET	*
STAND-OFF	*
L.E.D. LIGHTS	1

OPTIONS	
REMOTE SWITCH PANEL	*
FIRE PROTECTION	*
ETL LISTED V/D EXHAUST DAMPER	*
CEILING CLOSURE	3
STD. BACKSPLASH	2
INSULATED BACKSPLASH	*
KBD DAMPER	*

MATERIAL	
EXPOSED SURFACES 18 GA. S.S.	*
ALL 18 GA. S.S.	*

COMMENTS	
CLOSURE HEIGHT = 780 (THREE SIDES)	
CEILING HEIGHT = ADVISE CEILING CLOSURE RECESSED 1" FROM FRONT TO CREATE SHELF	
18"x18" ACCESS DOOR CENTERED AT CAPTURE-JET WITH FRONT GJ INTAKE	
NOTCH LEFT END PANEL	
DOUBLE RECEPTACLE PIN & SLEEVE	
3" REAR STAND-OFF TO HAVE 1" THICK INSULATION	
EQUIPMENT COVERED	23 PRESSURE FRIGERS

DATE	DWG. NO.	ITEM NO.	EXHAUST AIR INFORMATION
		H-2	CFM TAB SP
			701 30' 39'

PROJECT	LOCATION	CAPTURE AIR INFORMATION
CHICK-FIL-A #2554 PARHAM ROAD	RICHMOND, VA	CFM SP
		30 29'

K FACTOR EQUATION: CFM = K FACTOR * JBP
K FACTOR = 1291

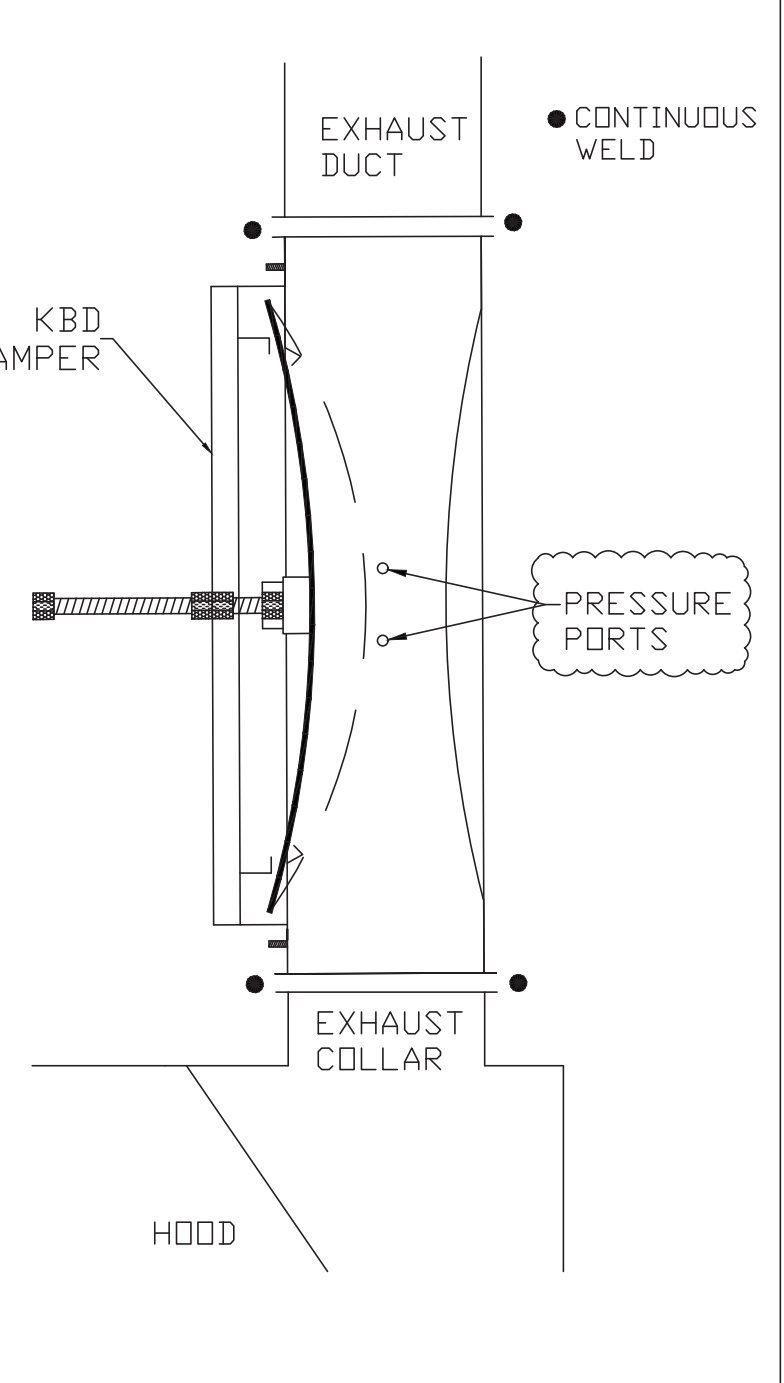
THIS DRAWING MUST BE CHECKED, SIGNED AND RETURNED TO THE APPROPRIATE FACTORY. PLEASE VERIFY THE FOLLOWING:

- ALL DIMENSIONAL INFORMATION, MOUNTING POSITIONS AND CLEARANCES.
- THE LOCATION AND TYPE OF COOKING EQUIPMENT.

NOTE TO APPROVER: THESE EQUIPMENT SUCH AS INCREASED ENERGY INDUCTION OR EQUIPMENT POSITION MAY AFFECT EXHAUST AIRFLOW. HALTON MUST BE NOTIFIED IF ANY OF THESE CHANGES OCCUR, A RECALCULATION EXHAUST AIRFLOW MAY BE REQUIRED.

APPROVED FOR FABRICATION: WITH NO CHANGES WITH CHANGES AS NOTED

DATE: _____



MODEL: KBD KITCHEN BALANCING DAMPER EXHAUST VOLUME DAMPER

CALIBRATED KBDs

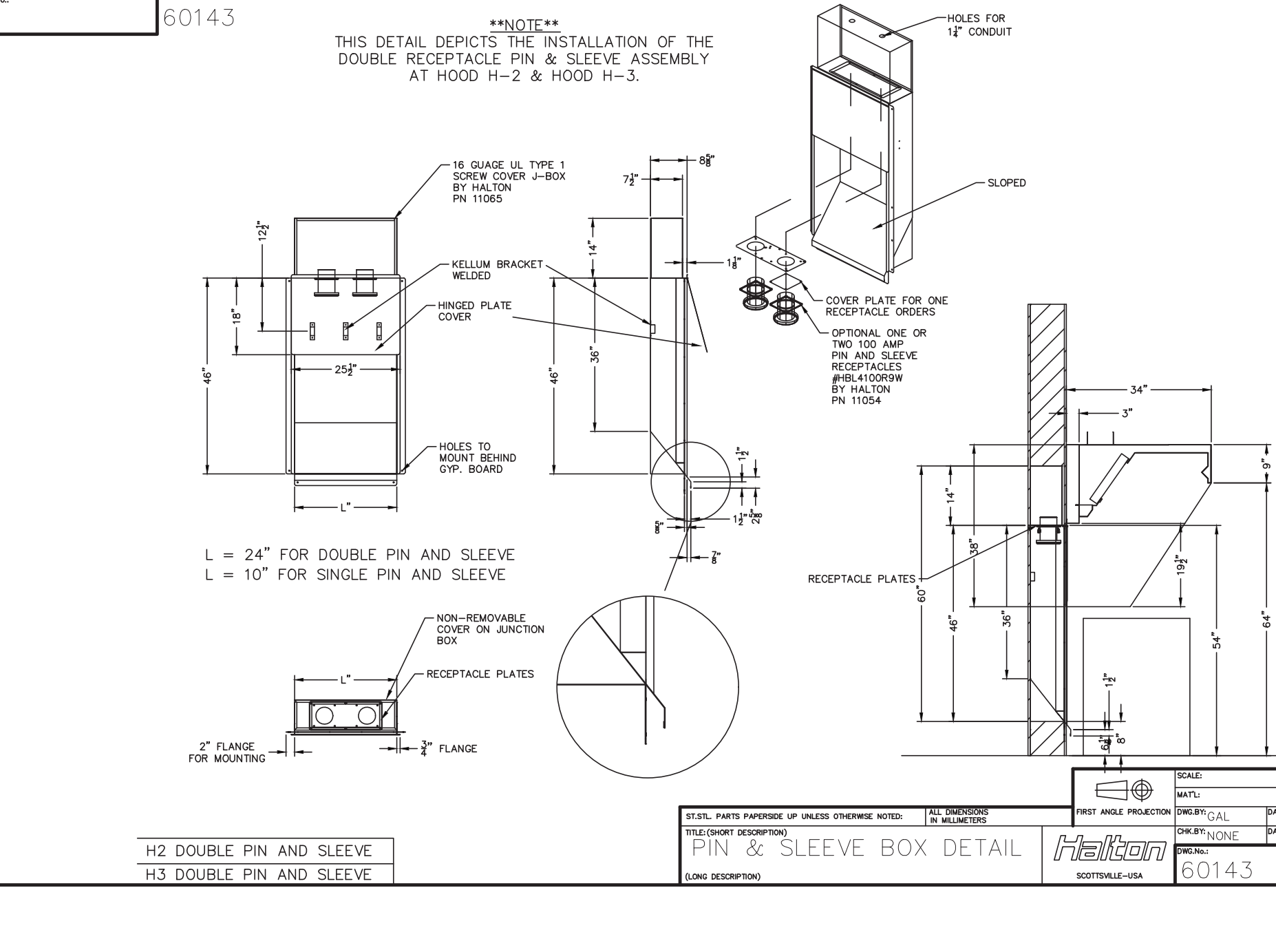
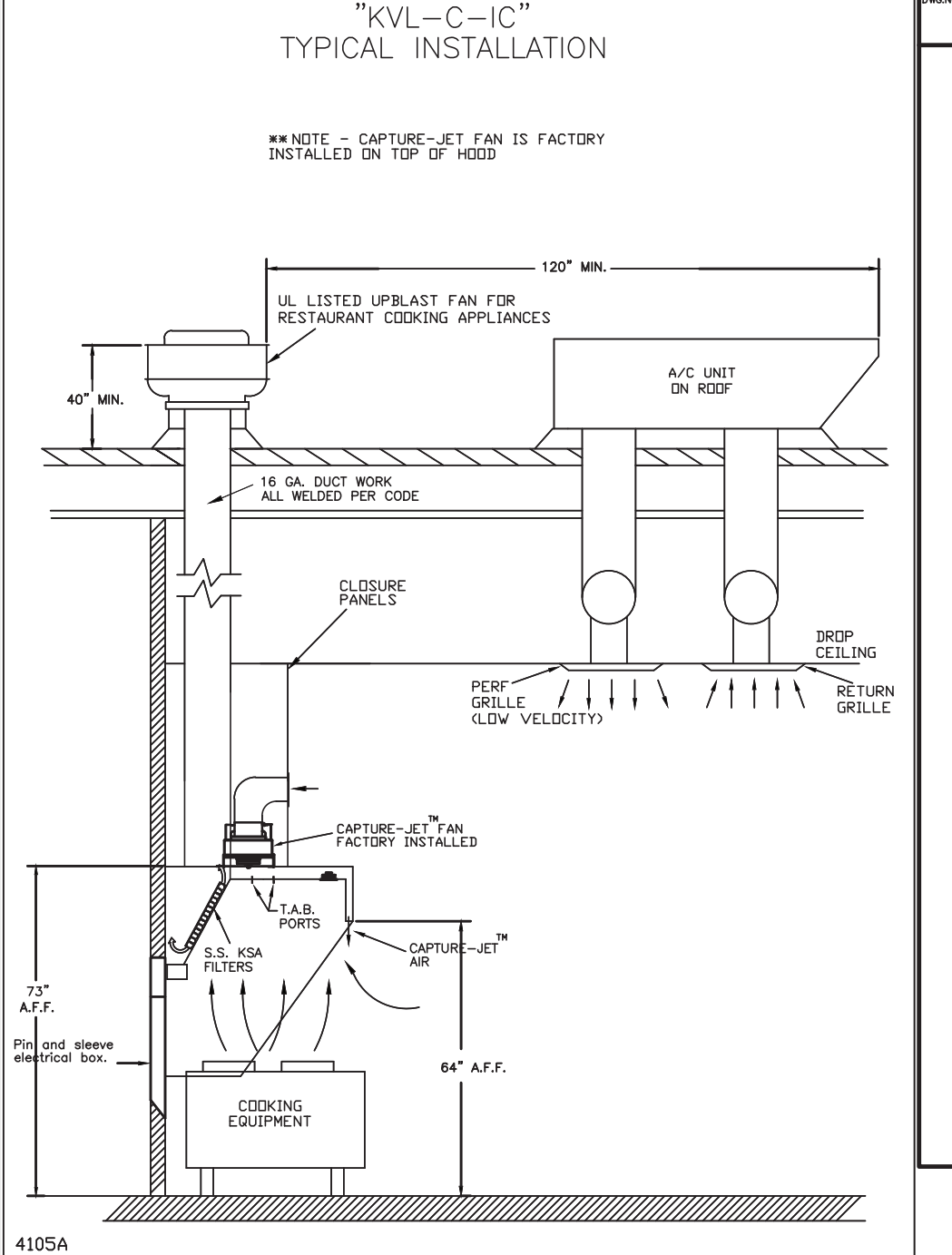
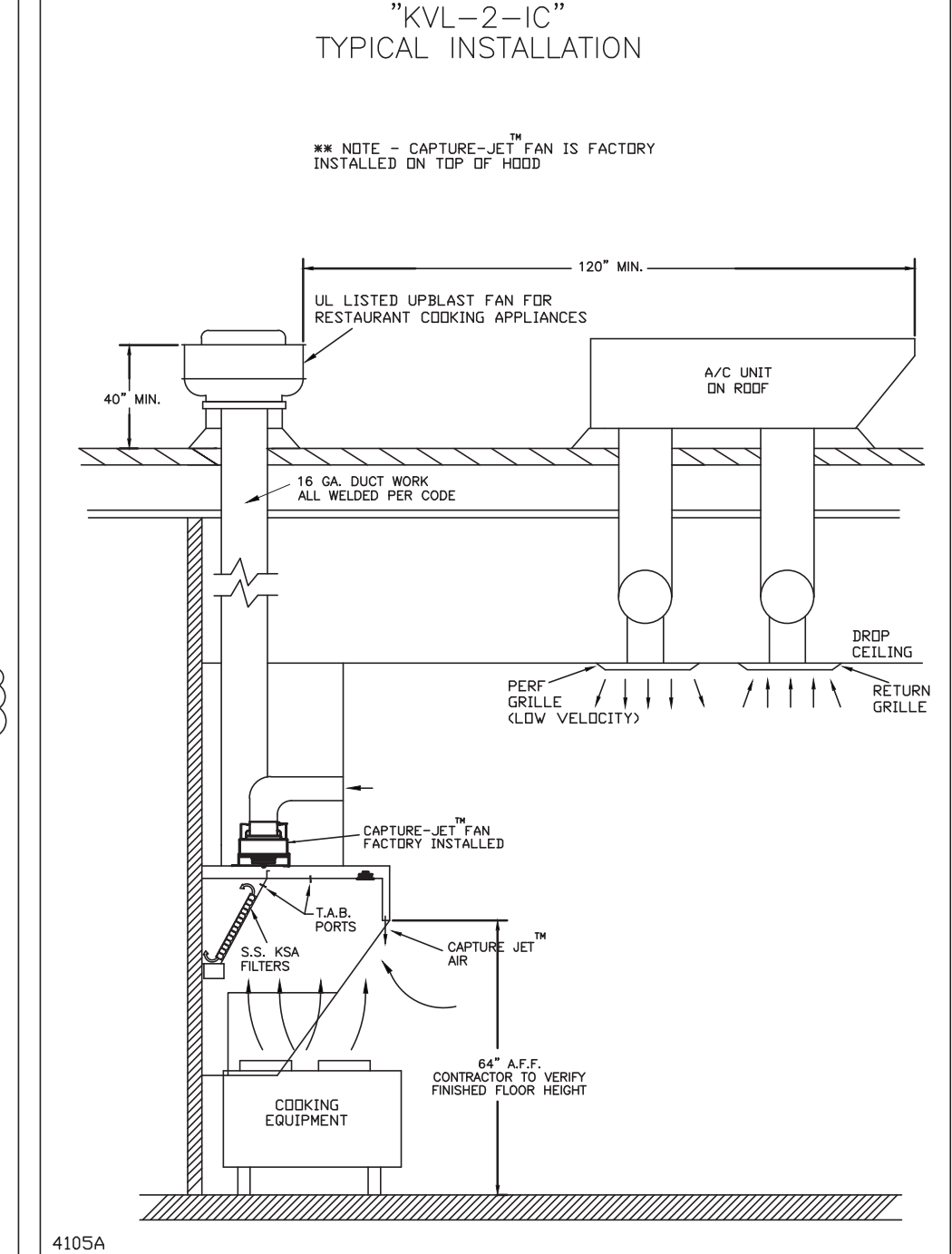
EXHAUST AIR FROM HOOD

30°

PRESSURE PORTS

MATERIAL: FRAME - 16GA CONT. GALV. ADJUSTABLE PANEL 18GA S.S.

TAG	"L"	"W"	QUANTITY
H-1L	14"	8"	1
H-1R	8"	8"	1
H-2	8"	8"	1
H-3	8"	8"	1



MAIL APPROVED DRAWINGS TO APPROPRIATE FACTORY BELOW:

WEBSITE: www.halton.com

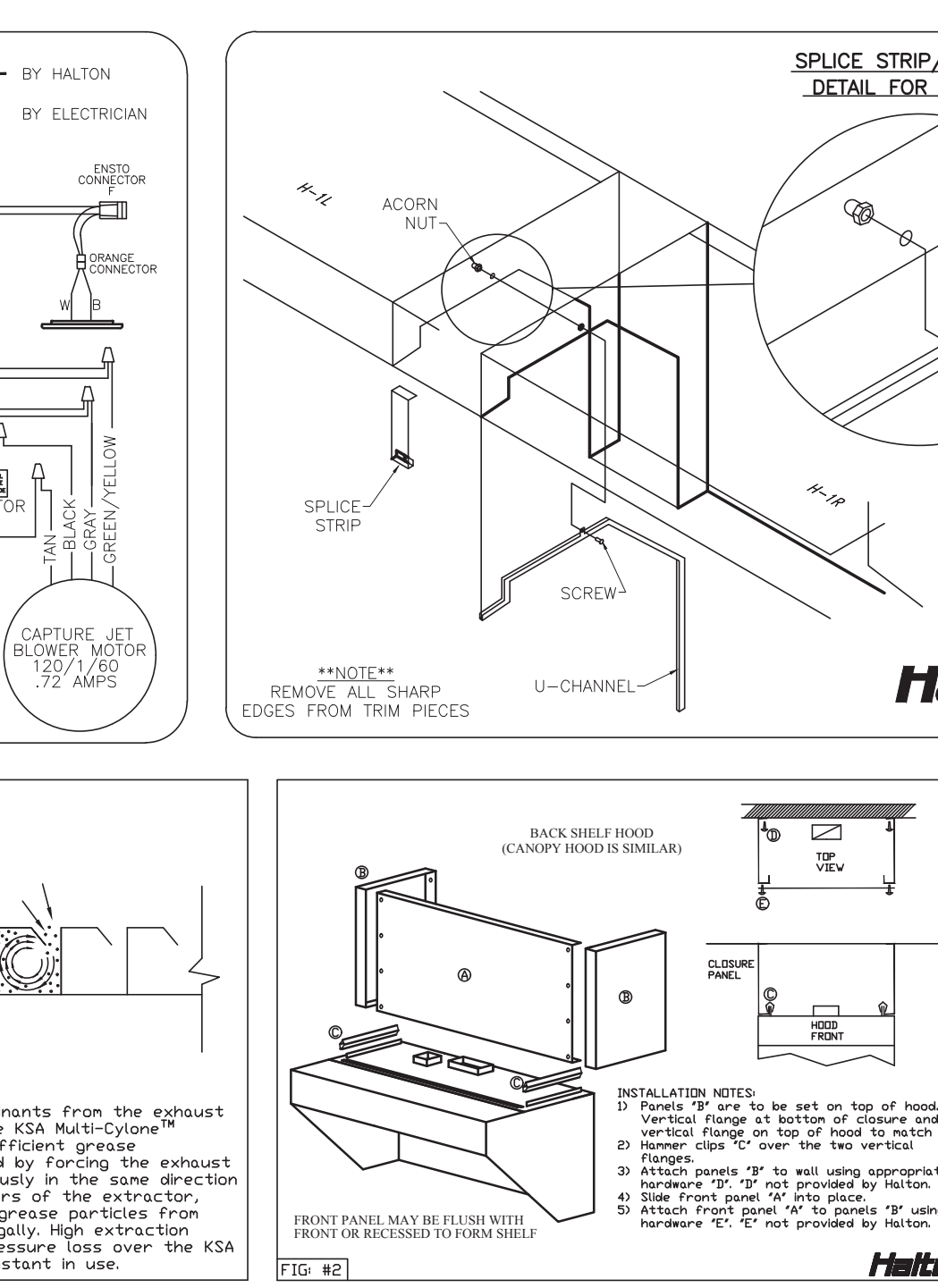
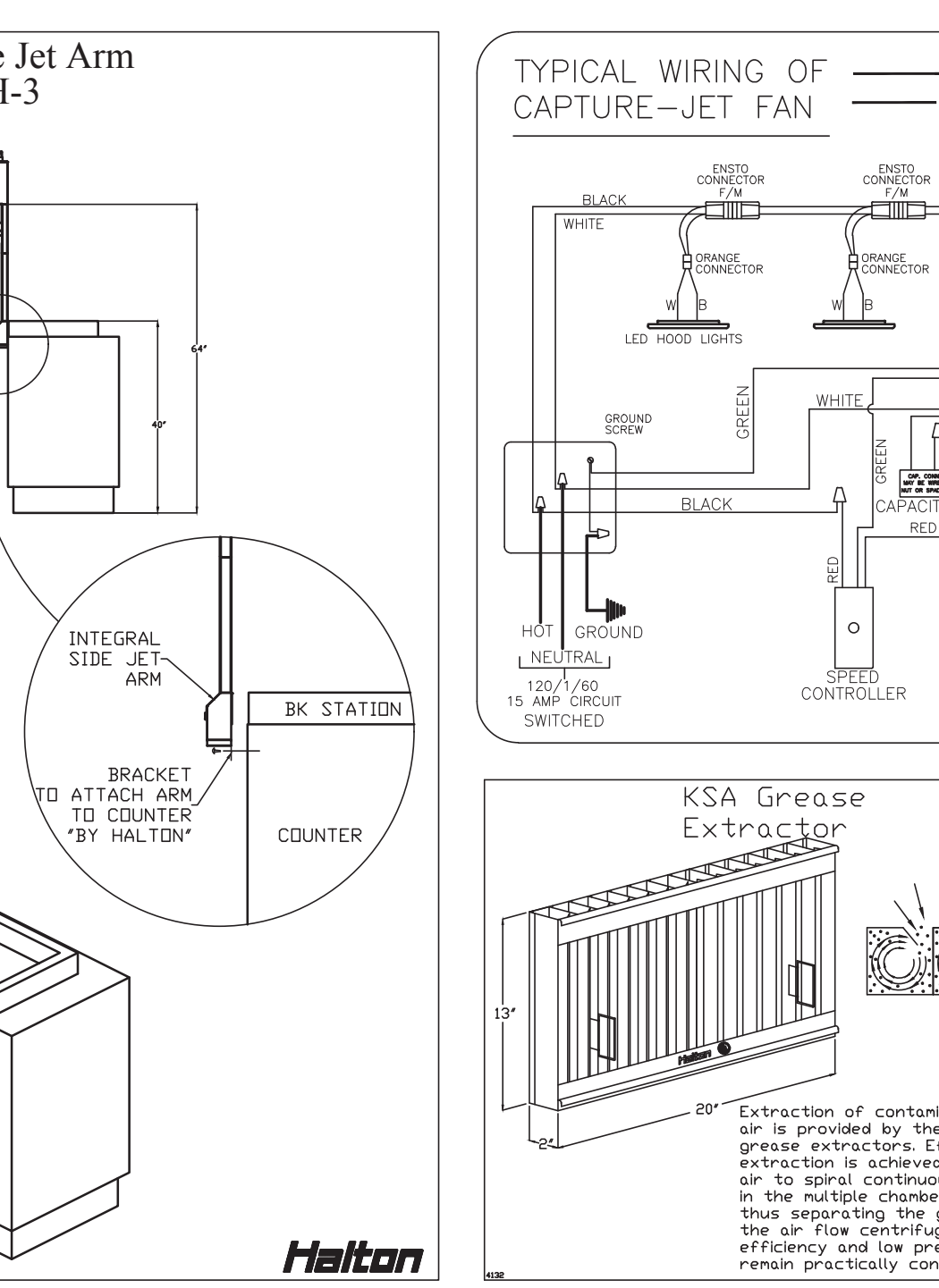
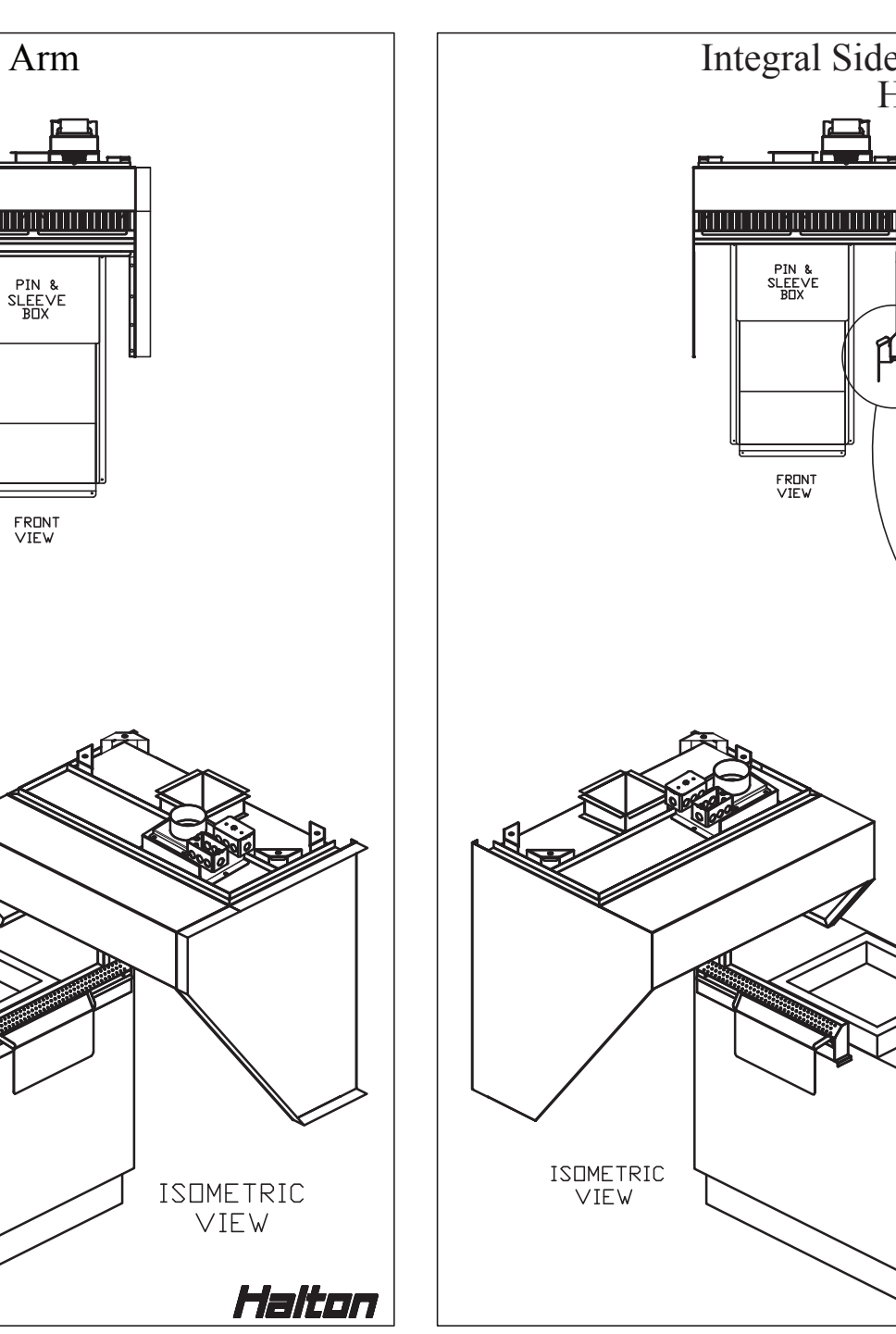
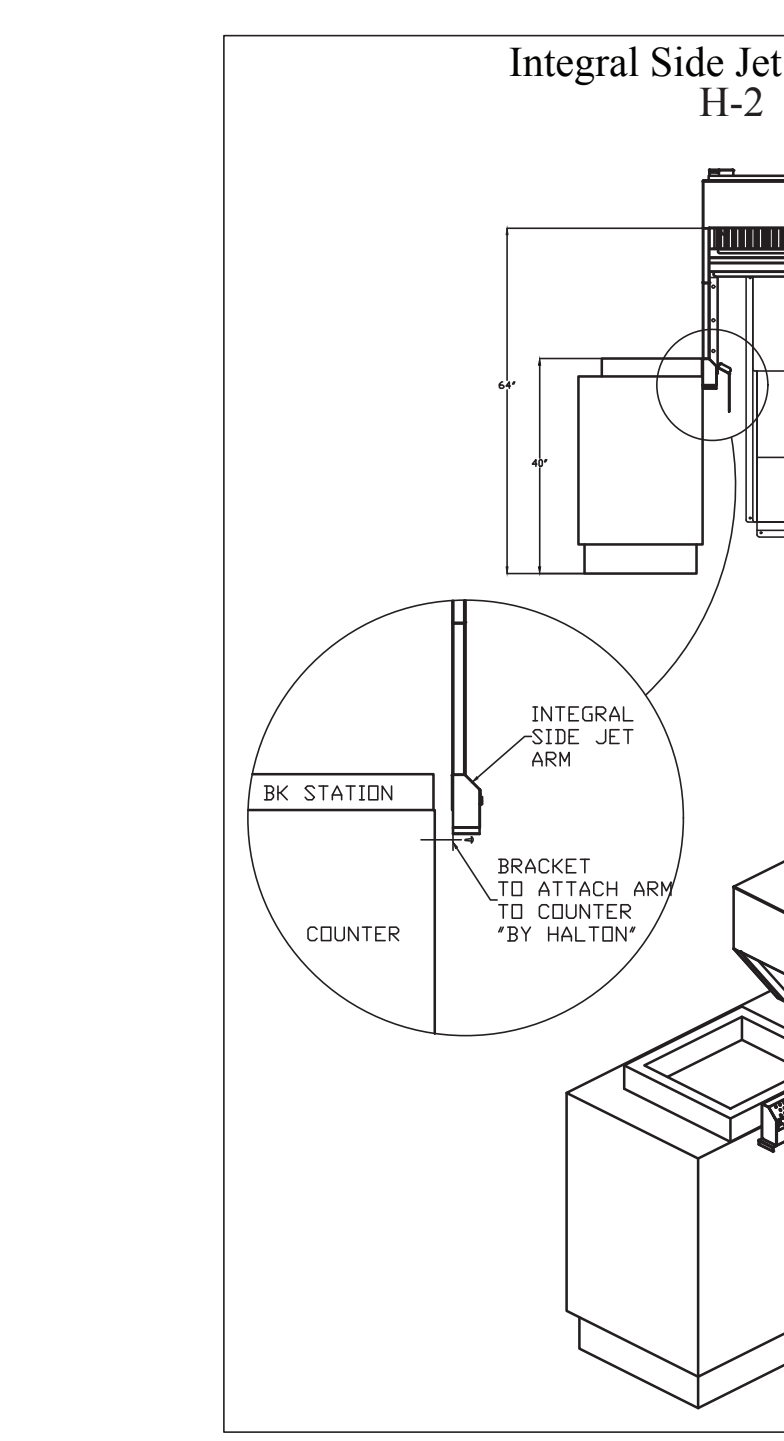
HALTON CO. (USA)
101 INDUSTRIAL DRIVE
SCOTTSVILLE, KY 42164
1-270-237-5600

HALTON CO. (CANADA)
1021 BREVK PLACE
MISSISSAUGA, ON L4W 3R7
1-905-624-0301

REVISION DESCRIPTION

REV.	DATE	DESCRIPTION
1		
2		
3		
4		
5		
6		
7		
8		
9		
10		

SCALE: NOT TO SCALE



HALTON HOODS

- ETL LISTED PER LATEST 710 STANDARD
- BUILT PER NFPA 96
- NSF LISTED

CONFORMS TO UL LISTED, LISTED TO ILL. STD. 304.66

CONFORMS TO UL LISTED, LISTED TO ILL. STD. 304.66

HALTON COMPANY, 101 INDUSTRIAL DR., SCOTTSVILLE, KY 42164

MODEL NO.	SERIAL NO.	ITEM NO.
KVL-2-IC		

GENERAL REQUIREMENTS

FILTER TYPE EXHAUST HOOD FOR COMMERCIAL AND INSTITUTIONAL KITCHENS

THE FAN CIRCUIT IS RATED FOR 30V, 20A, 60HZ

THE LIGHTING CIRCUIT IS RATED FOR 30V, 20A, 60HZ

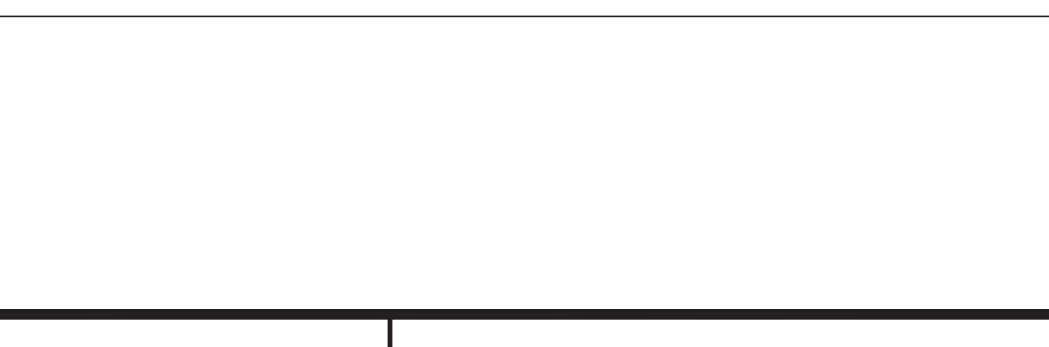
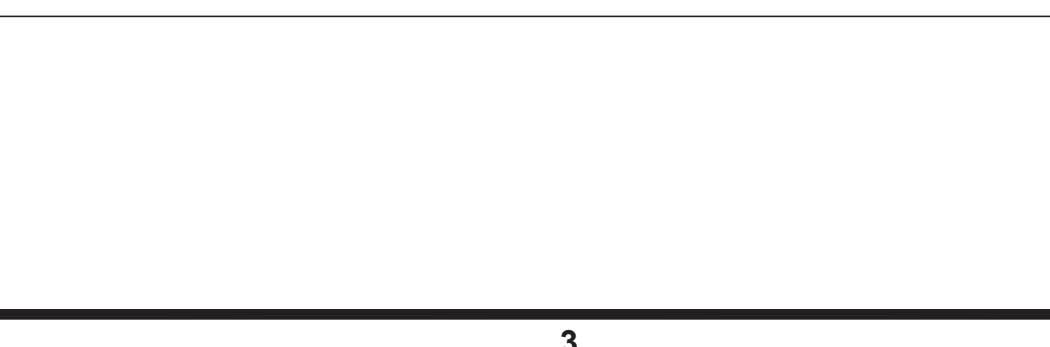
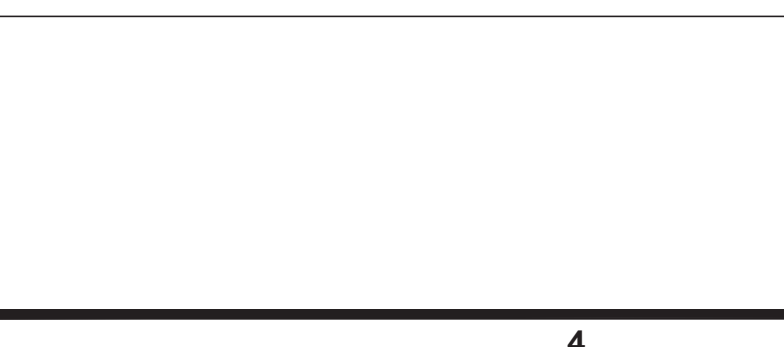
THE HOOD HAS BEEN CERTIFIED BY ETL FOR 3" INCH CLEARANCE TO COMBUSTIBLE MATERIALS (TOP, SIDES, FRONT AND REAR) IN COMPLIANCE WITH UL710 WITH CONSIDERATION TO NFPA 96

THE HOOD IS PROVIDED WITH REMOVABLE KSA FILTERS AND LIGHTING FIXTURES. REMOVE FILTERS ONLY WITH UL CLASSIFIED FILTER TYPE OF THE SAME MODEL AND SUITABLE FOR USE TO HEAVY BUTY COOKING APPLIANCES.

BUTY LEVEL	MINIMUM OVERHANG	EXTENSION BETWEEN FRONT EDGE OF HOOD AND COOKING SURFACE	MIN. CLEARANCE HOOD LENGTH
MEDIUM	6"	0"	30"
MEDIUM	6"	0"	30"
MEDIUM	6"	0"	30"
HEAVY	6"	0"	30"
HEAVY	6"	0"	30"

INSTALLATION NOTES:

- HOOD MUST BE ASSEMBLED TO BE ON TOP OF HOOD
- VERTICAL FLANGE AT BOTTOM OF HOOD AND HOOD MUST BE ON TOP OF HOOD IN ORDER TO EXTRACT AIR
- FRONT FLANGE MUST BE ON TOP OF HOOD
- FRONT FLANGE MUST BE ON TOP OF HOOD
- FRONT FLANGE MUST BE ON TOP OF HOOD
- FRONT FLANGE MUST BE ON TOP OF HOOD
- FRONT FLANGE MUST BE ON TOP OF HOOD
- FRONT FLANGE MUST BE ON TOP OF HOOD
- FRONT FLANGE MUST BE ON TOP OF HOOD
- FRONT FLANGE MUST BE ON TOP OF HOOD



HALTON HOODS

- ETL LISTED PER LATEST 710 STANDARD
- BUILT PER NFPA 96
- NSF LISTED

CONFORMS TO UL LISTED, LISTED TO ILL. STD. 304.66

CONFORMS TO UL LISTED, LISTED TO ILL. STD. 304.66

HALTON COMPANY, 101 INDUSTRIAL DR., SCOTTSVILLE, KY 42164

MODEL NO.	SERIAL NO.	ITEM NO.
KVL-2-IC		

GENERAL REQUIREMENTS

FILTER TYPE EXHAUST HOOD FOR COMMERCIAL AND INSTITUTIONAL KITCHENS

THE FAN CIRCUIT IS RATED FOR 30V, 20A, 60HZ

THE LIGHTING CIRCUIT IS RATED FOR 30V, 20A, 60HZ

THE HOOD HAS BEEN CERTIFIED BY ETL FOR 3" INCH CLEARANCE TO COMBUSTIBLE MATERIALS (TOP, SIDES, FRONT AND REAR) IN COMPLIANCE WITH UL710 WITH CONSIDERATION TO NFPA 96

THE HOOD IS PROVIDED WITH REMOVABLE KSA FILTERS AND LIGHTING FIXTURES. REMOVE FILTERS ONLY WITH UL CLASSIFIED FILTER TYPE OF THE SAME MODEL AND SUITABLE FOR USE TO HEAVY BUTY COOKING APPLIANCES.

BUTY LEVEL	MINIMUM OVERHANG	EXTENSION BETWEEN FRONT EDGE OF HOOD AND COOKING SURFACE	MIN. CLEARANCE HOOD LENGTH
MEDIUM	6"	0"	30"
MEDIUM	6"	0"	30"
MEDIUM	6"	0"	30"
HEAVY	6"	0"	30"
HEAVY	6"	0"	30"

INSTALLATION NOTES:

- HOOD MUST BE ASSEMBLED TO BE ON TOP OF HOOD
- VERTICAL FLANGE AT BOTTOM OF HOOD AND HOOD MUST BE ON TOP OF HOOD IN ORDER TO EXTRACT AIR
- FRONT FLANGE MUST BE ON TOP OF HOOD
- FRONT FLANGE MUST BE ON TOP OF HOOD
- FRONT FLANGE MUST BE ON TOP OF HOOD
- FRONT FLANGE MUST BE ON TOP OF HOOD
- FRONT FLANGE MUST BE ON TOP OF HOOD
- FRONT FLANGE MUST BE ON TOP OF HOOD
- FRONT FLANGE MUST BE ON TOP OF HOOD
- FRONT FLANGE MUST BE ON TOP OF HOOD

PROJECT: CHICK-FIL-A #2554

DRAWING NO.: H-1.1

DATE: 10.04.22

SCALE: NOT TO SCALE

LOCATION: RICHMOND, VA

DRAWN BY: SKM

DATE: 10.04.22

SCALE: NOT TO SCALE



Chick-fil-A
5200 Buffington Road
Atlanta, Georgia
30349-2998

INTERPLAN
INTERPLAN LLC
AR0011595
CA 8660

ARCHITECTURE
ENGINEERING
PERMITTING

220 E. CENTRAL PKWY, STE 4000
ALAMONTE SPRINGS, FL 32701
407.645.5038

FOR INFORMATION ONLY

CHICK-FIL-A
Parham Road
1529 N. Parham Road,
Richmond, VA 23229

FSR#02554

BUILDING TYPE / SIZE: SOB-E
RELEASE: 08/24/2022

PRINTED FOR CONSTRUCTION

REVISION SCHEDULE

NO.	DATE	DESCRIPTION
1		
2		
3		
4		
5		
6		
7		
8		
9		
10		

CONSULTANT PROJECT # 2020.0759

DATE: 08/24/22

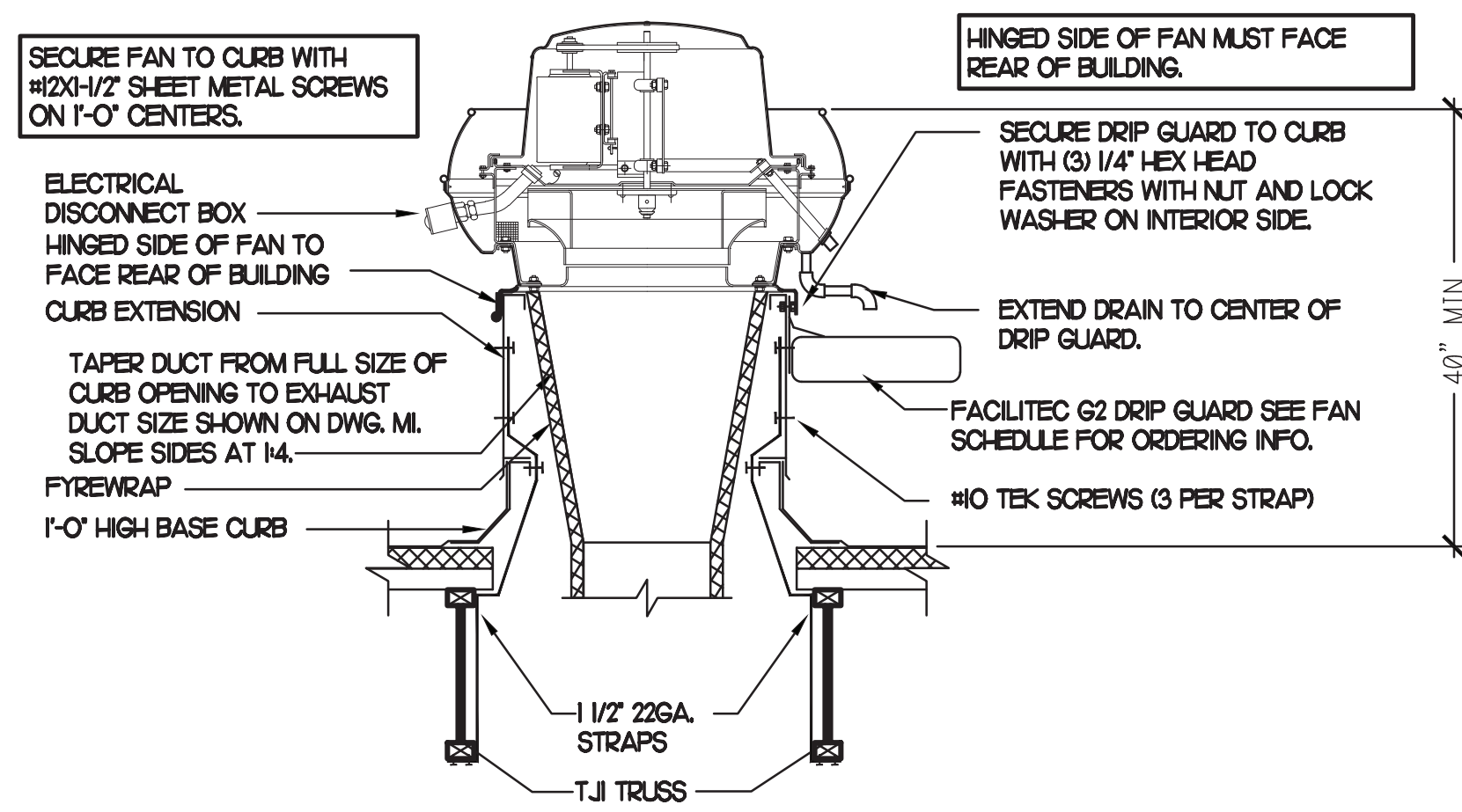
DRAWN BY: AM

CHECKED BY: DAK

Information contained on this drawing and all digital files produced for above named project may not be reproduced or transmitted in any form or by any means without the prior written consent of the project sponsor.

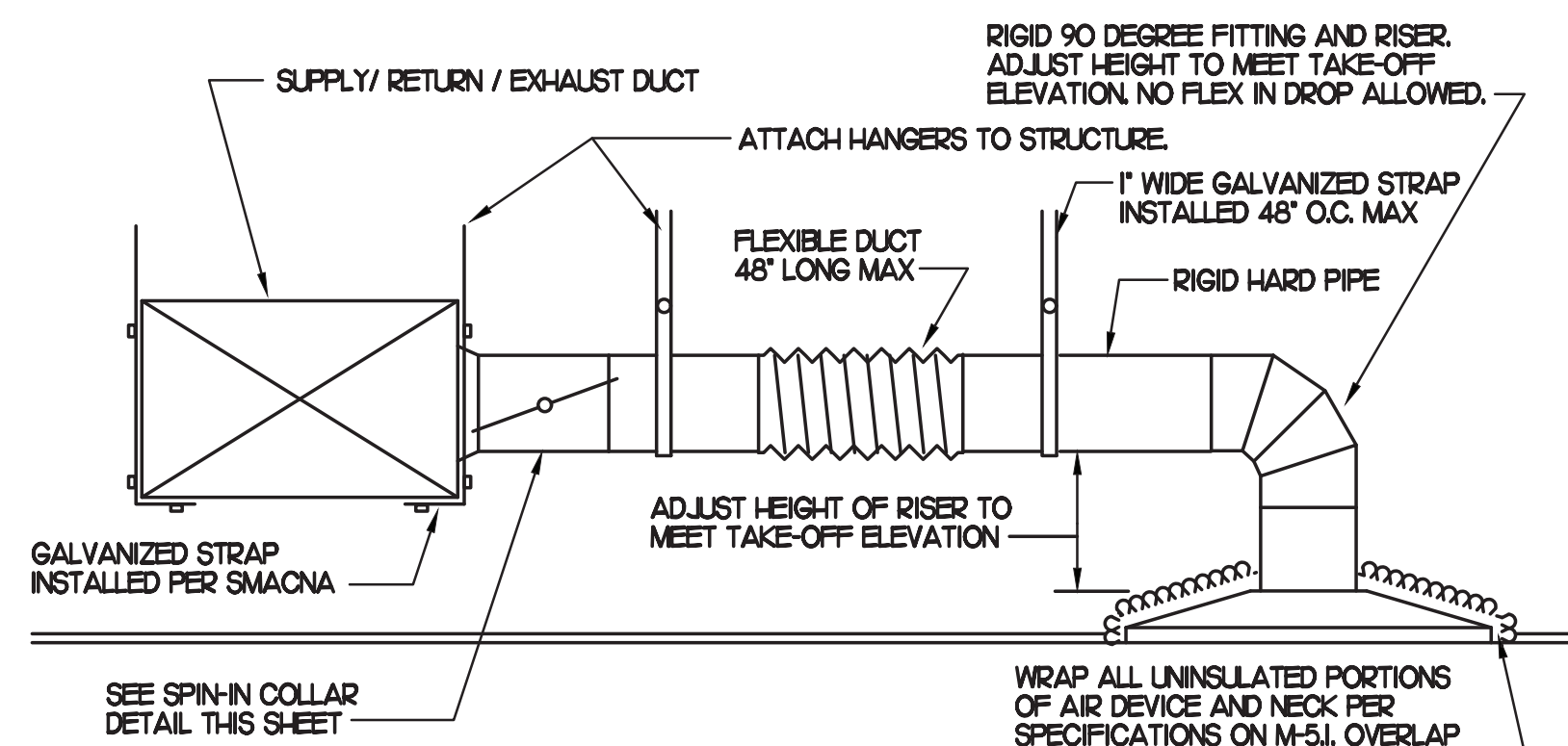
HOOD DETAILS

SHEET NUMBER
MH1.1



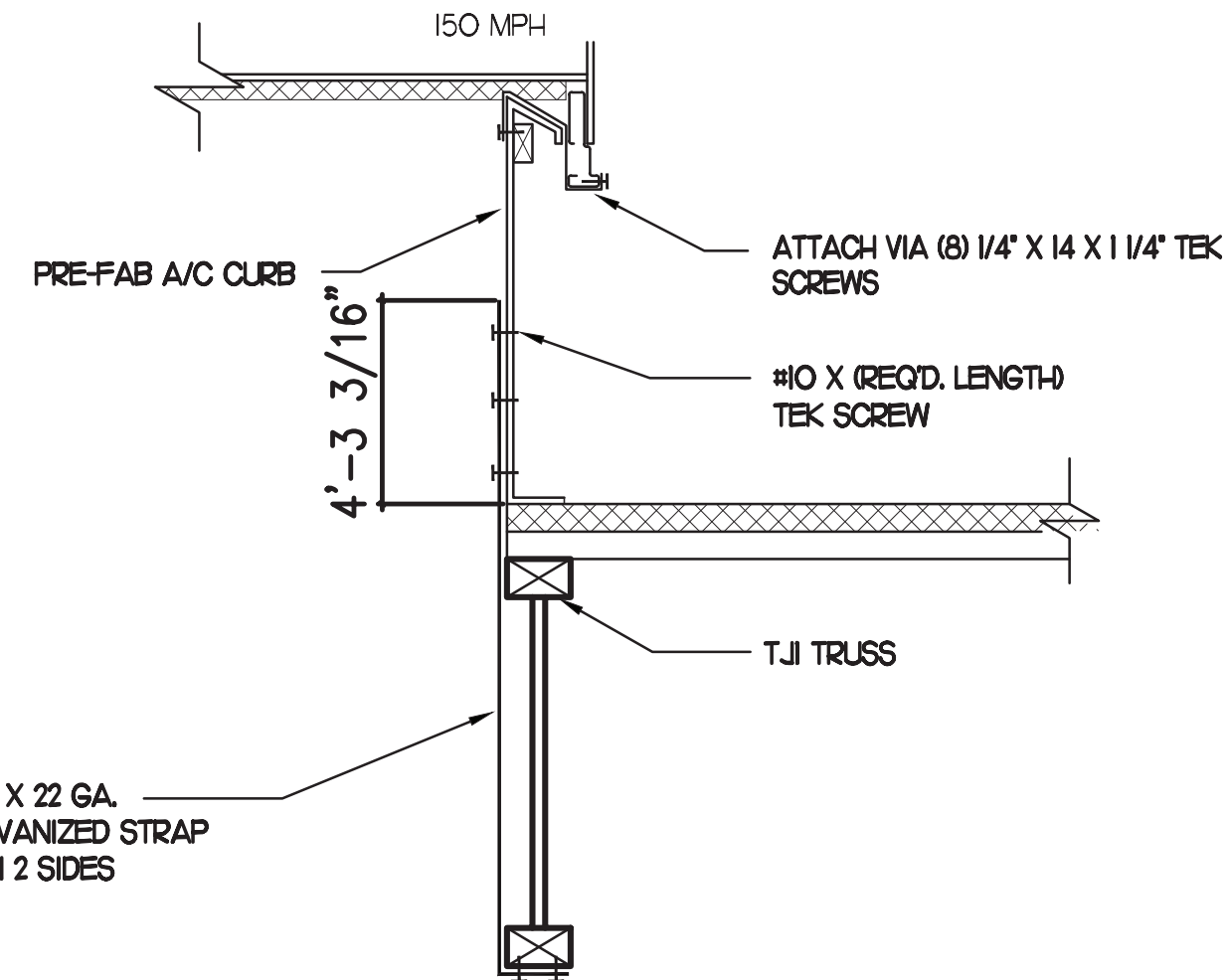
1 KITCHEN HOOD EXHAUST FAN

NO SCALE



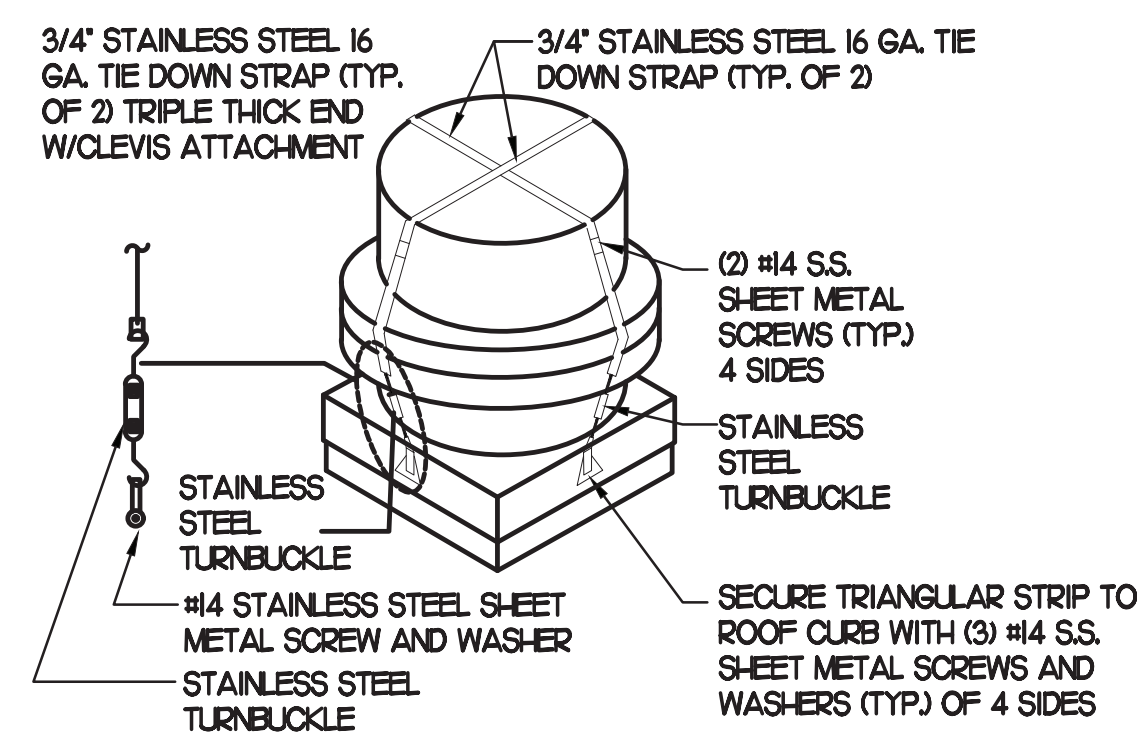
2 SAG/RAG/GRILLE TAKE-OFF

NO SCALE



3 RTU TIE-DOWNS DETAIL

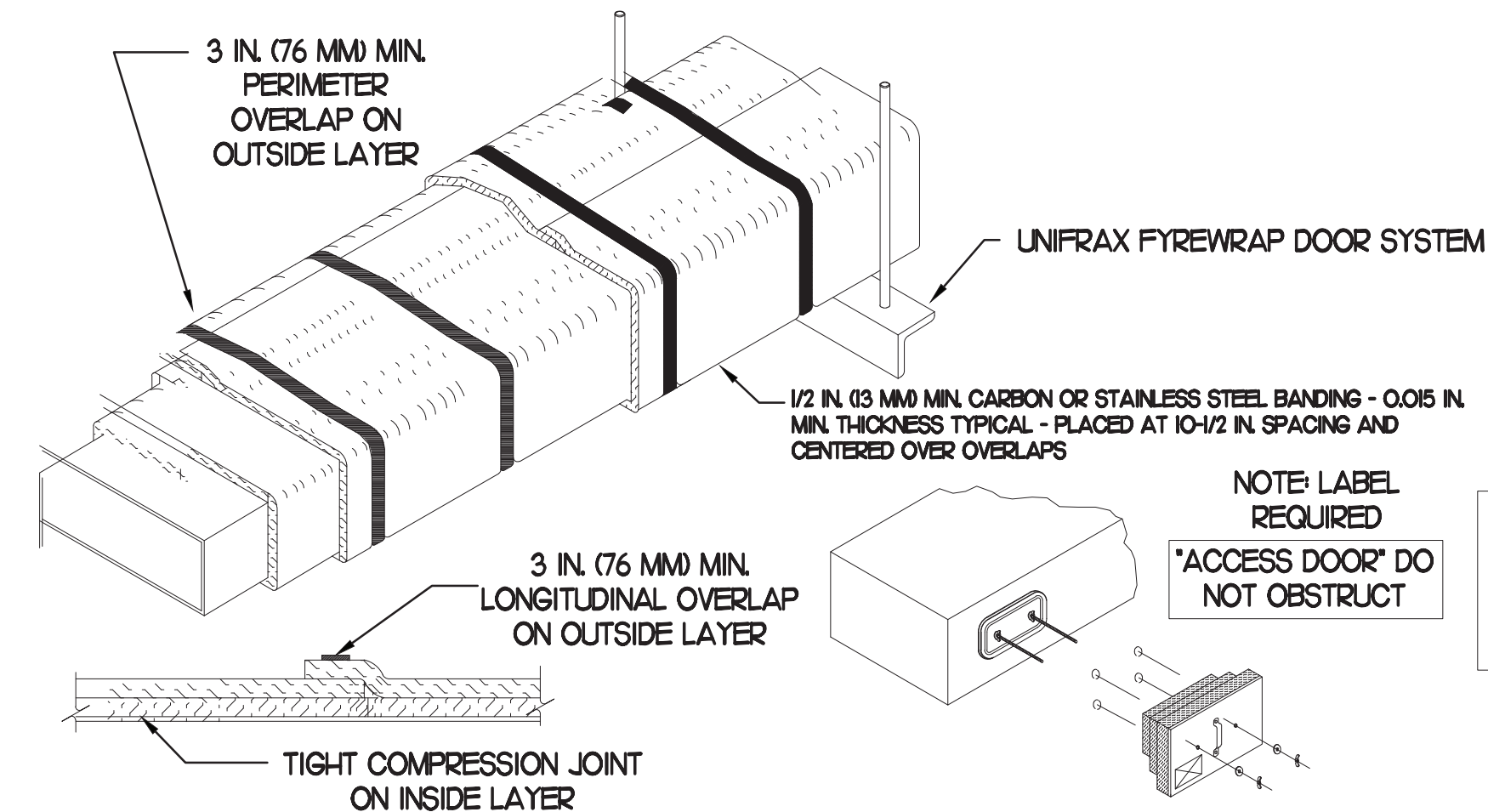
NO SCALE



NOTE: SIMILAR FOR KITCHEN HOOD EXHAUST AND SUPPLY FANS.

4 FAN SECURING DETAIL

NO SCALE



1. UNIFRAX FIREWRAP ELITE 1.5 DUCT INSULATION HAS BEEN TESTED IN ACCORDANCE WITH ASTM E 2336 TO PROVIDE ZERO CLEARANCE TO COMBUSTIBLES AND MEETS THE REQUIREMENTS FOR ONE OR TWO HOUR ENCLOSURES. THROUGH PENETRATIONS FIRESTOP SYSTEMS ARE TESTED IN ACCORDANCE WITH EITHER ASTM E 814 OR UL 1479. ICC-ES APPROVAL PER REPORT ESR 2213 OR ESR 2832. UNDERWRITER'S LABORATORIES (UL) LISTINGS SHOW COMPLIANCE TO UL 1479 FOR THROUGH PENETRATION FIRESTOP SYSTEMS.

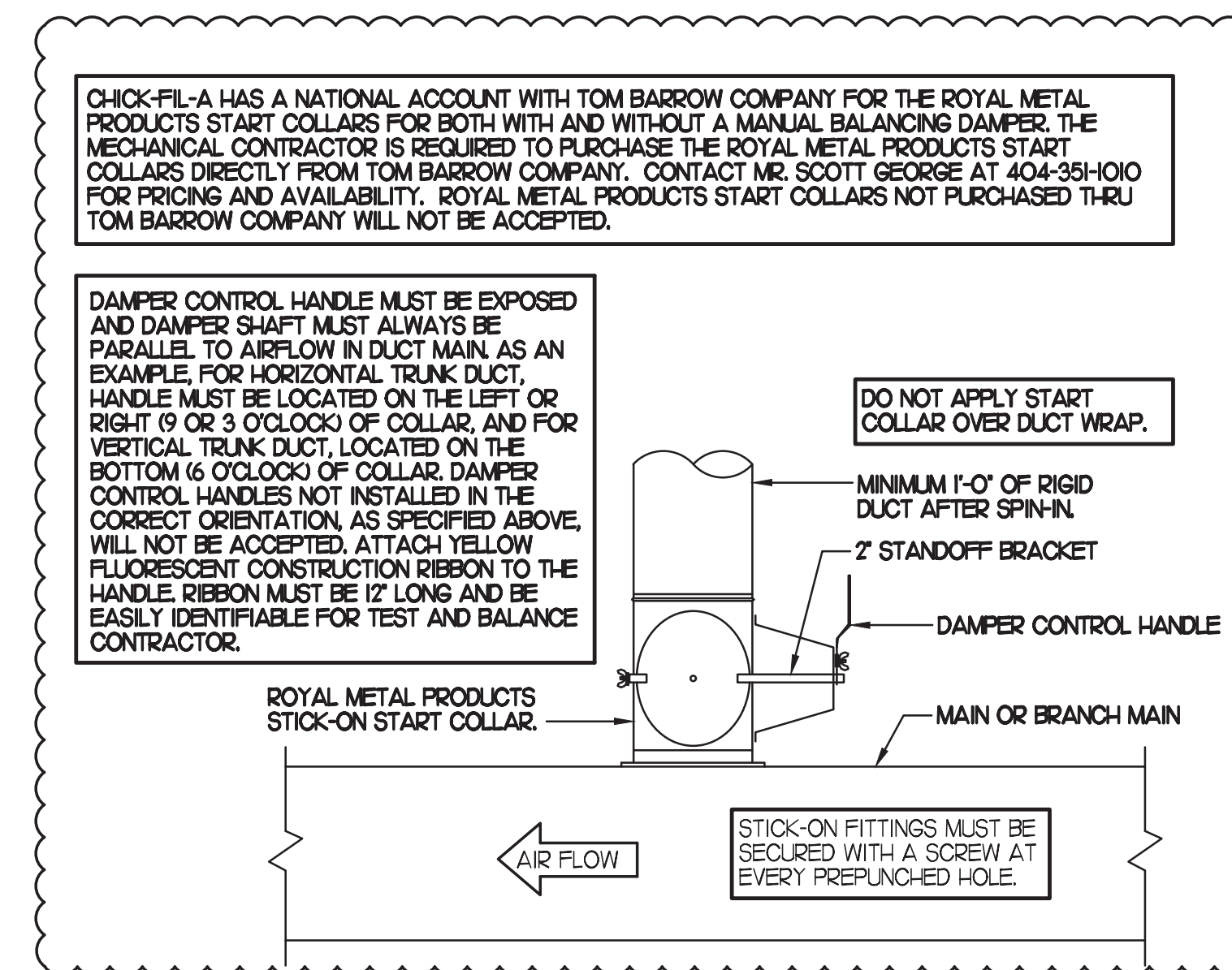
2. COMPLIANT TO THE FOLLOWING CODES:

- | | |
|---|--|
| BUILDING CODE:
INTERNATIONAL BUILDING CODE EDITION 2018. | ELECTRICAL CODE:
NATIONAL ELECTRICAL CODE EDITION 2017. |
| PLUMBING CODE:
INTERNATIONAL PLUMBING CODE EDITION 2018. | ENERGY CODE:
INTERNATIONAL ENERGY CONSERVATION CODE. |
| MECHANICAL CODE:
INTERNATIONAL MECHANICAL CODE EDITION 2018. | FIRE CODE:
INTERNATIONAL FIRE CODE EDITION 2012. |
| FUEL GAS CODE:
INTERNATIONAL FUEL GAS CODE EDITION 2018. | ACCESSIBILITY CODE:
ANSI A117.1 EDITION 2009. |

- INSULATION APPLIED IN TWO LAYERS WITH TIGHT COMPRESSION JOINT ON INSIDE LAYER AND 3 INCH MINIMUM OVERLAPS ON BOTH PERIMETER AND LONGITUDINAL OVERLAPS ON OUTSIDE LAYER.
- GREASE EXHAUST DUCT RUNS FROM THE HOOD EXHAUST CONNECTION UP TO THE EXHAUST FAN ON THE ROOF WITH MINIMAL TURNS OR BENDS AND MAINTAINING MINIMUM 1/4 UNIT VERTICAL RISE PER 12 UNITS HORIZONTAL RUN. NFPA 96 COMPLIANT ACCESS DOORS LOCATED AS REQUIRED BY CODE.
- UNIFRAX FIREWRAP ELITE 1.5 ACCESS DOORS AS SPECIFIED IN ICC-ES BUILDING CODE REPORTS ESR 2213 OR ESR 2832.
- ROOF MOUNTED EXHAUST FAN IS MOUNTED ON A HINGED BASE WHICH ALLOWS ACCESS TO THE DUCT FROM THE ROOF.
- SUPPORT HANGER SYSTEMS DO NOT NEED TO BE WRAPPED PROVIDED THE HANGER RODS ARE AT LEAST A MINIMUM OF 3/8 IN. DIAMETER. USE MINIMUM 2 X 2 X 1/8 IN. STEEL ANGLE OR SMACNA EQUIVALENT SUPPORT SYSTEM.
- UNIFRAX FIREWRAP ELITE 1.5 DUCT ENCLOSURE SYSTEM SHALL BE INSTALLED IN ACCORDANCE WITH MANUFACTURER'S INSTRUCTIONS.
- UNIFRAX FIREWRAP ELITE 1.5 DUCT WRAP SHALL BE INSTALLED ON THE DUCT FROM THE HOOD CONNECTION TO THE CONNECTION TO THE FAN.

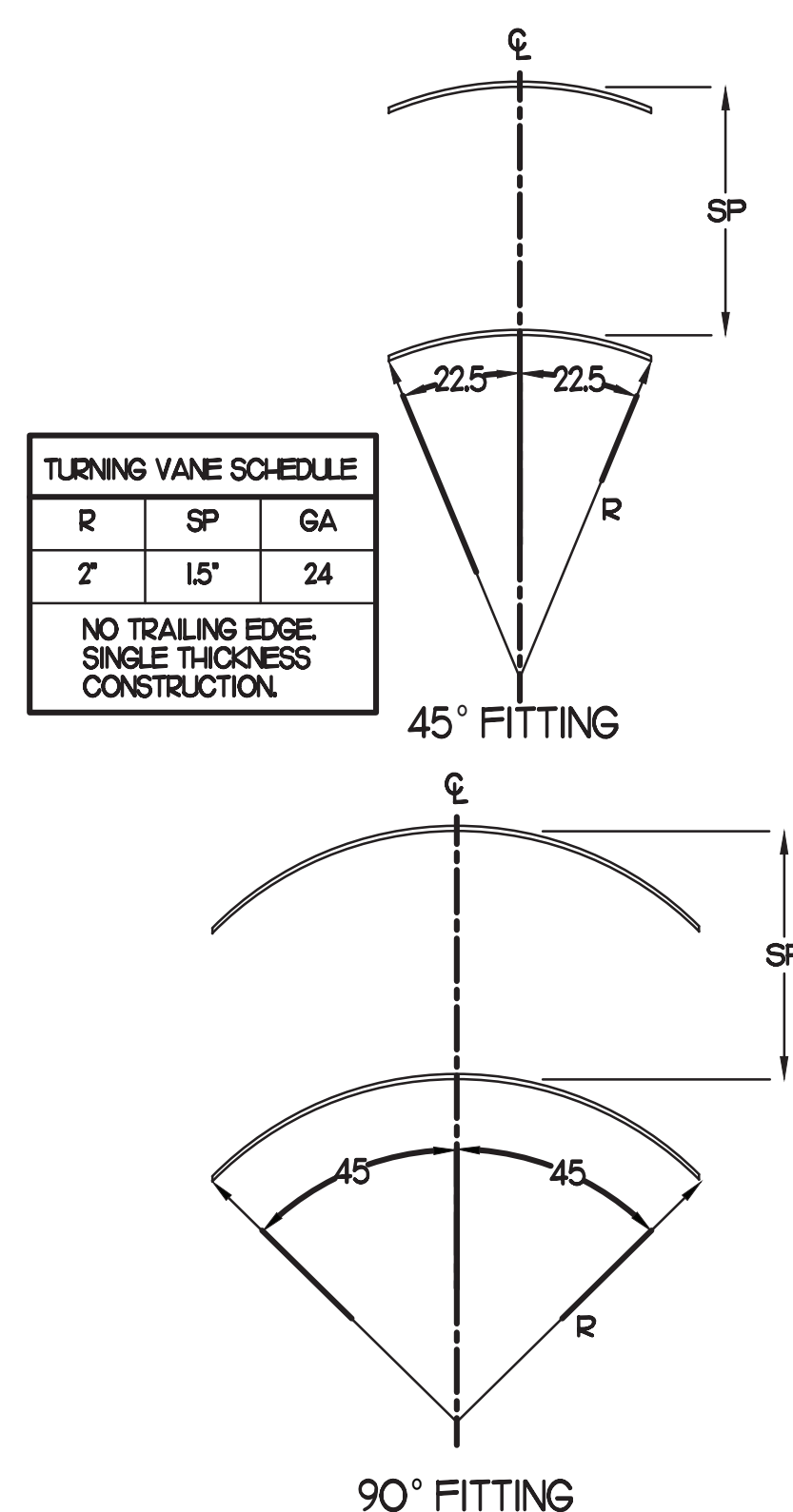
6 GREASE EXHAUST DUCT PROTECTION TO COMBUSTIBLES DETAIL

NO SCALE



7 START COLLAR

NO SCALE



8 TURNING VANES

NO SCALE



Chick-fil-A

Chick-fil-A
5200 Buffington Road
Atlanta, Georgia
30349-2998

INTERPLAN

INTERPLAN LLC
AR0011595
CA 8660

ARCHITECTURE
ENGINEERING
PERMITTING

220 E. CENTRAL PKWY, STE 4000
ALFAMONTE SPRINGS, FL 32701
407.645.5038

SEAL:



CHICK-FIL-A
Parham Road
1529 N. Parham Road,
Richmond, VA 23229

FSR#02554

BUILDING TYPE / SIZE: S08-E
RELEASE: 08/24/2022

PRINTED FOR CONSTRUCTION

REVISION SCHEDULE

NO.	DATE	DESCRIPTION
02	08/11/2022	REV COMMENTS
03	08/31/2022	ARCH CIVIL COORDINATION

CONSULTANT PROJECT # 2020.0750
DATE 08/24/22
DRAWN BY AM

CHECKED BY DAK
Information contained on this drawing and all digital files produced for above named project may not be reproduced in any manner without express written or verbal consent from the project representation.

SHEET MECHANICAL DETAILS

SHEET NUMBER
M4.1



Chick-fil-A

Chick-fil-A
5200 Buffington Road
Atlanta, Georgia
30349-2998

INTERPLAN
INTERPLAN LLC
AR0011595
CA 8660
ARCHITECTURE
ENGINEERING
PERMITTING

220 E. CENTRAL PKWY, STE 4000
ALAMONTE SPRINGS, FL 32701
407.645.5038

SEAL:



CHICK-FIL-A
Parham Road
1529 N. Parham Road,
Richmond, VA 23229

FSR#02554

BUILDING TYPE / SIZE: S08-E
RELEASE: 08/24/2022
PRINTED FOR: CONSTRUCTION

REVISION SCHEDULE

NO.	DATE	DESCRIPTION
02	08/03/2023	RD COMMENTS

CONSULTANT PROJECT # 2020.0759
DATE 08/24/22
DRAWN BY AM
CHECKED BY DAK

Information contained on this drawing and all digital files produced for above named project may not be reproduced or transmitted in any form or by any means, electronic, mechanical, photocopying, recording, or by any information storage and retrieval system, without the prior written permission of the consultant.

SHEET MECHANICAL CONTROLS

SHEET NUMBER
M4.3

PROVIDE A PROFESSIONALLY LAMINATED COPY OF THESE DETAILS TO BE INSTALLED INSIDE THE ROOFTOP UNIT CONTROL CABINET. USE A SETON CHART FRAME STYLE #88624. TELEPHONE NUMBER 800-243-8824. FOR MOUNTING THE DETAIL. ATTACH THE FRAME TO THE INTERIOR OF THE UNIT IN PLAIN AND EASY VIEW OF THE CONTROLS SECTION. CONTACT ENGINEER OF RECORD FOR A REPRODUCIBLE COPY OF THE DETAIL.

- NOTES:
- MECHANICAL CONTRACTOR SHALL MAKE PLASTIC LAMINATE OF THIS DETAIL AND INSTALL PERMANENTLY ON INSIDE DOOR OF ROOFTOP UNIT CONTROL COMPARTMENT.
 - SEE DETAILS THIS SHEET FOR SMOKE DETECTOR AND ANNUNCIATOR WIRING.
 - SET ALL THERMOSTATS FOR AUTO CHANGEOVER.
 - PROVIDE PLASTIC ENGRAVED LABEL AT ALL NEW SENSORS WITH 1/4" HIGH WHITE LETTERING ON BLACK BACKGROUND, I.E. "AC#2 HUMIDITY SENSOR" OR "AC#2 TEMP SENSOR". PLACE LABELS ON WALL ADJACENT TO DEVICE. DO NOT APPLY DIRECTLY TO DEVICE.

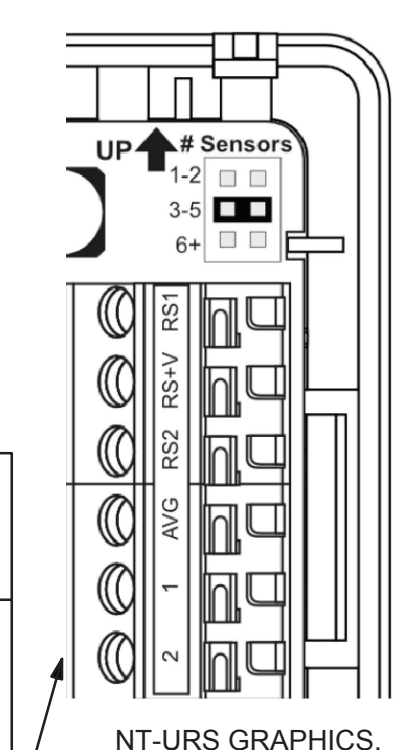
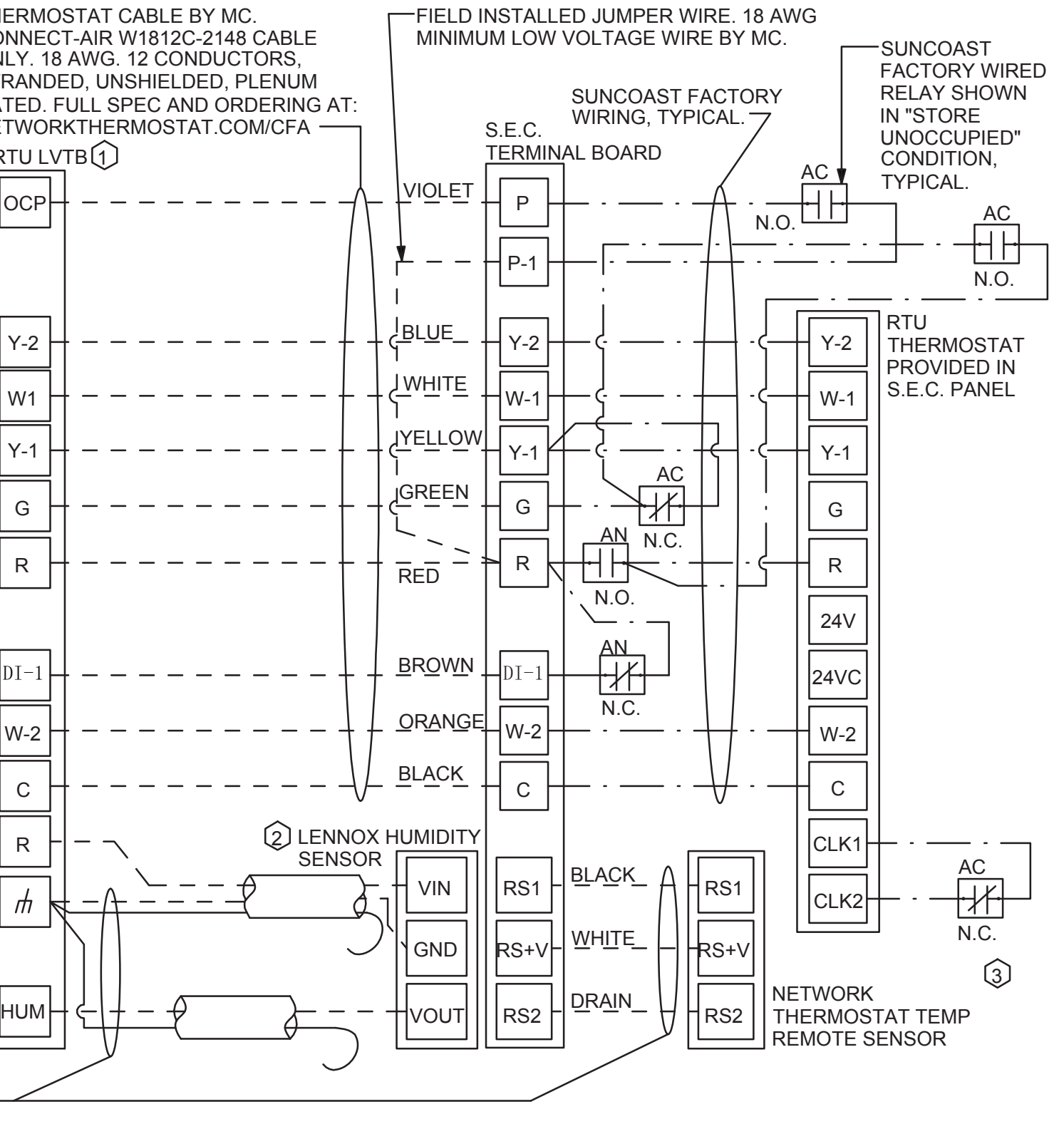
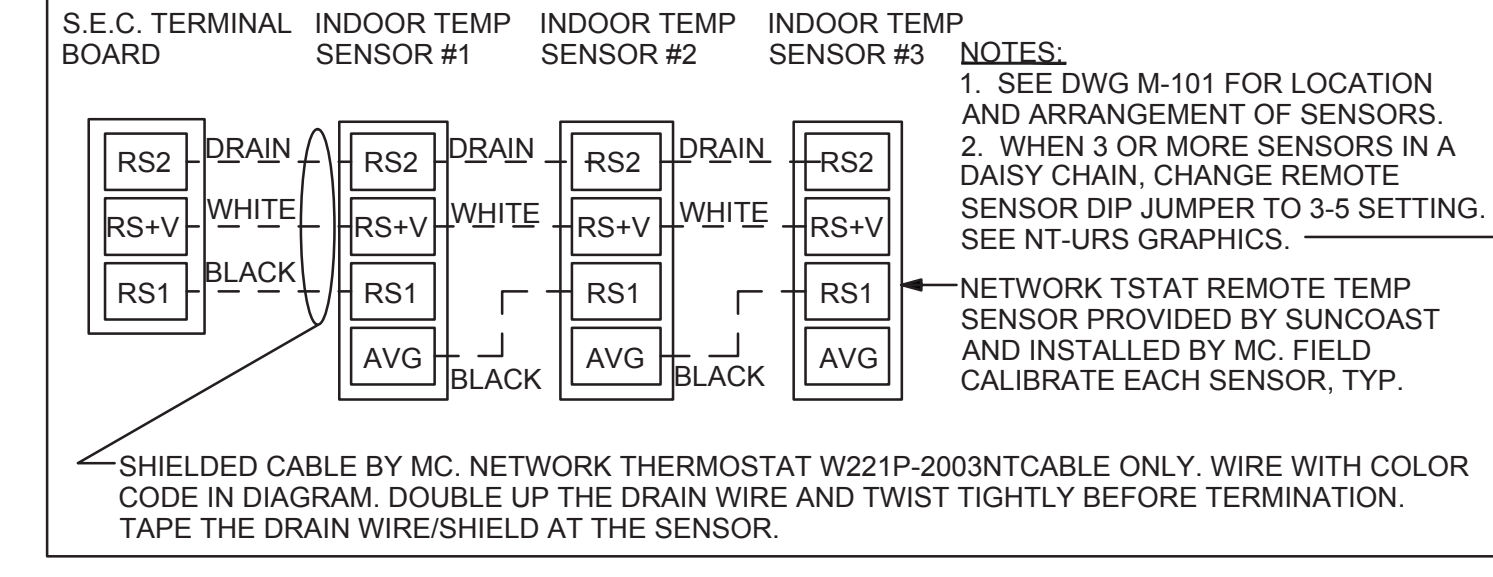
- KEYED NOTES:
- LOW VOLTAGE WIRING TO RTU TO BE ROUTED TO UNIT THRU FACTORY WIREWAY.
 - HUMIDITROL UNITS ONLY: WIRING TO HUMIDITY SENSOR TO BE MADE WITH TWO SEPARATE RUNS OF SHIELDED TWISTED PAIR. TERMINATE SHIELD WIRES AT TB-1, LEAVE OPEN AT SENSOR.
 - NETWORK TSTAT REMOTE TEMP SENSOR PROVIDED BY SUNCOAST AND INSTALLED BY MC. SENSOR IS INTENDED TO BE SURFACE MOUNTED AND DOES NOT REQUIRE A SINGLE GANG BOX OF CONDUIT. FIELD CALIBRATE EACH SENSOR.

- LEGEND
- S.E.C. SUNCOAST ENVIRONMENTAL CONTROLS (SUPPLIER OF TEMP/FAN CONTROL PANEL) LOCATED IN KITCHEN
 - MC MECHANICAL CONTRACTOR
 - AC SUNCOAST RELAY FACTORY INSTALLED AND WIRED IN CFA-500 PANEL. ENERGIZED BY PUTTING STORE SWITCH IN "STORE OCCUPIED" POSITION.
 - AN SUNCOAST RELAY FACTORY INSTALLED AND WIRED IN CFA-500 PANEL. DENERGIZED WHEN ANSUL FIRE SUPPRESSION SYSTEM IS ACTIVATED, AS NOTED.
 - ALL LOW VOLTAGE CABLING BY MC. ONLY USE CABLE SPECIFIED. NO SUBSTITUTIONS.
 - - - LOW VOLTAGE WIRING BY S.E.C.
 - LINE VOLTAGE BY ELECTRICIAN OR S.E.C.

SHIELDED CABLE BY MC. NETWORK THERMOSTAT W221P-2003NT CABLE ONLY. 22AWG, 1-PAIR, TWISTED, SHIELDED, WITH DRAIN. PLENUM RATED. NO SUBSTITUTIONS. AFTER DRAIN WIRE TERMINATION, TAPE/INSULATE ALL EXPOSED DRAIN/SHIELD AT SENSOR. DO NOT CONNECT SHIELD/DRAIN WIRE.

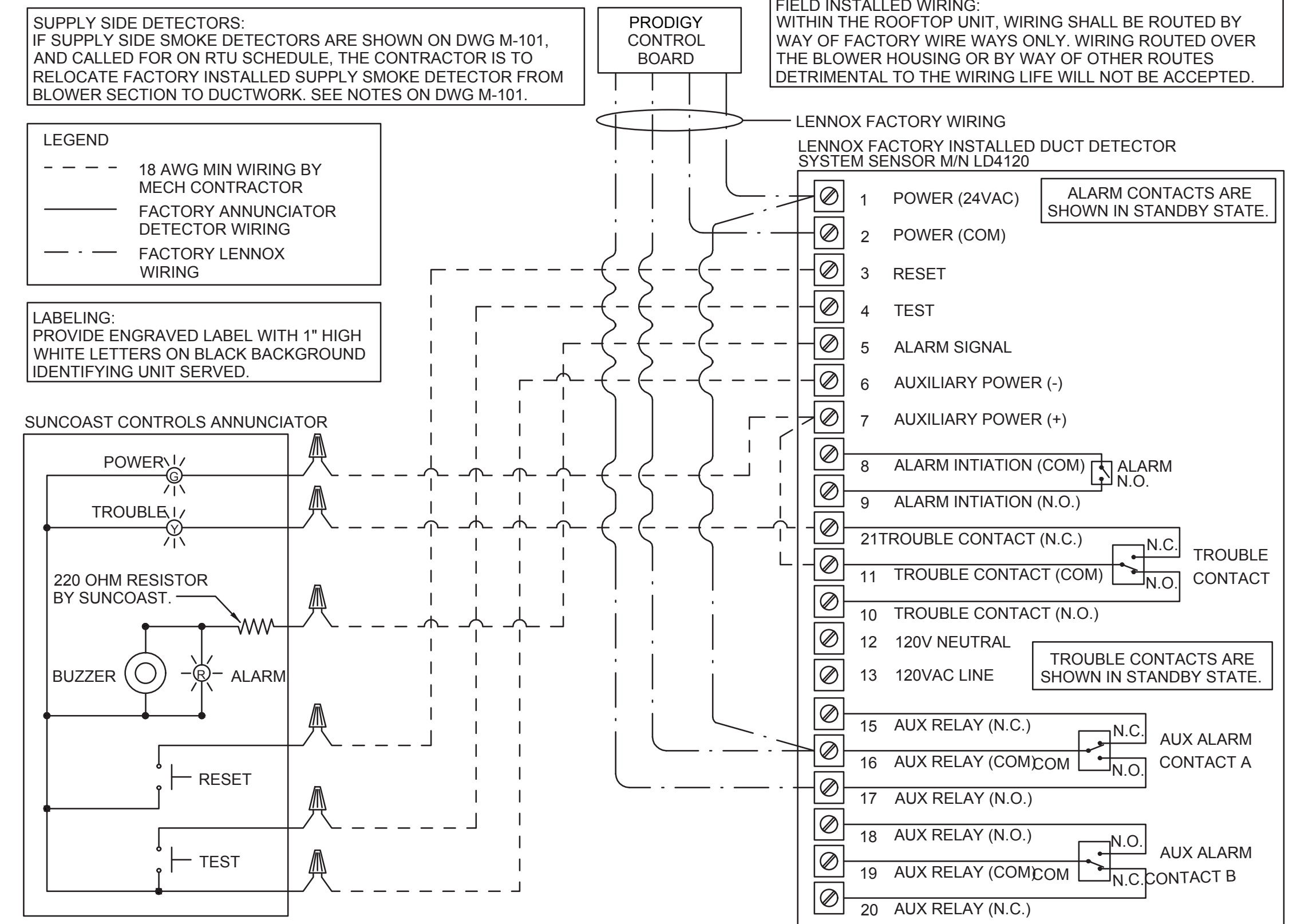
2 ROOFTOP UNIT CONTROL WIRING -LENNOX
NOT TO SCALE

AVERAGING SENSORS (WHERE SHOWN ON PLANS)



- LENNOX PRODIGY 2.0 OR CORE UNIT CONTROLLER SETTINGS:
- FOR ALL RTUs EXCEPT AC#1, ELIMINATE THE MORNING WARMUP/OSA DAMPER DELAY. THE MENU PATH IS:
• MAIN MENU > SETTINGS > RTU OPTIONS > EDIT PARAMETERS
FOR GAS HEAT UNITS (LGT):
• CHANGE PARAMETER #65 SETTING TO 1
FOR ELECTRIC HEAT UNITS (LCT):
• CHANGE PARAMETER #58 TO 1
 - ON UNIT AC#1
• FOR GAS HEAT (LG) LEAVE AT 60-MINUTE DEFAULT
• FOR ELECTRIC HEAT (LC) CHANGE VALUE TO EQUAL 90-MINUTE
 - FOR HUMIDITROL UNITS THE MENU PATH IS:
• MAIN MENU > SETTINGS > RTU OPTIONS > DEHUMIDIFIER MODE > NO CONDITIONS
SELECT LOCAL SENSOR AND SAVE
• SET POINT: 60%
• DEHUMID DEADBAND: 2%
 - FOR ALL UNITS, SET BLOWER TO OPERATE AT ONE AIRFLOW FOR ALL MODES. MENU PATH IS:
• MAIN MENU > INSTALL > TEST AND BALANCE > BLOWER
• SET ALL HEATING AND COOLING CFM VALUES TO THE SAME VALUE AS SCHEDULED.
• ADJUST AIRFLOW BY MEANS OF ADJUSTABLE BLOWER MOTOR SHEAVE.

- LENNOX FRESH AIR HEATING SETUP WHEN SPECIFIED:
- INSTALL FRESH AIR TEMPERING KIT WIRING HARNESS AS RECOMMENDED BY LENNOX.
 - LOCATE SUPPLY AIR TEMPERATURE SENSOR IN SUPPLY DUCT DOWNSTREAM OF FIRST ELBOW. SECURE WIRING TO DUCT OR STRUCTURE WITH RUBBER COATED CLAMPS. DO NOT RUN WIRING INSIDE DUCT WORK. PROTECT ALL WIRING PENETRATIONS WITH RUBBER GROMMETS.
 - FOR PRODIGY 2.0 OR CORE UNIT CONTROLLER WITHIN MAIN MENU GO TO SET-UP TO TEST AND BALANCE TO DAMPER. FOLLOW MENU PATH SET FRESH AIR HEATING ENABLE TO "YES" SET FAH SETPOINT TO 66F THIS WILL TEMPER SUPPLY AIR BELOW 66F WITH INTERMITTENT HEATING WHEN THERMOSTAT IS NOT ACTIVELY CALLING FOR HEAT.
 - CHANGE PRODIGY 2.0 OR CORE UNIT CONTROLLER PARAMETER #157, WITHIN MAIN MENU GO TO SETTINGS TO RTU OPTIONS TO EDIT PARAMETER VALUE TO 14 FOR A 14F FAH DEADBAND AND SAVE.
 - CHANGE PRODIGY 2.0 OR CORE UNIT CONTROLLER PARAMETER #158, WITHIN MAIN MENU GO TO SETTINGS TO RTU OPTIONS TO EDIT PARAMETER ADJUST VALUE TO 300 SECONDS FOR 5 MINUTE CYCLE TIME AND SAVE.



1 SMOKE DETECTOR AND ANNUNCIATOR WIRING DIAGRAM -LENNOX
NOT TO SCALE

