



Chick-fil-A

Chick-fil-A
5200 Buffington Road
Atlanta, Georgia
30349-2998

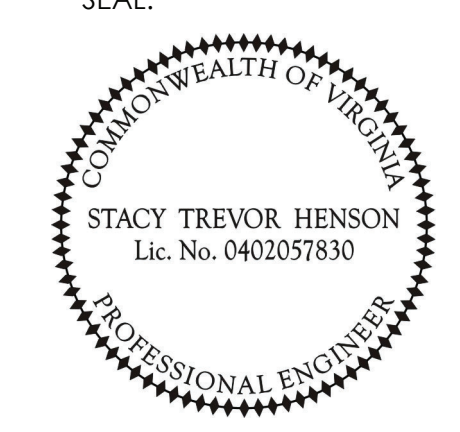
INTERPLAN

INTERPLAN LLC
AR0011595
CA 8660

ARCHITECTURE
ENGINEERING
PERMITTING

220 E. CENTRAL PKWY, STE 4000
ALFAMONTE SPRINGS, FL 32701
407.645.5038

SEAL:



CHICK-FIL-A
Parham Road
1529 N. Parham Road,
Richmond, VA 23229

FSR#02554

BUILDING TYPE / SIZE: S08-E

RELEASE: 08/24/2022

PRINTED FOR: CONSTRUCTION

REVISION SCHEDULE

NO. DATE DESCRIPTION

4 01/25/2023 REQ. SOW UPDATES

CONSULTANT PROJECT # 2020.0750

DATE 08/24/22

DRAWN BY AM

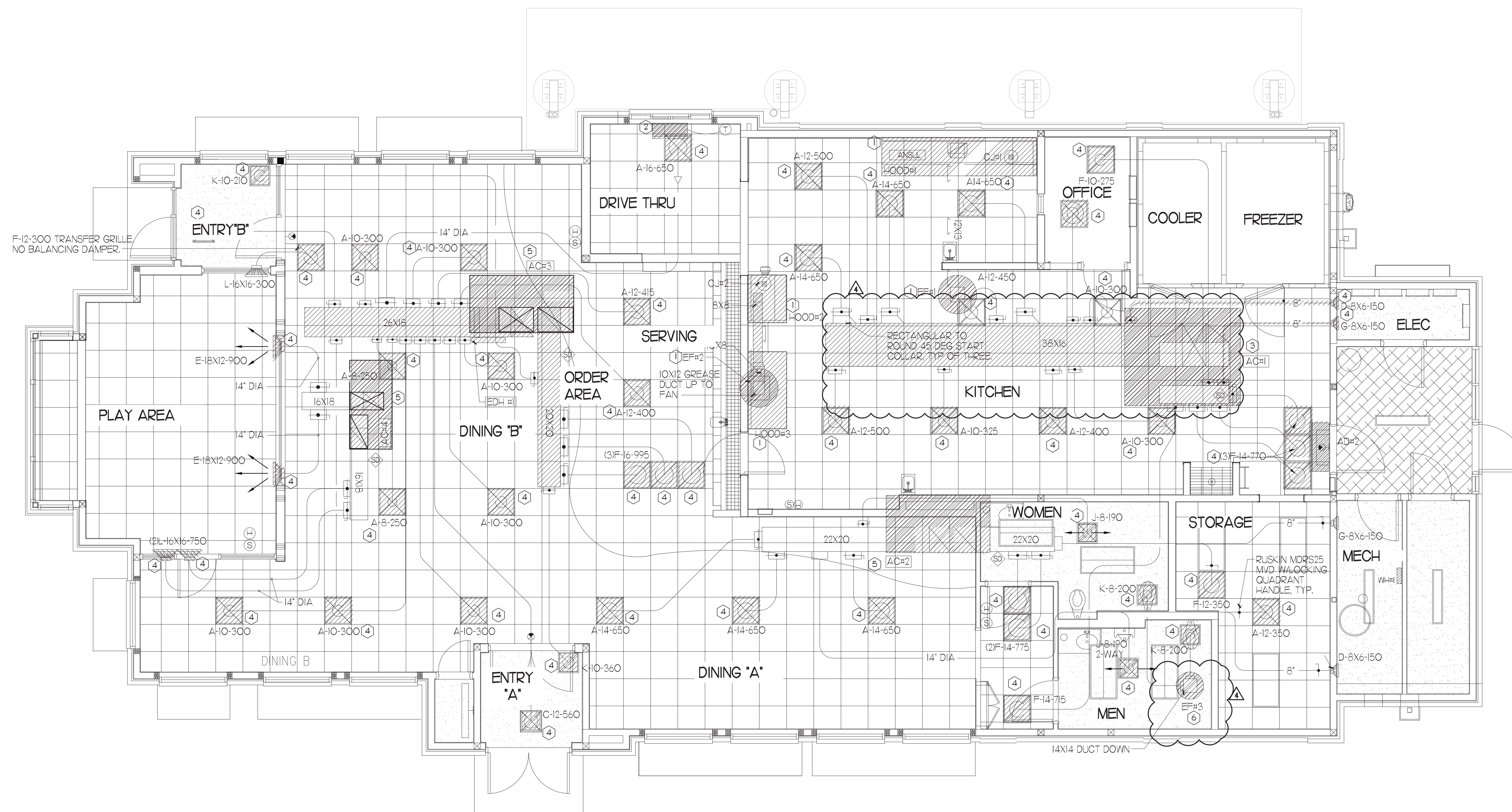
CHECKED BY DAK

Information contained on this drawing and all digital files produced for above named project may not be reproduced or modified without express written or verbal consent from the project manager.

SHEET MECHANICAL DEMO PLAN

SHEET NUMBER

M1.0



MECHANICAL DEMOLITION PLAN
1/4" = 1'-0"
PROJECT NORTH TRUE NORTH

DEMOLITION LEGEND

- EXISTING EQUIPMENT, DUCT, AIR DEVICES ETC. TO REMAIN INTACT.
- EXISTING EQUIPMENT, DUCT, AIR DEVICES ETC. TO BE DEMOLISHED.

DEMOLITION NOTES

- CONTRACTOR IS RESPONSIBLE FOR OBTAINING ALL NECESSARY PERMITS AND PAYING ALL APPLICABLE FEES.
- DISPOSAL OF EQUIPMENT AND MATERIALS REQUIRED TO BE REMOVED SHALL BE THE RESPONSIBILITY OF THE CONTRACTOR PERFORMING THE WORK.
- DE-ENERGIZE ALL ELECTRICAL CIRCUITS RELATED TO EQUIPMENT THAT WILL BE MOVED OR REMOVE PRIOR TO STARTING WORK. DE-ENERGIZE CIRCUITS SHALL BE PROTECTED WITH LOCKING DEVICES USING APPROPRIATE WARNING LABELS.
- MECHANICAL CONTRACTOR SHALL BE RESPONSIBLE FOR PATCHING ROOF AFTER REMOVAL OF EXISTING MECHANICAL EQUIPMENT. SEE ARCHITECTURAL DRAWINGS FOR ROOF PATCHING REQUIREMENTS.
- EXCEPT WHERE NOTED, EXISTING REMOTE TEMPERATURE AND/OR HUMIDITY SENSORS TO REMAIN. IF DURING RENOVATION PURPOSES CONTROLS SHALL BE TAKEN DOWN. MECHANICAL CONTRACTOR SHALL BE RESPONSIBLE FOR REINSTALLING AND TO PROVIDE ANY ADDITIONAL WIRING NEEDED.
- MECHANICAL CONTRACTOR SHALL PERFORM ROUTINE MAINTENANCE ON EXISTING ROOFTOP UNITS AND MAKE ANY NECESSARY REFRIGERANT WITH NO LEAKS, NEW BELTS AND REPLACE AND FAN MOTORS NECESSARY.
- DISCONNECT GAS PIPING FROM EXISTING ROOFTOP UNITS) TO BE REPLACED. PLUMBING CONTRACTOR WILL REMOVE EXISTING GAS PIPING TO BE DEMOLISHED.
- CONTRACTOR SHALL INDICATE SALVAGE VALUE IN BID FOR ROOFTOP UNITS BEING REPLACED.

DEMOLITION KEY NOTES

- DEMOLISH EXISTING KITCHEN HOOD, ALL ASSOCIATED GREASE DUCT, AND EXHAUST FAN ON ROOF. EXISTING EXHAUST FAN TO BE REPLACED. TURN OVER EXISTING EXHAUST FAN TO OWNER. COVER ROOF OPENING WEATHER-TIGHT FOR RE-USE. REFER TO SHEET MJI & M3I FOR FURTHER INFORMATION.
- EXISTING AIR CURTAIN TO BE REPLACED WITH NEW ADHI. REFER TO MJI AND M3I.
- EXISTING KITCHEN A/C UNIT TO DEMOLISHED. SEE SHEETS MJI AND M3I FOR FURTHER INFORMATION.
- DETACH AND DEMOLISH EXISTING AIR DEVICE SEE SHEET MJI FOR NEW AIR DEVICE LOCATIONS.
- EXISTING ROOFTOP UNIT TO BE REPLACED WITH NEW AS SCHEDULED ON SHEET M3I. SEE SHEETS MJI AND M3I FOR FURTHER INFORMATION.
- EXISTING RESTROOM EXHAUST FAN TO BE REPLACED. TURN OVER EXISTING EXHAUST FAN TO OWNER. COVER ROOF OPENING WEATHER-TIGHT FOR RE-USE. REFER TO SHEET MJI AND M3I FOR FURTHER INFORMATION.

FIELD VERIFY ALL CONDITIONS

NOTE AS NOTED IN THE SPECIFICATIONS, ALL WIRING LAYOUTS, PIPING LAYOUTS AND DUCT LAYOUTS ARE SCHEMATIC. EXACT LOCATIONS SHALL BE DETERMINED BY THE CONTRACTOR AND STRUCTURE OF THE BUILDING AND SHALL BE VERIFIED AND COORDINATED IN THE FIELD. EACH TRADE CONTRACTOR SHALL VERIFY WITH THE GENERAL CONTRACTOR THAT HE HAS THOROUGHLY REVIEWED AND COORDINATED ALL LOCATIONS AND ROUTINGS WITH ALL OTHER TRADES PRIOR TO FABRICATION OF CONDUITS, DUCTS, OR PIPING, AND START OF INSTALLATION OF SAME (INCLUDING SPRINKLER PIPING WHEN PRESENT ON JOB). ANY INSTALLATION OR CONSTRUCTION CONFLICTS WHICH OCCUR IN THE FIELD SHALL BE RESOLVED BY THE TRADE CONTRACTOR TO THE SATISFACTION OF THE OWNER AND ARCHITECT AND AT NO EXPENSE TO THE OWNER, ARCHITECT AND/OR GENERAL CONTRACTOR.

THE CONTRACTOR SHALL CONTACT THE ARCHITECT, ENGINEER OR OWNER PRIOR TO BIDDING FOR INTERPRETATIONS AND CLARIFICATIONS OF THE DESIGN AND INCLUDE IN HIS BID ALL COSTS TO MEET THE DESIGN INTENT, CLARIFICATIONS MADE BY THE ARCHITECT, ENGINEER OR OWNER AFTER BIDDING WILL BE FINAL AND SHALL BE IMPLEMENTED AT CONTRACTORS COST.

BIDDING CONTRACTORS SHALL HAVE A WORKING KNOWLEDGE OF LOCAL CODES AND ORDINANCES AND SHALL INCLUDE IN THEIR BIDS THE COSTS FOR ALL WORK INSTALLED IN STRICT ACCORDANCE WITH GOVERNING CODES, THE PLANS AND SPECIFICATIONS NOT WITHSTANDING, THE CONTRACTOR SHALL ALERT ARCHITECT, ENGINEER OR OWNER OF ANY APPARENT DISCREPANCIES BETWEEN GOVERNING CODES AND DESIGN INTENT.

LEGEND

SYMBOL	DESCRIPTION	SYMBOL	DESCRIPTION
A-12-400	TYPE - NECK SIZE - CFM	EF#1	EXHAUST FAN #1 (TYP)
[Symbol]	SPIN-IN FITTING WITH MANUAL BALANCING DAMPER, WITHOUT SCOOP	ACH#1	AIR CONDITIONING UNIT #1 (TYP)
[Symbol]	SPIN-IN HARD O FLEXIBLE O DIFFUSER	[Symbol]	RETURN/EXHAUST (TYP)
[Symbol]	EXISTING EQUIPMENT, DUCT, & AIR DEVICE	[Symbol]	SUPPLY DIFFUSER, SQ FACE (TYP)
[Symbol]	NEW EQUIPMENT, DUCT, & AIR DEVICE	①	PLAN NOTE REFERENCE
[Symbol]	REMOTE TEMPERATURE SENSOR	[Symbol]	MANUAL VOLUME DAMPER
[Symbol]	HUMIDITY SENSOR	[Symbol]	DIRECTION OF THROW ON DIFFUSER
[Symbol]	STROBE AUDIO/VISUAL ALARM-ANNUNCIATOR	[Symbol]	CO2 SENSOR
[Symbol]	DUCT SIZE (REVERSE FOR ELEVATION VIEWS)	[Symbol]	PULL STATION
[Symbol]	1ST NUMBER - HORIZONTAL DIMENSION	[Symbol]	CONTROL PANEL
[Symbol]	2ND NUMBER - VERTICAL DIMENSION	[Symbol]	SMOKE DETECTOR
[Symbol]	POINT OF DISCONNECTION		
[Symbol]	POINT OF CONNECTION		
[Symbol]	INDICATES 2-WAY DIFFUSER. INDICATES BLANKED OFF SIDE		

GAS FIRED ROOFTOP UNIT SCHEDULE

MARK	TONNAGE	AREA SERVED	COOLING CAPACITY (MBH)		HEATING CAPACITY (MBH)		FAN SECTION (CFM)		EXISTING MANUFACTURER/ MODEL	NEW MANUFACTURER/ MODEL	ARI RATINGS	PERCENTAGE OF OUTDOOR AIR	ELECTRICAL DATA		REMARKS	APPROX NET WEIGHT INCLUDING OPTIONS	
			TOTAL	SENS	INPUT	SUPPLY	STAGES	STAGES					HP	PSR			VOLTS/PHASE
NEW ACH	25	KITCHEN	2945	2868	4800	3840	2	8,750	1750	10	10	10	10	142	150	13.44/78.9/0J12J4	297 LBS
NEW ACH2	65	DINING A	1038	787	2400	1920	2	3,300	700	2	28	28	28	142	150	13.44/78.9/0J12J4	1,430 LBS
NEW ACH3	20	DINING B	238.0	173.7	360.0	288.0	2	640.0	1300	7.5	85	85	85	142	150	13.44/78.9/0J12J4	2,810 LBS
NEW ACH4	5	PLAYGROUND	63.3	47.5	150.0	120.0	2	1,800	400	1	65	65	65	142	150	13.44/78.9/0J12J4J5	859 LBS
NEW ACH5	3	MULTI-PURPOSE	35.8	27.6	65.0	52.0	1	1,000	170	5	65	65	65	142	150	13.44/78.9/0J12J3J4J5	796 LBS

ALL NEW ROOFTOP UNITS SHALL INCLUDE A HUMIDITY CONTROL OPTION WITH FACTORY WALL MOUNTED HUMIDITY SENSOR.

- PROVIDE DIFFERENTIAL ENTHALPY ECONOMIZER WITH POWER EXHAUST.
- PROVIDE DIFFERENTIAL ENTHALPY ECONOMIZER WITH BAROMETRIC EXHAUST.
- PROVIDE NEW 1/4" HSI ROOF CURB.
- SEE DETAIL M42 FOR SETTING OF PROXY MG AND M-8 IMC BOARD CONTROL/CONTROL PARAMETERS BY MC.
- PROVIDE FACTORY INSTALLED AND UNIT POWERED 16V GFI SERVICE OUTLET.
- PROVIDE FACTORY INSTALLED 16V GFI SERVICE OUTLET.
- PROVIDE FACTORY INSTALLED RETURN AND SUPPLY SIDE SMOKE DETECTOR.
- PROVIDE FACTORY INSTALLED NON-FUSED DISCONNECT.
- PROVIDE 7" MEV & THROW AWAY FILTERS.
- PROVIDE HINGED PANELS FOR FILTER ACCESS, FAN MOTOR ACCESS, COMPRESSOR ACCESS AND CONTROL COMPARTMENT ACCESS.
- ADJUST GAS MANIFOLD PRESSURE AT LOCATIONS WHERE ELEVATION EXCEEDS 2000' ABOVE SEA LEVEL AS RECOMMENDED BY MANUFACTURER.
- PROVIDE FACTORY COIL HALL GUARD, FIELD INSTALLED.
- PROVIDE UNIT WITH HEAVY BLOWER.
- PROVIDE HUMIDITY CONTROL OPTION WITH FACTORY WALL MOUNTED HUMIDITY SENSOR (STATES OF CA AND AZ EXCLUDED).
- PROVIDE FACTORY INSTALLED BELT TENSIONER.
- REPLACE EXISTING LENNOX ROOFTOP UNIT WITH NEW SAME SIZE WITH THE SAME MANUFACTURER LENNOX PLACED ON SAME LOCATION ON EXISTING CURB.
- EXISTING UNIT TO REMAIN.

CONTRACTOR SHALL VERIFY EXACT ELECTRICAL CONNECTIONS, WIRE SIZES, BREAKERS, DISCONNECT, ETC. FOR THE NEW ROOFTOP UNITS PRIOR TO ORDERING AND BID.

TEST AND BALANCE REPORT SHALL BE DONE PRIOR TO STORE TURNOVER AND SUBMITTED TO CFA'S CONSTRUCTION MANAGER AND TO ENGINEER OF RECORD.

NEW HVAC EQUIPMENTS SHALL BE INSTALLED IN ACCORDANCE WITH THE MANUFACTURER'S INSTALLATION INSTRUCTIONS INCLUDING CLEARANCES, & SHALL MEET ALL LOCAL AND STATE CODE REQUIREMENTS. INSTRUCTIONS SHALL BE ON SITE AND AVAILABLE FOR ALL INSPECTIONS, SERVICE, REPAIR, OR REPLACEMENT.

NEW ROOFTOP UNITS ONLY, MECHANICAL CONTRACTOR SHALL RELOCATE THE FACTORY INSTALLED SUPPLY SIDE SMOKE DETECTOR FROM THE BLOWER SECTION TO THE SUPPLY DUCT DROP ABOVE THE FIRST 90 DEGREE DUCT FITTING.

NEW ROOFTOP UNITS ONLY, THE MECHANICAL CONTRACTOR SHALL SPLICE NEW PLENUM RATED CABLE BETWEEN THE FACTORY SMOKE DETECTOR AND THE FACTORY JACK PLUG. THE NEW WIRING SHALL BE ROUTED THRU THE ROOFTOP UNIT BASEPANEL RACEWAY. SPLICES SHALL BE JOINED WITH CRIMP ON FITTINGS AND HEAT SHRINK JACKETS.

OUTDOOR AIR CALCULATION

ROOM NUMBER & NAME	AREA SQ. FT.	NO. OF PEOPLE	REQD OA CFM/PERSON	REQD OA CFM/SQ FT	TOTAL OSA	REQD EXHAUST AIR PER FIXTURE	REQD OSA AC-1	REQD OSA AC-2	REQD OSA AC-3	REQD OSA AC-4	REQD OSA AC-5
KITCHEN	1267	25	7.50	0.12	339.5		339.5				
STORAGE	12	0	5.00	0.06	0.7				0.7		
RR VESTIBULE	75	0	5.00	0.06	4.5				4.5		
MENS RR	91	0	0.00	0.00	0.0	50/70					
WOMENS RR	106	0	0.00	0.00	0.0	50/70					
DINING A	224	16	7.50	0.18	160.3				160.3		
MECH ROOM	23	0	0.00	0.00	0.0						
DRIVE THRU	334	2	7.50	0.18	75.1				75.1		
SERVING AREA	157	4	7.50	0.18	58.3				58.3		
WAITING AREA	292	0	5.00	0.06	17.5				17.5		
N AND S DINING B	864	68	7.50	0.18	665.5				665.5		
ENTRY 'A'	46	0	5.00	0.06	28				28		
ENTRY 'B'	68	0	5.00	0.06	41				29		
W. DINING B	287	20	7.50	0.18	201.7					201.7	
MULTI-PURPOSE	252	0	5.00	0.06	15.1						47.7
OFFICE	54	1	5.00	0.06	8.2						8.2
TOTALS						100/140	339.50	165.50	822.0	201.70	55.9
							424.38	206.88	1027.63	252.13	69.9
							1,750	700	1,300	400	170

OUTSIDE AIR BASED ON THE 2018 INTERNATIONAL MECHANICAL CODE & PER ASHRAE 62.1-2018 MINIMUM VENTILATION RATES. ZONE AIR DISTRIBUTION EFFECTIVENESS BASED OFF 2018 INTERNATIONAL MECHANICAL CODE TABLE 403.3.11.2.

AIR DOOR SCHEDULE

MARK	CFM	VELOCITY	HEATING CAP	HP	AREA SERVED	MODEL	MANUFACTURER	REMARKS
AD1	1765	3670 FPM	10 KW	3/4	DRIVE THRU	CH4-H48E	POWERED-AIR	1235
AD2	3267	428	NA	3/4	REAR DOOR	DBT-H48	POWERED-AIR	4
AD3	1977	3445 FPM	10 KW	3/4	DRIVE THRU	CH4-H36E	POWERED-AIR	123

NOTES: CHICK-FIL-A HAS A NATIONAL ACCOUNT WITH TOM BARRON COMPANY FOR THE AIR DOORS. THE MECHANICAL CONTRACTOR SHALL PURCHASE THE AIR DOORS DIRECTLY FROM TOM BARRON COMPANY. CONTACT MR. SCOTT GEORGE AT 404-39-1000 FOR PRICING AND AVAILABILITY. AIR DOORS NOT PURCHASED THRU TOM BARRON COMPANY WILL NOT BE ACCEPTED.

REMARKS: 1. FACTORY PROVIDED, WIRED, AND UNIT MOUNTED SPEED CONTROLLER LOCATED ABOVE CEILING. 2. FACTORY WIRED DISCONNECT. 3. FACTORY PROVIDED FIELD INSTALLED BY MC. REMOTE W ALL SWITCHES FOR HEATING ON/OFF AND FAN ON/OFF SWITCH. SEE DETAIL, AIR CURTAIN WIND DIAGRAM. 4. FACTORY PROVIDED MAGNETIC DOOR CONTACT WITH FACTORY INSTALLED LOW VOLTAGE CONTROLS LOCATED IN AIR DOOR CABINET. 5. PROVIDE WITH A DIVERTER BOX.

EXHAUST FAN SCHEDULE

MARK	CFM	ESP	RPM	TP SPEED (FFS)	HP	AREA SERVED	MODEL	MANUFACTURER	REMARKS
NEW EF#1	193	.65	964	4364	1/2	HOOD#1	16V5B	LOREN COOK	12.3,4,5,6
NEW EF#2	701	.75	1238	4558	1/2	HOOD#2	16V5B	LOREN COOK	12.3,4,5,6
NEW EF#3	400	.375	1294	3,071	1/8	RESTROOMS	ACED-9003	LOREN COOK	27.8,9,10,11
NEW EF#4	701	.75	1298	4661	1/2	HOOD#3	16V5B	LOREN COOK	12.3,4,5,6

NOTES: GREASE EXHAUST FAN RPM BASED ON 80 DEGREE F AIR AT 1000 FEET ABOVE SEA LEVEL. GREASE EXHAUST FANS TO BE UL LISTED. CHICK-FIL-A HAS A NATIONAL ACCOUNT WITH TOM BARRON COMPANY FOR THE FAN/CURB PACKAGE. THE MECHANICAL CONTRACTOR IS REQUIRED TO PURCHASE THE FAN/CURB PACKAGE DIRECTLY FROM TOM BARRON COMPANY. CONTACT MR. SCOTT GEORGE AT 404-39-1000 FOR PRICING AND AVAILABILITY. FANS AND CURBS NOT PURCHASED THRU TOM BARRON COMPANY WILL NOT BE ACCEPTED.

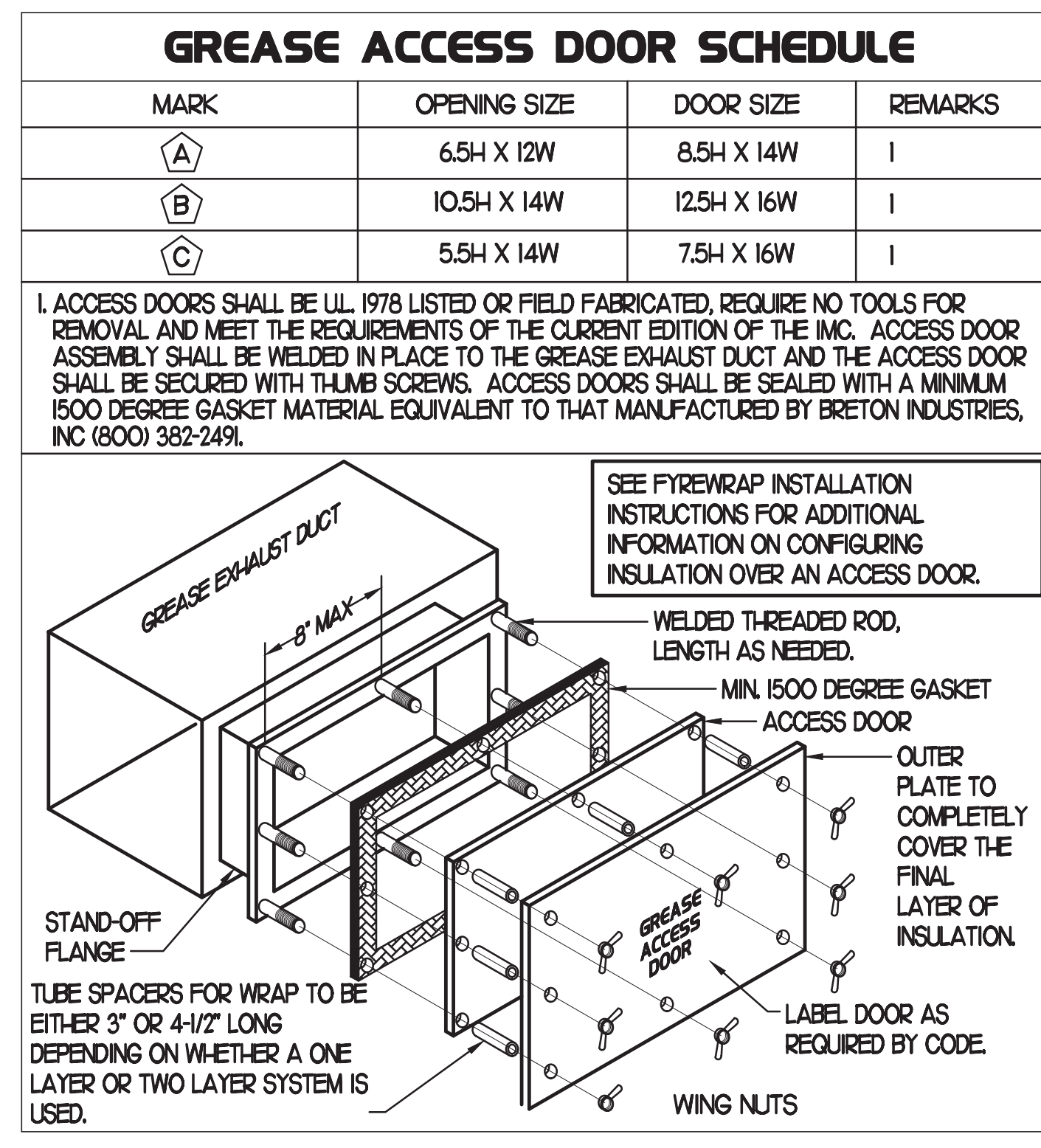
REMARKS: 1. PROVIDE FACTORY 1'-0" BASE CURB AND EXTENSION. 2. PROVIDE FACTORY INSTALLED, PRE-WIRED, NEMA 3 NON-FUSED DISCONNECT. 3. PROVIDE FACTORY INSTALLED HINGED BASE KIT. 4. PROVIDE AND INSTALL ROOFTOP SOLUTIONS 62 DWP GUARD. MECHANICAL CONTRACTOR TO CONTACT ROOFTOP SOLUTIONS AT 800-93-7034. 5. PROVIDE FACTORY INSTALLED HELICAL SPRING AUTOMATIC BELT TENSIONER. 6. INTEGRAL THERMAL OVERLOAD WITH AUTOMATIC RESET. 7. PROVIDE BROSSCREEN. 8. BACKDRAFT DAMPER IN DUCT BY MECHANICAL CONTRACTOR. 9. STARTER BY ELECTRICAL CONTRACTOR. INTERLOCK WITH LIGHTS BY ELECTRICAL CONTRACTOR. 10. PROVIDE FACTORY INSTALLED AND WIRED SPEED CONTROLLER. 11. MOUNT TO EXISTING CURB. FIELD VERIFY CONDITION OF CURB PRIOR TO INSTALLATION.

AIR DEVICE SCHEDULE

MARK	DESCRIPTION	LOCATION	NECK SIZE	FACE SIZE	FRAME TYPE	REMARKS
A	PRICE MODEL APDC ALUMINUM SUPPLY AIR DIFFUSER WITH INDIVIDUALLY ADJUSTABLE CURVED AIR PATTERN CONTROLLERS.	DINING AREA KITCHEN	VARIES	24X24	LAY-IN	17
C	PRICE MODEL 80 EGGRATE RETURN AIR GRILLE WITH ADJUSTABLE AIR PATTERN CONTROLLERS.	ENTRYS	14X14	19X19	BEVELLED	13,5,6
E	PRICE MODEL 22 DOUBLE DEFLECTION ALUMINUM SIDEWALL SUPPLY GRILLE FRONT BLADE PARALLEL TO LONG SIDE.	UTILITY	18X10	20X12	SURFACE	1
F	PRICE MODEL 80 EGGRATE RETURN AIR GRILLE WITH REMOVABLE WHITE CORE, FACTORY FLAT BLACK BACKPAN AND ROUND NECK.	DINING/OFFICE KITCHEN	SEE PLAN	24X24	LAY-IN	17
H	PRICE MODEL APDC ALUMINUM SUPPLY AIR DIFFUSER WITH INDIVIDUALLY ADJUSTABLE CURVED AIR PATTERN CONTROLLERS.	OFFICE	12X12	24X24	LAY-IN	16,7
J	PRICE MODEL 80 EGGRATE RETURN AIR GRILLE WITH ADJUSTABLE AIR PATTERN CONTROLLERS.	RESTROOMS	10X10	15X15	BEVELLED	12,3,5,6
K	PRICE MODEL APDC ALUMINUM PERFORATED FACE RETURN AIR GRILLE.	RESTROOMS ENTRYS	14X14	16X16	SURFACE	14,5,6
L	PRICE MODEL 21 ALUMINUM SIDEWALL RETURN GRILLE, FRONT BLADE PARALLEL TO LONG SIDE.	UTILITY	12X12	14X14	SURFACE	1

NOTES: MECHANICAL CONTRACTOR SHALL PURCHASE THE AIR DEVICES DIRECTLY FROM TOM BARRON COMPANY. CONTACT MR. SCOTT GEORGE AT 404-39-1000, FOR PRICING AND AVAILABILITY. AIR DEVICES NOT PURCHASED THRU TOM BARRON COMPANY WILL NOT BE ACCEPTED.

REMARKS: 1. STANDARD OFF WHITE FINISH. 2. PROVIDE MODEL VCS3 NECK DAMPER. 3. SEE DRAWING M1 FOR THROW. 4. PROVIDE MODEL VCR7 NECK DAMPER ON GRILLES IN RESTROOMS. 5. PROVIDE BACKPAN MC TO SEAL JOINTS WITH Mastic AND INSULATE EXTERNALLY. 6. FIELD INSULATE BACKPAN AS SHOWN ON DETAIL IM-1. 7. FACTORY INSULATED R-6 BACKPAN.



KITCHEN PRESSURIZATION

RETURN AIR FROM SIDE DINING BACK TO KITCHEN	-700
EXISTING AC-1 OA (25 TON)-215 OA	+1750
NEW EF-1 KITCHEN HOOD	-193
NEW EF-2 KITCHEN HOOD	-701
NEW EF-4 KITCHEN HOOD	-701
TOTAL	-865

DINING PRESSURIZATION

NEW AC-2 OA (6.5 TON)-2125 OA	+700
NEW AC-3 OA (20 TON)-2031 OA	+1300
NEW AC-4 OA (5 TON)-2225 OA	+400
NEW AC-5 OA (3 TON)-1555 OA	+170
EXISTING EF-3 RESTROOM EXHAUST	-400
RETURN AIR FROM SIDE DINING BACK TO KITCHEN	-700
BUILDING POSITIVE PRESSURE TOTAL	+1470
BUILDING POSITIVE PRESSURE	+605



Chick-fil-A
5200 Buffington Road
Atlanta, Georgia
30349-2998

INTERPLAN
INTERPLAN LLC
AR0011595
CA 8660

ARCHITECTURE
ENGINEERING
PERMITTING

220 E. CENTRAL PKWY, STE 4000
ALAMONTE SPRINGS, FL 32701
407.645.5038



CHICK-FIL-A

Parham Road,
1529 N. Parham Road,
Richmond, VA 23229

FSR#02554

BUILDING TYPE / SIZE: S08-E
RELEASE: 08/24/2022
PRINTED FOR: CONSTRUCTION

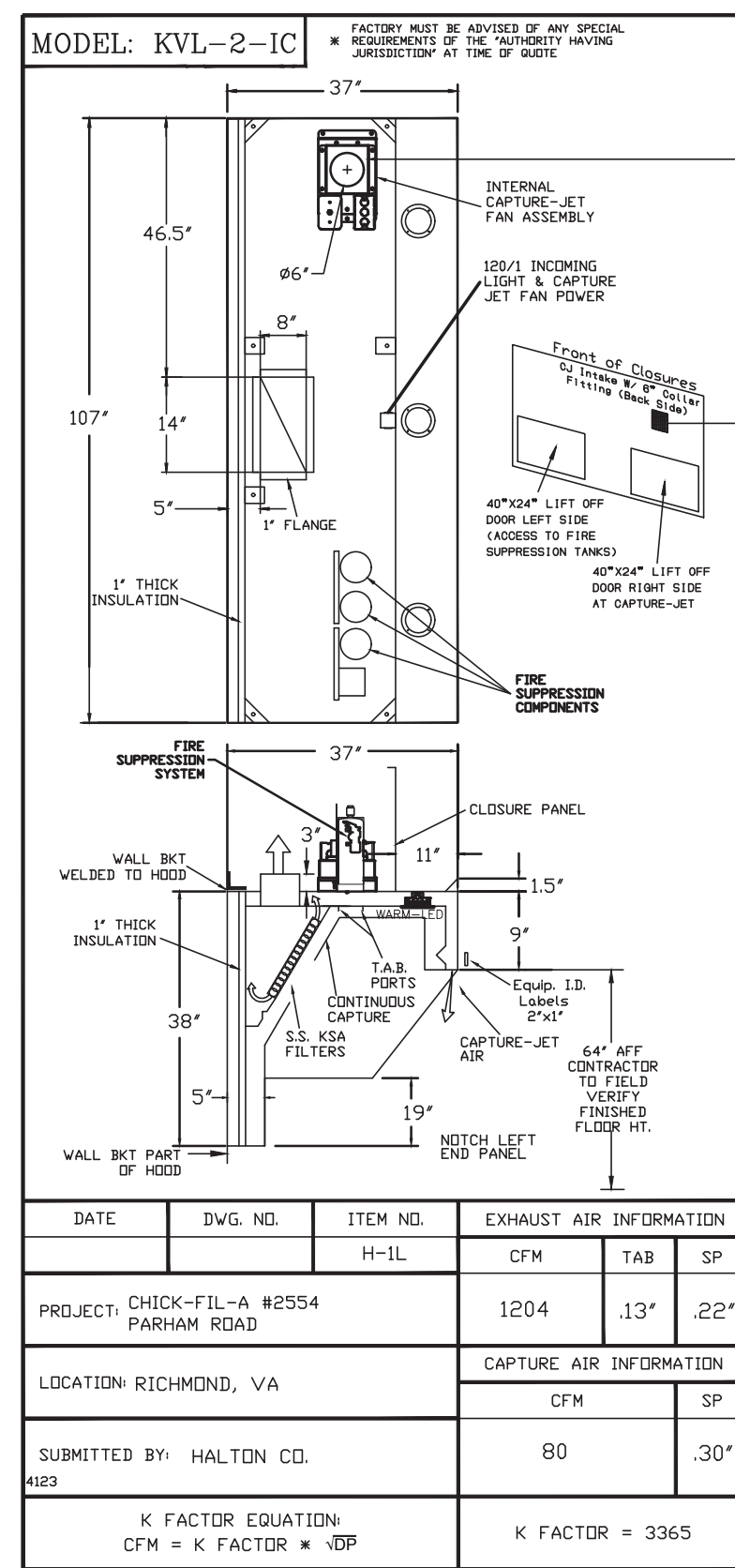
REVISION SCHEDULE

NO.	DATE	DESCRIPTION
1	01/25/2021	FEEDBACK REVISIONS
17	08/24/2022	RD COMMENTS

CONSULTANT PROJECT #: 2020.0759
DATE: 08/24/22
DRAWN BY: AM
CHECKED BY: DAK
Information contained on this drawing and all digital files produced for above named project may not be reproduced or transmitted in any form or by any means without express written or verbal consent from the project representative.

SHEET: MECHANICAL SCHEDULES

SHEET NUMBER
M3.1



STANDARD FEATURES	
S.S. FILTERS (KSA)	3
1/2" S.S. FILTERS (KSA)	1
CAPTURE-JET	*
STAND-OFF	*
L.E.D. LIGHTS	3

OPTIONS	
REMOTE SWITCH PANEL	*
FIRE PROTECTION	*
ETL LISTED V/D EXHAUST DAMPER	*
CEILING CLOSURE	2
STD. BACKSPLASH	2
INSULATED BACKSPLASH	*
KBD DAMPER	*

MATERIAL	
EXPOSED SURFACES	18 GA. S.S.
ALL 18 GA. S.S.	*

COMMENTS	
CLOSURE HEIGHT = 780 (TWO SIDES)	
CEILING CLOSURE RECESSED 1" FROM FRONT TO CREATE SHELF	
FRONT CLOSURE PANEL WITH 40"x24" LIFT OUT DOOR LEFT SIDE (ACCESS TO FIRE SUPPRESSION)	
48"x24" LIFT OUT DOOR RIGHT SIDE AT CAPTURE-JET WITH FRONT GJ INTAKE	
CONTINUOUS CAPTURE INTERNAL RIGHT END OUTPUT	
3" REAR STAND-OFF TO HAVE 1" THICK INSULATION	
NOTCHED LEFT END PANEL	

DATE	DWG. NO.	ITEM NO.	EXHAUST AIR INFORMATION
		H-IL	CFM T.A.B. SP
		1204	13' 22'

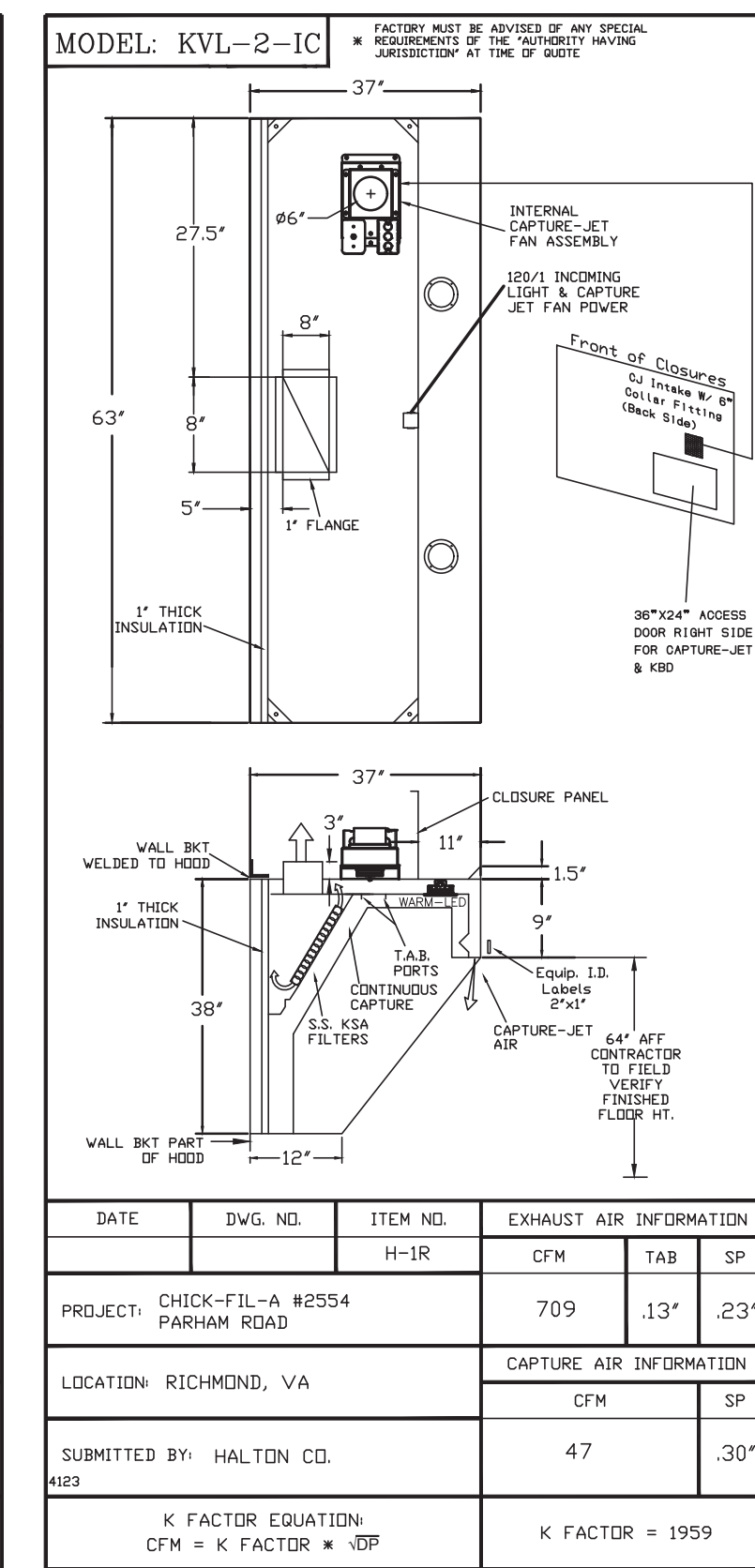
PROJECT	
CHICK-FIL-A #2554	PARHAM ROAD

LOCATION	
RICHMOND, VA	CAPTURE AIR INFORMATION
	CFM SP

SUBMITTED BY	
HALTON CD	80

K FACTOR EQUATION
CFM = K FACTOR * HP

K FACTOR = 3365



STANDARD FEATURES	
S.S. FILTERS (KSA)	3
1/2" S.S. FILTERS (KSA)	1
CAPTURE-JET	*
STAND-OFF	*
L.E.D. LIGHTS	2

OPTIONS	
REMOTE SWITCH PANEL	*
FIRE PROTECTION	*
ETL LISTED V/D EXHAUST DAMPER	*
CEILING CLOSURE	2
STD. BACKSPLASH	2
INSULATED BACKSPLASH	*
KBD DAMPER	*

MATERIAL	
EXPOSED SURFACES	18 GA. S.S.
ALL 18 GA. S.S.	*

COMMENTS	
CLOSURE HEIGHT = 780 (TWO SIDES)	
CEILING HEIGHT = ADVISE	
CEILING CLOSURE RECESSED 1" FROM FRONT TO CREATE SHELF	
30"x24" ACCESS DOOR RIGHT SIDE FOR ACCESS TO CAPTURE-JET WITH FRONT GJ INTAKE & KBD	
CONTINUOUS CAPTURE INTERNAL LEFT END OUTPUT	
3" REAR STAND-OFF TO HAVE 1" THICK INSULATION	
EQUIPMENT COVERED	13' PRESSURE FRAMES

DATE	DWG. NO.	ITEM NO.	EXHAUST AIR INFORMATION
		H-IR	CFM T.A.B. SP
		709	13' 23'

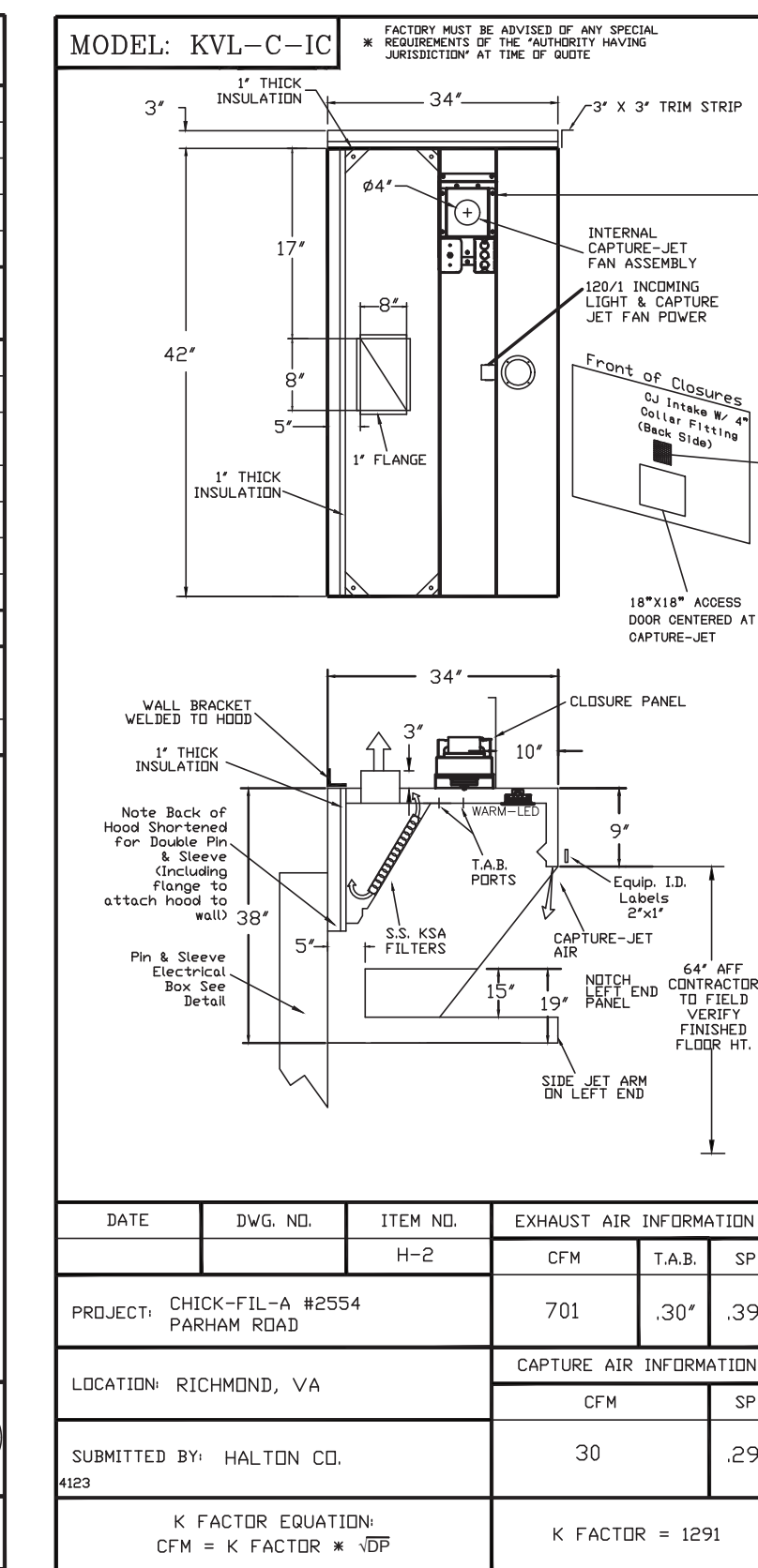
PROJECT	
CHICK-FIL-A #2554	PARHAM ROAD

LOCATION	
RICHMOND, VA	CAPTURE AIR INFORMATION
	CFM SP

SUBMITTED BY	
HALTON CD	47

K FACTOR EQUATION
CFM = K FACTOR * HP

K FACTOR = 1959



STANDARD FEATURES	
S.S. FILTERS (KSA)	2
1/2" S.S. FILTERS (KSA)	1
CAPTURE-JET	*
STAND-OFF	*
L.E.D. LIGHTS	1

OPTIONS	
REMOTE SWITCH PANEL	*
FIRE PROTECTION	*
ETL LISTED V/D EXHAUST DAMPER	*
CEILING CLOSURE	2
STD. BACKSPLASH	2
INSULATED BACKSPLASH	*
KBD DAMPER	*

MATERIAL	
EXPOSED SURFACES	18 GA. S.S.
ALL 18 GA. S.S.	*

COMMENTS	
CLOSURE HEIGHT = 780 (TWO SIDES)	
CEILING HEIGHT = ADVISE	
CEILING CLOSURE RECESSED 1" FROM FRONT TO CREATE SHELF	
30"x24" ACCESS DOOR RIGHT SIDE FOR ACCESS TO CAPTURE-JET WITH FRONT GJ INTAKE	
CONTINUOUS CAPTURE INTERNAL LEFT END OUTPUT	
3" REAR STAND-OFF TO HAVE 1" THICK INSULATION	
EQUIPMENT COVERED	13' PRESSURE FRAMES

DATE	DWG. NO.	ITEM NO.	EXHAUST AIR INFORMATION
		H-2	CFM T.A.B. SP
		701	30' 39'

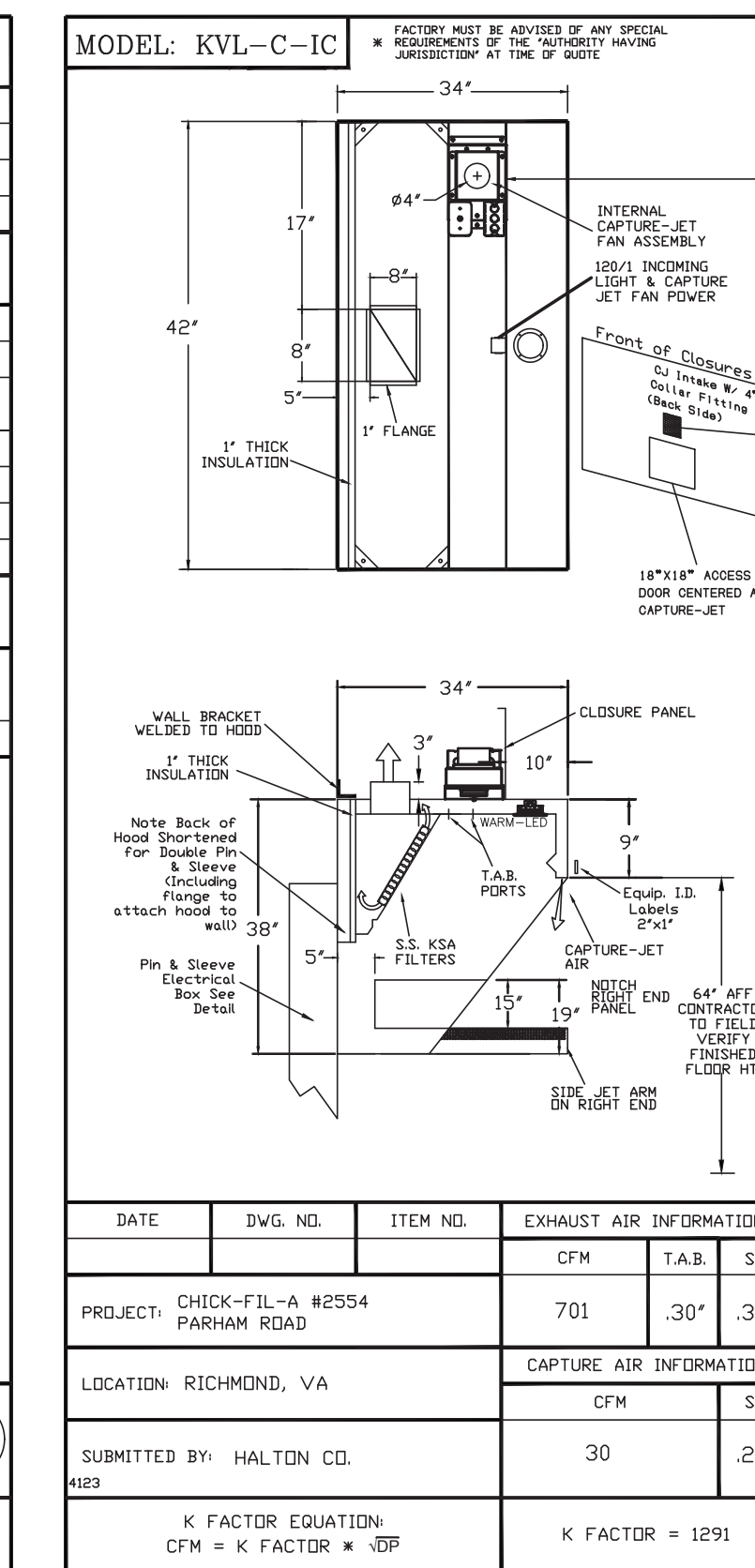
PROJECT	
CHICK-FIL-A #2554	PARHAM ROAD

LOCATION	
RICHMOND, VA	CAPTURE AIR INFORMATION
	CFM SP

SUBMITTED BY	
HALTON CD	30

K FACTOR EQUATION
CFM = K FACTOR * HP

K FACTOR = 1291



STANDARD FEATURES	
S.S. FILTERS (KSA)	2
1/2" S.S. FILTERS (KSA)	1
CAPTURE-JET	*
STAND-OFF	*
L.E.D. LIGHTS	1

OPTIONS	
REMOTE SWITCH PANEL	*
FIRE PROTECTION	*
ETL LISTED V/D EXHAUST DAMPER	*
CEILING CLOSURE	2
STD. BACKSPLASH	2
INSULATED BACKSPLASH	*
KBD DAMPER	*

MATERIAL	
EXPOSED SURFACES	18 GA. S.S.
ALL 18 GA. S.S.	*

COMMENTS	
CLOSURE HEIGHT = 780 (THREE SIDES)	
CEILING HEIGHT = ADVISE	
CEILING CLOSURE RECESSED 1" FROM FRONT TO CREATE SHELF	
30"x24" ACCESS DOOR CENTRED AT CAPTURE-JET WITH FRONT GJ INTAKE	
NOTCH LEFT END PANEL	
DOUBLE RECEPTACLE PIN & SLEEVE	
3" REAR STAND-OFF TO HAVE 1" THICK INSULATION	
EQUIPMENT COVERED	13' PRESSURE FRAMES

DATE	DWG. NO.	ITEM NO.	EXHAUST AIR INFORMATION
		H-1R	CFM T.A.B. SP
		701	30' 39'

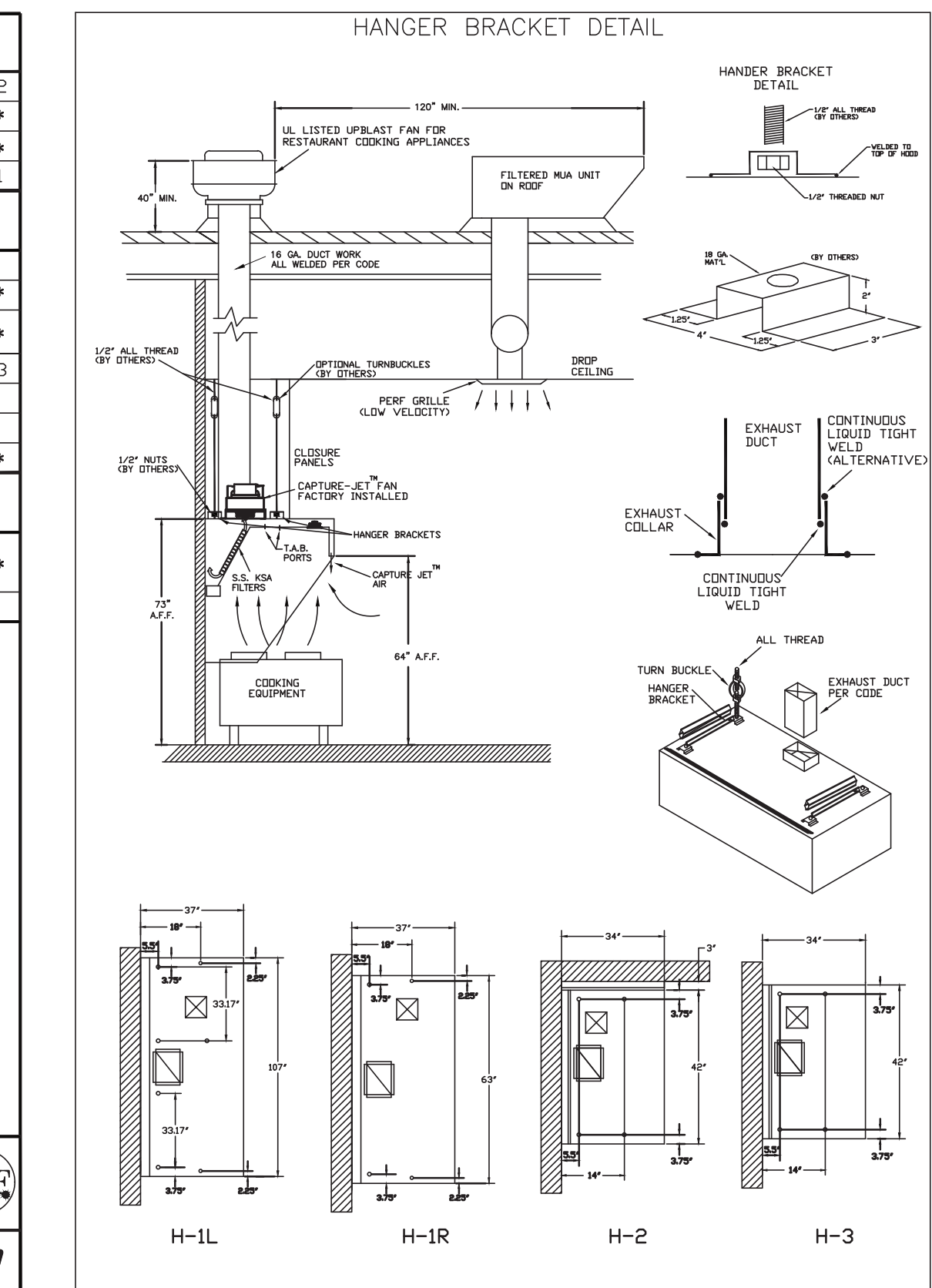
PROJECT	
CHICK-FIL-A #2554	PARHAM ROAD

LOCATION	
RICHMOND, VA	CAPTURE AIR INFORMATION
	CFM SP

SUBMITTED BY	
HALTON CD	30

K FACTOR EQUATION
CFM = K FACTOR * HP

K FACTOR = 1291



DATE	DWG. NO.	ITEM NO.	EXHAUST AIR INFORMATION
		H-1L	CFM T.A.B. SP
		1204	13' 22'

DATE	DWG. NO.	ITEM NO.	EXHAUST AIR INFORMATION
		H-1R	CFM T.A.B. SP
		709	13' 23'

DATE	DWG. NO.	ITEM NO.	EXHAUST AIR INFORMATION
		H-2	CFM T.A.B. SP
		701	30' 39'

DATE	DWG. NO.	ITEM NO.	EXHAUST AIR INFORMATION
		H-3	CFM T.A.B. SP
		701	30' 39'

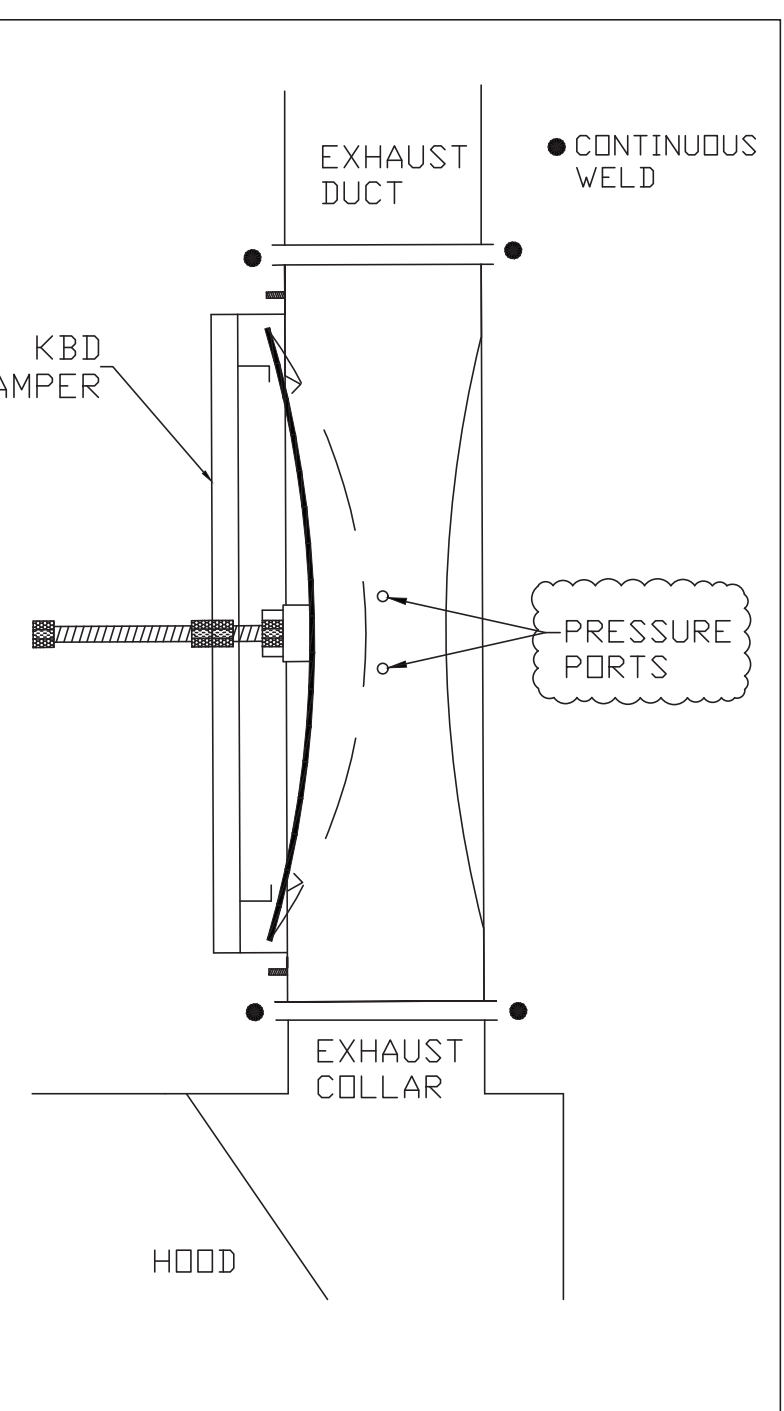
THIS DRAWING MUST BE CHECKED, SIGNED AND RETURNED TO THE APPROPRIATE FACTORY. PLEASE VERIFY THE FOLLOWING INFORMATION:

- ALL DIMENSIONAL INFORMATION, MOUNTING POSITIONS AND CLEARANCES.
- THE LOCATION AND TYPE OF COOKING EQUIPMENT.

NOTE TO APPROVER: THESE EQUIPMENT SUCH AS INCREASED ENERGY INDUCTION OR EQUIPMENT POSITION MAY AFFECT EXHAUST AIR FLOW. HALTON MUST BE NOTIFIED IF ANY OF THESE CHANGES OCCUR, A RECALCULATION EXHAUST AIR FLOW MAY BE REQUIRED.

APPROVED FOR FABRICATION: WITH NO CHANGES WITH CHANGES AS NOTED

DATE: _____



MODEL: KBD
KITCHEN BALANCING DAMPER
EXHAUST VOLUME DAMPER

CALIBRATED KBDs

EXHAUST AIR FROM HOOD

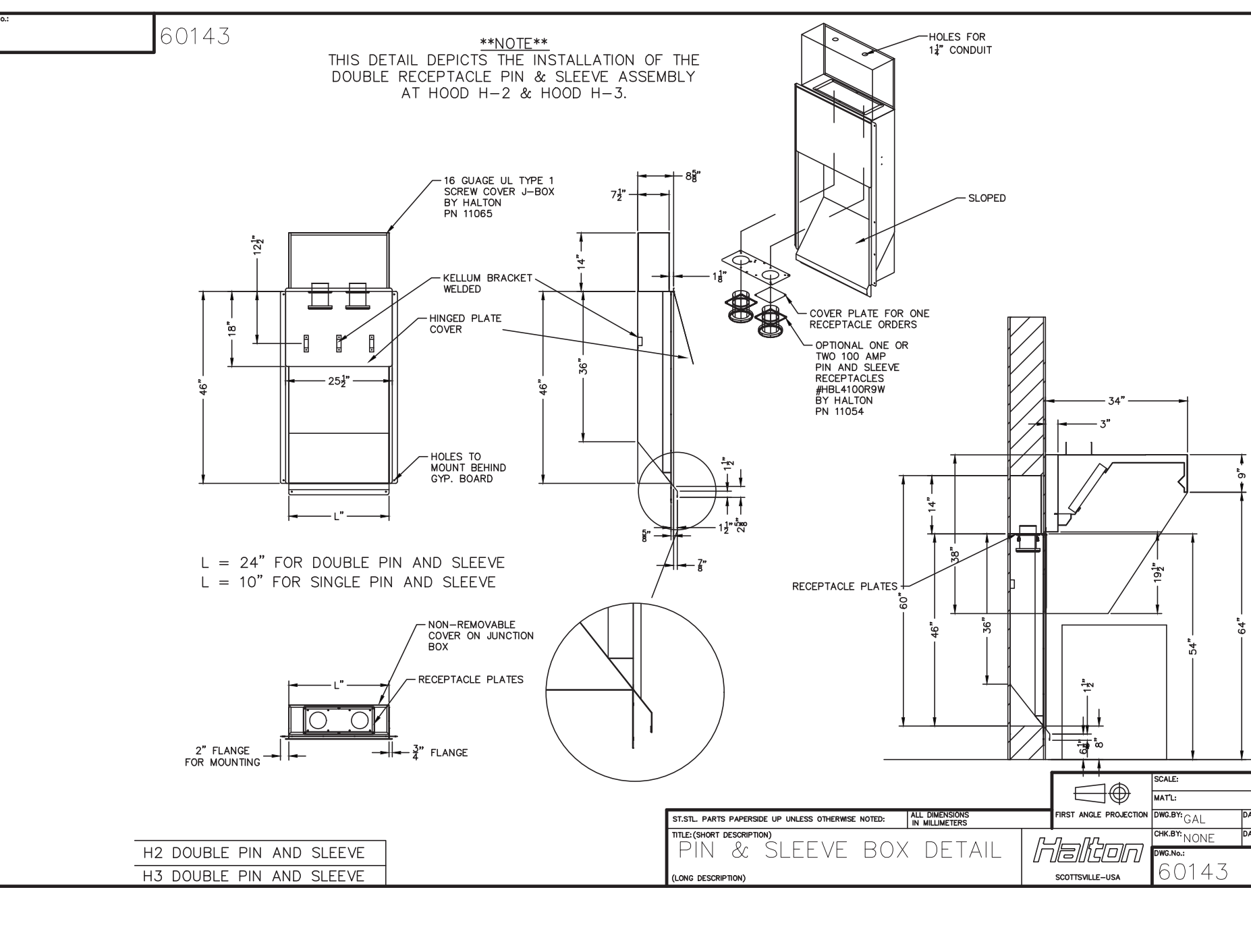
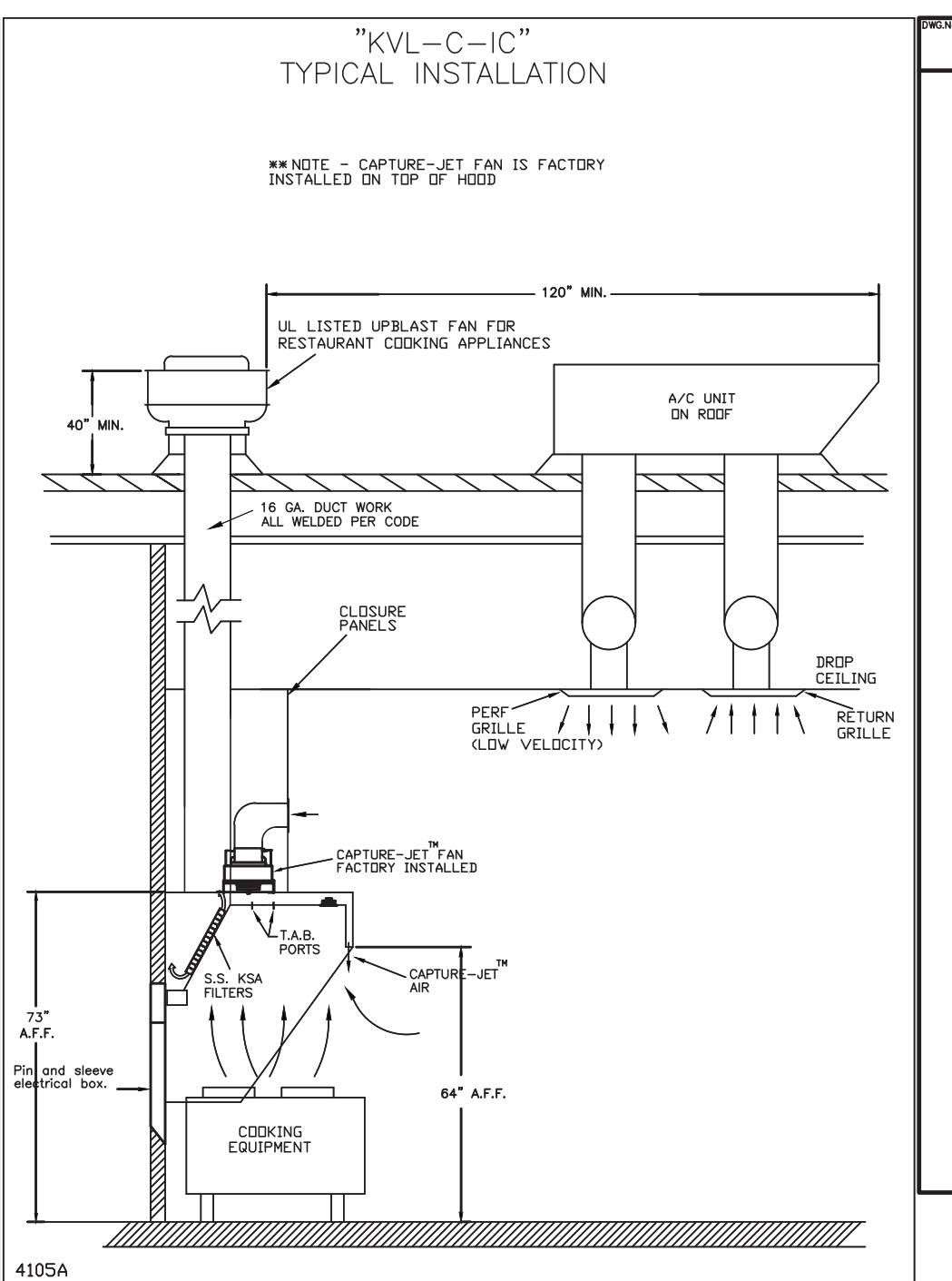
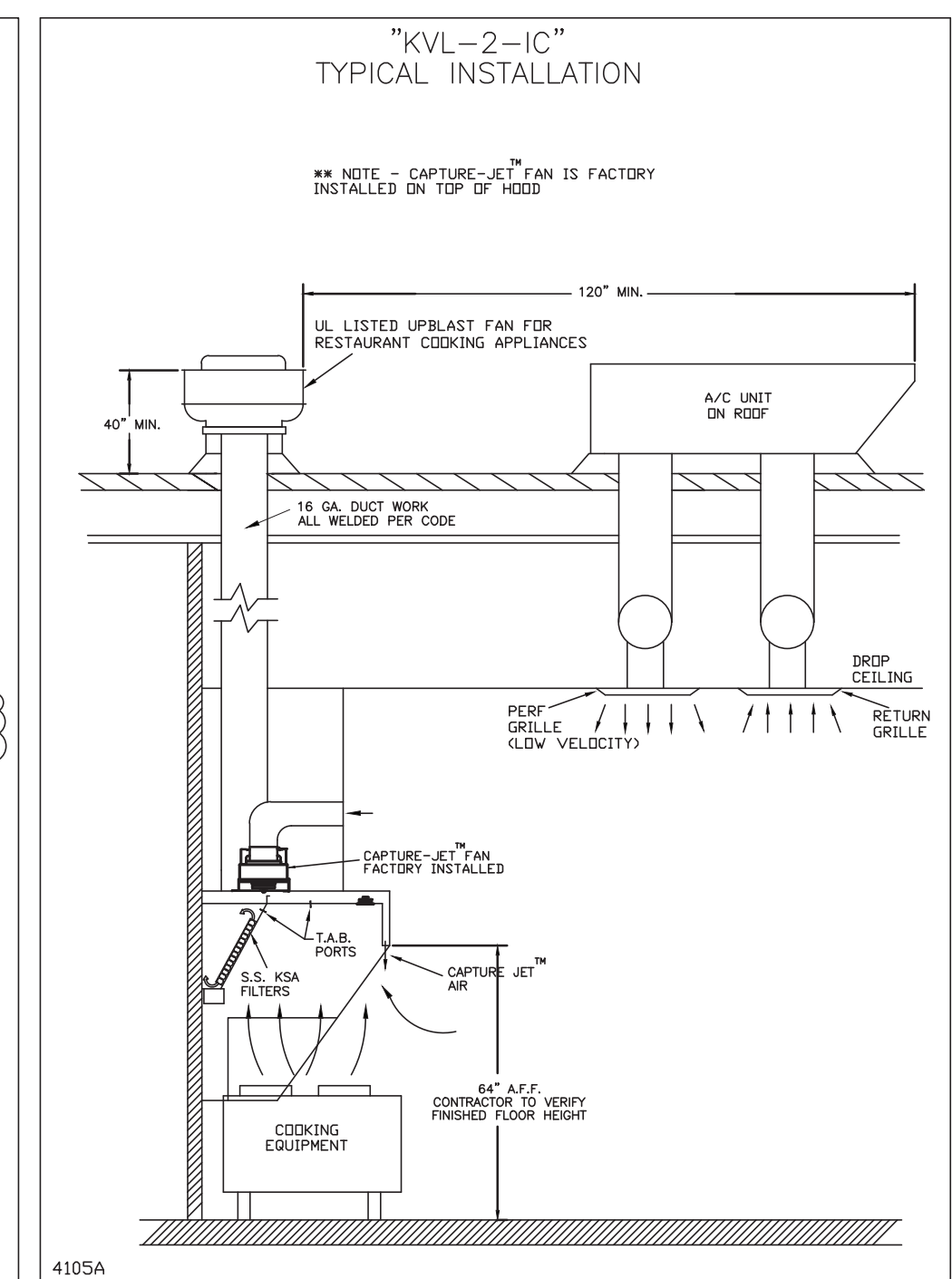
30°

EXHAUST COLLAR

HOOD

MATERIAL: FRAME - 16GA CONT. GALV. ADJUSTABLE PANEL 18GA S.S.

TAG	"L"	"W"	QUANTITY
H-1L	14"	8"	1
H-1R	8"	8"	1
H-2	8"	8"	1
H-3	8"	8"	1



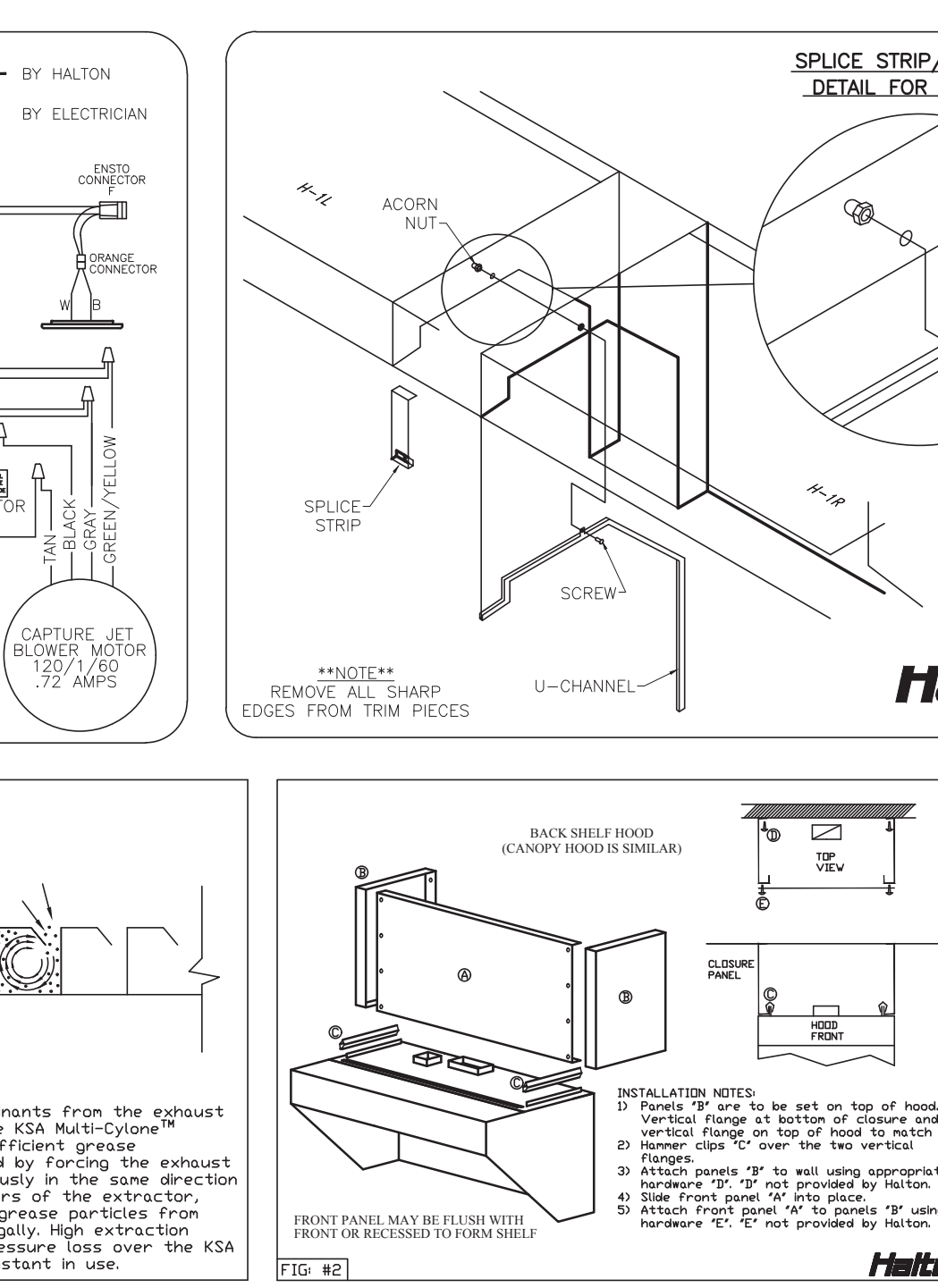
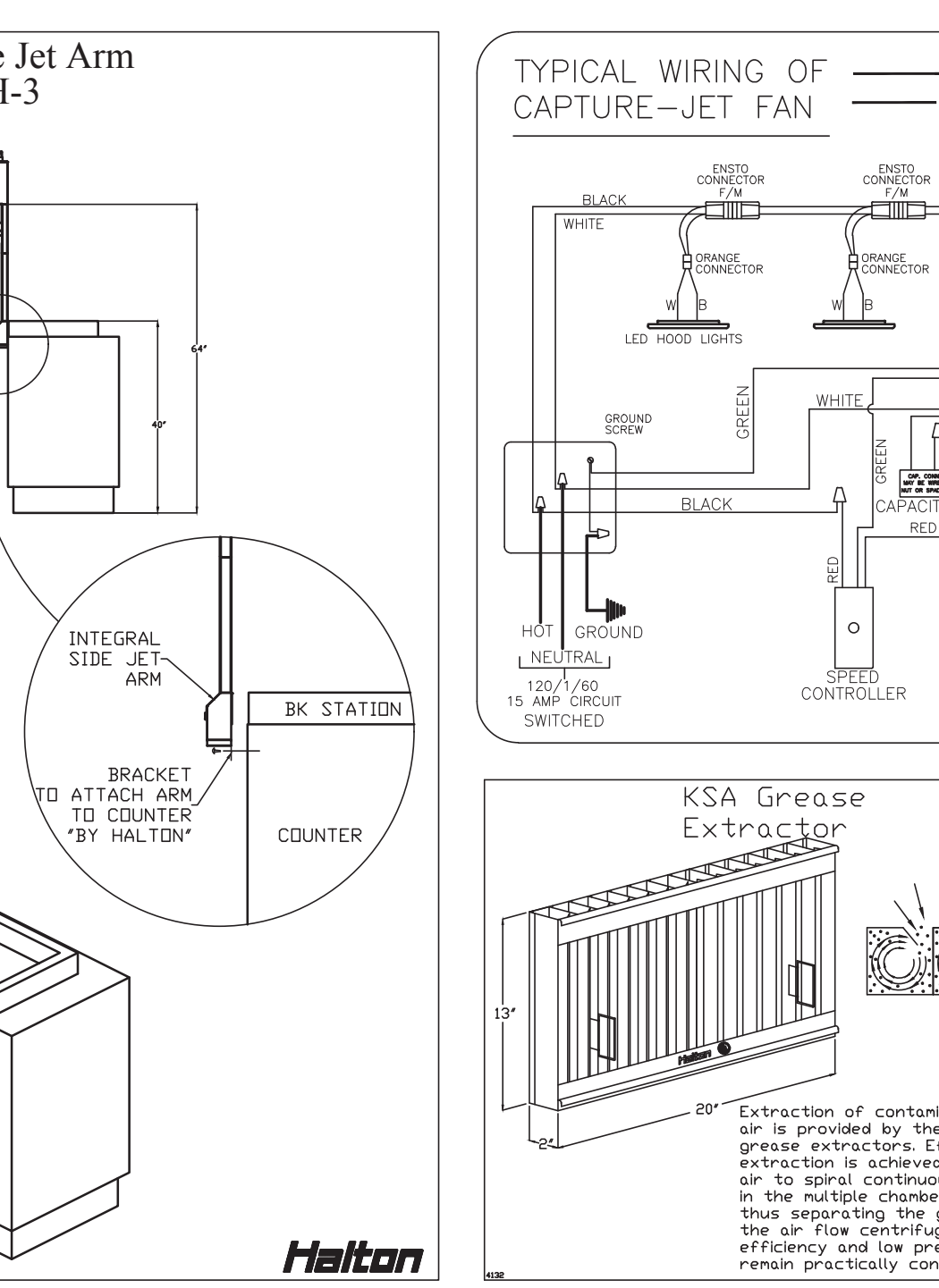
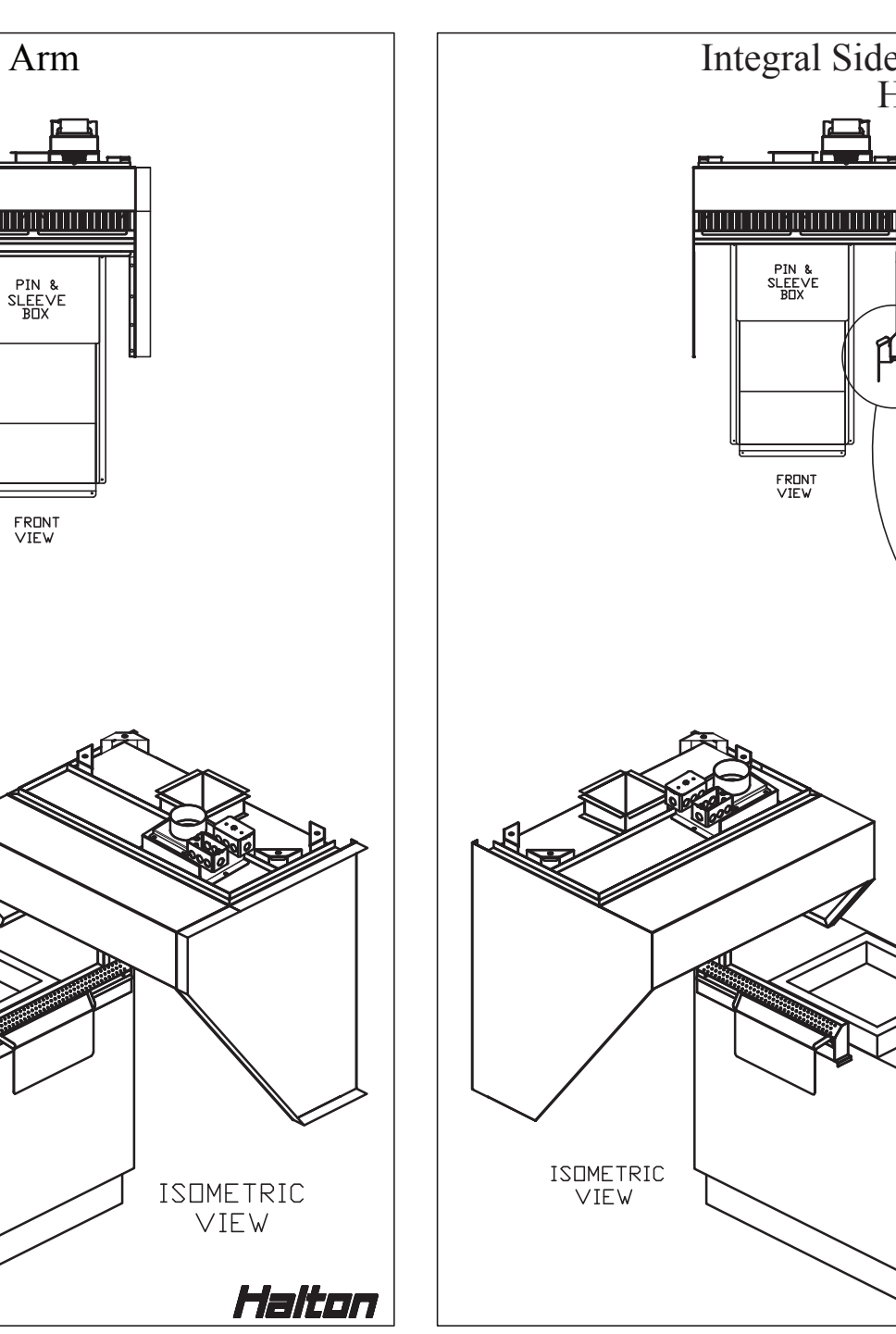
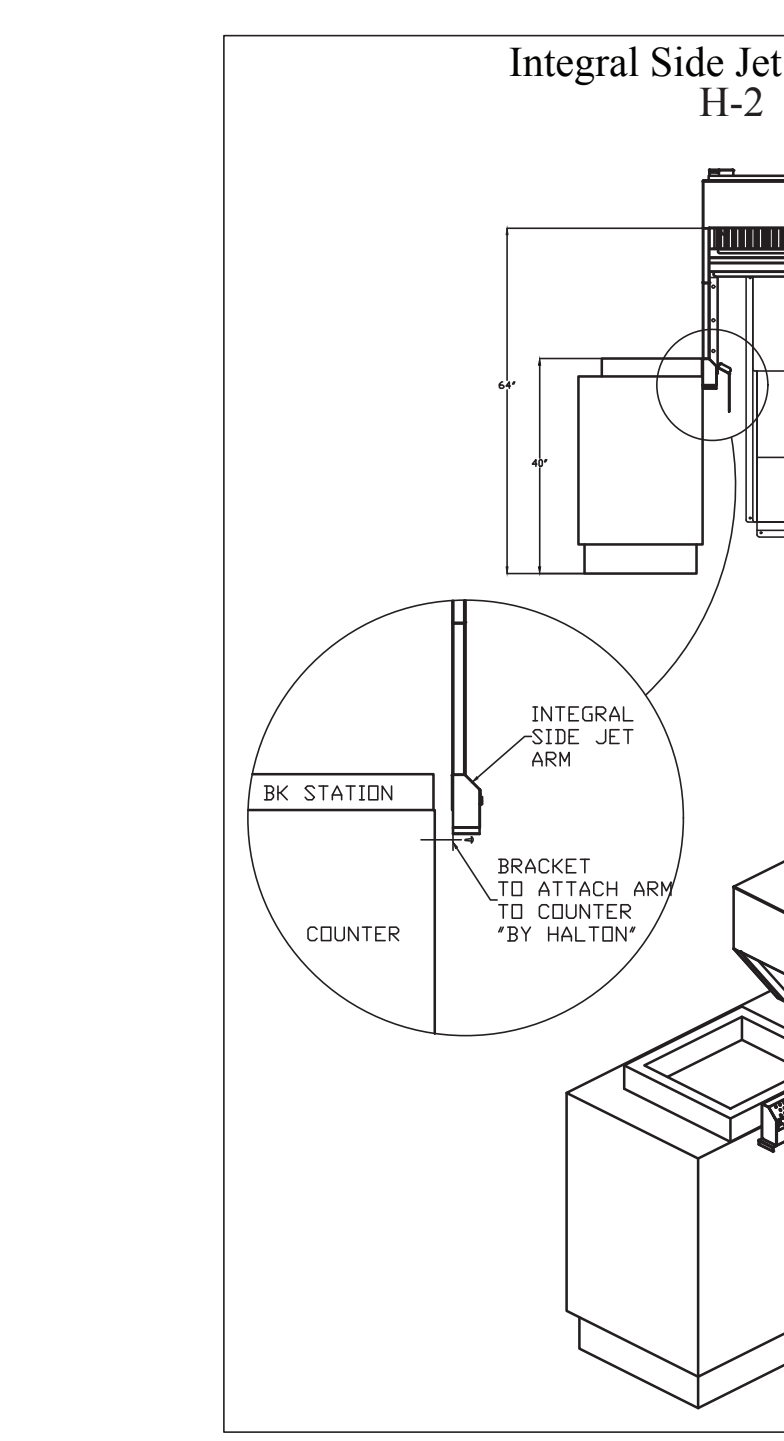
MAIL APPROVED DRAWINGS TO APPROPRIATE FACTORY BELOW:

WEBSITE: www.halton.com

HALTON CO. (USA)
101 INDUSTRIAL DRIVE
SCOTTSVILLE, KY 42164
1-270-237-5600

HALTON CO. (CANADA)
1021 BREVK PLACE
MISSISSAUGA, ON L4W 3R7
1-905-624-0301

REV.	DATE	DESCRIPTION
1		
2		
3		
4		
5		
6		
7		
8		
9		
10		



HALTON HOODS

- ETL LISTED PER LATEST 710 STANDARD
- BUILT PER NFPA 96
- NSF LISTED

CONFORMS TO UL LISTED, TYPE 1 RESTAURANT HOODS

NSF Halton INTERTEK CERTIFIED TO UL LISTED, TYPE 1 RESTAURANT HOODS

HALTON COMPANY, 101 INDUSTRIAL DR., SCOTTSVILLE, KY 42164

MODEL NO. SERIAL NO. ITEM NO.

KVL-2-IC

GENERAL REQUIREMENTS

FILTER TYPE EXHAUST HOOD FOR COMMERCIAL AND INSTITUTIONAL KITCHENS

THE FAN CIRCUIT IS RATED FOR 30V, 20A, 60HZ

THE LIGHTING CIRCUIT IS RATED FOR 30V, 20A, 60HZ

THE HOOD HAS BEEN CERTIFIED BY ETL FOR 3" INCH CLEARANCE TO COMBUSTIBLE MATERIALS (TOP, SIDES, FRONT AND REAR) IN COMPLIANCE WITH UL710 WITH CONSIDERATION TO NFPA 96

THE HOOD IS PROVIDED WITH REMOVABLE GSA FILTERS AND LIGHTING FEATURES. REPLACE FILTERS ONLY WITH UL CLASSIFIED FILTER TYPE OF THE SAME MODEL AND SUITABLE FOR USE TO HEAVY BUTY COOKING APPLIANCES.

BUTY LEVEL	MINIMUM OVERHANG	EXTENSIVE BETWEEN FRONT EDGE OF HOOD AND COOKING SURFACE	MIN. CLEARANCE HOOD LENGTH	
FRONT, IN	FRONT, IN	MIN	MAX	
MEDIUM	6	0	30	100
MEDIUM	6	0	30	130
MEDIUM	6	0	30	150
HEAVY	6	0	30	150
HEAVY	12	0	30	225

INSTALLATION NOTES:

- Must be installed on top of hood.
- Vertical flange at bottom of closure and vertical flange at top of hood in main extraction is achieved by forcing the exhaust air to travel continuously in same direction in the multiple chambers of the extractor, thus separating the grease particles from the air flow centrifugally. High extraction efficiency and low pressure loss keep the KSA remain practically constant in use.
- Remove all sharp edges from trim pieces.
- Remove all sharp edges from trim pieces.
- Remove all sharp edges from trim pieces.
- Remove all sharp edges from trim pieces.

PROJECT: CHICK-FIL-A #2554

DRAWING NO.: H-1.1

DATE: 10.04.22

SCALE: NOT TO SCALE

LOCATION: RICHMOND, VA

DRAWN BY: SKM

DATE: 10.04.22

SCALE: NOT TO SCALE

REVISION SCHEDULE

NO.	DATE	DESCRIPTION
1		
2		
3		
4		
5		
6		
7		
8		
9		
10		

CONSULTANT PROJECT # 2020.0759

DATE 08/24/22

DRAWN BY AM

CHECKED BY DAK

Information contained on this drawing and all digital files produced for above named project may not be reproduced or transmitted in any form or by any means, electronic or mechanical, including photocopying, recording, or by any information storage and retrieval system, without the prior written permission of the manufacturer.

HOOD DETAILS

SHEET NUMBER

MH1.1

MARIBR - 12/11/2023 1:47:39 PM

Chick-fil-A

Chick-fil-A
5200 Buffington Road
Atlanta, Georgia
30349-2998

INTERPLAN
INTERPLAN LLC
AR0011595
CA 8660

ARCHITECTURE
ENGINEERING
PERMITTING

220 E. CENTRAL PKWY, STE 4000
ALAMONTE SPRINGS, FL 32701
407.645.5038

FOR INFORMATION ONLY

CHICK-FIL-A

Parham Road
1529 N. Parham Road,
Richmond, VA 23229

FSR#02554

BUILDING TYPE / SIZE: SOB-E

RELEASE: 08/24/2022

PRINTED FOR CONSTRUCTION

REVISION SCHEDULE

NO.	DATE	DESCRIPTION
1		
2		
3		
4		
5		
6		
7		
8		
9		
10		

CONSULTANT PROJECT # 2020.0759

DATE 08/24/22

DRAWN BY AM

CHECKED BY DAK

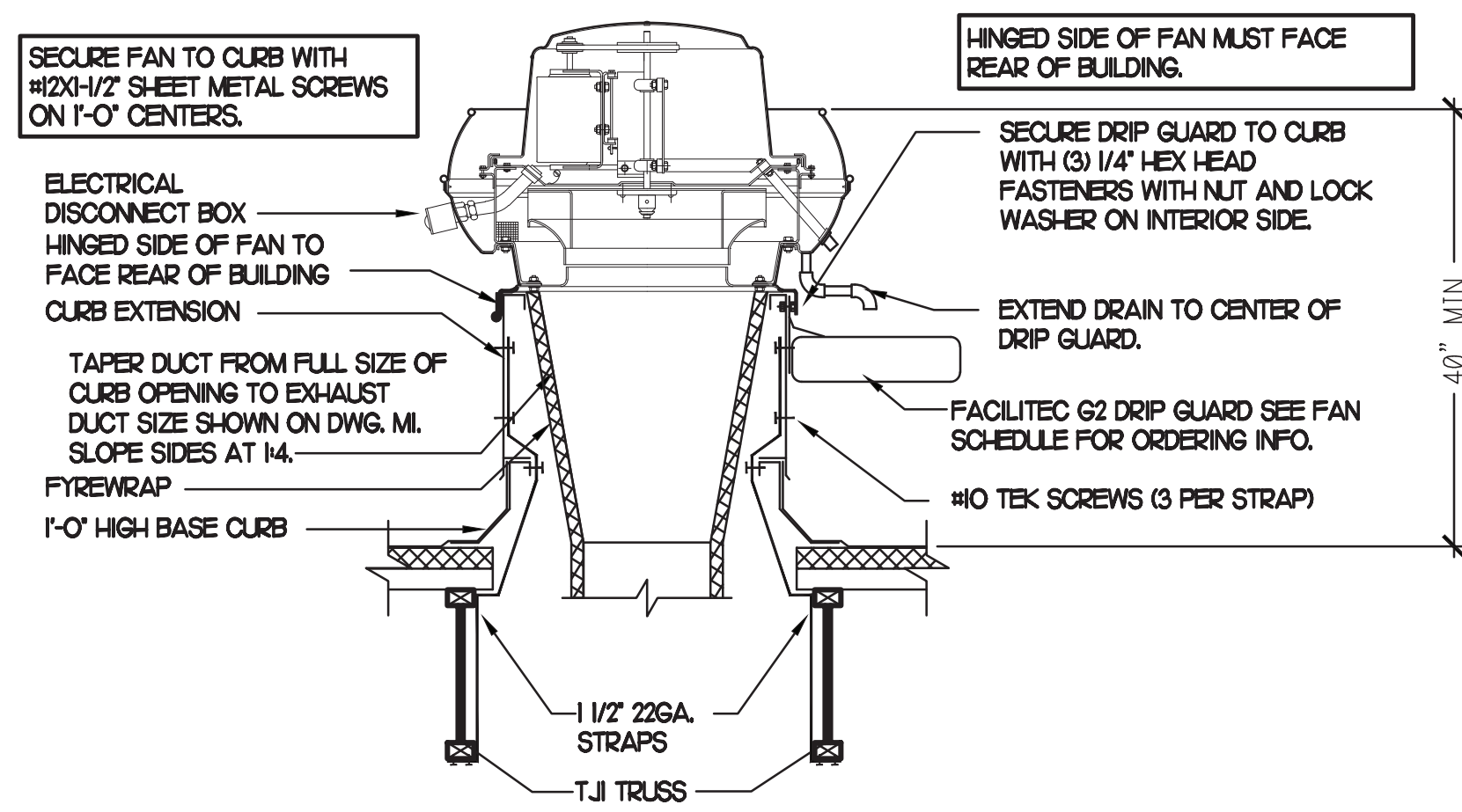
Information contained on this drawing and all digital files produced for above named project may not be reproduced or transmitted in any form or by any means, electronic or mechanical, including photocopying, recording, or by any information storage and retrieval system, without the prior written permission of the manufacturer.

HOOD DETAILS

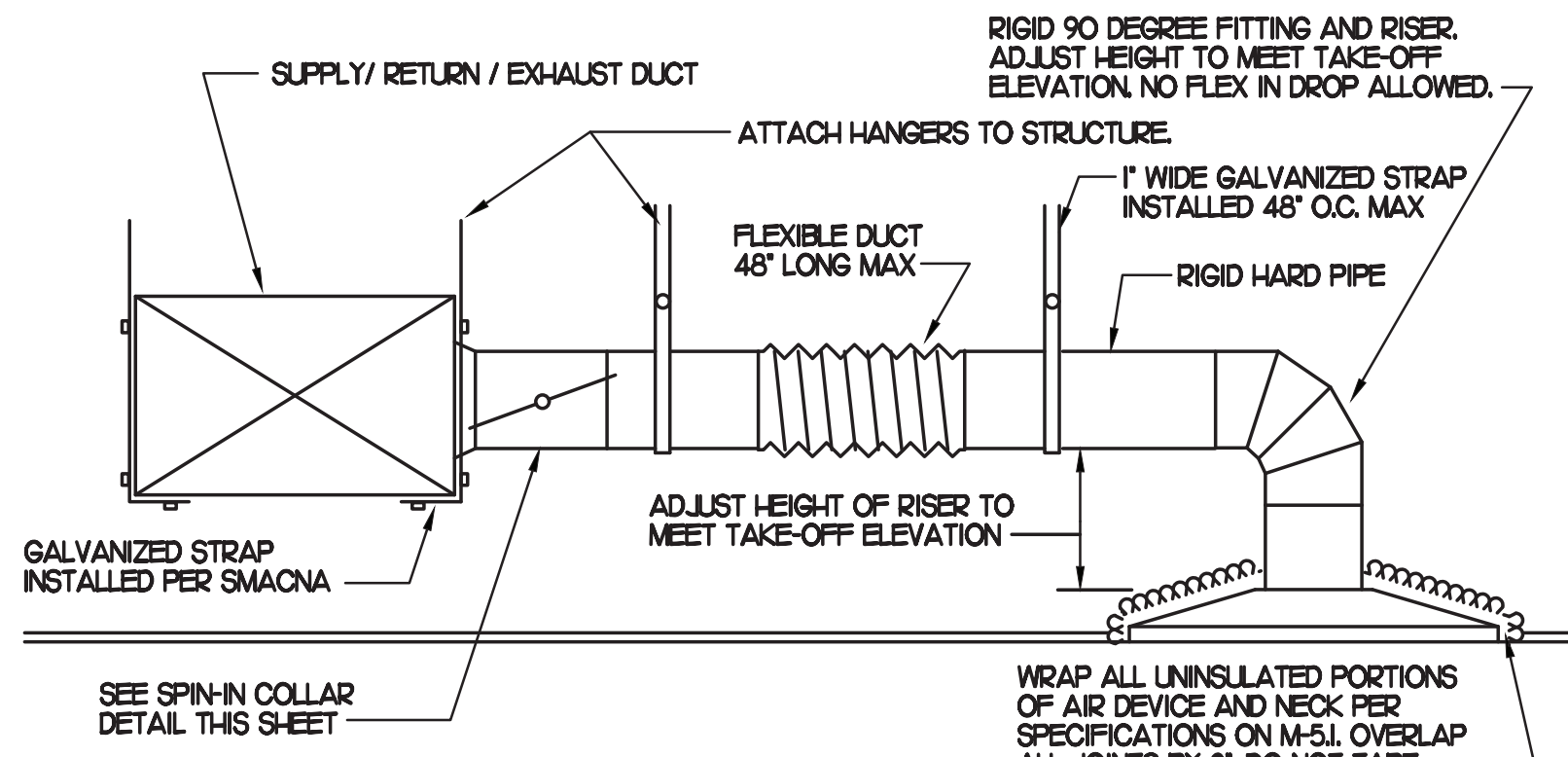
SHEET NUMBER

MH1.1

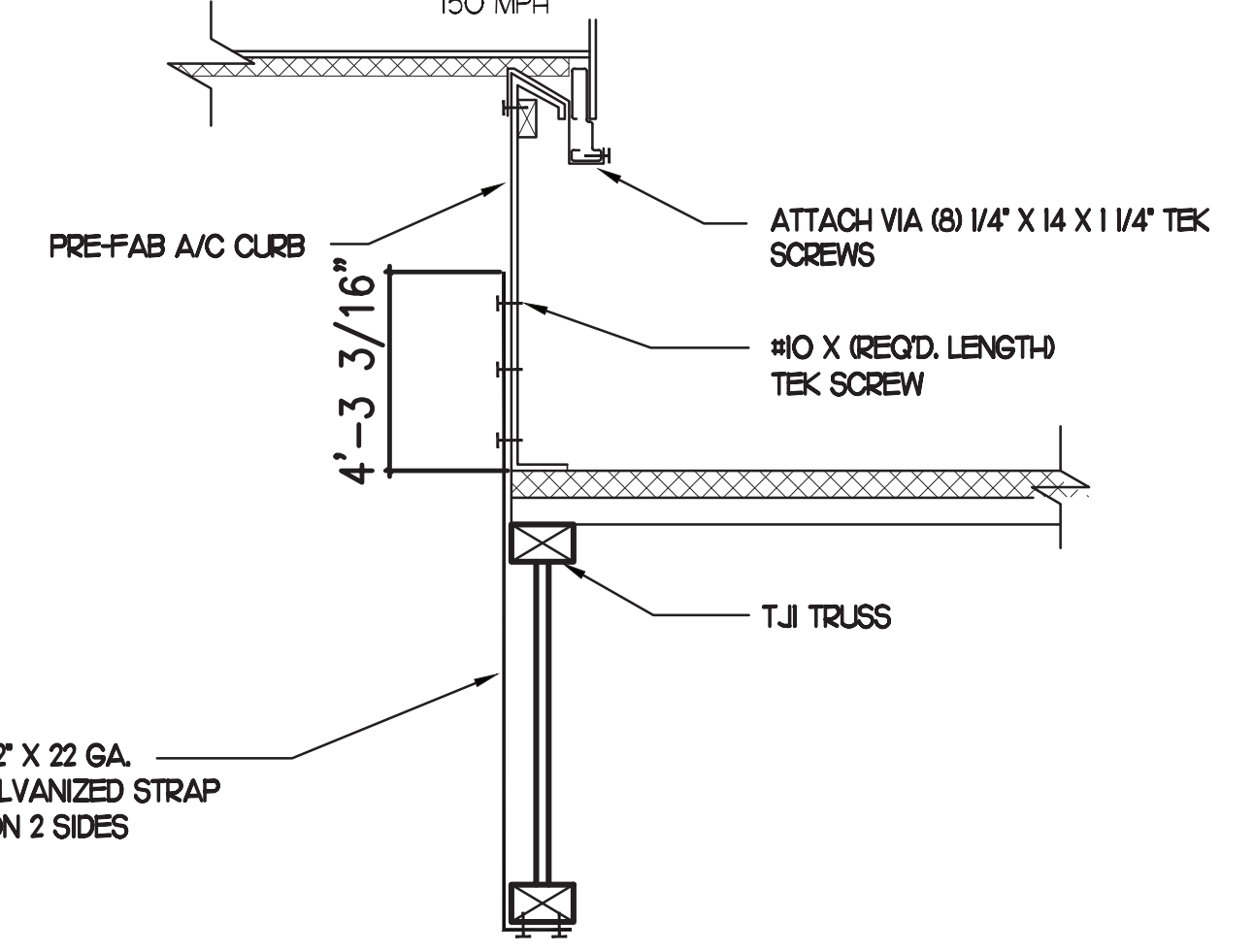
MARIBR - 12/11/2023 1:47:39 PM



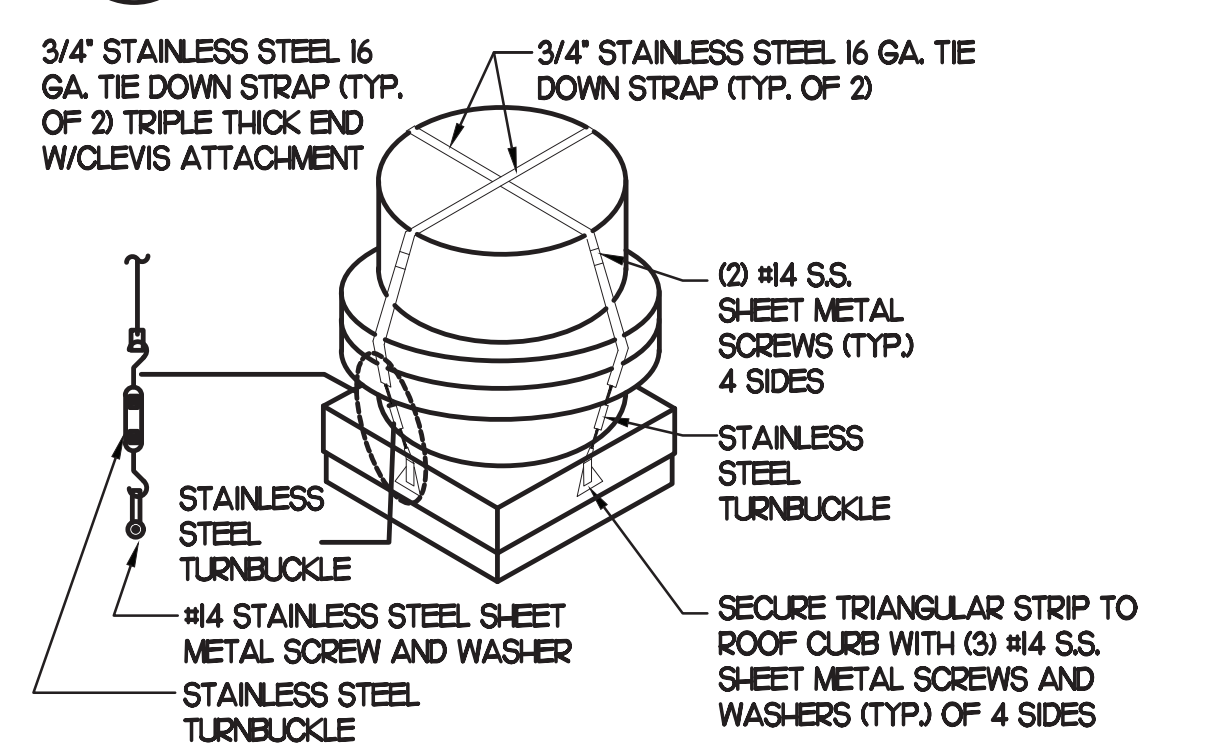
1 KITCHEN HOOD EXHAUST FAN
NO SCALE



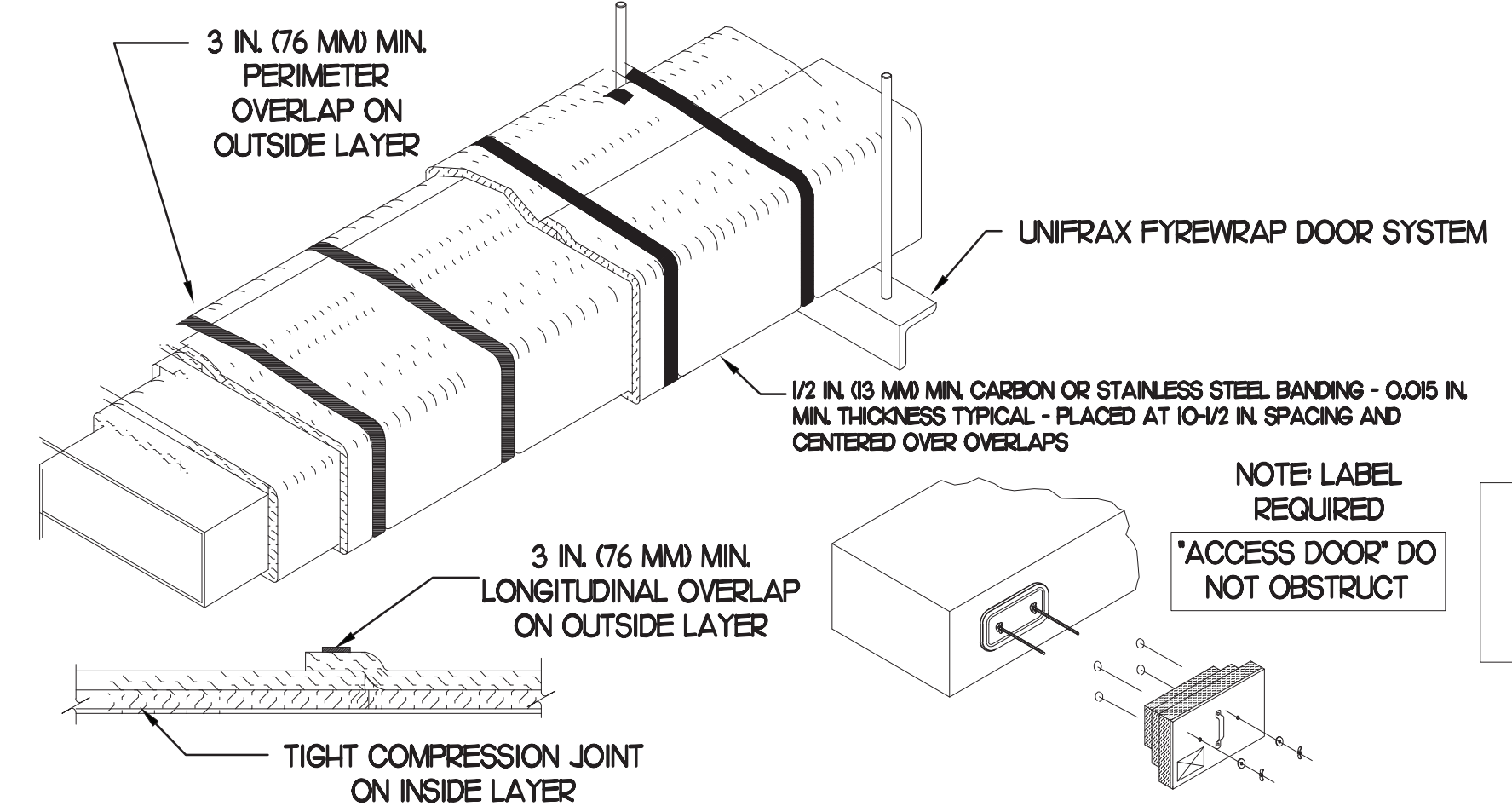
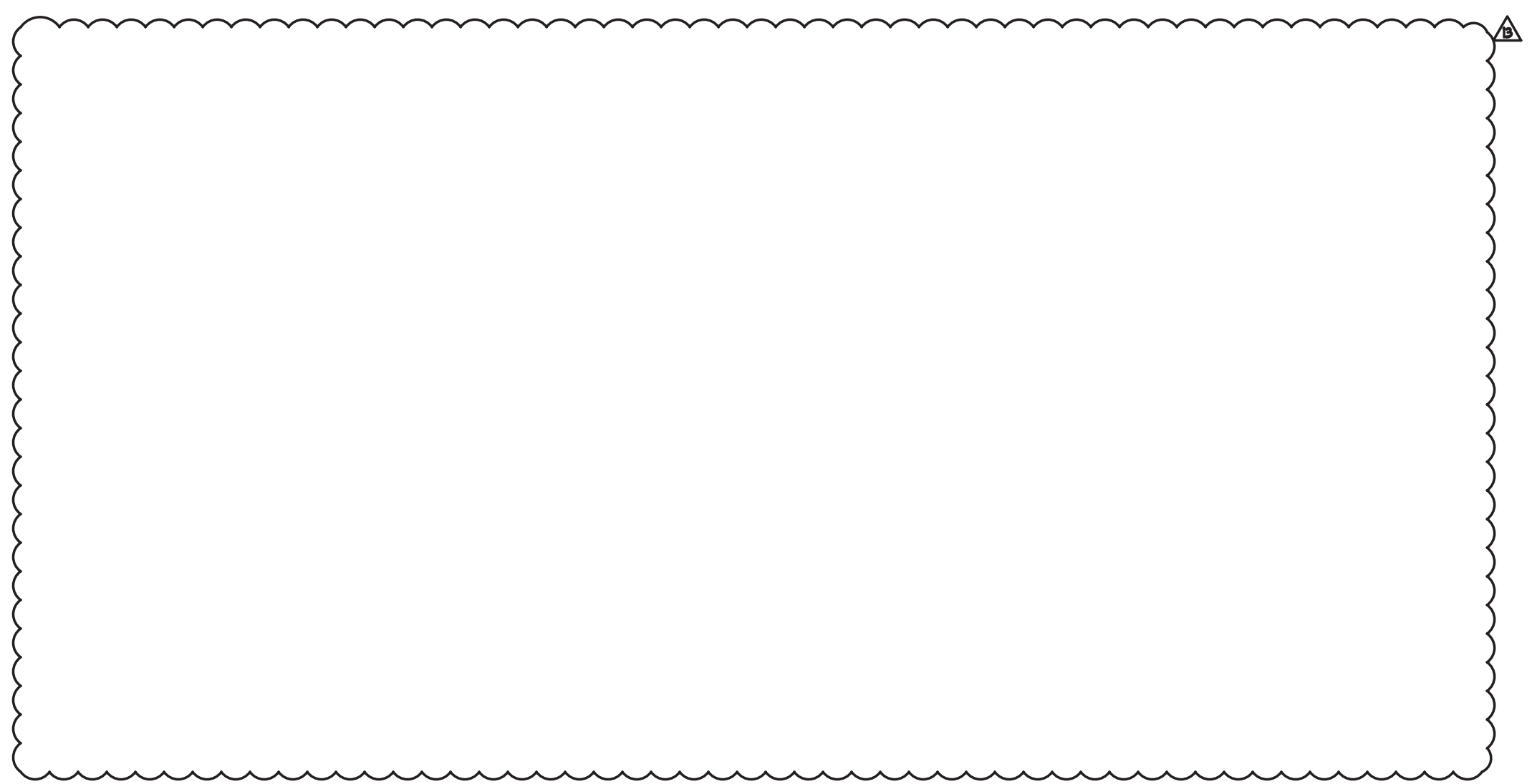
2 SAG/RAG/GRILLE TAKE-OFF
NO SCALE



3 RTU TIE-DOWNS DETAIL
NO SCALE

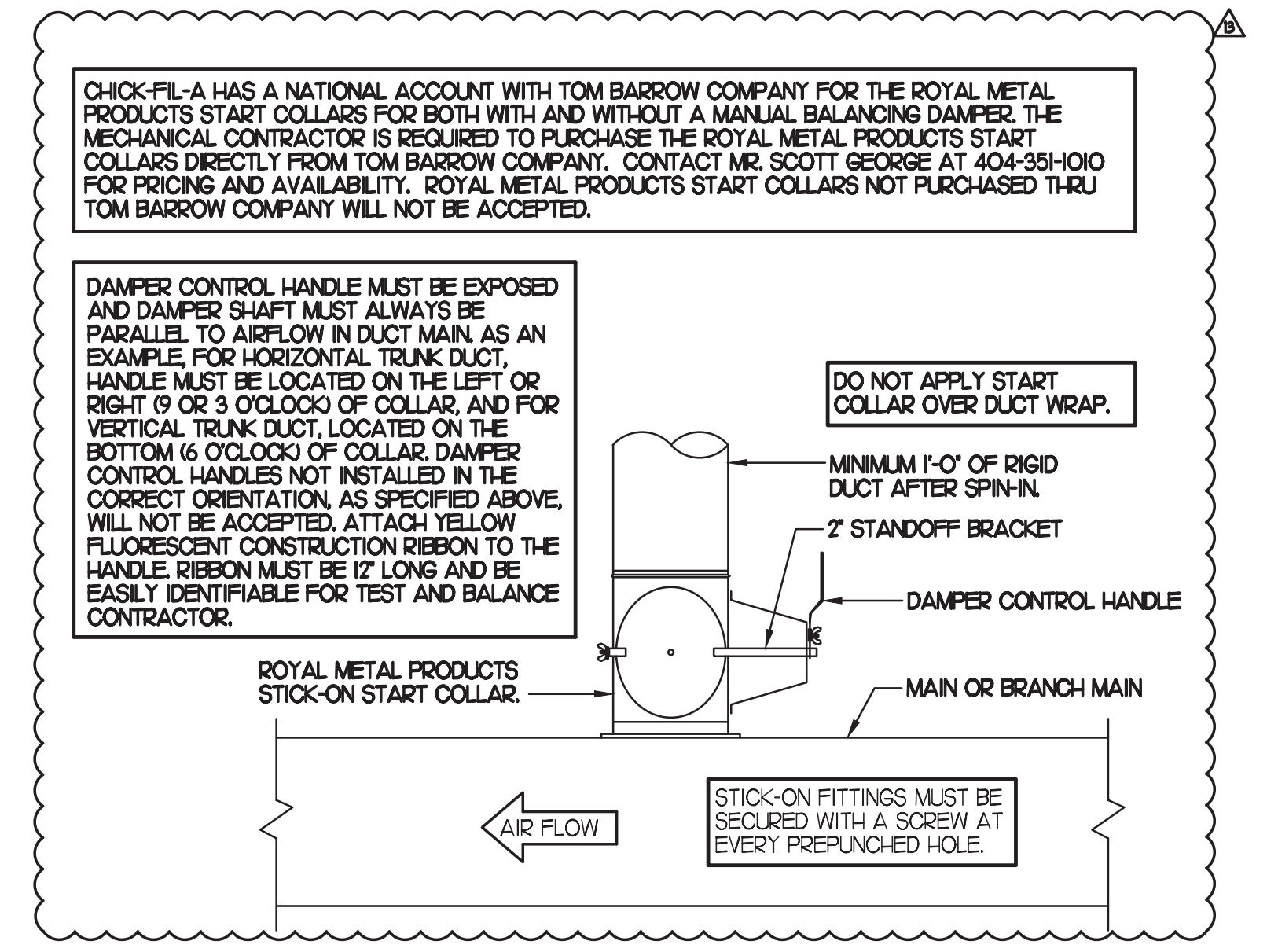


4 FAN SECURING DETAIL
NO SCALE

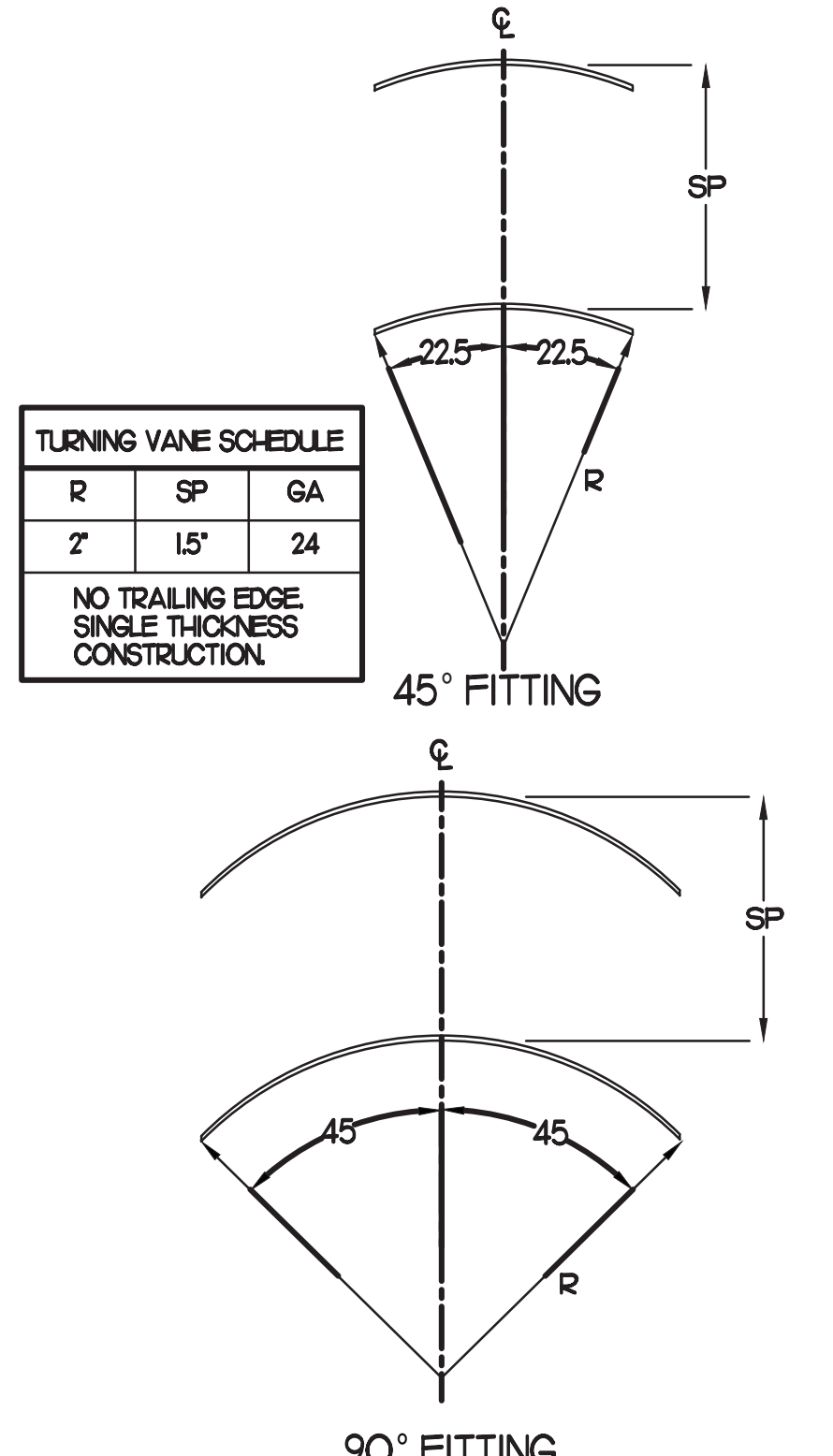


- UNIFRAX FIREWRAP ELITE 1.5 DUCT INSULATION HAS BEEN TESTED IN ACCORDANCE WITH ASTM E 2336 TO PROVIDE ZERO CLEARANCE TO COMBUSTIBLES AND MEETS THE REQUIREMENTS FOR ONE OR TWO HOUR ENCLOSURES. THROUGH PENETRATIONS FIRESTOP SYSTEMS ARE TESTED IN ACCORDANCE WITH EITHER ASTM E 814 OR UL 1479. ICC-ES APPROVAL PER REPORT ESR 2213 OR ESR 2832. UNDERWRITER'S LABORATORIES (UL) LISTINGS SHOW COMPLIANCE TO UL 1479 FOR THROUGH PENETRATION FIRESTOP SYSTEMS.
- COMPLIANT TO THE FOLLOWING CODES:
 BUILDING CODE: INTERNATIONAL BUILDING CODE EDITION 2018
 ELECTRICAL CODE: NATIONAL ELECTRICAL CODE EDITION 2017
 ENERGY CODE: INTERNATIONAL ENERGY CONSERVATION CODE
 PLUMBING CODE: INTERNATIONAL PLUMBING CODE EDITION 2018
 MECHANICAL CODE: INTERNATIONAL MECHANICAL CODE EDITION 2018
 FUEL GAS CODE: INTERNATIONAL FUEL GAS CODE EDITION 2018
 FIRE CODE: INTERNATIONAL FIRE CODE EDITION 2012
 ACCESSIBILITY CODE: ANSII A117.1 EDITION 2009
- INSULATION APPLIED IN TWO LAYERS WITH TIGHT COMPRESSION JOINT ON INSIDE LAYER AND 3 INCH MINIMUM OVERLAPS ON BOTH PERIMETER AND LONGITUDINAL OVERLAPS ON OUTSIDE LAYER.
- GREASE EXHAUST DUCT RUNS FROM THE HOOD EXHAUST CONNECTION UP TO THE EXHAUST FAN ON THE ROOF WITH MINIMAL TURNS OR BENDS AND MAINTAINING MINIMUM 1/4 UNIT VERTICAL RISE PER 12 UNITS HORIZONTAL RUN. NFPA 96 COMPLIANT ACCESS DOORS LOCATED AS REQUIRED BY CODE.
- UNIFRAX FIREWRAP ELITE 1.5 ACCESS DOORS AS SPECIFIED IN ICC-ES BUILDING CODE REPORTS ESR 2213 OR ESR 2832.
- ROOF MOUNTED EXHAUST FAN IS MOUNTED ON A HINGED BASE WHICH ALLOWS ACCESS TO THE DUCT FROM THE ROOF.
- SUPPORT HANGER SYSTEMS DO NOT NEED TO BE WRAPPED PROVIDED THE HANGER RODS ARE AT LEAST A MINIMUM OF 3/8 IN. DIAMETER. USE MINIMUM 2 X 2 X 1/8 IN. STEEL ANGLE OR SMACNA EQUIVALENT SUPPORT SYSTEM.
- UNIFRAX FIREWRAP ELITE 1.5 DUCT ENCLOSURE SYSTEM SHALL BE INSTALLED IN ACCORDANCE WITH MANUFACTURER'S INSTRUCTIONS.
- UNIFRAX FIREWRAP ELITE 1.5 DUCT WRAP SHALL BE INSTALLED ON THE DUCT FROM THE HOOD CONNECTION TO THE CONNECTION TO THE FAN.

6 GREASE EXHAUST DUCT PROTECTION TO COMBUSTIBLES DETAIL
NO SCALE



7 START COLLAR
NO SCALE



8 TURNING VANES
NO SCALE



Chick-fil-A
 Chick-fil-A
 5200 Buffington Road
 Atlanta, Georgia
 30349-2998

INTERPLAN
 INTERPLAN LLC
 AR0011595
 CA 8660

ARCHITECTURE
 ENGINEERING
 PERMITTING

220 E. CENTRAL PKWY, STE 4000
 ALTAMONTE SPRINGS, FL 32701
 407.645.5038



CHICK-FIL-A
 Parham Road
 1529 N. Parham Road,
 Richmond, VA 23229

FSR#02554
 BUILDING TYPE / SIZE: S08-E
 RELEASE: 08/24/2022

PRINTED FOR CONSTRUCTION

REVISION SCHEDULE

NO.	DATE	DESCRIPTION
02	08/11/2022	REV COMMENTS
03	08/31/2022	ARCH CIVIL COORDINATION

CONSULTANT PROJECT # 2020.0750
 DATE 08/24/22
 DRAWN BY AM
 CHECKED BY DAK
 Information contained on this drawing and all digital files produced for above named project may not be reproduced in any manner without express written or verbal consent from authorized project representatives.

SHEET MECHANICAL DETAILS

SHEET NUMBER
M4.1

