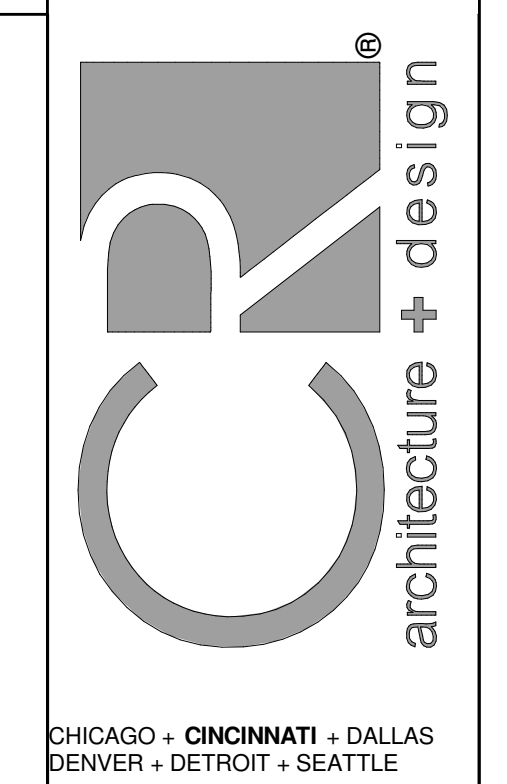


KEYED NOTES

- M2 TEMPERATURE SENSOR FOR RTU FURNISHED BY ORIGINAL EQUIPMENT MANUFACTURER. ROUTE CONTROL WIRING THROUGH RTU AND BACK TO BUILDING CONTROL PANEL. MOUNT SENSOR 5'-0" AFF ON WALL. COORDINATE LOCATION WITH KROGER EQUIPMENT AND FURNISHINGS. PROVIDE LOCKABLE PROTECTIVE COVER OVER DEVICE.
- M5 DUCT UP TO OPENING THROUGH ROOF-CAPPED WITH CURB AND KROGER FURNISHED EXHAUST FAN.
- M10 GREASE DUCT FROM EXHAUST HOOD TO OPENING THROUGH ROOF PER NFPA 96. MECHANICAL CONTRACTOR TO INSTALL PROVIDED HINGE KIT. DUCTWRAP IS TO RUN THE ENTIRE LENGTH OF GREASE DUCT FROM CEILING PENETRATION TO FAN. REFER TO HSD-4A AND HSD-4B ON M5.1, AND BOTH 233813.00-04 AND 233813.00-02 ON M5.2 FOR ADDITIONAL INFORMATION.
- M11 INSTALL TRANSFER GRILLES IN ACCORDANCE WITH 233713.00-19 ON M5.2.
- M12 CONNECT TO EXISTING DUCT. CONTRACTOR TO VERIFY EXISTING SIZE AND LOCATION IN FIELD PRIOR TO NEW WORK. REBALANCE EXISTING SYSTEM AS NECESSARY TO ACHIEVE SPECIFIED AIRFLOWS.
- M18 DIFFUSER AROUND HOOD TO BE A 2-WAY DIFFUSER FACING AWAY FROM THE HOOD TO PREVENT INTERFERENCE WITH THE HOODS CONTAIN AND CAPTURE.
- M24 HOOD ANSUL PULL STATION LOCATION. COORDINATE FINAL LOCATION WITH ELECTRICAL PLANS. PROVIDE NAMEPLATE AT STATION WITH HOOD NUMBER AND LOCATIONS. REFERENCE HSD-4A FOR ADDITIONAL INFORMATION.
- M32 ROOFTOP UNIT FURNISHED BY KROGER AND INSTALLED BY MECHANICAL CONTRACTOR. BALANCE TO SCHEDULED AIRFLOW. REFER TO ARCHITECTURAL ROOF PLAN FOR HVAC ROOFTOP DIMENSIONAL INFORMATION. REFER TO STRUCTURAL DRAWINGS FOR JOIST AND BEAM LOCATIONS AND DIMENSIONAL INFORMATION.
- M33 DUCT MOUNTED SMOKE DETECTOR TO BE INSTALLED IN THE RETURN DUCTWORK, DOWNSTREAM OF FILTERS AND UPSTREAM OF ANY BRANCH CONNECTIONS. INSTALL SAMPLING TUBES(S) AND DETECTOR HOUSING IN STRICT ACCORDANCE WITH MANUFACTURER'S INSTALLATION INSTRUCTIONS. DETECTOR, FAN SHUTDOWN WIRING, AND CONTROLS BY OTHERS.
- M37 INSTALL TOP OF RETURN GRILLE 15'-0" AFF IN SOFFIT. COORDINATE FINAL LOCATION WITH ARCHITECT AND WITH DECOR. LOCATION OF DECOR TAKES PRECEDENCE OVER LOCATION OF RETURN GRILLE.
- M94 PROVIDE NEW EXHAUST FAN ON EXISTING CURB, MODIFYING EXISTING CURB AS NECESSARY. RECONNECT TO EXISTING DUCTWORK.



CHICAGO • CINCINNATI • DALLAS
DENVER • DETROIT • SEATTLE

800.469.4949
www.c-a-architects.com

CONSULTANTS

MECHANICAL/ELECTRICAL ENGINEERS
WWW.ALHEMERS.COM
LEWINGTON, KENTUCKY
COLUMBUS, OHIO
NEW YORK, NEW YORK

SEKLH ENGINEERS
KOHRS LOENMANN HELL ENGINEERS, INC.
1559 ALEXANDRIA PIKE, SUITE 11
BIRMINGHAM, ALABAMA 35242-0000
859-442-8058 FAX



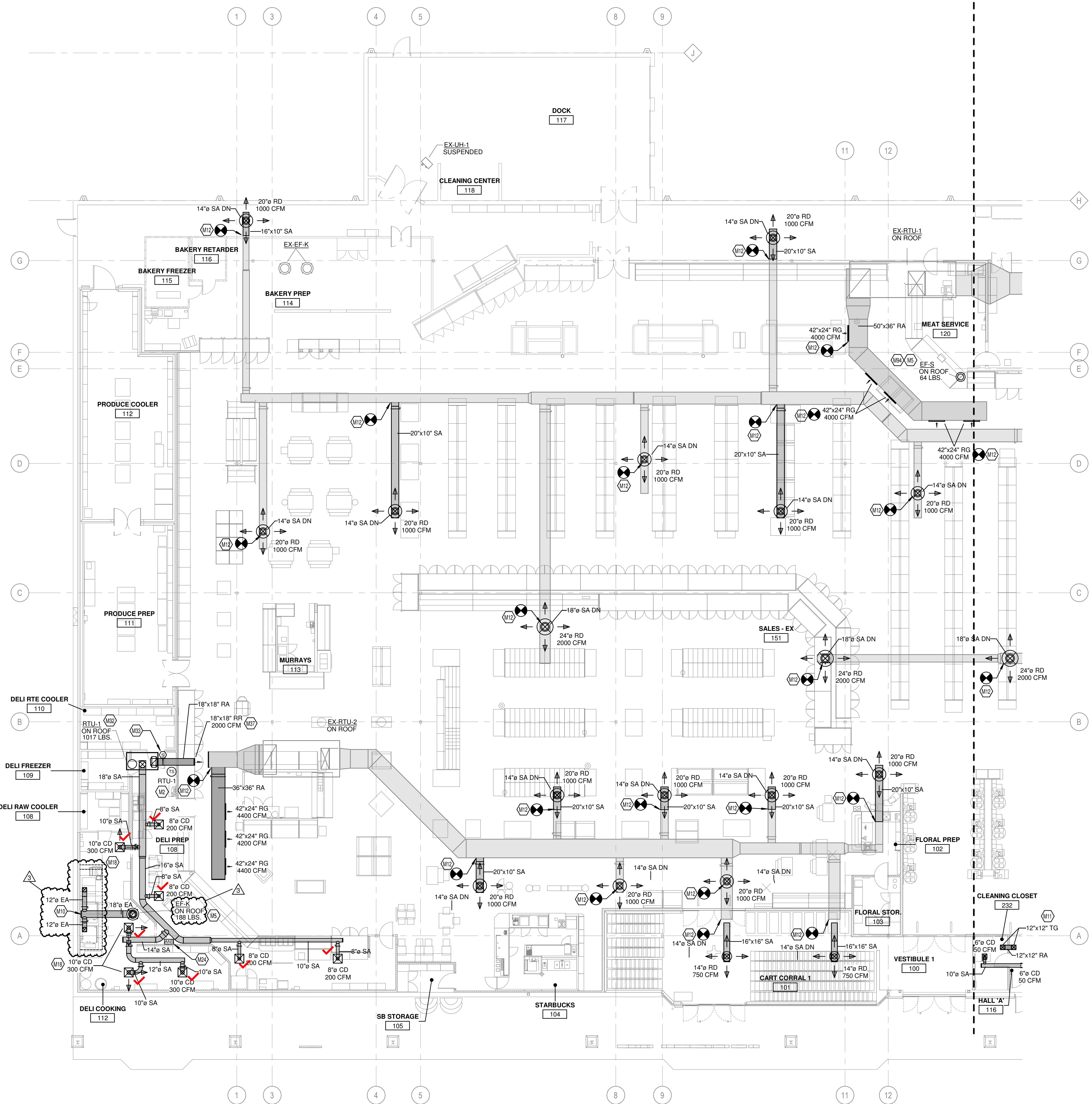
FACILITY ENGINEERING
11210 DORNHILL PARK DR. CINCINNATI, OH 45242
KSA 1202007070707

ISSUE	DATE	DESCRIPTION
	12/14/2022	90% KROGER REVIEW
	01/27/2023	BIDPERMIT ISSUE

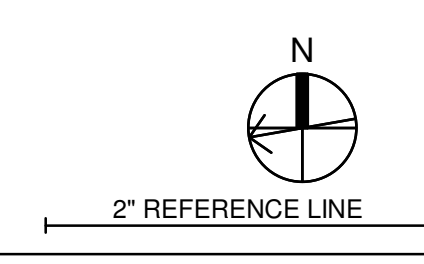
REVISION	DATE	DESCRIPTION
3	10/25/2023	BULLETIN NO. 3

EXECUTED BY: TDS
REVIEWED BY: KSL
PROJECT TITLE
**KROGER STORE
A921**
1099 S.R. 28 BY-PASS
MILFORD, OH 45150
COMMISSION NO. 522342
ISSUE DATE 01/27/2023
SHEET TITLE
**HVAC FLOOR PLAN
- LEFT**

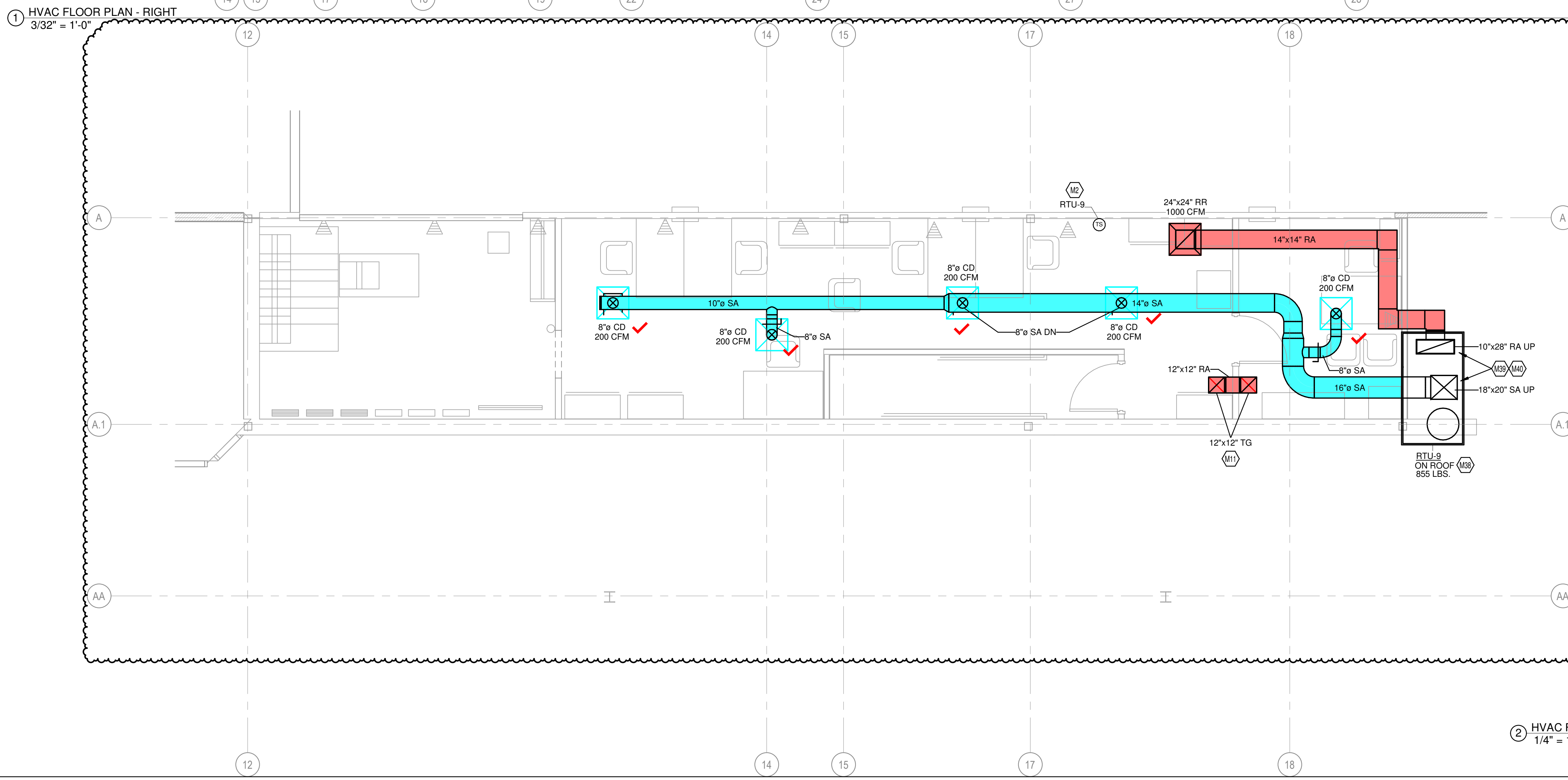
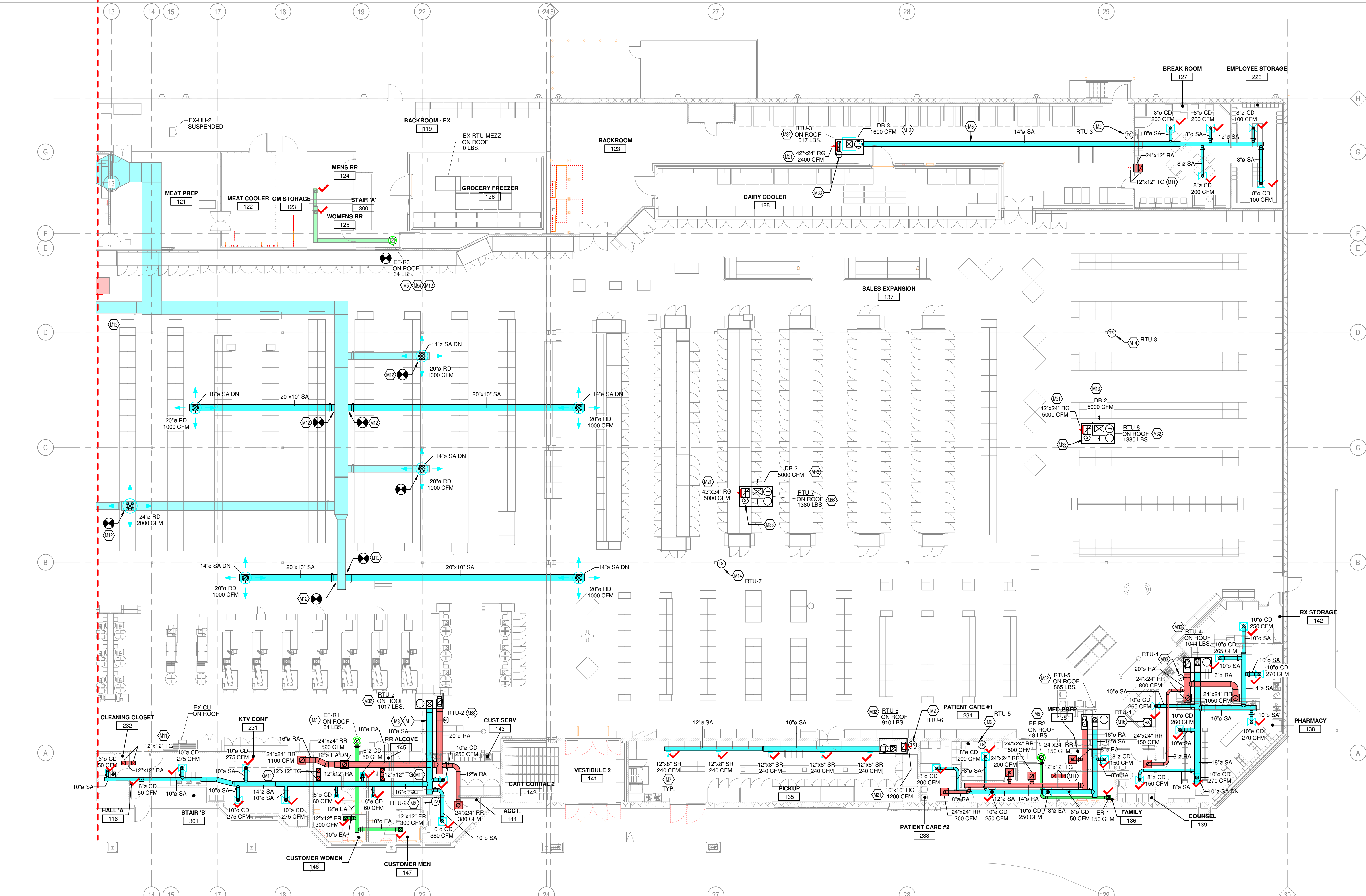
SHEET NO.
M1.1a
© 2022 Cole+Russell Architects, Inc.



1 HVAC FLOOR PLAN - LEFT
3/32" = 1'-0"

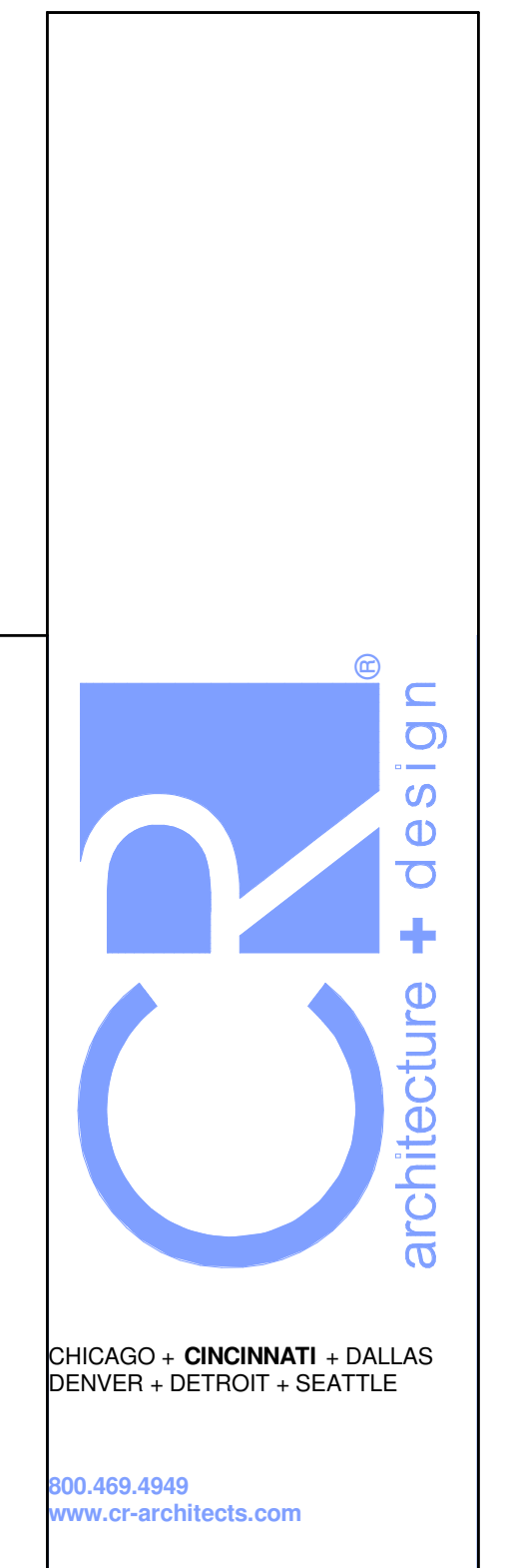


THIS DOCUMENT IS THE PROPERTY OF COLE+RUSSELL ARCHITECTS, INC. NEITHER THE DOCUMENT NOR THE INFORMATION CONTAINED HEREIN MAY BE COPIED OR USED FOR OTHER THAN THE SPECIFIC PROJECT FOR WHICH IT WAS PREPARED WITHOUT THE EXPRESS WRITTEN CONSENT OF COLE+RUSSELL ARCHITECTS, INC.
10/25/2023 2:11:57 PM



KEYED NOTES

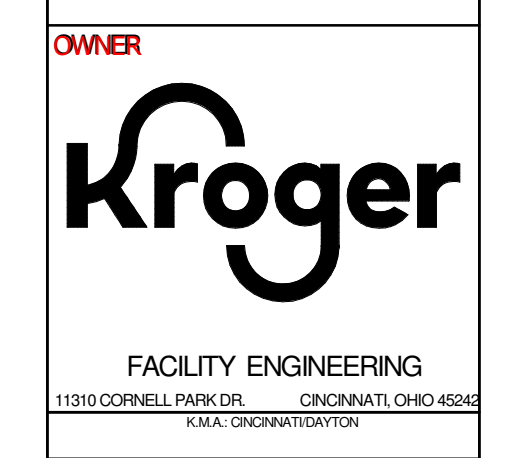
- M1 CONTRACTOR TO REFER TO HSD-3 ON M5.1 FOR DUCTWORK INSTALLATION INFORMATION.
- M2 TEMPERATURE SENSOR FOR RTU FURNISHED BY ORIGINAL EQUIPMENT MANUFACTURER. ROUTE CONTROL WIRING THROUGH RTU AND BACK TO BUILDING CONTROL PANEL. MOUNT SENSOR 9" AFF ON WALL. COORDINATE LOCATION WITH KROGER EQUIPMENT AND FURNISHINGS. PROVIDE LOCKABLE PROTECTIVE COVER OVER DEVICE.
- M5 DUCT UP TO OPENING THROUGH ROOF CAPPED WITH CURB AND KROGER FURNISHED EXHAUST FAN.
- M7 SIDEWALL DIFFUSERS TO BE INSTALLED AT 45 DEGREES DOWNWARD. REFER TO 233713.00-02 ON M5.2 FOR INSTALLATION INFORMATION.
- M8 DUCTWORK TO BE HELD TIGHT TO STRUCTURE.
- M11 INSTALL TRANSFER GRILLES IN ACCORDANCE WITH 233713.00-19 ON M5.2.
- M12 CONNECT TO EXISTING DUCT. CONTRACTOR TO VERIFY EXISTING SIZE AND LOCATION IN FIELD PRIOR TO NEW WORK. REBALANCE EXISTING SYSTEM AS NECESSARY TO ACHIEVE SPECIFIED AIRFLOWS.
- M13 DROP BOX DIFFUSER SYSTEM. REFER TO DIFFUSER SCHEDULE FOR AES MODEL, NUMBERS AND QUANTITIES. REFER TO FLOOR PLANS FOR THROW DIRECTIONS AND AIRFLOW. REFER TO DETAIL HSD-1 FOR INSTALLATION.
- M14 TEMPERATURE SENSOR FOR RTU FURNISHED BY ORIGINAL EQUIPMENT MANUFACTURER. ROUTE CONTROL WIRING THROUGH RTU AND BACK TO BUILDING CONTROL PANEL. MOUNT SENSOR 9" AFF ON WALL. COORDINATE LOCATION WITH KROGER EQUIPMENT AND FURNISHINGS. PROVIDE LOCKABLE PROTECTIVE COVER OVER DEVICE.
- M16 COMBINATION TEMPERATURE/RELATIVE HUMIDITY SENSOR FOR RTU FURNISHED BY ORIGINAL EQUIPMENT MANUFACTURER. ROUTE CONTROL WIRING THROUGH RTU AND BACK TO BUILDING CONTROL PANEL. INSTALL PROBE AT 5' AFF ON WALL. REFER TO DETAIL HSD-1 FOR DRAWINGS FOR FURTHER INFORMATION.
- M21 RETURN AIR GRILLE IN SIDE OF DUCT DROP, TITUS 50P WITH 1 INCH OPENINGS OR APPROVED EQUAL.
- M32 ROOFTOP UNIT FURNISHED BY KROGER AND INSTALLED BY MECHANICAL CONTRACTOR. BALANCE TO SCHEDULED AIRFLOW. REFER TO ARCHITECTURAL ROOF PLAN FOR HVAC ROOFTOP DIMENSIONAL INFORMATION. REFER TO STRUCTURAL DRAWINGS FOR JOIST AND BEAM LOCATIONS AND DIMENSIONAL INFORMATION.
- M33 DUCT MOUNTED SMOKE DETECTOR TO BE INSTALLED IN THE RETURN DUCTWORK, DOWNSTREAM OF FILTERS AND UPSTREAM OF ANY BRANCH CONNECTIONS. INSTALL SAMPLING TUBES AND DETECTOR HOUSING IN STRICT ACCORDANCE WITH MANUFACTURER'S INSTALLATION INSTRUCTIONS. DETECTOR, FAN SHUTDOWN WIRING, AND CONTROLS BY OTHERS.
- M38 ROOFTOP UNIT FURNISHED BY KROGER AND INSTALLED BY MECHANICAL CONTRACTOR ON NEW CURB ADAPTER. LOCATION SHOWN IS APPROXIMATE. FIELD VERIFY PRIOR TO INSTALL. REFER TO STRUCTURAL DRAWINGS FOR JOIST AND BEAM LOCATIONS AND DIMENSIONAL INFORMATION. BALANCE TO SCHEDULED AIRFLOW.
- M39 DUCT DROP SIZES SHOWN REFLECT THE SIZES AT CONNECTION TO UNIT. AFTER DISCUSSION AND APPROVAL FROM ENGINEER OF RECORD. VARYING SIZES MAY BE INSTALLED AS REQUESTED BY CONTRACTOR OR OWNER.
- M40 COORDINATE CONSTRUCTION OF WALLED BOX OUT TO HIDE DUCTWORK WITH ARCHITECTURAL SHEETS. THIS SPACE IS TO BE TREATED AS AN AIR PLenum.
- M54 COORDINATE CONSTRUCTION OF WALLED BOX OUT TO HIDE EXISTING CURB AS NECESSARY. RECONNECT TO EXISTING DUCTWORK.



CHICAGO • CINCINNATI • DALLAS
DENVER • DETROIT • SEATTLE
900.469.4949
www.a-d.com

CONSULTANTS
MECHANICAL/ELECTRICAL ENGINEERS
WWW.ALHENGERS.COM
LEWINGTON, KENTUCKY
COLUMBUS, OHIO
NEW YORK, NEW YORK

SEKLH ENGINEERS
KOHRS/LOHMANN/HELME ENGINEERS, INC.
1559 ALEXANDRIA PIKE, SUITE 11
BOWLING GREEN, OHIO 43402
609.445.8058 FAX



FACILITY ENGINEERING
11310 CORNELL PARK DR. CLEVELAND, OHIO 44124
1/12/2023 BID/PERMIT ISSUE

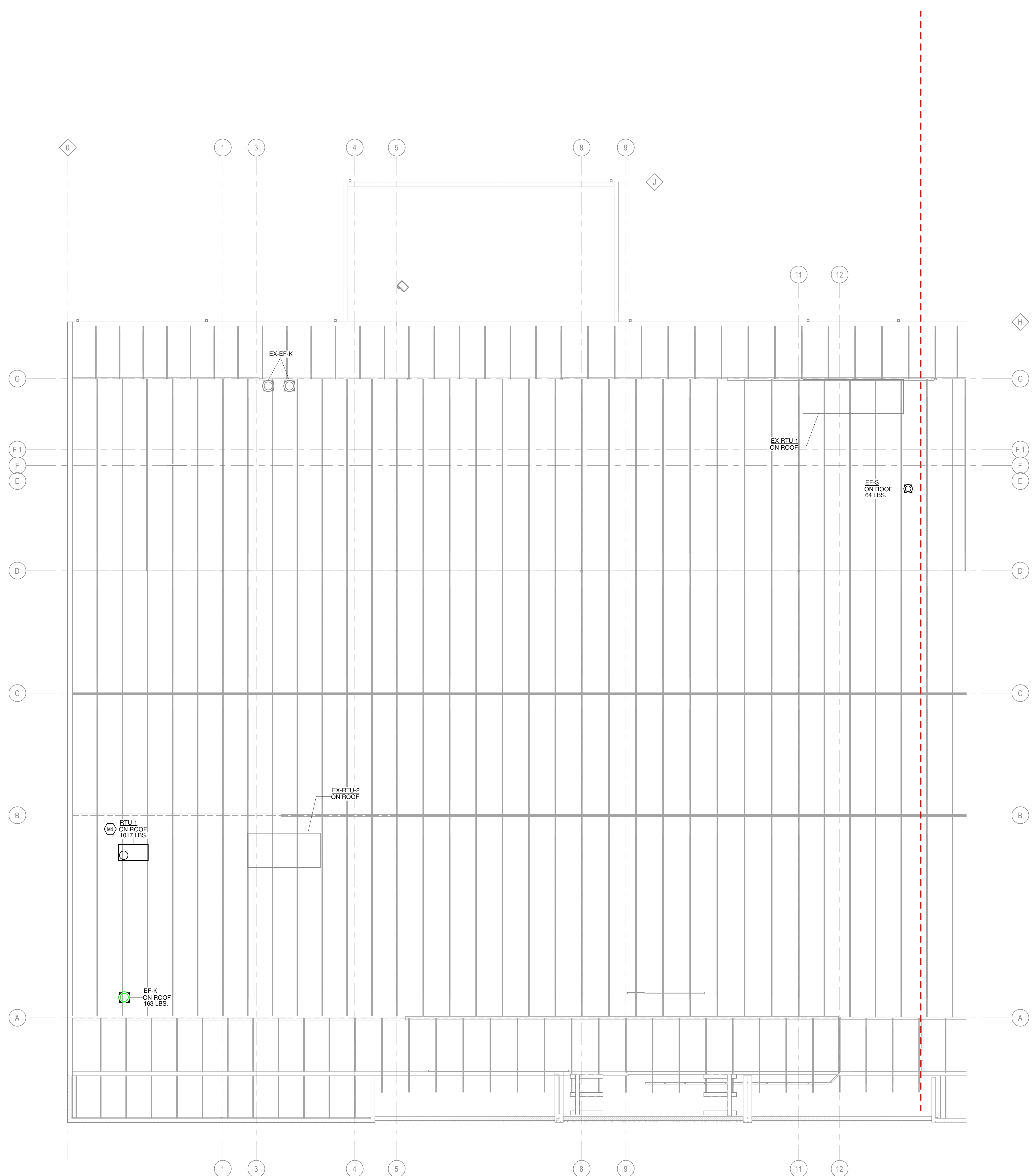
REVISION	DATE	DESCRIPTION
3	10/25/2023	BULLETIN NO. 3
9	02/19/2025	BULLETIN NO. 10

EXECUTED BY: TDS
REVIEWED BY: KSL
PROJECT TITLE
**KROGER STORE
A921**
1099 S.R. 28 BY-PASS
MILFORD, OH 45150
COMMISSION NO. 522342
ISSUE DATE 01/27/2023
SHEET TITLE
**HVAC FLOOR PLAN
- RIGHT**
SHEET NO.
M1.1b
© 2022 Cole-Russell Architects, Inc.

THIS DOCUMENT IS THE PROPERTY OF COLE-RUSSELL ARCHITECTS, INC. NEITHER THE DOCUMENT NOR THE INFORMATION CONTAINED HEREIN MAY BE COPIED OR USED FOR OTHER THAN THE SPECIFIC PROJECT FOR WHICH IT WAS PREPARED WITHOUT THE EXPRESS WRITTEN CONSENT OF COLE-RUSSELL ARCHITECTS, INC.
2/20/2025 10:38:51 AM

KEYED NOTES

M4 REFER TO ARCHITECTURAL ROOF PLAN FOR HVAC ROOFTOP DIMENSIONAL INFORMATION. REFER TO STRUCTURAL DRAWINGS FOR JOIST AND BEAM LOCATIONS AND DIMENSIONAL INFORMATION.



1 HVAC ROOF PLAN - LEFT
3/32" = 1'-0"



CHICAGO • CINCINNATI • DALLAS
DENVER • DETROIT • SEATTLE
800.459.4949
www.cr-architects.com

CONSULTANTS
MECHANICAL/ELECTRICAL ENGINEERS
WWW.ALHEIMERS.COM
LEWINGTON, KENTUCKY
COLUMBUS, OHIO
NEW YORK, NEW YORK
SEKLN ENGINEERS
KOHRS/LOHMEYER/HILL ENGINEERS, INC.
1558 ALEXANDRIA PIKE, SUITE 11
BOWLING GREEN, OHIO 43402
601.354.3975 FAX 601.354.3970
889.442.8058 FAX



FACILITY ENGINEERING
11210 CORNELL PARK DR. CINCINNATI, OH 45242
KSA 12020001001001

ISSUE	DATE	DESCRIPTION
	12/14/2022	90% KROGER REVIEW
	01/27/2023	BD/PERMIT ISSUE

REVISION	#	DATE	DESCRIPTION

EXECUTED BY: TDS
REVIEWED BY: KSL

PROJECT TITLE
**KROGER STORE
A921**

1099 S.R. 28 BY-PASS
MILFORD, OH 45150

COMMISSION NO. 522342
ISSUE DATE 01/27/2023

SHEET TITLE
**HVAC ROOF PLAN -
LEFT**

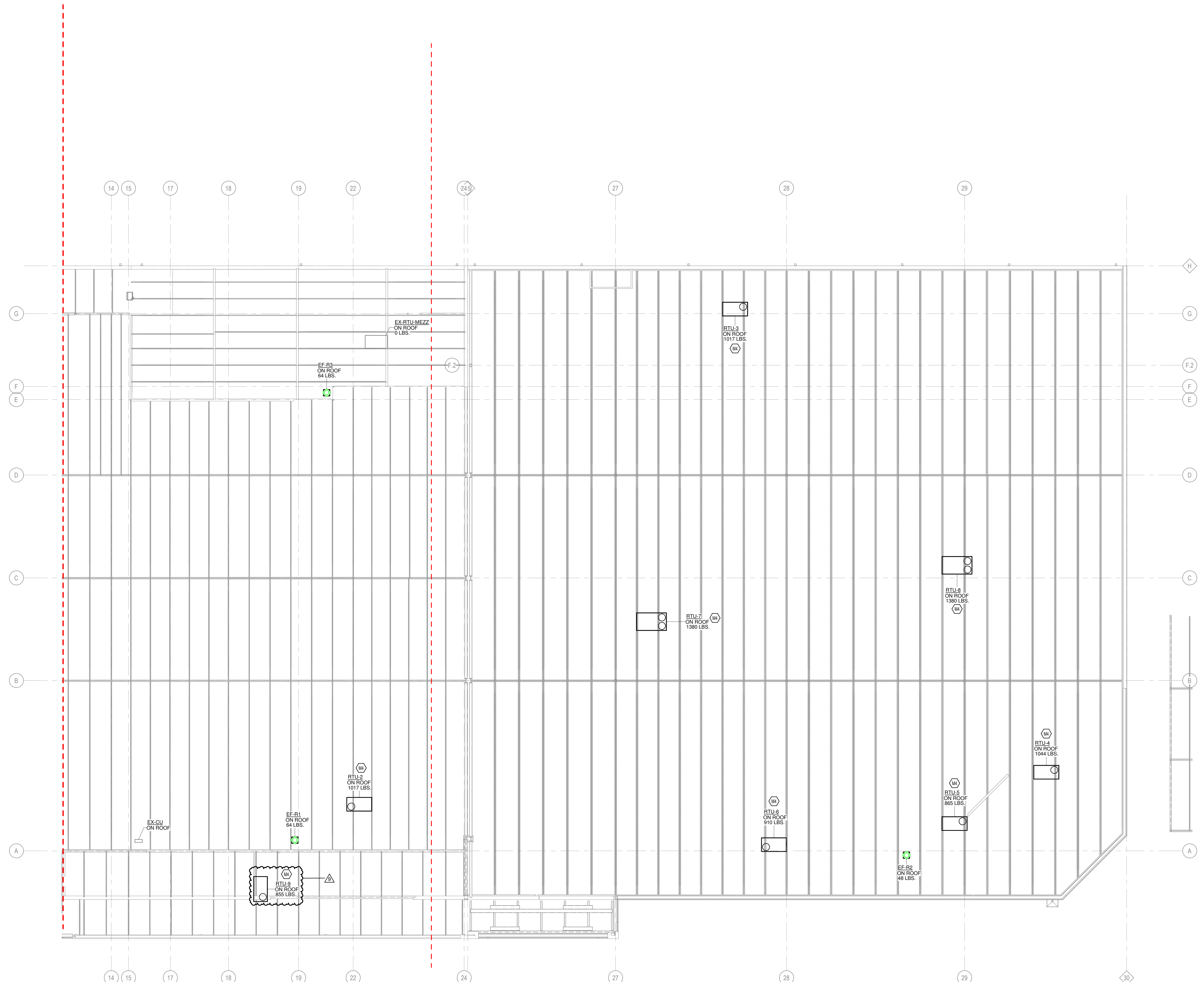
SHEET NO.
M1.2a

© 2022 Cole+Russell Architects, Inc.

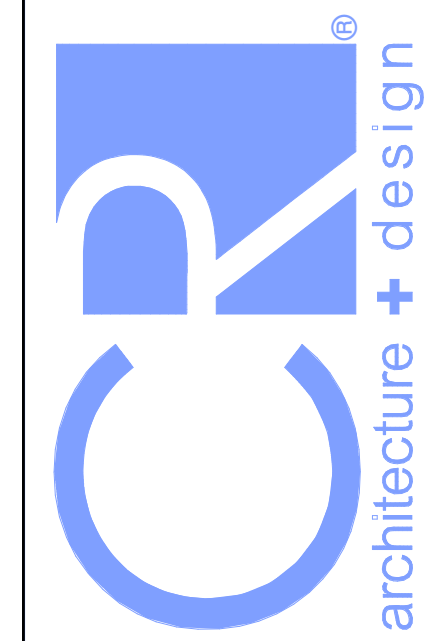
THIS DOCUMENT IS THE PROPERTY OF COLE+RUSSELL ARCHITECTS, INC. NEITHER THE DOCUMENT NOR THE INFORMATION CONTAINED HEREIN MAY BE COPIED OR USED FOR OTHER THAN THE SPECIFIC PROJECT FOR WHICH IT WAS PREPARED WITHOUT THE EXPRESS WRITTEN CONSENT OF COLE+RUSSELL ARCHITECTS, INC.
1/27/2023 1:54:38 PM

KEYED NOTES

M4 REFER TO ARCHITECTURAL ROOF PLAN FOR HVAC ROOFTOP DIMENSIONAL INFORMATION. REFER TO STRUCTURAL DRAWINGS FOR JOIST AND BEAM LOCATIONS AND DIMENSIONAL INFORMATION.



1 HVAC ROOF PLAN - RIGHT
 3/32" = 1'-0"



CHICAGO • CINCINNATI • DALLAS
 DENVER • DETROIT • SEATTLE

800.469.4949
 www.a-d-architects.com

CONSULTANTS

MECHANICAL/ELECTRICAL ENGINEERS
 WWW.ALHEMERS.COM
 LEWINGTON, KENTUCKY
 COLUMBUS, OHIO
 NEW YORK, NEW YORK

SEKLH ENGINEERS
 KOFERS LOHMEYER HELL ENGINEERS, INC.
 1558 ALEXANDRIA PIKE, SUITE 11
 COLUMBUS, OHIO 43240
 614.294.9788 FAX 614.294.9700
 855-445-8058 FAX

OWNER



FACILITY ENGINEERING
 11210 CORNELL PARK DR. CINCINNATI, OHIO 45242
 FAX 513.963.0700

ISSUE	DATE	DESCRIPTION
	12/14/2022	90% KROGER REVIEW
	01/27/2023	BIDPERMIT ISSUE

REVISION	#	DATE	DESCRIPTION
	9	02/19/2025	BULLETIN NO.10

EXECUTED BY: TDS

REVIEWED BY: KSL

PROJECT TITLE
**KROGER STORE
 A921**

1090 S.R. 28 BY-PASS
 MILFORD, OH 45150

COMMISSION NO. 522342

ISSUE DATE 01/27/2023

SHEET TITLE
**HVAC ROOF PLAN -
 RIGHT**

SHEET NO.

M1.2b

© 2022 Cole-Russell Architects, Inc.

THIS DOCUMENT IS THE PROPERTY OF COLE-RUSSELL ARCHITECTS, INC. NEITHER THE DOCUMENT NOR THE INFORMATION IT CONTAINS MAY BE COPIED OR USED FOR OTHER THAN THE SPECIFIC PROJECT FOR WHICH IT WAS PREPARED WITHOUT THE EXPRESS WRITTEN CONSENT OF COLE-RUSSELL ARCHITECTS, INC.
 2/19/2025 4:27:51 PM

