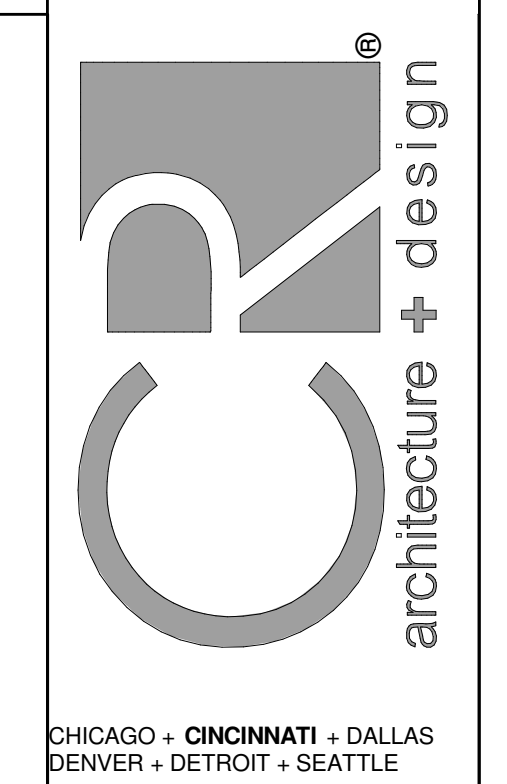


**KEYED NOTES**

- M2 TEMPERATURE SENSOR FOR RTU FURNISHED BY ORIGINAL EQUIPMENT MANUFACTURER. ROUTE CONTROL WIRING THROUGH RTU AND BACK TO BUILDING CONTROL PANEL. MOUNT SENSOR 5'-0" AFF ON WALL. COORDINATE LOCATION WITH KROGER EQUIPMENT AND FURNISHINGS. PROVIDE LOCKABLE PROTECTIVE COVER OVER DEVICE.
- M5 DUCT UP TO OPENING THROUGH ROOF-CAPPED WITH CURB AND KROGER FURNISHED EXHAUST FAN.
- M10 GREASE DUCT FROM EXHAUST HOOD TO OPENING THROUGH ROOF PER NFPA 96. MECHANICAL CONTRACTOR TO INSTALL PROVIDED HINGE KIT. DUCTWRAP IS TO RUN THE ENTIRE LENGTH OF GREASE DUCT FROM CEILING PENETRATION TO FAN. REFER TO HSD-4A AND HSD-4B ON M5.1, AND BOTH 233813.00-04 AND 233813.00-02 ON M5.2 FOR ADDITIONAL INFORMATION.
- M11 INSTALL TRANSFER GRILLES IN ACCORDANCE WITH 233713.00-19 ON M5.2.
- M12 CONNECT TO EXISTING DUCT. CONTRACTOR TO VERIFY EXISTING SIZE AND LOCATION IN FIELD PRIOR TO NEW WORK. REBALANCE EXISTING SYSTEM AS NECESSARY TO ACHIEVE SPECIFIED AIRFLOWS.
- M18 DIFFUSER AROUND HOOD TO BE A 2-WAY DIFFUSER FACING AWAY FROM THE HOOD TO PREVENT INTERFERENCE WITH THE HOODS CONTAIN AND CAPTURE.
- M24 HOOD ANSUL PULL STATION LOCATION. COORDINATE FINAL LOCATION WITH ELECTRICAL PLANS. PROVIDE NAMEPLATE AT STATION WITH HOOD NUMBER AND LOCATIONS. REFERENCE HSD-4A FOR ADDITIONAL INFORMATION.
- M32 ROOFTOP UNIT FURNISHED BY KROGER AND INSTALLED BY MECHANICAL CONTRACTOR. BALANCE TO SCHEDULED AIRFLOW. REFER TO ARCHITECTURAL ROOF PLAN FOR HVAC ROOFTOP DIMENSIONAL INFORMATION. REFER TO STRUCTURAL DRAWINGS FOR JOIST AND BEAM LOCATIONS AND DIMENSIONAL INFORMATION.
- M33 DUCT MOUNTED SMOKE DETECTOR TO BE INSTALLED IN THE RETURN DUCTWORK, DOWNSTREAM OF FILTERS AND UPSTREAM OF ANY BRANCH CONNECTIONS. INSTALL SAMPLING TUBES(S) AND DETECTOR HOUSING IN STRICT ACCORDANCE WITH MANUFACTURER'S INSTALLATION INSTRUCTIONS. DETECTOR, FAN SHUTDOWN WIRING, AND CONTROLS BY OTHERS.
- M37 INSTALL TOP OF RETURN GRILLE 15'-0" AFF IN SOFFIT. COORDINATE FINAL LOCATION WITH ARCHITECT AND WITH DECOR. LOCATION OF DECOR TAKES PRECEDENCE OVER LOCATION OF RETURN GRILLE.
- M94 PROVIDE NEW EXHAUST FAN ON EXISTING CURB, MODIFYING EXISTING CURB AS NECESSARY. RECONNECT TO EXISTING DUCTWORK.



CHICAGO • CINCINNATI • DALLAS  
DENVER • DETROIT • SEATTLE

800.469.4949  
www.c-a-architects.com

**CONSULTANTS**

MECHANICAL/ELECTRICAL ENGINEERS  
WWW.ALHEMERS.COM  
LEWINGTON, KENTUCKY  
COLUMBUS, OHIO  
NEW YORK, NEW YORK

**SEKELH ENGINEERS**  
KOHRS/LOHMANN HELL ENGINEERS, INC.  
1539 ALEXANDRIA PIKE, SUITE 11  
BIRMINGHAM, AL 35244-2600  
859-442-8058 FAX



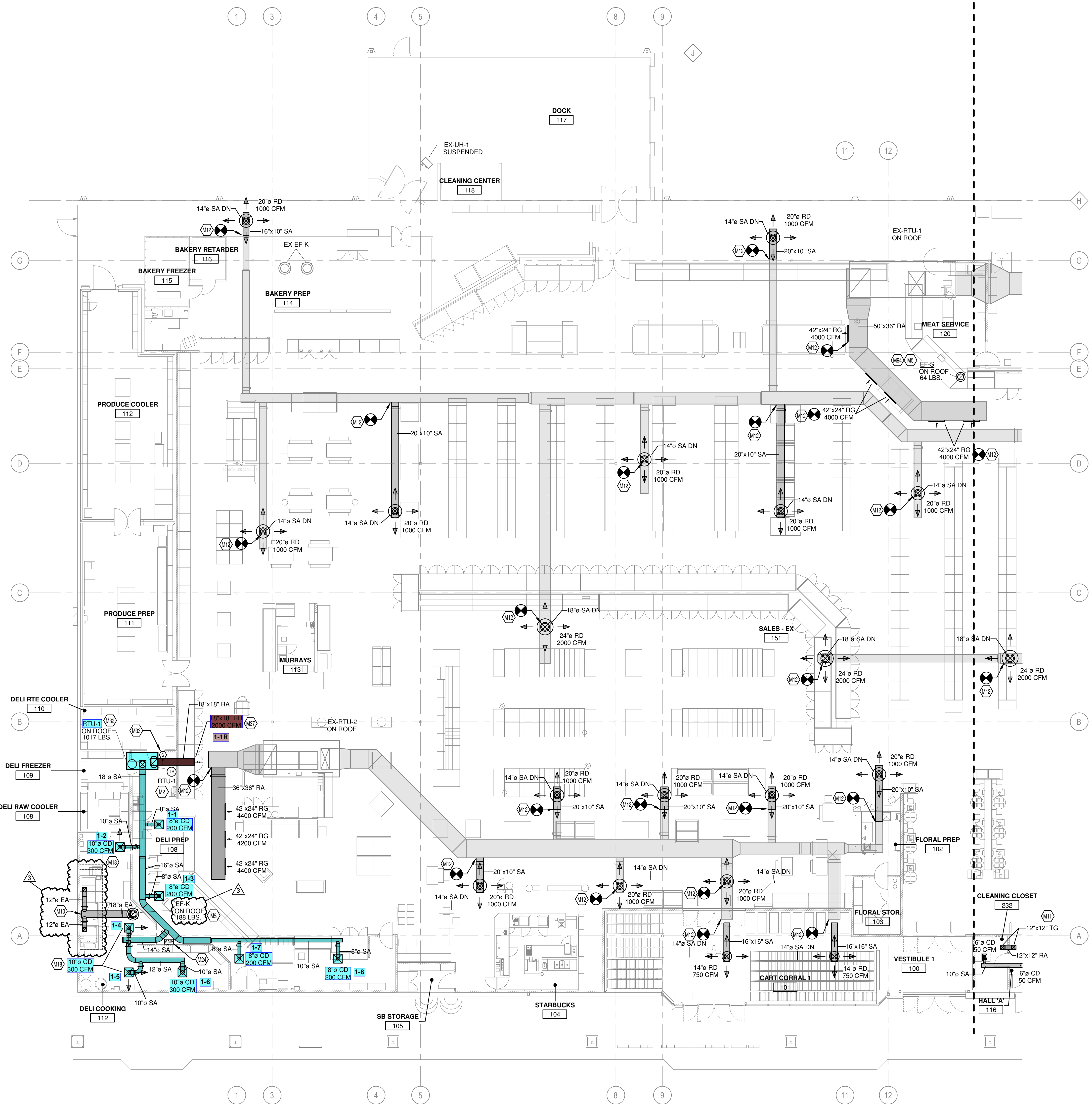
**FACILITY ENGINEERING**  
11210 DORRILL PARK DR. CINCINNATI, OH 45242  
KSA 1202007070707

DATE	DESCRIPTION
12/14/2022	90% KROGER REVIEW
01/27/2023	BIDPERMIT ISSUE

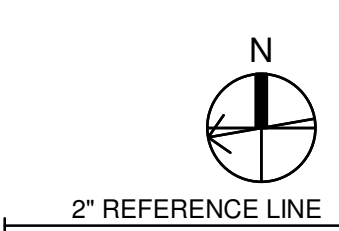
REVISION	DATE	DESCRIPTION
3	10/25/2023	BULLETIN NO. 3

EXECUTED BY: TDS  
REVIEWED BY: KSL  
PROJECT TITLE  
**KROGER STORE  
A921**  
1099 S.R. 28 BY-PASS  
MILFORD, OH 45150  
COMMISSION NO. 522342  
ISSUE DATE 01/27/2023  
SHEET TITLE  
**HVAC FLOOR PLAN  
- LEFT**

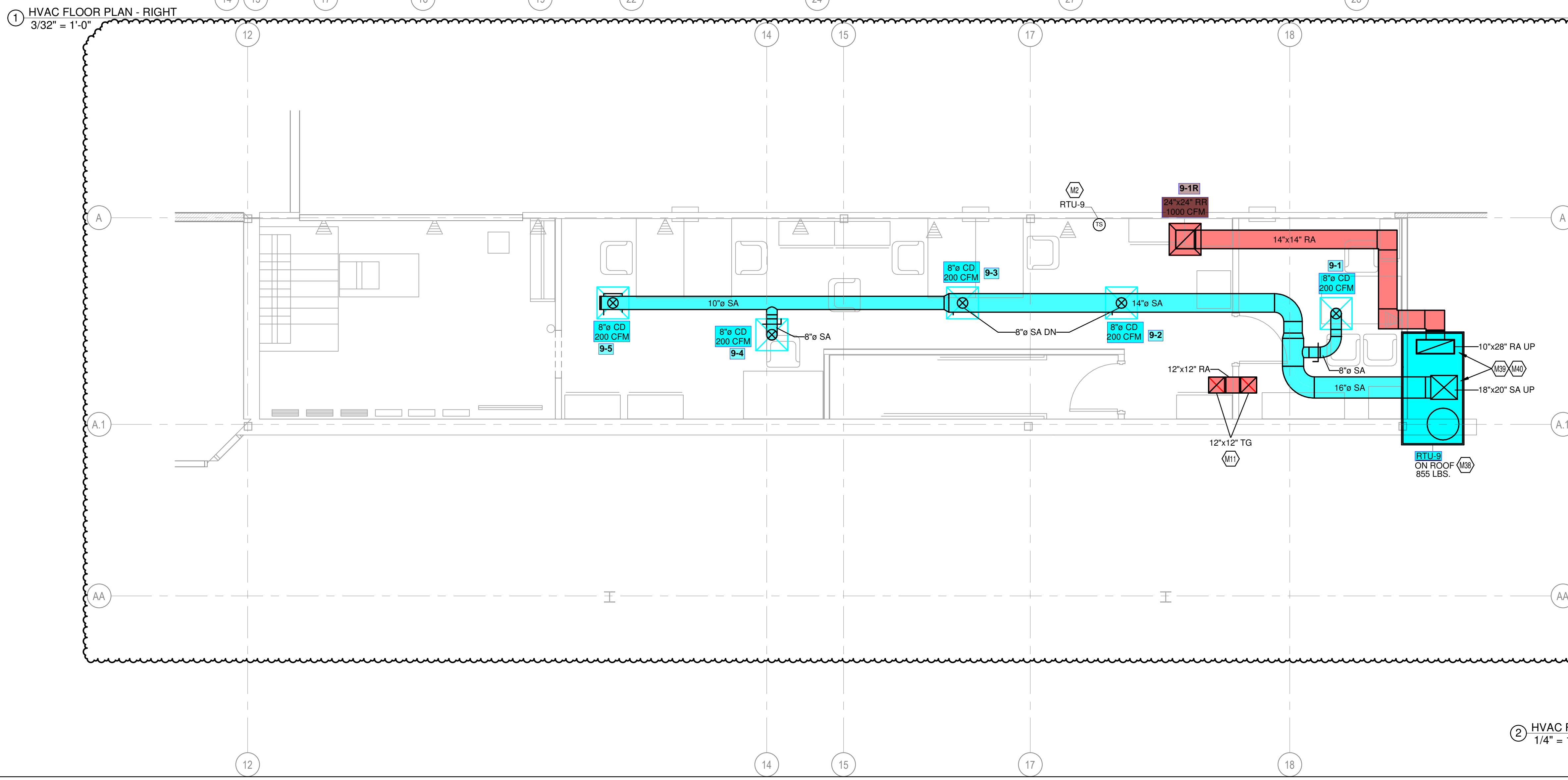
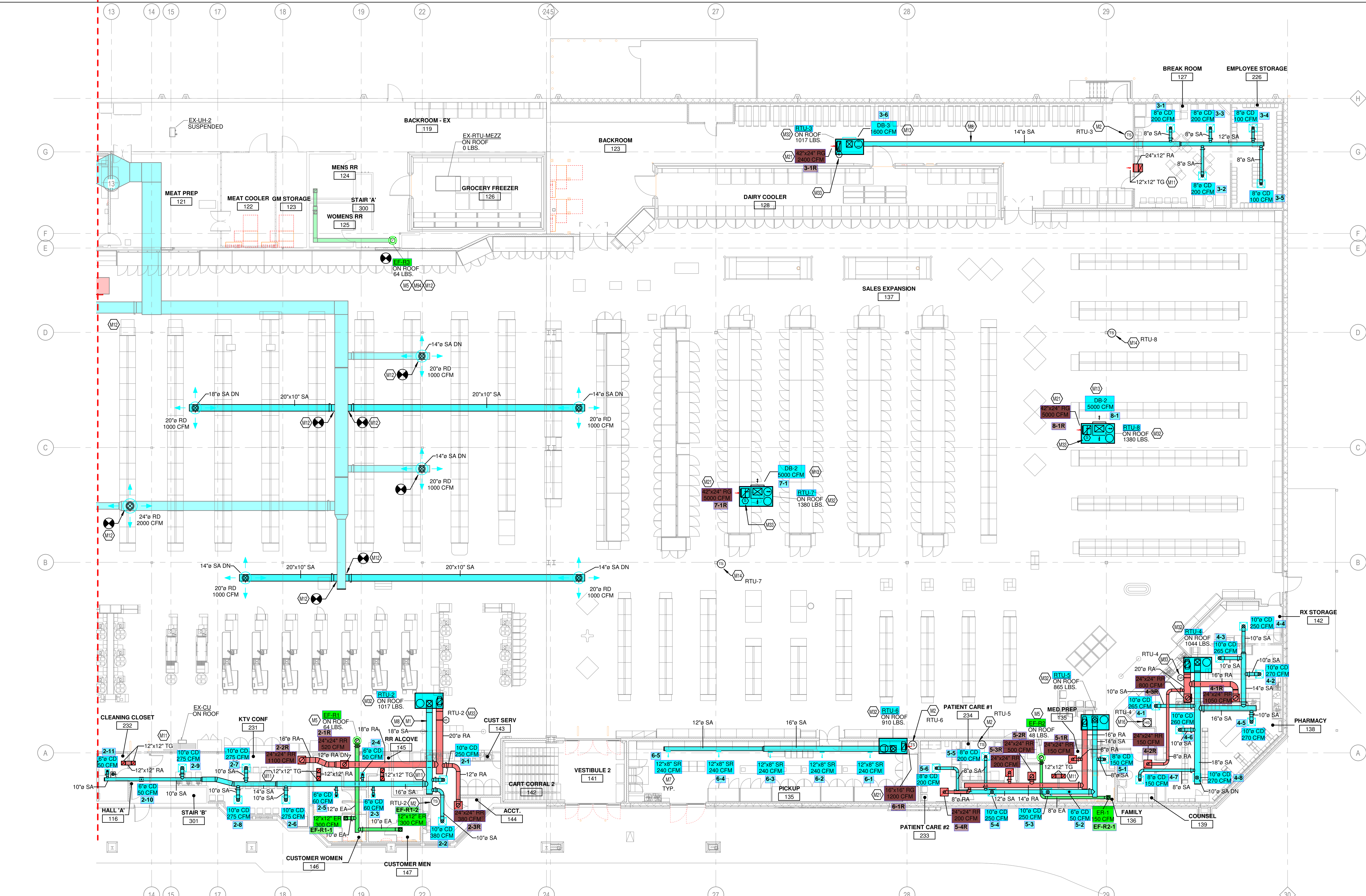
SHEET NO.  
**M1.1a**  
© 2022 Cole+Russell Architects, Inc.



1 HVAC FLOOR PLAN - LEFT  
3/32" = 1'-0"

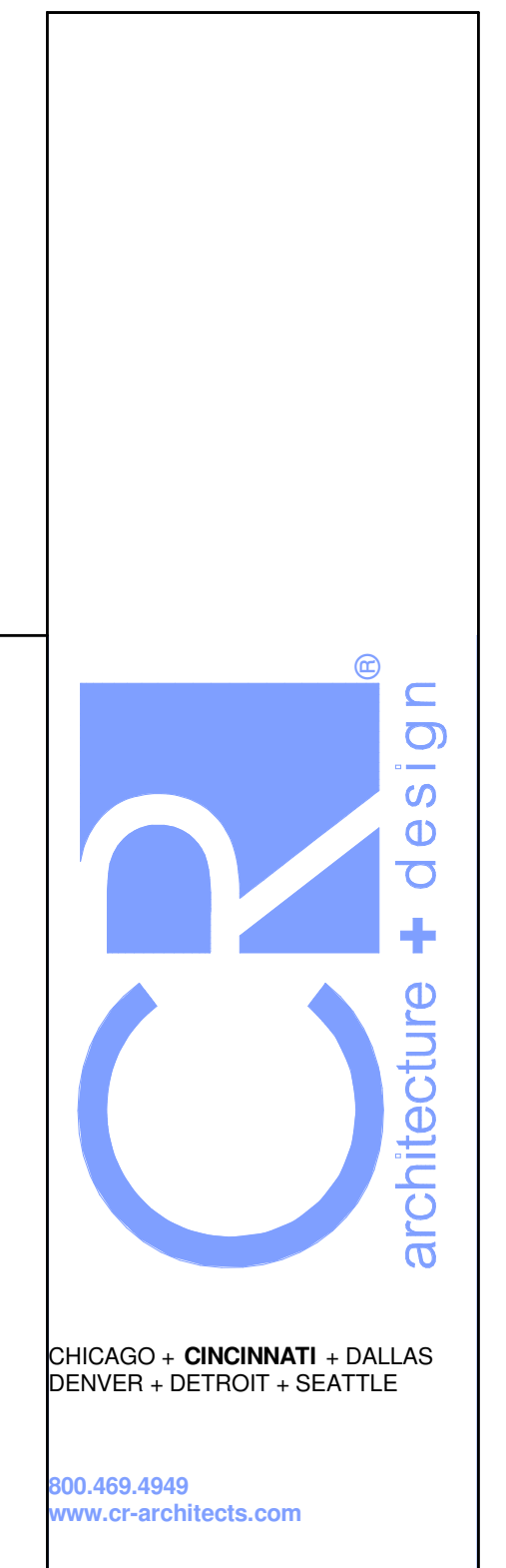


THIS DOCUMENT IS THE PROPERTY OF COLE+RUSSELL ARCHITECTS, INC. NEITHER THE DOCUMENT NOR THE INFORMATION CONTAINED HEREIN MAY BE COPIED OR USED FOR OTHER THAN THE SPECIFIC PROJECT FOR WHICH IT WAS PREPARED WITHOUT THE EXPRESS WRITTEN CONSENT OF COLE+RUSSELL ARCHITECTS, INC.  
10/25/2023 2:11:57 PM



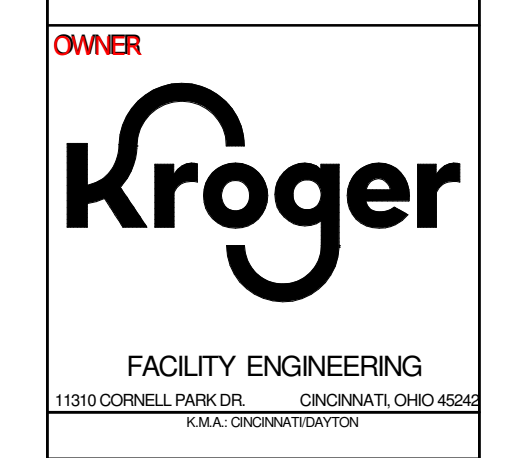
**KEYED NOTES**

- M1 CONTRACTOR TO REFER TO HSD-3 ON M5.1 FOR DUCTWORK INSTALLATION INFORMATION.
- M2 TEMPERATURE SENSOR FOR RTU FURNISHED BY ORIGINAL EQUIPMENT MANUFACTURER. ROUTE CONTROL WIRING THROUGH RTU AND BACK TO BUILDING CONTROL PANEL. MOUNT SENSOR 9" AFF ON WALL. COORDINATE LOCATION WITH KROGER EQUIPMENT AND FURNISHINGS. PROVIDE LOCKABLE PROTECTIVE COVER OVER DEVICE.
- M5 DUCT UP TO OPENING THROUGH ROOF CAPPED WITH CURB AND KROGER FURNISHED EXHAUST FAN.
- M7 SIDEWALL DIFFUSERS TO BE INSTALLED AT 45 DEGREES DOWNWARD. REFER TO 233713.00-02 ON M5.2 FOR INSTALLATION INFORMATION.
- M8 DUCTWORK TO BE HELD TIGHT TO STRUCTURE.
- M11 INSTALL TRANSFER GRILLES IN ACCORDANCE WITH 233713.00-19 ON M5.2.
- M12 CONNECT TO EXISTING DUCT. CONTRACTOR TO VERIFY EXISTING SIZE AND LOCATION IN FIELD PRIOR TO NEW WORK. REBALANCE EXISTING SYSTEM AS NECESSARY TO ACHIEVE SPECIFIED AIRFLOWS.
- M13 DROP BOX DIFFUSER SYSTEM. REFER TO DIFFUSER SCHEDULE FOR AES MODEL, NUMBERS AND QUANTITIES. REFER TO FLOOR PLANS FOR THROW DIRECTIONS AND AIRFLOW. REFER TO DETAIL HSD-1 FOR INSTALLATION.
- M14 TEMPERATURE SENSOR FOR RTU FURNISHED BY ORIGINAL EQUIPMENT MANUFACTURER. ROUTE CONTROL WIRING THROUGH RTU AND BACK TO BUILDING CONTROL PANEL. MOUNT SENSOR 9" AFF ON WALL. COORDINATE LOCATION WITH KROGER EQUIPMENT AND FURNISHINGS. PROVIDE LOCKABLE PROTECTIVE COVER OVER DEVICE.
- M16 COMBINATION TEMPERATURE/RELATIVE HUMIDITY SENSOR FOR RTU FURNISHED BY ORIGINAL EQUIPMENT MANUFACTURER. ROUTE CONTROL WIRING THROUGH RTU AND BACK TO BUILDING CONTROL PANEL. INSTALL PROBE AT 5" AFF ON WALL. REFER TO DETAIL HSD-1 FOR DRAWINGS FOR FURTHER INFORMATION.
- M21 RETURN AIR GRILLE IN SIDE OF DUCT DROP, TITUS 50P WITH 1 INCH OPENINGS OR APPROVED EQUAL.
- M32 ROOFTOP UNIT FURNISHED BY KROGER AND INSTALLED BY MECHANICAL CONTRACTOR. BALANCE TO SCHEDULED AIRFLOW. REFER TO ARCHITECTURAL ROOF PLAN FOR HVAC ROOFTOP DIMENSIONAL INFORMATION. REFER TO STRUCTURAL DRAWINGS FOR JOIST AND BEAM LOCATIONS AND DIMENSIONAL INFORMATION.
- M33 DUCT MOUNTED SMOKE DETECTOR TO BE INSTALLED IN THE RETURN DUCTWORK, DOWNSTREAM OF FILTERS AND UPSTREAM OF ANY BRANCH CONNECTIONS. INSTALL SAMPLING TUBES AND DETECTOR HOUSING IN STRICT ACCORDANCE WITH MANUFACTURER'S INSTALLATION INSTRUCTIONS. DETECTOR, FAN SHUTDOWN WIRING, AND CONTROLS BY OTHERS.
- M38 ROOFTOP UNIT FURNISHED BY KROGER AND INSTALLED BY MECHANICAL CONTRACTOR ON NEW CURB ADAPTER. LOCATION SHOWN IS APPROXIMATE. FIELD VERIFY PRIOR TO INSTALL. REFER TO STRUCTURAL DRAWINGS FOR JOIST AND BEAM LOCATIONS AND DIMENSIONAL INFORMATION. BALANCE TO SCHEDULED AIRFLOW.
- M39 DUCT DROP SIZES SHOWN REFLECT THE SIZES AT CONNECTION TO UNIT. AFTER DISCUSSION AND APPROVAL FROM ENGINEER OF RECORD, VARYING SIZES MAY BE INSTALLED AS REQUESTED BY CONTRACTOR OR OWNER.
- M40 COORDINATE CONSTRUCTION OF WALLED BOX OUT TO HIDE DUCTWORK WITH ARCHITECTURAL SHEETS. THIS SPACE IS TO BE TREATED AS AN AIR PLenum.
- M54 COMBINATION TEMPERATURE/RELATIVE HUMIDITY SENSOR FOR RTU FURNISHED BY ORIGINAL EQUIPMENT MANUFACTURER. ROUTE CONTROL WIRING THROUGH RTU AND BACK TO BUILDING CONTROL PANEL. MOUNT SENSOR 9" AFF ON WALL. COORDINATE LOCATION WITH KROGER EQUIPMENT AND FURNISHINGS. PROVIDE LOCKABLE PROTECTIVE COVER OVER DEVICE.



CHICAGO • CINCINNATI • DALLAS  
DENVER • DETROIT • SEATTLE  
300.469.4949  
www.architects.com

CONSULTANTS  
MECHANICAL/ELECTRICAL ENGINEERS  
WWW.ALHENGERS.COM  
**SEKLH ENGINEERS**  
KOHRS/LOHMANN/HELME ENGINEERS, INC.  
1559 ALEXANDRIA PIKE, SUITE 11  
COLUMBUS, OH 43260  
614.291.8800  
614.442.8058 FAX



FACILITY ENGINEERING  
11319 CORNELL PARK DR. CINCINNATI, OH 45244  
ISSUE

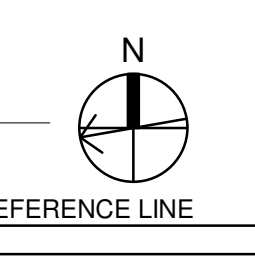
DATE	DESCRIPTION
12/14/2022	90% KROGER REVIEW
01/27/2023	BID/PERMIT ISSUE

REVISION	DATE	DESCRIPTION
3	10/25/2023	BULLETIN NO. 3
9	02/19/2025	BULLETIN NO. 10

EXECUTED BY: TDS  
REVIEWED BY: KSL  
PROJECT TITLE  
**KROGER STORE A921**  
1099 S.R. 28 BY-PASS  
MILFORD, OH 45150  
COMMISSION NO. 522342  
ISSUE DATE 01/27/2023  
SHEET TITLE  
**HVAC FLOOR PLAN - RIGHT**

SHEET NO.  
**M1.1b**  
© 2022 Cole+Russell Architects, Inc.

THIS DOCUMENT IS THE PROPERTY OF COLE+RUSSELL ARCHITECTS, INC. NEITHER THE DOCUMENT NOR THE INFORMATION CONTAINED HEREIN MAY BE COPIED OR USED FOR OTHER THAN THE SPECIFIC PROJECT FOR WHICH IT WAS PREPARED WITHOUT THE EXPRESS WRITTEN CONSENT OF COLE+RUSSELL ARCHITECTS, INC.  
2/20/2025 10:38:51 AM



② HVAC FLOOR PLAN - OFFICE MEZZANINE  
1/4" = 1'-0"

① HVAC FLOOR PLAN - RIGHT  
3/32" = 1'-0"