

KEYED NOTES

- M2 TEMPERATURE SENSOR FOR RTU FURNISHED BY ORIGINAL EQUIPMENT MANUFACTURER. ROUTE CONTROL WIRING THROUGH RTU AND BACK TO BUILDING CONTROL PANEL. MOUNT SENSOR 5'-0" AFF ON WALL. COORDINATE LOCATION WITH KROGER EQUIPMENT AND FURNISHINGS. PROVIDE LOCKABLE PROTECTIVE COVER OVER DEVICE.
- M5 DUCT UP TO OPENING THROUGH ROOF-CAPPED WITH CURB AND KROGER FURNISHED EXHAUST FAN.
- M10 GREASE DUCT FROM EXHAUST HOOD TO OPENING THROUGH ROOF PER NFPA 98. MECHANICAL CONTRACTOR TO INSTALL PROVIDED HINGE KIT. DUCTWRAP IS TO RUN THE ENTIRE LENGTH OF GREASE DUCT FROM CEILING PENETRATION TO FAN. REFER TO HSD-4A AND HSD-4B ON M5.1, AND BOTH 233813.00-04 AND 233813.00-02 ON M5.2 FOR ADDITIONAL INFORMATION.
- M11 INSTALL TRANSFER GRILLES IN ACCORDANCE WITH 233713.00-19 ON M5.2.
- M12 CONNECT TO EXISTING DUCT. CONTRACTOR TO VERIFY EXISTING SIZE AND LOCATION IN FIELD PRIOR TO NEW WORK. REBALANCE EXISTING SYSTEM AS NECESSARY TO ACHIEVE SPECIFIED AIRFLOWS.
- M18 DIFFUSER AROUND HOOD TO BE A 2-WAY DIFFUSER FACING AWAY FROM THE HOOD TO PREVENT INTERFERENCE WITH THE HOODS CONTAIN AND CAPTURE.
- M24 HOOD ANSUL PULL STATION LOCATION. COORDINATE FINAL LOCATION WITH ELECTRICAL PLANS. PROVIDE NAMEPLATE AT STATION WITH HOOD NUMBER AND LOCATIONS. REFERENCE HSD-4A FOR ADDITIONAL INFORMATION.
- M32 ROOFTOP UNIT FURNISHED BY KROGER AND INSTALLED BY MECHANICAL CONTRACTOR. BALANCE TO SCHEDULED AIRFLOW. REFER TO ARCHITECTURAL ROOF PLAN FOR HVAC ROOFTOP DIMENSIONAL INFORMATION. REFER TO STRUCTURAL DRAWINGS FOR JOIST AND BEAM LOCATIONS AND DIMENSIONAL INFORMATION.
- M33 DUCT MOUNTED SMOKE DETECTOR TO BE INSTALLED IN THE RETURN DUCTWORK, DOWNSTREAM OF FILTERS AND UPSTREAM OF ANY BRANCH CONNECTIONS. INSTALL SAMPLING TUBES(S) AND DETECTOR HOUSING IN STRICT ACCORDANCE WITH MANUFACTURER'S INSTALLATION INSTRUCTIONS. DETECTOR, FAN SHUTDOWN WIRING, AND CONTROLS BY OTHERS.
- M37 INSTALL TOP OF RETURN GRILLE 15'-0" AFF IN SOFFIT. COORDINATE FINAL LOCATION WITH ARCHITECT AND WITH DECOR. LOCATION OF DECOR TAKES PRECEDENCE OVER LOCATION OF RETURN GRILLE.
- M94 PROVIDE NEW EXHAUST FAN ON EXISTING CURB, MODIFYING EXISTING CURB AS NECESSARY. RECONNECT TO EXISTING DUCTWORK.



CHICAGO • CINCINNATI • DALLAS
DENVER • DETROIT • SEATTLE

800.469.4949
www.c-a-architects.com

CONSULTANTS

MECHANICAL/ELECTRICAL ENGINEERS
WWW.ALHEMERS.COM
LEWINGTON, KENTUCKY
COLUMBUS, OHIO
NEW YORK, NEW YORK

SEKELH ENGINEERS
KOHRS LOENMANN HELL ENGINEERS, INC.
1559 ALEXANDRIA PIKE, SUITE 11
BOWLING GREEN, OHIO 43402
889-442-8098 FAX

OWNER



FACILITY ENGINEERING
11310 CORNELL PARK DR. CINCINNATI, OHIO 45242
KSA 12020007001001

DATE	DESCRIPTION
12/14/2022	90% KROGER REVIEW
01/27/2023	BIDPERMIT ISSUE

REVISION	DATE	DESCRIPTION
3	10/25/2023	BULLETIN NO. 3

EXECUTED BY: TDS

REVIEWED BY: KSL

PROJECT TITLE

KROGER STORE A921

1099 S.R. 28 BY-PASS
MILFORD, OH 45150

COMMISSION NO. 522342

ISSUE DATE 01/27/2023

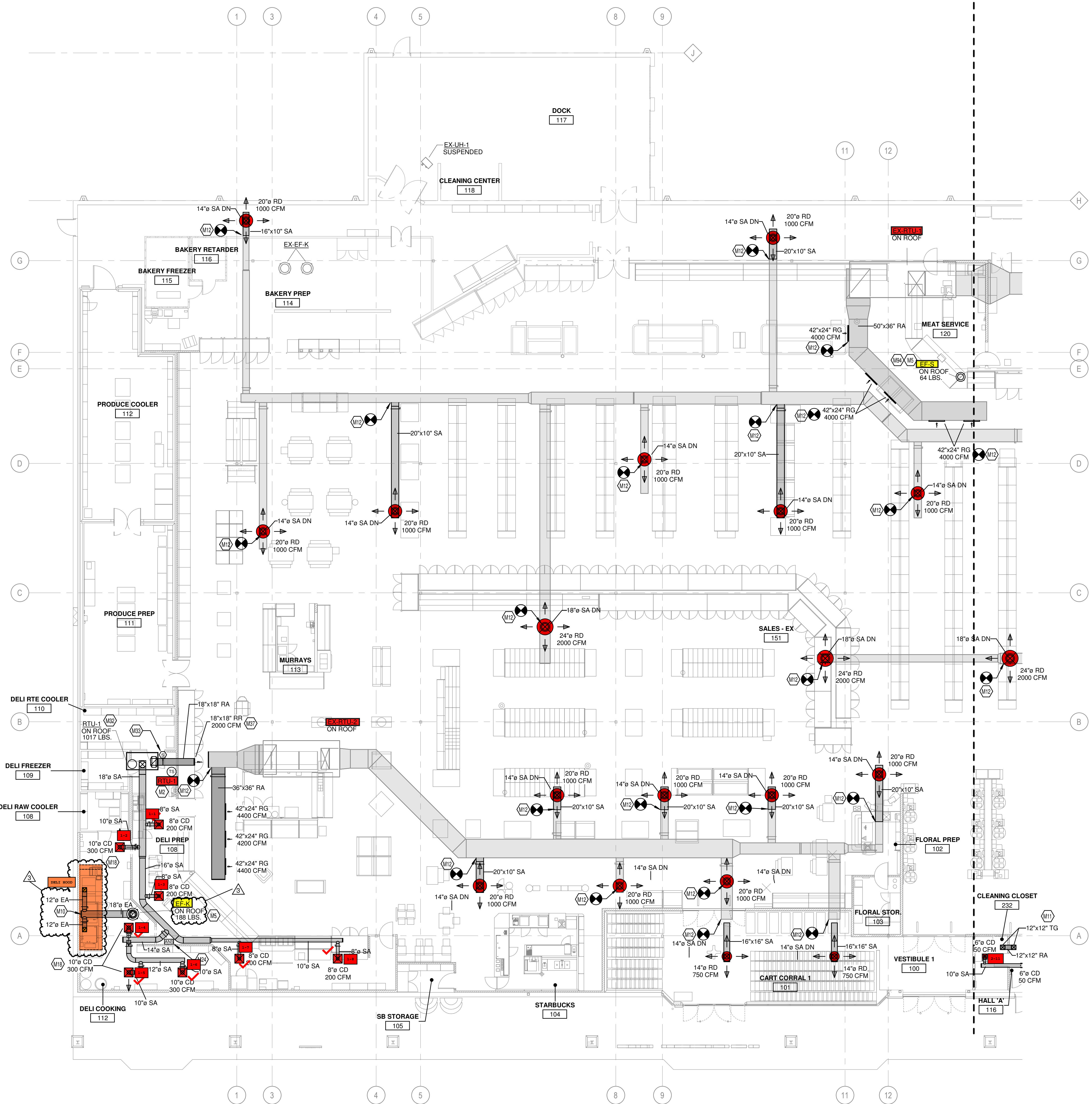
SHEET TITLE

HVAC FLOOR PLAN - LEFT

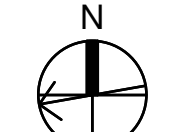
SHEET NO.

M1.1a

© 2022 Cole-Russell Architects, Inc.

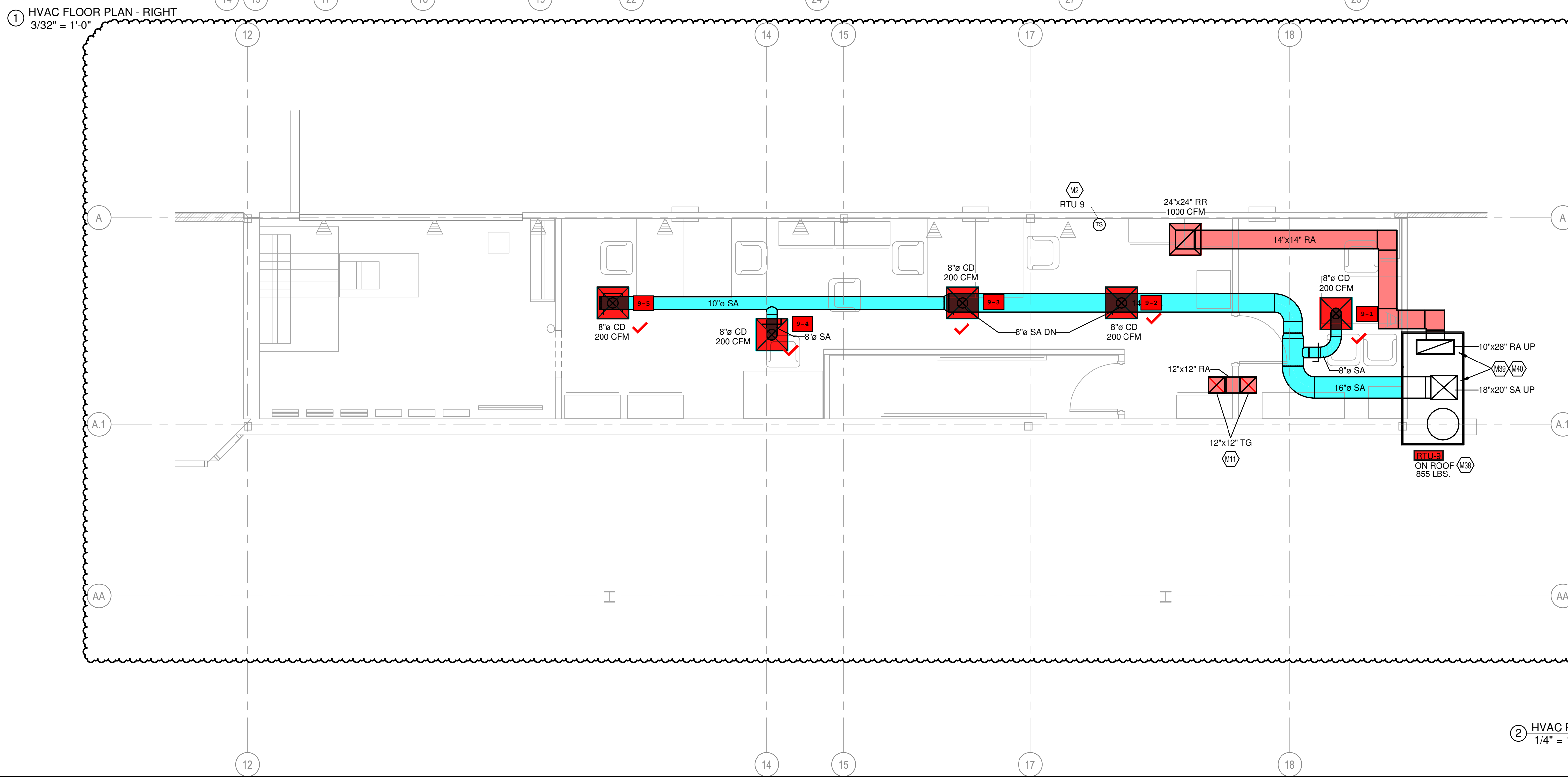
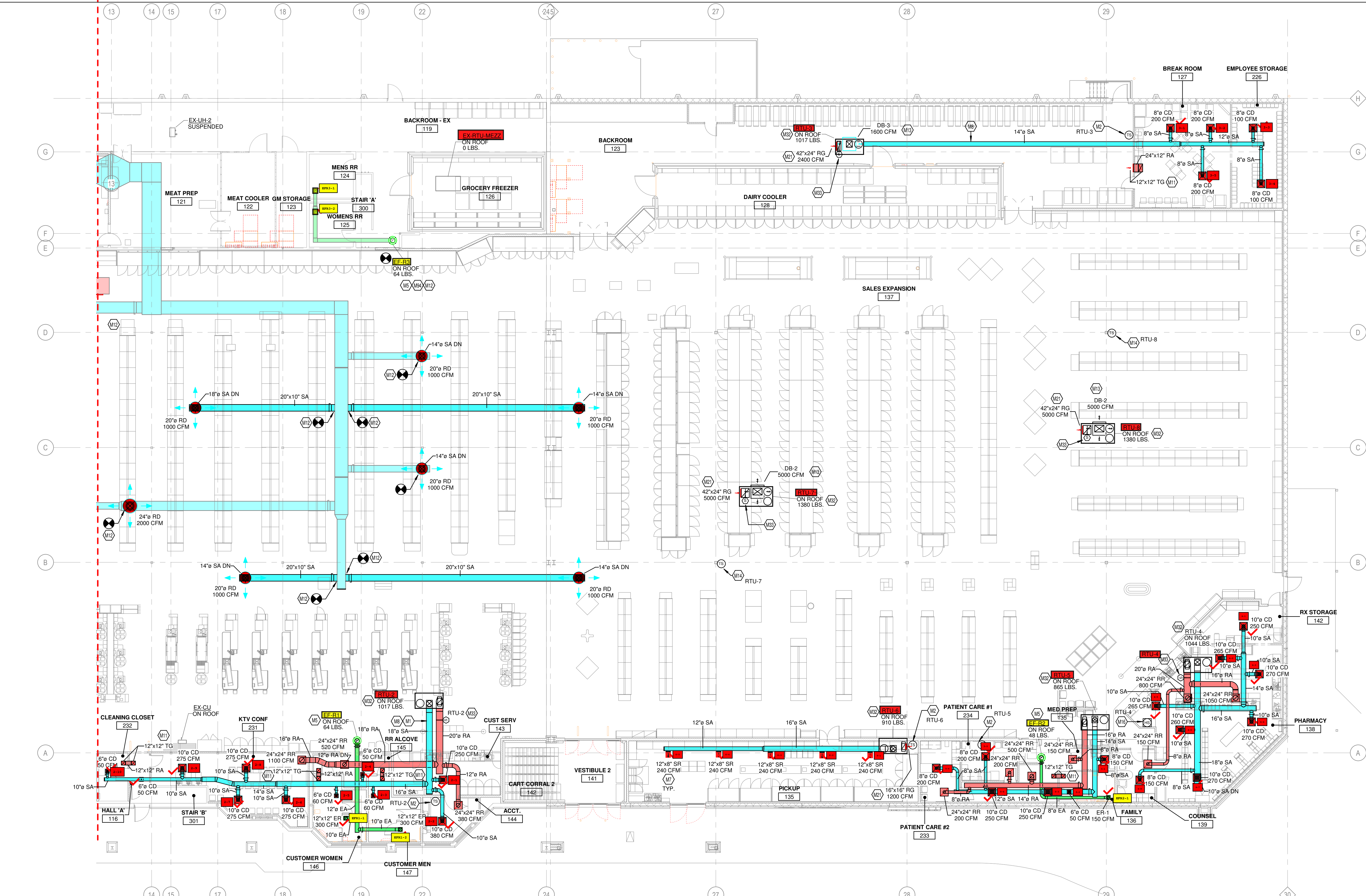


1 HVAC FLOOR PLAN - LEFT
3/32" = 1'-0"



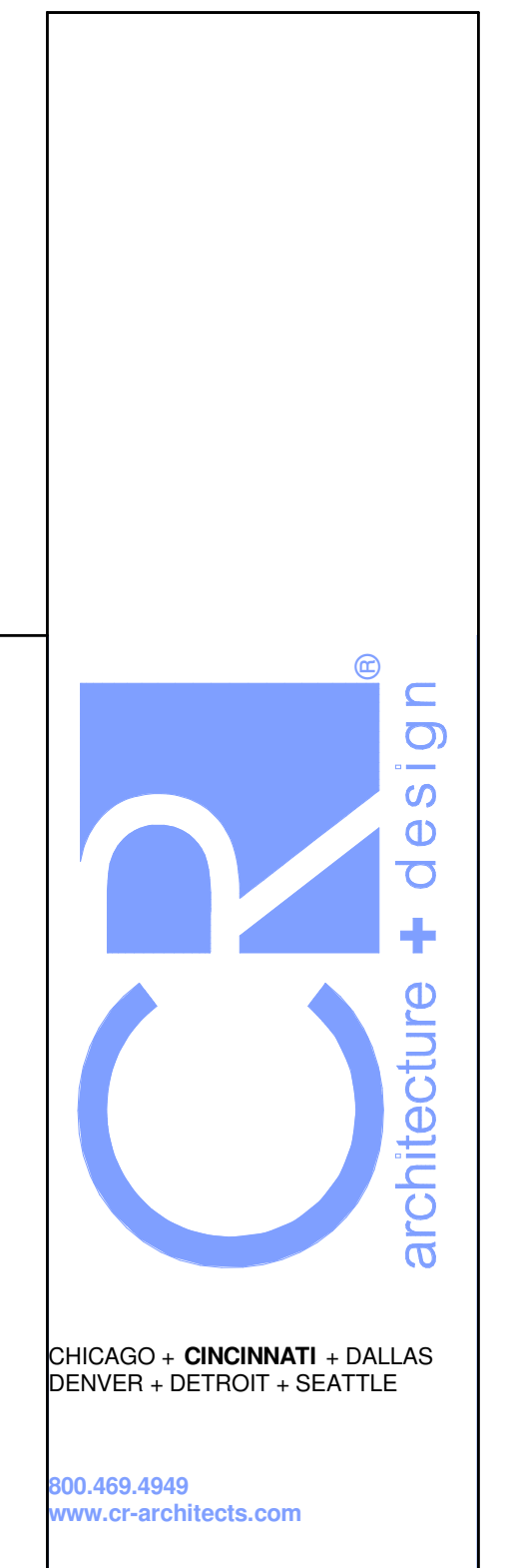
2" REFERENCE LINE

THIS DOCUMENT IS THE PROPERTY OF COLE-RUSSELL ARCHITECTS, INC. NEITHER THE DOCUMENT NOR THE INFORMATION CONTAINED HEREIN MAY BE REPRODUCED OR USED FOR OTHER THAN THE SPECIFIC PROJECT FOR WHICH IT WAS PREPARED WITHOUT THE EXPRESS WRITTEN CONSENT OF COLE-RUSSELL ARCHITECTS, INC.
10/25/2023 2:11:57 PM



KEYED NOTES

- M1 CONTRACTOR TO REFER TO HSD-3 ON M5.1 FOR DUCTWORK INSTALLATION INFORMATION.
- M2 TEMPERATURE SENSOR FOR RTU FURNISHED BY ORIGINAL EQUIPMENT MANUFACTURER. ROUTE CONTROL WIRING THROUGH RTU AND BACK TO BUILDING CONTROL PANEL. MOUNT SENSOR 9" AFF ON WALL. COORDINATE LOCATION WITH KROGER EQUIPMENT AND FURNISHINGS. PROVIDE LOCKABLE PROTECTIVE COVER OVER DEVICE.
- M5 DUCT UP TO OPENING THROUGH ROOF CAPPED WITH CURB AND KROGER FURNISHED EXHAUST FAN.
- M7 SIDEWALL DIFFUSERS TO BE INSTALLED AT 45 DEGREES DOWNWARD. REFER TO 233713.00-02 ON M5.2 FOR INSTALLATION INFORMATION.
- M8 DUCTWORK TO BE HELD TIGHT TO STRUCTURE.
- M11 INSTALL TRANSFER GRILLES IN ACCORDANCE WITH 233713.00-19 ON M5.2.
- M12 CONNECT TO EXISTING DUCT. CONTRACTOR TO VERIFY EXISTING SIZE AND LOCATION IN FIELD PRIOR TO NEW WORK. REBALANCE EXISTING SYSTEM AS NECESSARY TO ACHIEVE SPECIFIED AIRFLOWS.
- M13 DROP BOX DIFFUSER SYSTEM. REFER TO DIFFUSER SCHEDULE FOR AES MODEL, NUMBERS AND QUANTITIES. REFER TO FLOOR PLANS FOR THROW DIRECTIONS AND AIRFLOW. REFER TO DETAIL HSD-1 FOR INSTALLATION.
- M14 TEMPERATURE SENSOR FOR RTU FURNISHED BY ORIGINAL EQUIPMENT MANUFACTURER. ROUTE CONTROL WIRING THROUGH RTU AND BACK TO BUILDING CONTROL PANEL. MOUNT SENSOR 9" AFF ON WALL. COORDINATE LOCATION WITH KROGER EQUIPMENT AND FURNISHINGS. PROVIDE LOCKABLE PROTECTIVE COVER OVER DEVICE.
- M16 COMBINATION TEMPERATURE/RELATIVE HUMIDITY SENSOR FOR RTU FURNISHED BY ORIGINAL EQUIPMENT MANUFACTURER. ROUTE CONTROL WIRING THROUGH RTU AND BACK TO BUILDING CONTROL PANEL. INSTALL PROBE AT 5' AFF ON WALL. REFER TO DETAIL HSD-1 FOR DRAWINGS FOR FURTHER INFORMATION.
- M21 RETURN AIR GRILLE IN SIDE OF DUCT DROP, TITUS 50P WITH 1 INCH OPENINGS OR APPROVED EQUAL.
- M32 ROOFTOP UNIT FURNISHED BY KROGER AND INSTALLED BY MECHANICAL CONTRACTOR. BALANCE TO SCHEDULED AIRFLOW. REFER TO ARCHITECTURAL ROOF PLAN FOR HVAC ROOFTOP DIMENSIONAL INFORMATION. REFER TO STRUCTURAL DRAWINGS FOR JOIST AND BEAM LOCATIONS AND DIMENSIONAL INFORMATION.
- M33 DUCT MOUNTED SMOKE DETECTOR TO BE INSTALLED IN THE RETURN DUCTWORK, DOWNSTREAM OF FILTERS AND UPSTREAM OF ANY BRANCH CONNECTIONS. INSTALL SAMPLING TUBES AND DETECTOR HOUSING IN STRICT ACCORDANCE WITH MANUFACTURER'S INSTALLATION INSTRUCTIONS. DETECTOR, FAN SHUTDOWN WIRING, AND CONTROLS BY OTHERS.
- M38 ROOFTOP UNIT FURNISHED BY KROGER AND INSTALLED BY MECHANICAL CONTRACTOR ON NEW CURB ADAPTER. LOCATION SHOWN IS APPROXIMATE. FIELD VERIFY PRIOR TO INSTALL. REFER TO STRUCTURAL DRAWINGS FOR JOIST AND BEAM LOCATIONS AND DIMENSIONAL INFORMATION. BALANCE TO SCHEDULED AIRFLOW.
- M39 DUCT DROP SIZES SHOWN REFLECT THE SIZES AT CONNECTION TO UNIT. AFTER DISCUSSION AND APPROVAL FROM ENGINEER OF RECORD, VARYING SIZES MAY BE INSTALLED AS REQUESTED BY CONTRACTOR OR OWNER.
- M40 COORDINATE CONSTRUCTION OF WALLED BOX OUT TO HIDE DUCTWORK WITH ARCHITECTURAL SHEETS. THIS SPACE IS TO BE TREATED AS AN AIR PLenum.
- M54 RETURN AIR GRILLE IN SIDE OF DUCT DROP, TITUS 50P WITH 1 INCH OPENINGS OR APPROVED EQUAL. RECONNECT TO EXISTING DUCTWORK.

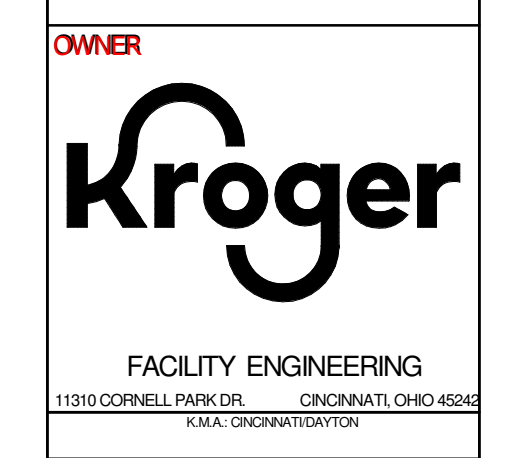


CHICAGO • CINCINNATI • DALLAS
DENVER • DETROIT • SEATTLE
900.469.4949
www.a-c architects.com

CONSULTANTS

MECHANICAL/ELECTRICAL ENGINEERS
WWW.ALHENGINEERS.COM
LEWINGTON, KENTUCKY
COLUMBUS, OHIO
NEW YORK, NEW YORK

SEKLH ENGINEERS
KOHRS/LOHMANN/PIEL ENGINEERS, INC.
1559 ALEXANDRIA PIKE, SUITE 11
BOWLING GREEN, OHIO 43402
609.354.9795 FAX 609.354.9004
889.445.8058 FAX



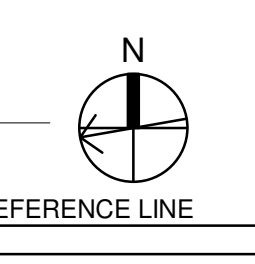
FACILITY ENGINEERING
11310 CORNELL PARK DR. CLEVELAND, OHIO 44134
www.kroger.com

DATE	DESCRIPTION
12/14/2022	90% KROGER REVIEW
01/27/2023	BID/PERMIT ISSUE

#	DATE	DESCRIPTION
3	10/25/2023	BULLETIN NO. 3
9	02/19/2025	BULLETIN NO. 10

EXECUTED BY: TDS
REVIEWED BY: KSL
PROJECT TITLE
KROGER STORE A921
1099 S.R. 28 BY-PASS
MILFORD, OH 45150
COMMISSION NO. 522342
ISSUE DATE 01/27/2023
SHEET TITLE
HVAC FLOOR PLAN - RIGHT
SHEET NO.
M1.1b

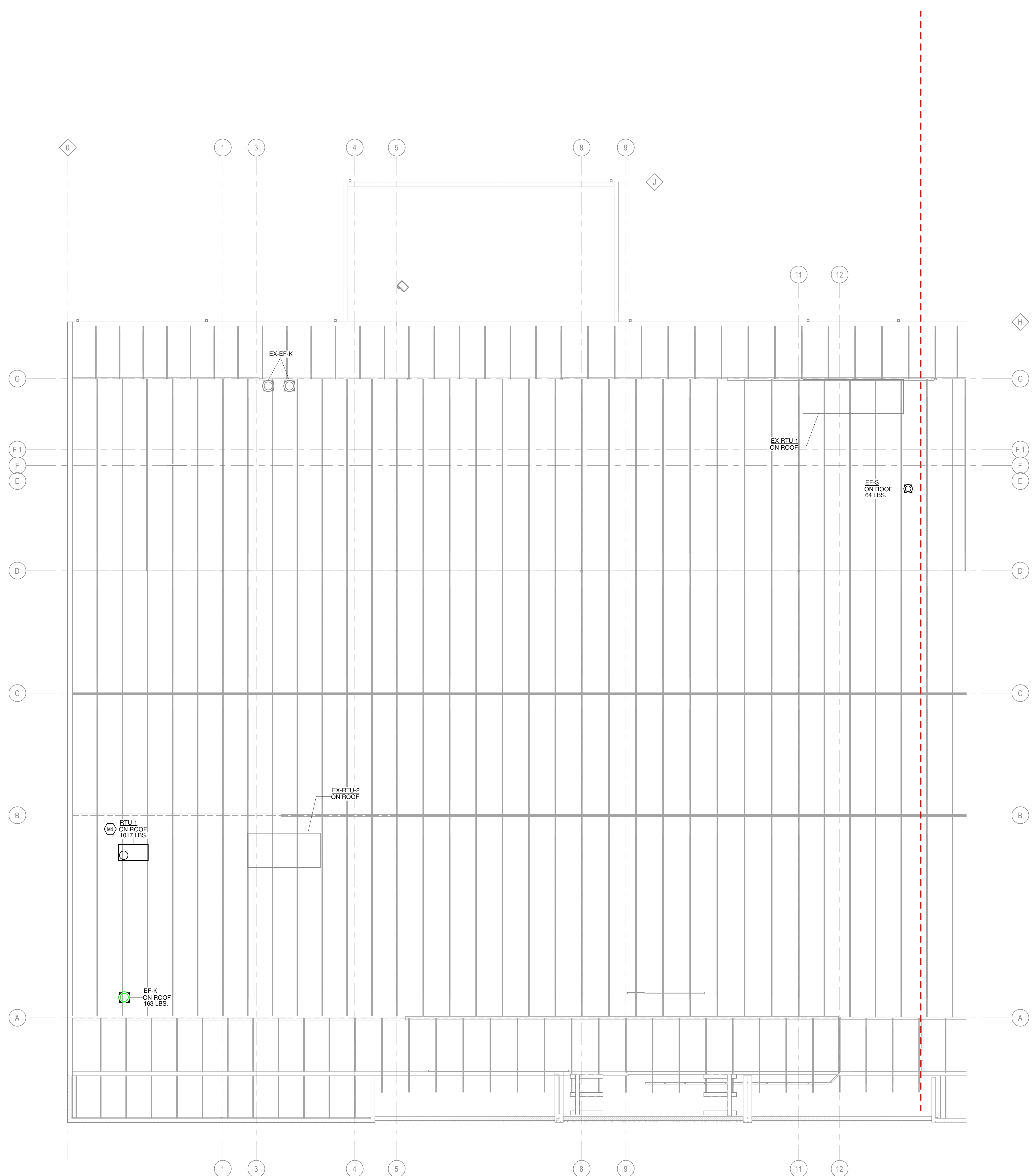
THIS DOCUMENT IS THE PROPERTY OF COLLETT RUSSELL ARCHITECTS, INC. NEITHER THE DOCUMENT NOR THE INFORMATION CONTAINED HEREIN MAY BE COPIED OR USED FOR OTHER THAN THE SPECIFIC PROJECT FOR WHICH IT WAS PREPARED WITHOUT THE EXPRESS WRITTEN CONSENT OF COLLETT RUSSELL ARCHITECTS, INC.
2/20/2025 10:38:51 AM



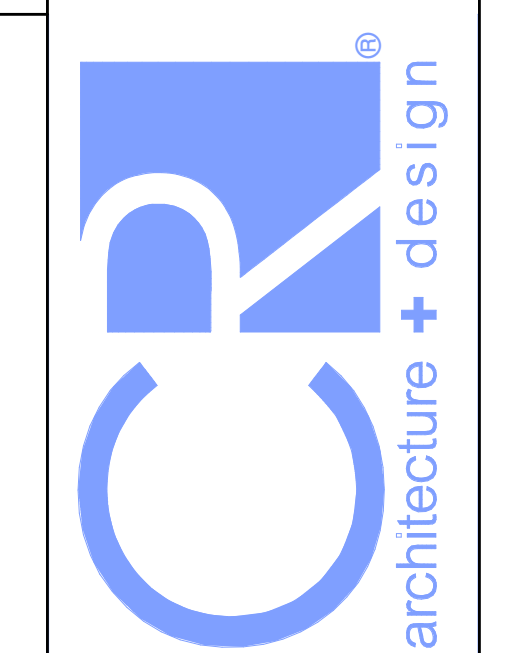
② HVAC FLOOR PLAN - OFFICE MEZZANINE
1/4" = 1'-0"

KEYED NOTES

M4 REFER TO ARCHITECTURAL ROOF PLAN FOR HVAC ROOFTOP DIMENSIONAL INFORMATION. REFER TO STRUCTURAL DRAWINGS FOR JOIST AND BEAM LOCATIONS AND DIMENSIONAL INFORMATION.



1 HVAC ROOF PLAN - LEFT
3/32" = 1'-0"



CHICAGO • CINCINNATI • DALLAS
DENVER • DETROIT • SEATTLE
800.469.4949
www.cr-architects.com

CONSULTANTS
MECHANICAL/ELECTRICAL ENGINEERS
WWW.ALHEIMERS.COM
LEWINGTON, KENTUCKY
COLUMBUS, OHIO
NEW YORK, NEW YORK
SEKLN ENGINEERS
KOHRS/LOHMEYER/HILL ENGINEERS, INC.
1558 ALEXANDRIA PIKE, SUITE 11
BOWLING GREEN, OHIO 43402
601.354.3795 FAX 601.354.3700
889.442.8058 FAX



OWNER
FACILITY ENGINEERING
11210 CORNELL PARK DR. CINCINNATI, OH 45242
KROGER.COM

ISSUE	DATE	DESCRIPTION
	12/14/2022	90% KROGER REVIEW
	01/27/2023	BD/PERMIT ISSUE

REVISION	#	DATE	DESCRIPTION

EXECUTED BY: TDS
REVIEWED BY: KSL
PROJECT TITLE

**KROGER STORE
A921**

1099 S.R. 28 BY-PASS
MILFORD, OH 45150

COMMISSION NO. 522342
ISSUE DATE 01/27/2023

SHEET TITLE
HVAC ROOF PLAN - LEFT

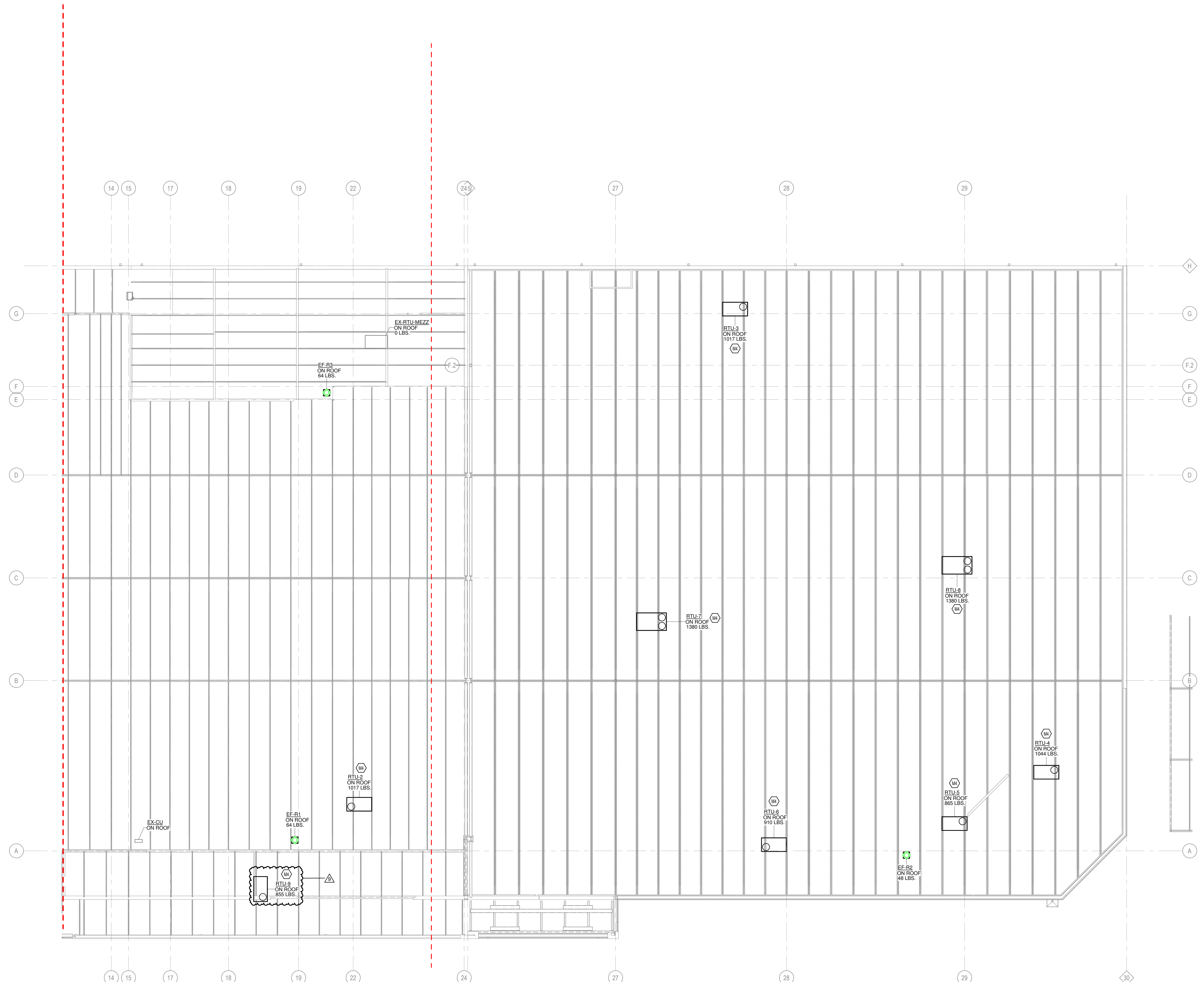
SHEET NO.
M1.2a

© 2022 Cole+Russell Architects, Inc.

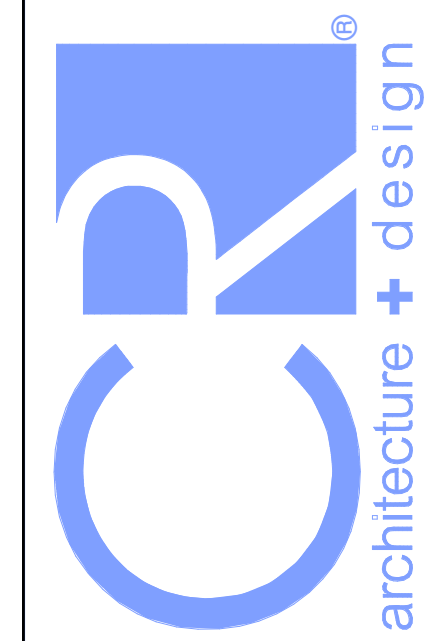
THIS DOCUMENT IS THE PROPERTY OF COLE+RUSSELL ARCHITECTS, INC. NEITHER THE DOCUMENT NOR THE INFORMATION CONTAINED HEREIN MAY BE COPIED OR USED FOR OTHER THAN THE SPECIFIC PROJECT FOR WHICH IT WAS PREPARED WITHOUT THE EXPRESS WRITTEN CONSENT OF COLE+RUSSELL ARCHITECTS, INC.
1/27/2023 1:54:38 PM

KEYED NOTES

M4 REFER TO ARCHITECTURAL ROOF PLAN FOR HVAC ROOFTOP DIMENSIONAL INFORMATION. REFER TO STRUCTURAL DRAWINGS FOR JOIST AND BEAM LOCATIONS AND DIMENSIONAL INFORMATION.



1 HVAC ROOF PLAN - RIGHT
3/32" = 1'-0"



CHICAGO • CINCINNATI • DALLAS
DENVER • DETROIT • SEATTLE

800.469.4949
www.cd-architects.com

CONSULTANTS

MECHANICAL/ELECTRICAL
ENGINEERS
WWW.ALHEMERS.COM
LEWINGTON, KENTUCKY
COLUMBUS, OHIO
NEW YORK, NEW YORK

SEKLN ENGINEERS
KOHRS/LOHMANN HELL ENGINEERS, INC.
1558 ALEXANDRIA PIKE, SUITE 11
LEWINGTON, KY 40301
800.254.9788 FAX 606.462.9700
859.442.8098 FAX

OWNER



FACILITY ENGINEERING
11210 CORNELL PARK DR. CINCINNATI, OH 45242
KSA 1202020707070

ISSUE	DATE	DESCRIPTION
	12/14/2022	90% KROGER REVIEW
	01/27/2023	BIDPERMIT ISSUE

REVISION	#	DATE	DESCRIPTION
	9	02/19/2025	BULLETIN NO.10

EXECUTED BY: TDS

REVIEWED BY: KSL

PROJECT TITLE
**KROGER STORE
A921**

1099 S.R. 28 BY-PASS
MILFORD, OH 45150

COMMISSION NO. 522342

ISSUE DATE 01/27/2023

SHEET TITLE
**HVAC ROOF PLAN -
RIGHT**

SHEET NO.

M1.2b

© 2022 Cole-Russell Architects, Inc.

THIS DOCUMENT IS THE PROPERTY OF COLE-RUSSELL ARCHITECTS, INC. NEITHER THE DOCUMENT NOR THE INFORMATION IT CONTAINS MAY BE COPIED OR USED FOR OTHER THAN THE SPECIFIC PROJECT FOR WHICH IT WAS PREPARED WITHOUT THE EXPRESS WRITTEN CONSENT OF COLE-RUSSELL ARCHITECTS, INC.
2/19/2025 4:27:51 PM

